

PRODUCT INFORMATION PACKET



Model No: LM30092

Catalog No: LM30092

Elevator Duty Motor, 10 & 15 HP, 3 Ph, 60 & 60 Hz, 230/460 & 230/460 V, 3600 & 3600 RPM,
213T Frame, DP



Regal and Leeson are trademarks of Regal Rexnord Corporation or one of its affiliated companies.

©2023 Regal Rexnord Corporation, All Rights Reserved. MC017097E





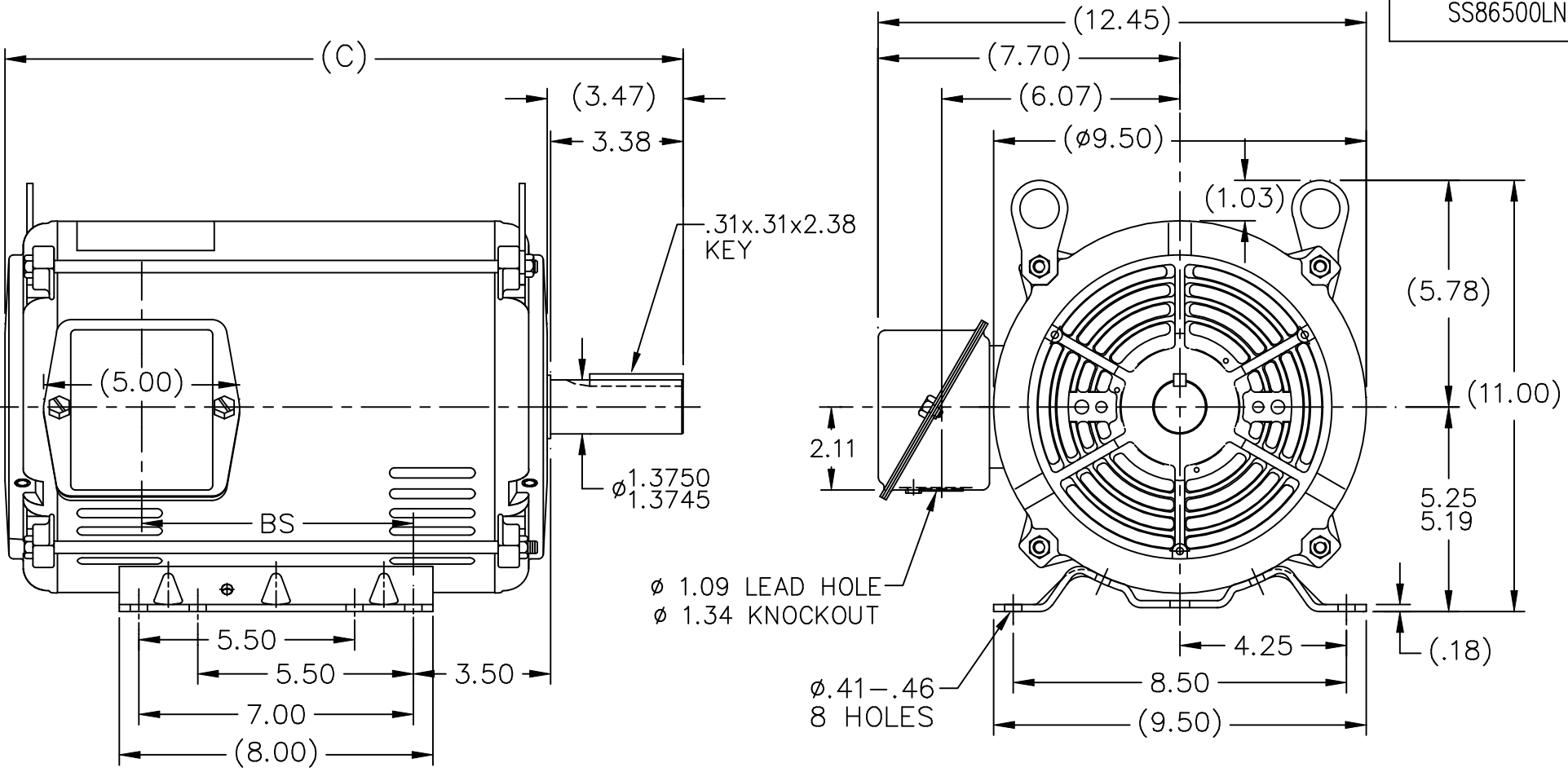
Nameplate Specifications

Phase	3	Output HP	10 & 15 Hp
Output KW	7.5 & 11.2 kW	Voltage	230/460 & 230/460 V
Speed	3515 & 3470 rpm	Service Factor	1.0 & 1.0
Frame	213T	Enclosure	Drip Proof
Thermal Protection	No Protection	Efficiency	88.5 & 85.5 %
Ambient Temperature	40 °C	Frequency	60 & 60 Hz
Current	23.4/11.7 & 35.5/17.8 A	Power Factor	90
Duty	120/80 Starts/Hour	Insulation Class	F
Design Code	INV	KVA Code	H
Drive End Bearing Size	307	Opp Drive End Bearing Size	206
UL	Recognized	CSA	Y
CE	Y	IP Code	22
Number of Speeds	1		

Technical Specifications

Electrical Type	Squirrel Cage Induction Run	Starting Method	Wye Start Delta Run
Poles	2	Rotation	Reversible
Resistance Main	1.1 Ohms	Mounting	Rigid Base
Motor Orientation	Horizontal	Drive End Bearing	Ball
Opp Drive End Bearing	Ball	Frame Material	Rolled Steel
Shaft Type	T	Overall Length	17.29 in
Frame Length	11.23 in	Shaft Diameter	1.375 in
Shaft Extension	3.38 in	Assembly/Box Mounting	F1/F2 CAPABLE
Outline Drawing	SS86500LN-1115	Connection Drawing	EE7358-LN

SS86500LN



- NOTES:
1. NAMEPLATE TO BE READ FROM C'BOX SIDE OF MOTOR.
 2. BOX CAN BE MOUNTED IN 90° STEPS.
 3. BOX WILL BE AT OPPOSITE SIDES IN F2 MOUNTING.
 4. BOX CAN BE MOUNTED ON OPPOSITE SIDE BY REMOVING BRACKETS AND TURNING FRAME 180°. (EXCEPT AS NOTED.)

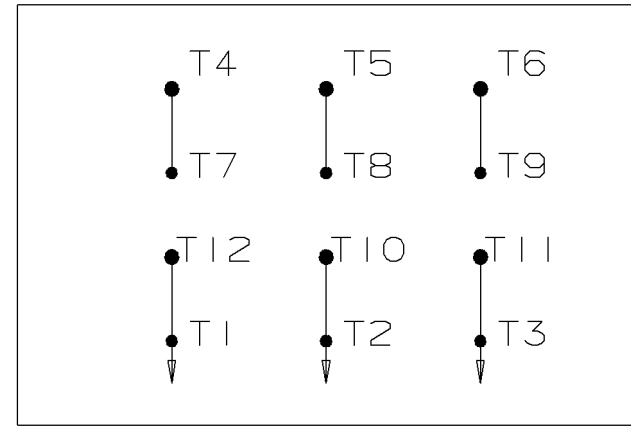
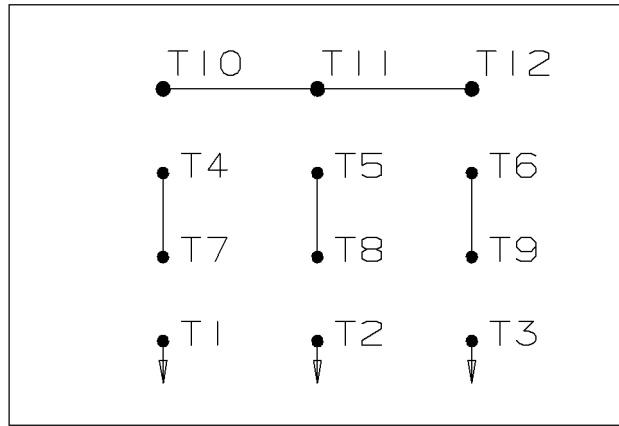
DASH	FR.	C	BS	MOUNTING
965	213T	15.79	5.43	
1115	213/15T	17.29	6.93	
1240	213/15T	18.54	8.18	F1 ONLY

				TOLERANCES UNLESS SPECIFIED			DRAWN TRB 07-14-1999		
NO.	REVISION	BY & DATE	CHK	ANG	FINISH		SCALE	1=4	
5	REISSUE - REVISED BORDER TO LINCOLN LOGO	MSG 11-04-2004	ML	DEC.	INCHES	TITLE OUTLINE 210T FRAME -BB -TS -DR.PR. MAT'L. FINISH	CHK	ML 07-20-1999	
4	REMOVED DASH 965 FROM SERIES CN38252	RWR 07-20-2004	ML	.X	±.1		APPD	GK 07-20-1999	
3	UPDATED 'C' DIMS PER ACTUAL PARTS CN29200-320	CAV 04-11-2000	ML	.XX	±.03		SCALE	1=4	
2	UPDATED 'C'BOX GEOMETRY CN28425	DRS 01-25-2000	ML	.XXX	±.005		REF		
1	NEW DRAWING	TRB 07-20-1999	ML	.XXXX	±.0005		FMF		
THIS DRAWING IN DESIGN AND DETAIL IS OUR PROPERTY AND MUST NOT BE USED EXCEPT IN CONNECTION WITH OUR WORK ALL RIGHTS OF DESIGN AND INVENTION ARE RESERVED THIS IS AN ELECTRONICALLY GENERATED DOCUMENT - DO NOT SCALE THIS PRINT		RFP	CAD FILE		ss86500ln	SIZE	DRAWING NO.	PAGE 1 OF 1	REV.
		DIST	LB			A	SS86500LN		5

WYE START

HIGH VOLTAGE

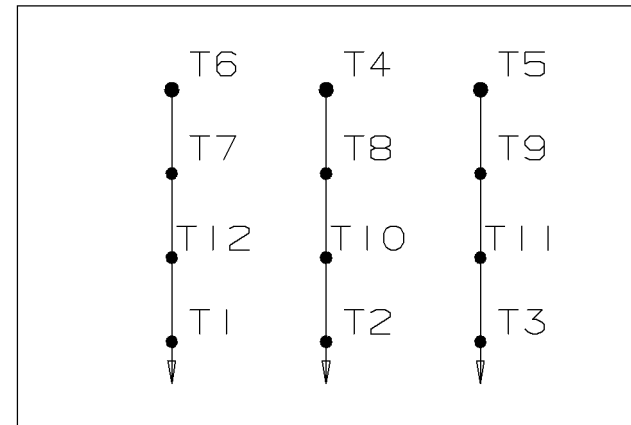
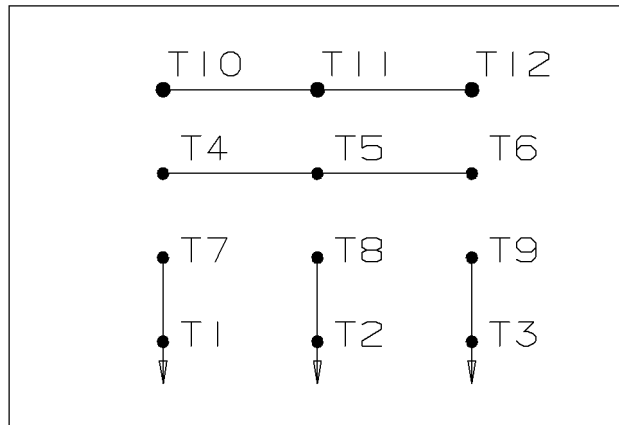
DELTA RUN



WYE START

LOW VOLTAGE

DELTA RUN



4/2 CKTY Δ

					<input checked="" type="checkbox"/> UNLESS OTHERWISE SPECIFIED DIMENSIONS ARE IN INCHES TOL. ON XX± .02 XXX± .005 XXXX± .0005 ANGLES± 7'30"		
						MAX. SURFACE ROUGHNESS UNLESS OTHERWISE NOTED FINISH MATERIAL	DRAWN BY DRS CHKD BY ML APPD BY TB
1	12-07-1999	NEW DRAWING	DRS	PART NAME CONNECTION DIAGRAM			DRWG NO A-EE7358-LN
REV	DATE	CHANGE	NAME	PURCHASED			CADD FILE NO. EE7358-LN



1051 CHEYENNE AVE.
GRAFTON, WI 53024
PH. 262-277-8810

DATA VOLTS: 460

CERTIFICATION DATA SHEET

CONN. DIAGRAM: A-EE7358-LN
OUTLINE: A-SS86500LN-1115
WINDING: K213282

CAT #: LM30092

R6 7

TYPICAL MOTOR PERFORMANCE DATA

HP	KW	SYNC RPM	FL RPM	FRAME	ENCLOSURE	TYPE	KVA CODE	DESIGN
10	7.5	3600	3515	213T	DP	TDW	H	B

PH	HZ	VOLTS	AMPS	START TYPE	DUTY	INSL	S.F.	AMB	ELEV.
3	60/60	230/460#230/460	23.4/11.7&35.5/17.8	VYE START DELTA RUN	60 MIN	F	1.15	40	3300

F.L. EFF	88.5	3/4 LD EFF	89.5	1/2 LD EFF	88.5	GTD EFF	ELECT. TYPE
F.L. PF	90.0	3/4 LD PF	87.5	1/2 LD PF	81.0	86.5	SQ CAGE IND RUN

F.L. TORQUE	LR AMPS @ 460 V	L.R. TORQUE	B.D. TORQUE	F.L. RISE (° C)
15.0 LB-FT	81.0	25.0 LB-FT 167%	46.5 LB-FT 310%	25

PRESSURE @ 3	SOUND	POWER	ROTOR WK²	MAX. LOAD WK²	SAFE STALL TIME	STARTS/HOUR	MOTOR WGT
75 dBA	84 dBA		0.45 LB-FT²	0 LB-FT²	15 SEC.	0	105 LB.

***** SUPPLEMENTAL INFORMATION *****

DE BRACKET TYPE	ODE BRACKET TYPE	MOUNT TYPE	MOTOR ORIENTATION	SEVERE DUTY	HAZARDOUS LOCATION	DRIP COVER	SCREENS	PAINT
STANDARD	STANDARD	RIGID	HORIZONTAL	NO	NONE	NO	NONE	WATTSAVER

BEARINGS		GREASE	SHAFT TYPE	SPECIAL DE	SPECIAL ODE	SHAFT MATERIAL	FRAME MATERIAL
DE	ODE	POLYREX EM	T	NONE	NONE	1144 STRESSPROOF (C-223)	ROLLED STEEL
BALL	BALL						
307	206						

THERMOSTATS	PROTECTORS	WDG RTD's	BRG RTD's	THERMISTORS	CONTROL	SPACE HEATERS
NONE	NOT	NONE	NONE	NONE	FALSE	NA

R1 (ohms/ph)	R2 (ohms/ph)	X1 (ohms/ph)	X2 (ohms/ph)	Xm (ohms/ph)	VIBRATION (in/sec)	FLOAT
0.568	0.568	1.988	1.136	60.776	0.150	ODE

* N O T E S *	INVERTER TORQUE: NONE INV. HP SPEED RANGE: NONE					
	ENCODER: NONE NONE NONE					
	BRAKE: NONE NONE NONE					
	FT-LB: NA VOLTAGE: NONE					
	HZ: NONE PPR					

DATE:	8/21/2018	UL: V-INS, CONST UL REC
-------	-----------	-------------------------

Data Sheet

Date: 8/21/2018

LM30092



Data @ **460 V**

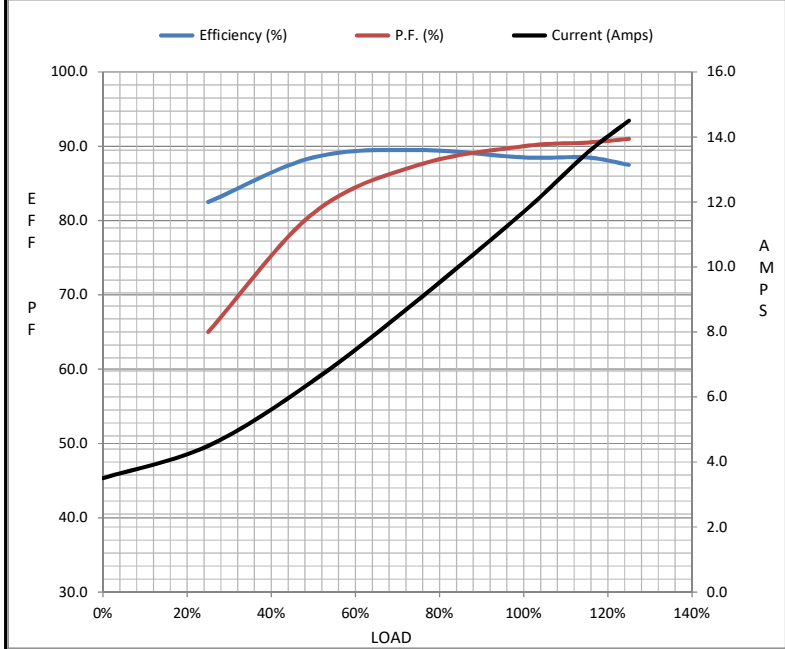
Motor Load Data

Load	0%	25%	50%	75%	100%	115%	125%	LR
Current (Amps)	3.5	4.5	6.5	9.0	11.7	13.5	14.5	81.0
Torque (ft-lb)	0.00	3.7	7.4	11.1	15.0	17.5	18.8	25.0
RPM	3600	3580	3560	3540	3515	3,505	3490	0
Efficiency (%)		82.5	88.5	89.5	88.5	88.5	87.5	
P.F. (%)	13.0	65.0	81.0	87.5	90.0	90.5	91.0	43.0

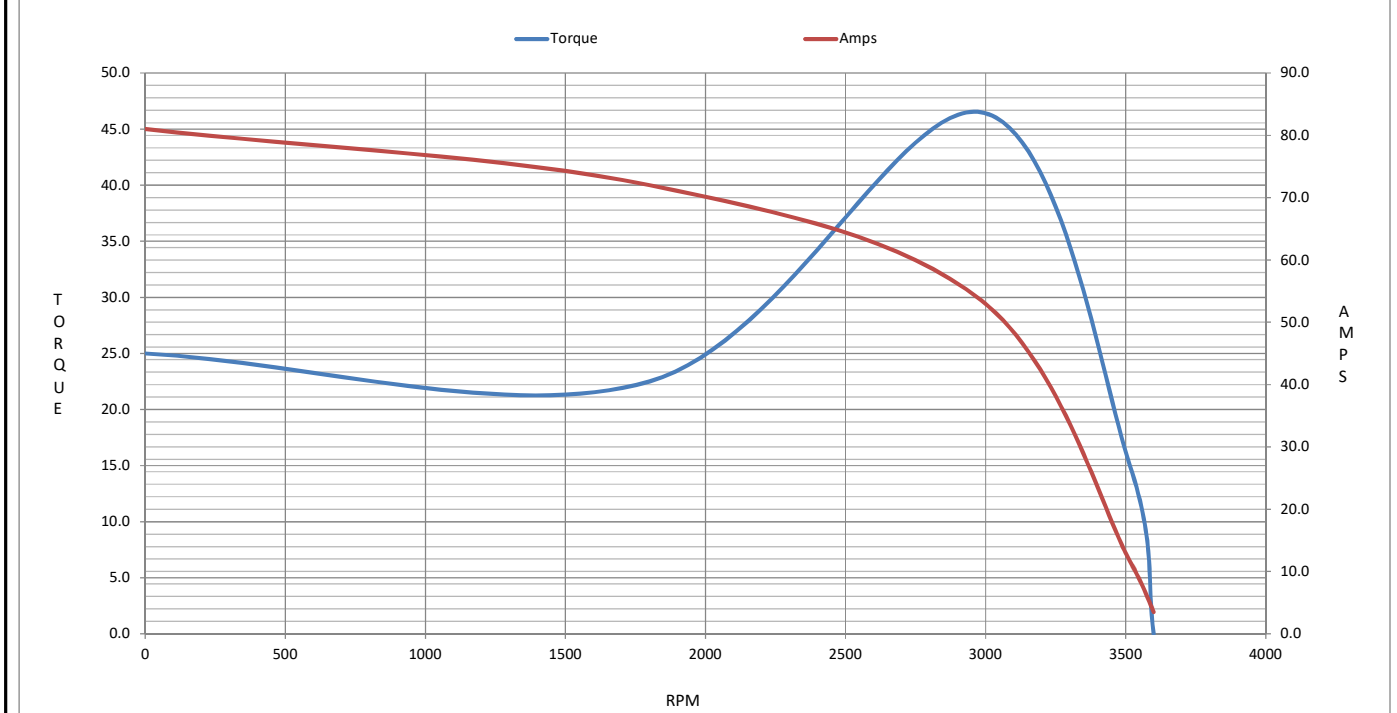
Motor Speed Data

	LR	Pull-Up	BD	Rated	Idle
Speed (RPM)	0	1800	2985	3515	3600
Current (Amps)	81.0	72.0	53.5	11.7	3.5
Torque (ft-lb)	25.0	22.5	46.5	15.0	0.00

Information Block				
HP	10.0			
Sync. RPM	3600			
Frame	213			
Enclosure	DP			
Construction	TDW			
Voltage	230/460#230/460 V			
Frequency	60 Hz			
Design	A			
LR Code letter	H			
Service Factor	1.15			
Temp Rise @ FL	25 ° C			
Duty	60 MIN			
Ambient	40 ° C			
Elevation	1,000 feet			
Rotor/Shaft wk ²	0.45 Lb-Ft ²			
Ref Wdg	K213282 R6			
Sound Pressure @ 1M	75 dBA			
VFD Rating	NONE			
Outline Dwg	A-SS86500LN-1115			
Conn. Diag	A-EE7358-LN			
Additional Specifications:				
0				
0				
EQUIV CKT (OHMS / PHASE)				
R1	R2	X1	X2	Xm
0.5680	0.5680	1.9880	1.1360	60.7760



Speed - Torque Curve



EC Declaration of Conformity

The undersigned representing
the manufacturer:

Regal Beloit America
100 East Randolph St.
Wausau, WI 54401

and the authorized representative
established within the Community:

Marathon Electric UK
6F Thistleton Road Ind. Estate
Market Overton
Oakham, Rutland LE15 7PP UK

are committed to providing customers with products that comply with applicable regulations and international protocols to which they are subject, including the requirements of the European Parliament Directive on the Harmonization of the laws relating to electrical equipment designed for use within certain voltage limits (2014/35/EU).

Regal Beloit America declares that the following product(s), to which this declaration relates, are in conformity with the relevant sections of the EC standards listed below.

This statement supersedes any statements previously issued pertaining to the product(s) listed below and is subject to change without notice.

Model No : LM30092

(Model No. may contain prefix and/or suffix characters)

Catalog No : LM30092

Rework No : N/A

Directives :

Low Voltage Directive 2014/35/EU

Harmonized Standards Used :

EN 60034-1: 2010 (IEC 60034-1: 2010)

EN 60034-5: 2001/A1:2007 (IEC 60034-5: 2000/A1:2006)

Authorized Representative:



Michael A. Logsdon
Vice President, Technology

Authorized Representative in the Community:



Julian Clark
Marketing Engineer

Created on 09/01/2022

CE 22