

PRODUCT INFORMATION PACKET



Model No: LM29849
Catalog No: LM29849
50/12.5,1800/900,TEFC,326T,3/60/460

Regal and Leeson are trademarks of Regal Rexnord Corporation or one of its affiliated companies.
©2023 Regal Rexnord Corporation, All Rights Reserved. MC017097E





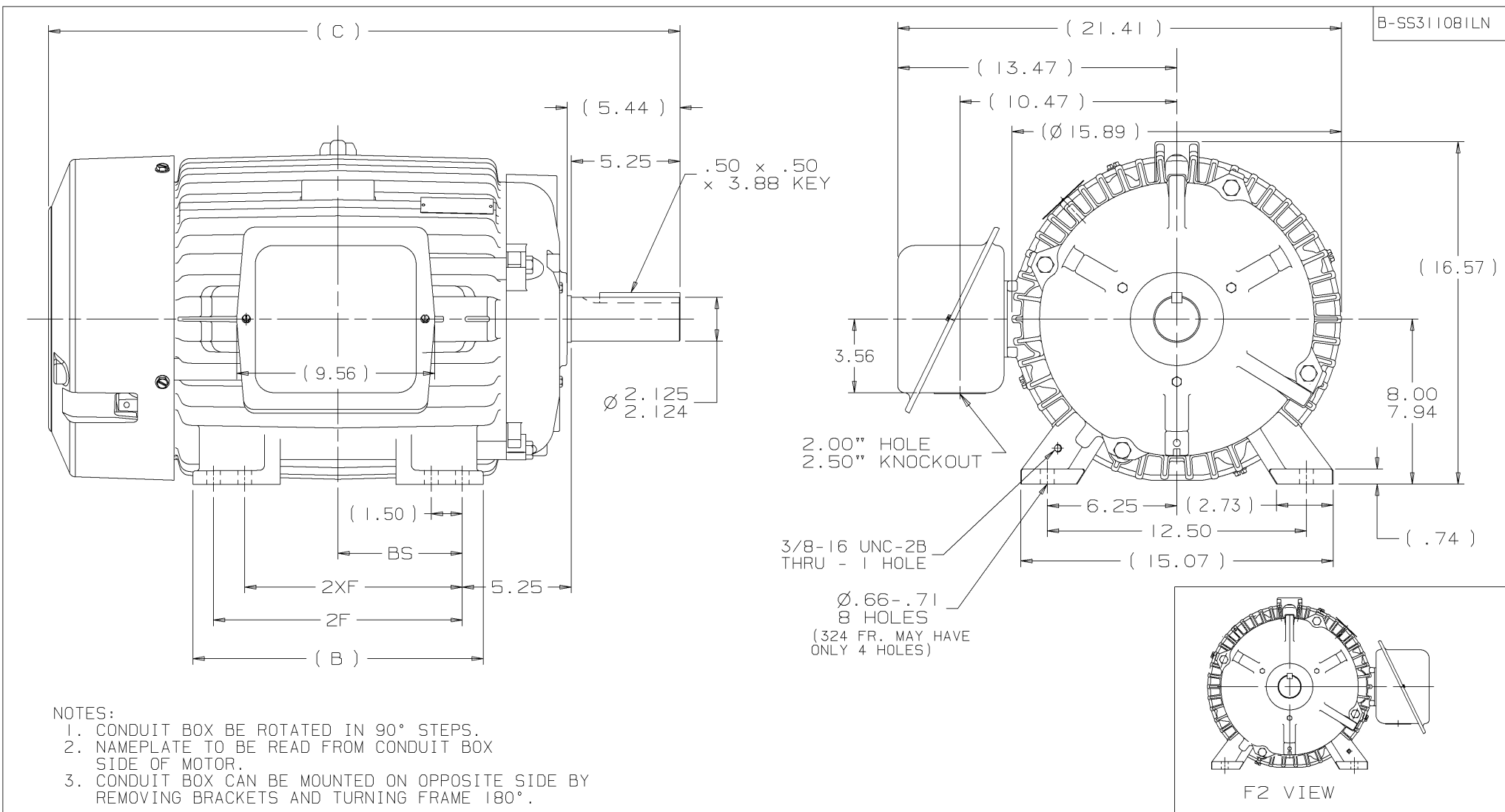
Nameplate Specifications


Phase	3	Output HP	50 & 12.50 Hp
Output KW	37.3 & 9.3 kW	Voltage	460 & 460 V
Speed	1775 & 875 rpm	Service Factor	1.15 & 1.15
Frame	326T	Enclosure	Totally Enclosed Fan Cooled
Thermal Protection	No Protection	Efficiency	90.2 & 86.5 %
Ambient Temperature	40 °C	Frequency	60 & 60 Hz
Current	61 & 21 A	Power Factor	83
Duty	Continuous	Insulation Class	F
Design Code	1VT	KVA Code	J
Drive End Bearing Size	312	Opp Drive End Bearing Size	311
UL	No	CSA	Y
CE	Y	IP Code	43
Number of Speeds	2		

Technical Specifications

Electrical Type	Squirrel Cage Induction Run	Starting Method	Across The Line
Poles	4/8	Rotation	Reversible
Resistance Main	.18 Ohms	Mounting	Rigid Base
Motor Orientation	Horizontal	Drive End Bearing	Ball
Opp Drive End Bearing	Ball	Frame Material	Cast Iron
Shaft Type	T	Assembly/Box Mounting	F1/F2 CAPABLE
Outline Drawing	B-SS311081LN-1625	Connection Drawing	A-EE7322-LN

This is an uncontrolled document once printed or downloaded and is subject to change without notice. Date Created:06/22/2023

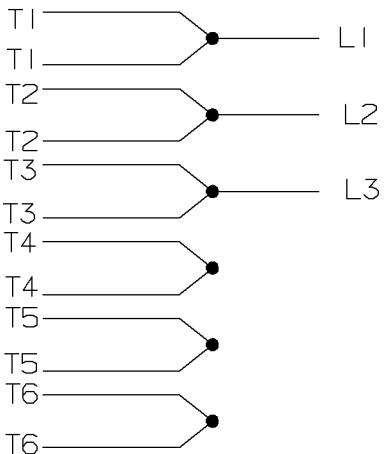


													<div>TOLERANCES UNLESS SPECIFIED</div> <div>DEC. TOLERANCE</div> <div>.X ±.1</div> <div>.XX ±.03</div> <div>.XXX ±.005</div> <div>.XXXX ±.0005</div>			<div></div> <div>TITLE OUTLINE - TFPA 320 FR. - BB - STD. - 12.50 LAM.</div> <div>✓ SURFACE ROUGHNESS UNLESS SPECIFIED MAT'L.</div> <div>FINISH</div>			DRAWN CTO 02-25-2002		
																CHK DRS 02-25-2002					
																APPD JMM 02-25-2002					
																SCALE					
DASH	FRAME	B	C	2F	2XF	BS	I	NEW DRAWING CN 3496B			CTO	02-25-2002	JMM	.XXXX	REF						
1475	324T	14.00	28.97	10.50		5.25	NO.	REVISION			BY	DATE	CHK	ANG	FNF						
1625	324/6T	14.00	30.47	12.00	10.50	6.00	THIS DRAWING IN DESIGN AND DETAIL IS OUR PROPERTY AND MUST NOT BE USED EXCEPT IN CONNECTION WITH OUR WORK. ALL RIGHTS OF DESIGN AND INVENTION ARE RESERVED. THIS IS AN ELECTRONICALLY GENERATED DOCUMENT - DO NOT SCALE THIS PRINT			PURCHASED			CAD FILE SS311081LN			SHOP BOOK	SIZE B	DRAWING NO. SS311081LN	REV. I		

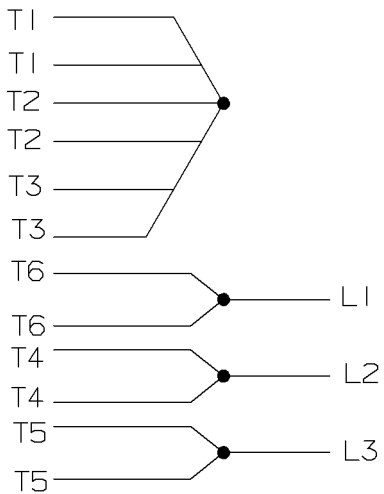
A- EE7322-LN

FOR DUAL LEADS

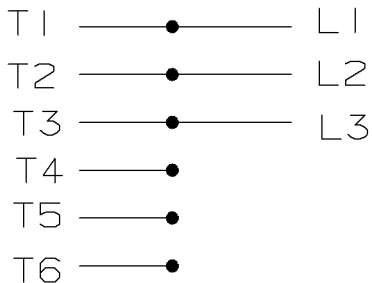
LOW SPEED



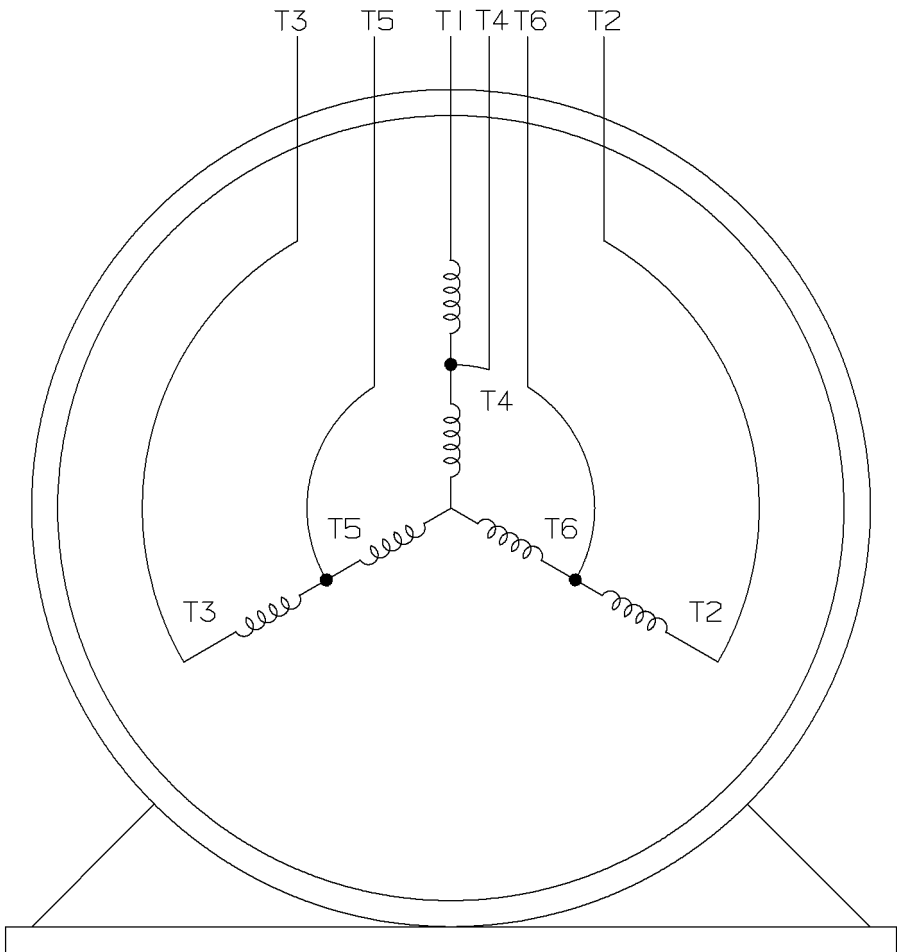
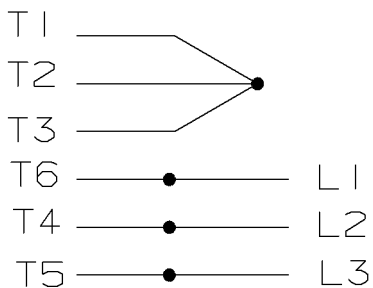
HIGH SPEED



LOW SPEED




HIGH SPEED



VIEW OF TERMINAL END

THREE PHASE MOTOR
SINGLE VOLTAGE
TWO SPEED - SGL. WDG.
VARIABLE TORQUE

					✓ UNLESS OTHERWISE SPECIFIED DIMENSIONS ARE IN INCHES TOL. ON XX± XXX± XXXX± ANGLES±	MAX. SURFACE ROUGHNESS UNLESS OTHERWISE NOTED	DRAWN BY KL 11-03-2000
I	11-03-2000	NEW DRAWING	MU34445	KL	MATERIAL	APPD BY DJK 11-03-2000	
REV	DATE	CHANGE	NAME	PART NAME CONNECTION DIAGRAM - 3Ø SINGLE VOLTAGE - 2 SPEED VARIABLE TORQUE			DRWG NO A-EE7322-LN
				PURCHASED		CADD FILE NO.	EE7322-LN