

# PRODUCT INFORMATION PACKET



Model No: LM29666

Catalog No: LM29666

Elevator Duty Motor, 30 & 25 HP, 3 Ph, 60 & 60 Hz, 230/460 & 230/460 V, 3600 & 3600 RPM,  
160TZ Frame, OPEN



Regal and Leeson are trademarks of Regal Rexnord Corporation or one of its affiliated companies.

©2023 Regal Rexnord Corporation, All Rights Reserved. MC017097E



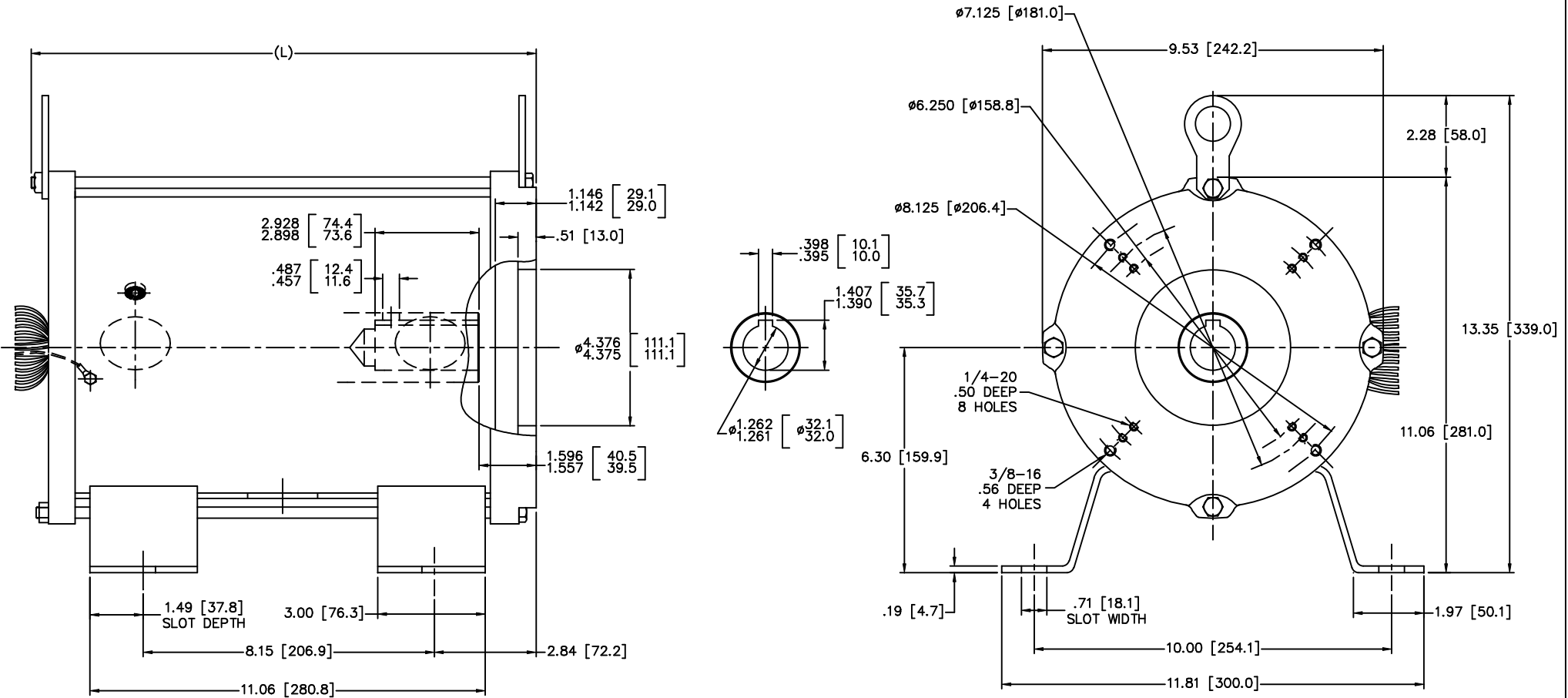


### Nameplate Specifications

Phase	<b>3</b>	Output HP	<b>30 &amp; 25 Hp</b>
Output KW	<b>22.4 &amp; 18.7 kW</b>	Voltage	<b>230/460 &amp; 230/460 V</b>
Speed	<b>3510 &amp; 3525 rpm</b>	Service Factor	<b>1.0</b>
Frame	<b>160TZ</b>	Enclosure	<b>Open Enclosed</b>
Thermal Protection	<b>Thermostat</b>	Efficiency	<b>86.5 &amp; 87.5 %</b>
Ambient Temperature	<b>70 °C</b>	Frequency	<b>60 &amp; 60 Hz</b>
Current	<b>76/38 &amp; 64/32 A</b>	Power Factor	<b>85.7</b>
Duty	<b>120/80 Starts/Hour</b>	Insulation Class	<b>F</b>
Design Code	<b>B</b>	KVA Code	<b>G</b>
Drive End Bearing Size	<b>6307</b>	Opp Drive End Bearing Size	<b>6307</b>
UL	<b>Recognized</b>	CSA	<b>Y</b>
CE	<b>N</b>	IP Code	<b>10</b>
Number of Speeds	<b>1</b>		

### Technical Specifications

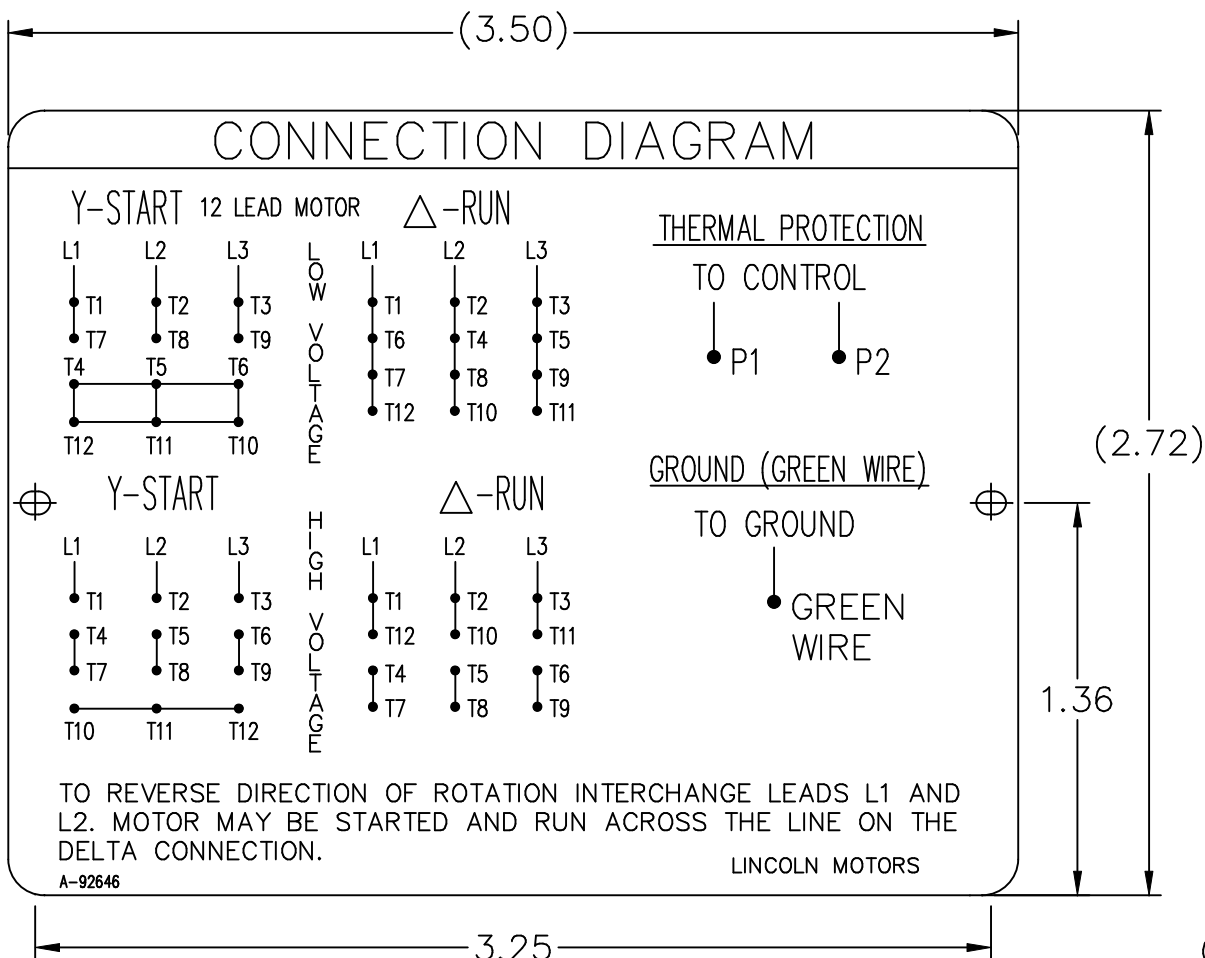
Electrical Type	<b>Squirrel Cage Induction Run</b>	Starting Method	<b>Wye Start Delta Run</b>
Poles	<b>2</b>	Rotation	<b>Reversible</b>
Resistance Main	<b>.57 Ohms</b>	Mounting	<b>Rigid Base</b>
Motor Orientation	<b>Horizontal</b>	Drive End Bearing	<b>Ball</b>
Opp Drive End Bearing	<b>Ball</b>	Frame Material	<b>Rolled Steel</b>
Shaft Type	<b>Single Special Extension</b>	Overall Length	<b>14.53 in</b>
Frame Length	<b>12.00 in</b>	Shaft Diameter	<b>1.250 in</b>
Shaft Extension	<b>2.92 in</b>	Assembly/Box Mounting	<b>F1/F2 CAPABLE</b>
Outline Drawing	<b>0216000039</b>	Connection Drawing	<b>A-92646</b>



TYPE	HP	L
160ZBS-2	15	14.53 [369.0]
160ZBS-2	20	
160ZBS-2	25	
160ZBS-2	30	
160ZBS-2	40	17.87 [454.0]
160ZBS-2	50	

(MAY NOT BE DRAWN TO SCALE)

		TOLERANCES UNLESS SPECIFIED		Lincoln MOTOR		DRAWN MSG 01-25-2007	
		DEC.	INCHES	CHK	ML 01-25-2007	APPD	GK 01-25-2007
		.X	±.1				
		.XX	±.03				
		.XXX	±.005				
1	UPDATED TO CURRENT STANDARDS	DRS		.XXXX	±.0005		
NO.	REVISION	BY & DATE	CHK	ANG	±7'30"	FINISH	PREV
			RFP			CAD FILE 0216000039	
THIS DRAWING IN DESIGN AND DETAIL IS OUR PROPERTY AND MUST NOT BE USED EXCEPT IN CONNECTION WITH OUR WORK ALL RIGHTS OF DESIGN AND INVENTION ARE RESERVED THIS IS AN ELECTRONICALLY GENERATED DOCUMENT - DO NOT SCALE THIS PRINT						SIZE	DRAWING NO. PAGE OF REV.
						B	0216000039 1



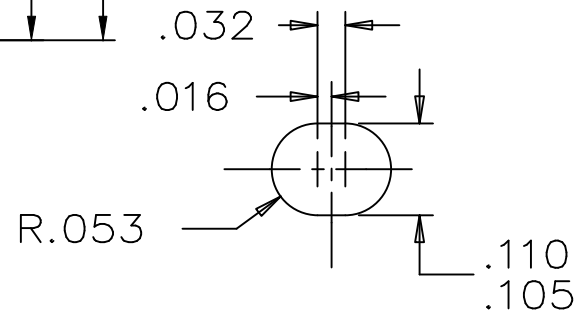
TO REVERSE DIRECTION OF ROTATION INTERCHANGE LEADS L1 AND L2. MOTOR MAY BE STARTED AND RUN ACROSS THE LINE ON THE DELTA CONNECTION.

A-92646

LINCOLN MOTORS

NOTES:

1. MATERIAL 304 STAINLESS STEEL
2. LETTERING AND ARTWORK BLACK
3. ALL DATA MUST BE HYDRAULIC OIL RESISTANT.



		TOLERANCES UNLESS SPECIFIED		REGAL-BELOIT <i>Motor Technologies Group</i>		DRAWN CTO 02-18-2004		
		DEC.	INCHES			CHK	ML 02-18-2004	
		.X	±.1			APPD	MS 02-18-2004	
		.XX	±.02	TITLE CONNECTION DIAGRAM PLATE		SCALE	1.5=1	
2	NAMEPLATE ONLY FOR 12 LEAD CN292003462	CTO 02-18-2004	.XXX	±.005			REF	
1	REISSUE WITH CORRECT DIAGRAM	CTO 02-16-2004	.XXXX	±.0005	MAT'L. 304 STAINLESS STEEL		FMF	
NO.	REVISION	BY & DATE	CHK	ANG	FINISH	PREV		
THIS DRAWING IN DESIGN AND DETAIL IS OUR PROPERTY AND MUST NOT BE USED EXCEPT IN CONNECTION WITH OUR WORK ALL RIGHTS OF DESIGN AND INVENTION ARE RESERVED THIS IS AN ELECTRONICALLY GENERATED DOCUMENT - DO NOT SCALE THIS PRINT		RFP 02-18-2004	CAD FILE 92646		SIZE	DRAWING NO.	PAGE OF	REV.
		DIST WA			A	92646		2



Data Sheet

Date: 1/19/2018

LM29666



Data @ 460 V

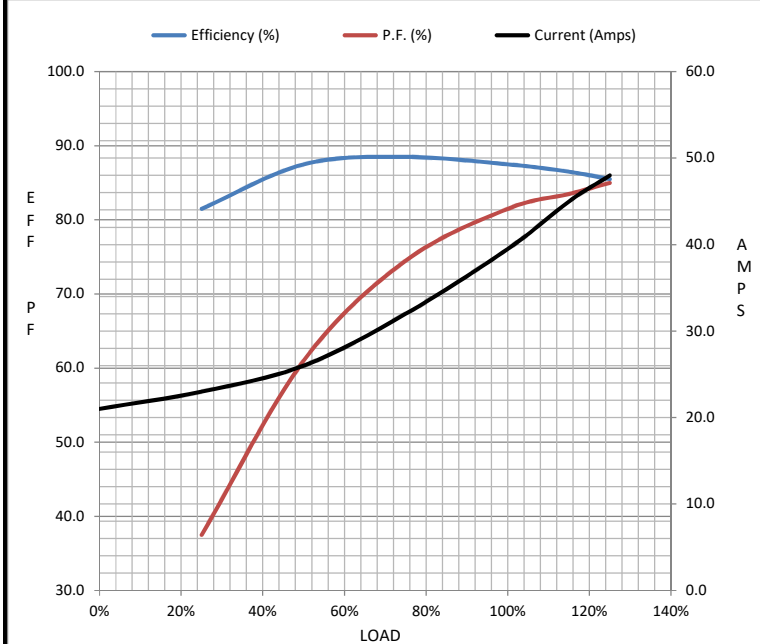
Motor Load Data

Load	0%	25%	50%	75%	100%	115%	125%	LR
Current (Amps)	21.0	23.0	26.0	32.0	39.5	45.0	48.0	250
Torque (ft-lb)	0.00	11.0	22.0	33.5	45.0	52.0	56.5	75.0
RPM	3600	3580	3555	3530	3500	3,490	3475	0
Efficiency (%)		81.5	87.5	88.5	87.5	86.5	85.5	
P.F. (%)	7.0	37.5	61.0	74.5	81.5	83.5	85.0	49.0

Motor Speed Data

	LR	Pull-Up	BD	Rated	Idle
Speed (RPM)	0	1800	2975	3500	3600
Current (Amps)	250	225	1,775	39.5	21.0
Torque (ft-lb)	75.0	70.0	100	45.0	0.00

Information Block				
HP	30.0			
Sync. RPM	3600			
Frame	160			
Enclosure	OPEN			
Construction	TDR			
Voltage	230/460 V			
Frequency	60 Hz			
Design	A			
LR Code letter	G			
Service Factor	1.15			
Temp Rise @ FL	0 °C			
Duty	30 MIN			
Ambient	40 °C			
Elevation	1,000 feet			
Rotor/Shaft wk <sup>2</sup>	0.00 Lb-Ft <sup>2</sup>			
Ref Wdg	2152207 NONE			
Sound Pressure @ 1M	999 dBA			
VFD Rating	NONE			
Outline Dwg	0216000039			
Conn. Diag	A-92646			
Additional Specifications:				
0				
0				
EQUIV CKT (OHMS / PHASE)				
R1	R2	X1	X2	Xm
0.0000	0.0000	0.0000	0.0000	0.0000



Speed - Torque Curve

