

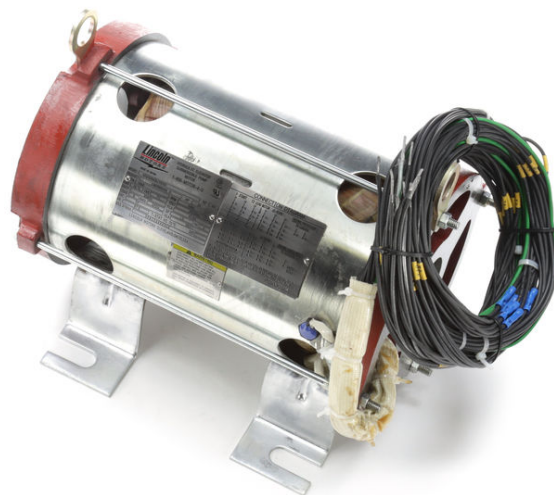
# PRODUCT INFORMATION PACKET



Model No: LM29660

Catalog No: LM29660

Elevator Duty Motor, 20 & 15 HP, 3 Ph, 60 & 60 Hz, 230/460 & 230/460 V, 3600 & 3600 RPM,  
160TZ Frame, OPEN



Regal and Leeson are trademarks of Regal Rexnord Corporation or one of its affiliated companies.

©2023 Regal Rexnord Corporation, All Rights Reserved. MC017097E



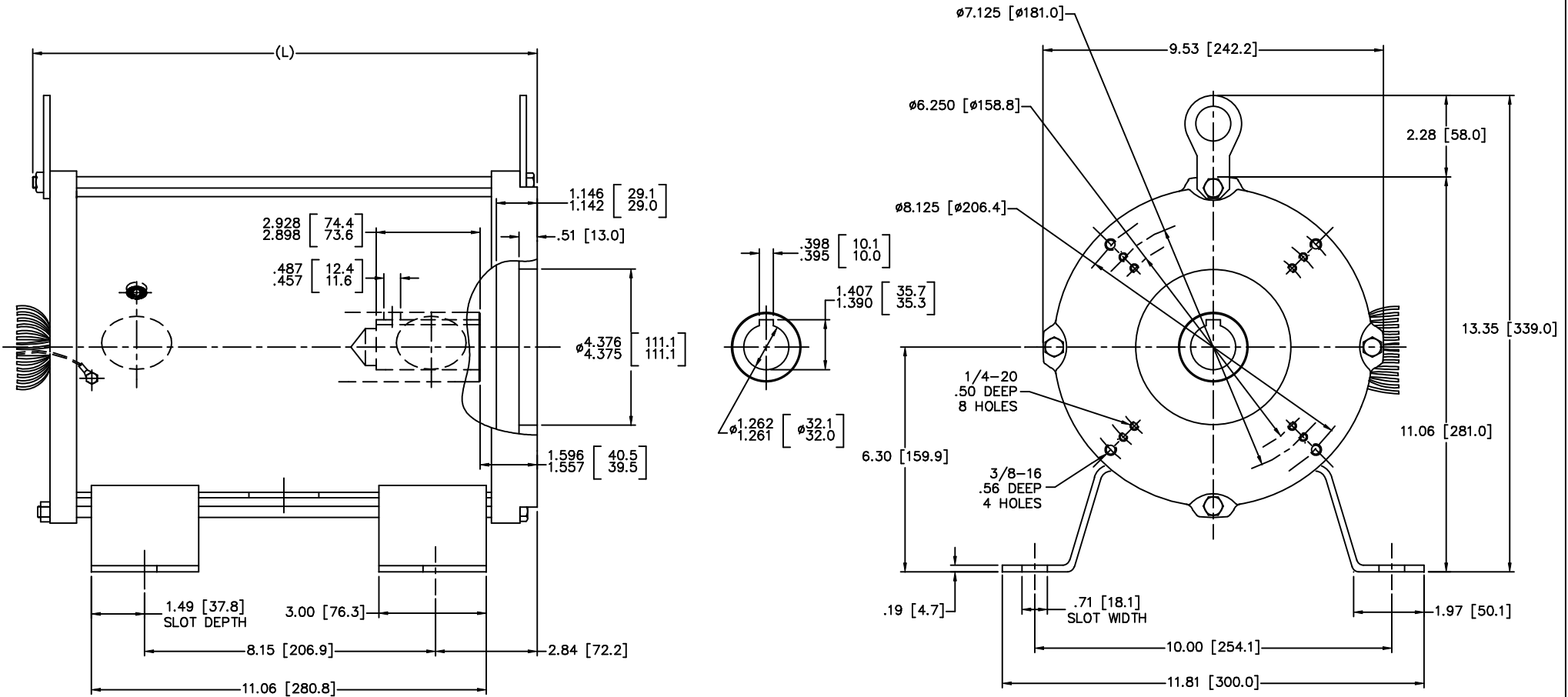


**Nameplate Specifications**

Phase	<b>3</b>	Output HP	<b>20 &amp; 15 Hp</b>
Output KW	<b>14.9 &amp; 11.2 kW</b>	Voltage	<b>230/460 &amp; 230/460 V</b>
Speed	<b>3515 &amp; 3535 rpm</b>	Service Factor	<b>1.0</b>
Frame	<b>160TZ</b>	Enclosure	<b>Open Enclosed</b>
Thermal Protection	<b>Thermostat</b>	Efficiency	<b>85.5 &amp; 85.5 %</b>
Ambient Temperature	<b>70 °C</b>	Frequency	<b>60 &amp; 60 Hz</b>
Current	<b>51/25.5 &amp; 39/19.5 A</b>	Power Factor	<b>86.2</b>
Duty	<b>120/80 Starts/Hour</b>	Insulation Class	<b>F</b>
Design Code	<b>B</b>	KVA Code	<b>G</b>
Drive End Bearing Size	<b>6307</b>	Opp Drive End Bearing Size	<b>6307</b>
UL	<b>Recognized</b>	CSA	<b>Y</b>
CE	<b>N</b>	IP Code	<b>10</b>
Number of Speeds	<b>1</b>		

**Technical Specifications**

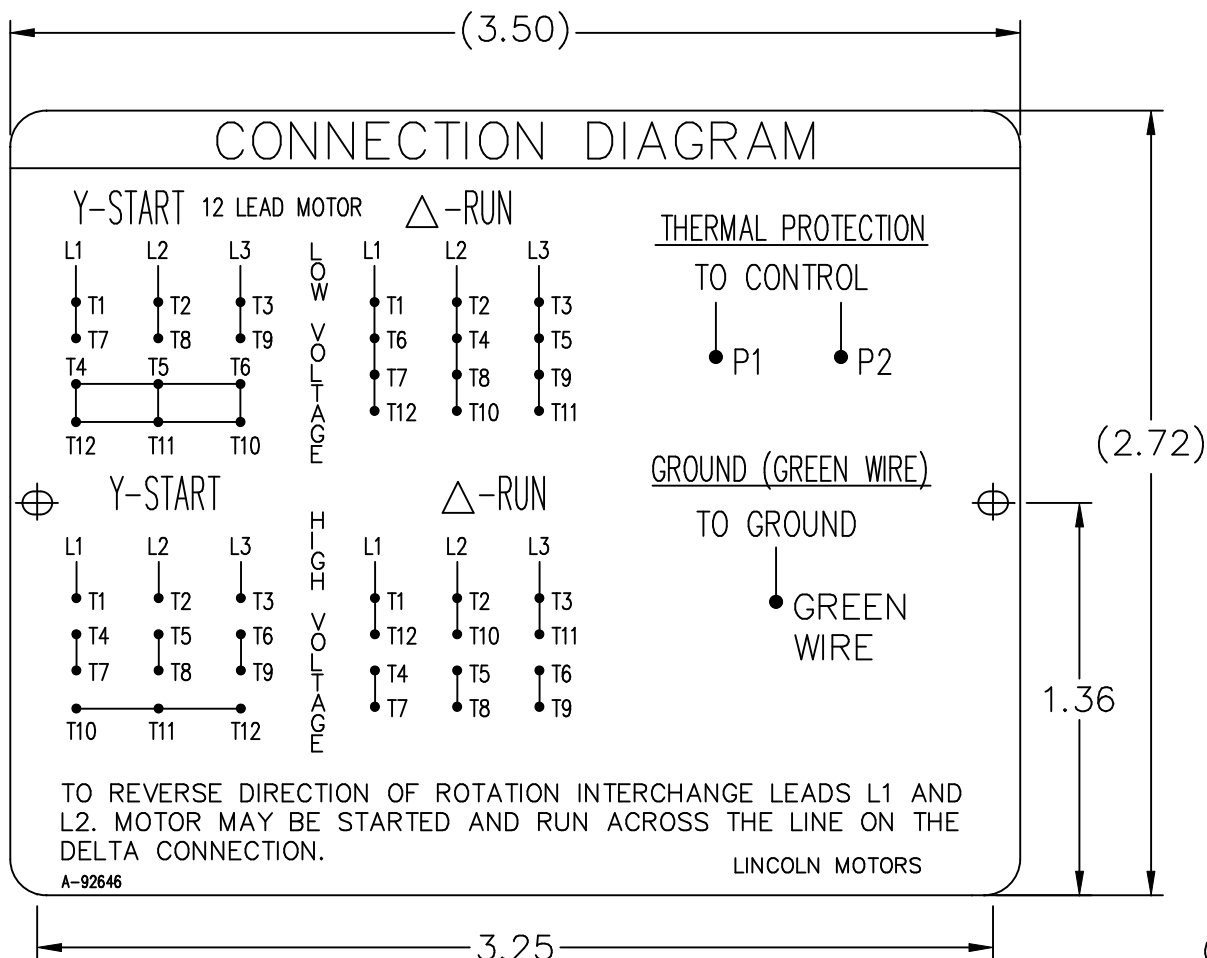
Electrical Type	<b>Squirrel Cage Induction Run</b>	Starting Method	<b>Wye Start Delta Run</b>
Poles	<b>2</b>	Rotation	<b>Reversible</b>
Resistance Main	<b>.84 Ohms</b>	Mounting	<b>Rigid Base</b>
Motor Orientation	<b>Horizontal</b>	Drive End Bearing	<b>Ball</b>
Opp Drive End Bearing	<b>Ball</b>	Frame Material	<b>Rolled Steel</b>
Shaft Type	<b>Single Special Extension</b>	Overall Length	<b>14.53 in</b>
Frame Length	<b>12.00 in</b>	Shaft Diameter	<b>1.250 in</b>
Shaft Extension	<b>2.92 in</b>	Assembly/Box Mounting	<b>F1/F2 CAPABLE</b>
Connection Drawing	<b>A-92646</b>	Outline Drawing	<b>0216000039</b>



TYPE	HP	L
160ZBS-2	15	14.53 [369.0]
160ZBS-2	20	
160ZBS-2	25	
160ZBS-2	30	
160ZBS-2	40	17.87 [454.0]
160ZBS-2	50	

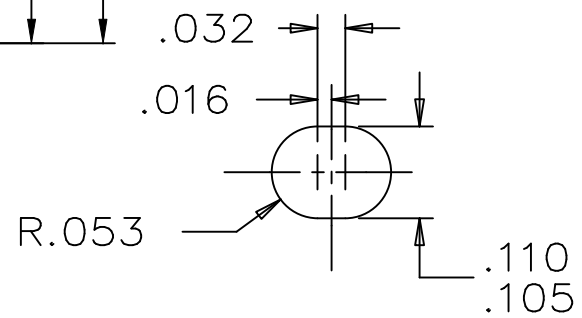
(MAY NOT BE DRAWN TO SCALE)

		TOLERANCES UNLESS SPECIFIED		Lincoln MOTOR		DRAWN MSG 01-25-2007	
		DEC.	INCHES	CHK	ML 01-25-2007	APPD	GK 01-25-2007
		.X	±.1				
		.XX	±.03				
		.XXX	±.005				
1	UPDATED TO CURRENT STANDARDS	DRS		.XXXX	±.0005		
NO.	REVISION	BY & DATE	CHK	ANG	FINISH	PREV	HEBEI
			RFP	±7'30"			
THIS DRAWING IN DESIGN AND DETAIL IS OUR PROPERTY AND MUST NOT BE USED EXCEPT IN CONNECTION WITH OUR WORK ALL RIGHTS OF DESIGN AND INVENTION ARE RESERVED THIS IS AN ELECTRONICALLY GENERATED DOCUMENT - DO NOT SCALE THIS PRINT						CAD FILE	0216000039
						SIZE	DRAWING NO. PAGE OF REV.
						B	0216000039 1



**NOTES:**

1. MATERIAL 304 STAINLESS STEEL
2. LETTERING AND ARTWORK BLACK
3. ALL DATA MUST BE HYDRAULIC OIL RESISTANT.



		TOLERANCES UNLESS SPECIFIED		REGAL-BELOIT <i>Motor Technologies Group</i>		DRAWN CTO 02-18-2004						
		DEC.	INCHES			CHK	ML 02-18-2004					
		.X	±.1	TITLE CONNECTION DIAGRAM PLATE		APPD	MS 02-18-2004					
		.XX	±.02			SCALE	1.5=1					
2	NAMEPLATE ONLY FOR 12 LEAD CN292003462	CTO	02-18-2004			REF						
1	REISSUE WITH CORRECT DIAGRAM	CTO	02-16-2004	MAT'L.	304 STAINLESS STEEL	FMF						
NO.	REVISION	BY & DATE	CHK	ANG	±7'30"	FINISH	PREV					
THIS DRAWING IN DESIGN AND DETAIL IS OUR PROPERTY AND MUST NOT BE USED EXCEPT IN CONNECTION WITH OUR WORK ALL RIGHTS OF DESIGN AND INVENTION ARE RESERVED THIS IS AN ELECTRONICALLY GENERATED DOCUMENT - DO NOT SCALE THIS PRINT				RFP	02-18-2004	CAD FILE	92646	SIZE	DRAWING NO.	PAGE	OF	REV.
				DIST	WA	A	92646	A	92646	2	2	

P.O. BOX 8003  
 WAUSAU, WI 54401-8003  
 PH. 715-675-3311



DATA VOLTS: 460

**CERTIFICATION DATA SHEET**

CONN. DIAGRAM: A-92646  
 OUTLINE: 0216000039  
 WINDING: 2152205

CAT #: LM29660

NONE 1

**TYPICAL MOTOR PERFORMANCE DATA**

HP	KW	SYNC RPM	FL RPM	FRAME	ENCLOSURE	TYPE	KVA CODE	DESIGN
20	14.9	3600	3515	160M	OPEN	TDR	G	B

PH	HZ	VOLTS	AMPS	START TYPE	DUTY	INSL	S.F.	AMB	ELEV.
3	60	230/460	53/26.5	VYE START DELTA RU	30 MIN	F	1.15	70	3300

F.L. EFF	86.5	3/4 LD EFF	87.5	1/2 LD EFF	86.5	GTD EFF	ELECT. TYPE
F.L. PF	80.0	3/4 LD PF	72.5	1/2 LD PF	58.5	68.0	SQ CAGE IND RUN

F.L. TORQUE	LR AMPS @ 460 V	L.R. TORQUE	B.D. TORQUE	F.L. RISE (°C)
30.0 LB-FT	175	50.0 LB-FT 167%	80.0 LB-FT 267%	0

PRESSURE @ 3	POWER	ROTOR WK²	MAX. LOAD WK²	SAFE STALL TIME	STARTS/HOUR	MOTOR WGT
999 dBA	1008 dBA	0.00 LB-FT²	0 LB-FT²	0 SEC.	80	0 LB.

\*\*\* SUPPLEMENTAL INFORMATION \*\*\*

DE BRACKET TYPE	ODE BRACKET TYPE	MOUNT TYPE	MOTOR ORIENTATION	SEVERE DUTY	HAZARDOUS LOCATION	DRIP COVER	SCREENS	PAINT
STANDARD	STANDARD	RIGID	HORIZONTAL	NO	NONE	NO	NONE	GRAY - LINCOLN

BEARINGS		GREASE	SHAFT TYPE	SPECIAL DE	SPECIAL ODE	SHAFT MATERIAL	FRAME MATERIAL
DE	ODE	POLYREX EM	SGL SPL EXT	ELEVATOR MOTOR SH	NONE	AISI 1045 (C-240)	ROLLED STEEL
BALL	BALL						
NONE	NONE						

THERMOSTATS	PROTECTORS	WDG RTD's	BRG RTD's	THERMISTORS	CONTROL	SPACE HEATERS
TSTATS (N/C)	NOT	NONE	NONE	NONE	FALSE	NA

R1 (ohms/ph)	R2 (ohms/ph)	X1 (ohms/ph)	X2 (ohms/ph)	Xm (ohms/ph)	VIBRATION (in/sec)	FLOAT
0	0	0	0	0	0.150	ODE

* N O T E S *	INVERTER TORQUE: NONE INV. HP SPEED RANGE: NONE					
	ENCODER: NONE NONE NONE					
	NONE PPR					

DATE: 1/29/2018	BRAKE: NONE NONE NONE FT-LB: NA VOLTAGE: NONE HZ: UL: V-INS, CONST UL REC
-----------------	---

Data Sheet

Date: 1/29/2018

LM29660



Data @ 460 V

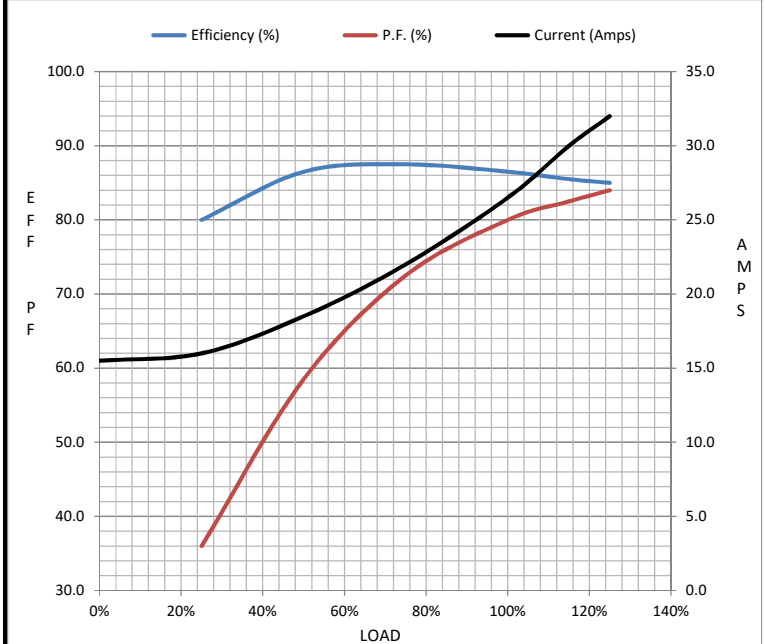
Motor Load Data

Load	0%	25%	50%	75%	100%	115%	125%	LR
Current (Amps)	15.5	16.0	18.5	22.0	26.5	30.0	32.0	175
Torque (ft-lb)	0.00	7.5	15.0	22.5	30.0	31.5	37.5	50.0
RPM	3600	3580	3560	3535	3515	3,500	3485	0
Efficiency (%)		80.0	86.5	87.5	86.5	85.5	85.0	
P.F. (%)	7.0	36.0	58.5	72.5	80.0	82.5	84.0	48.0

Motor Speed Data

	LR	Pull-Up	BD	Rated	Idle
Speed (RPM)	0	1800	3000	3515	3600
Current (Amps)	175	160	115	26.5	15.5
Torque (ft-lb)	50.0	45.0	80.0	30.0	0.00

Information Block				
HP	20.0			
Sync. RPM	3600			
Frame	160			
Enclosure	OPEN			
Construction	TDR			
Voltage	230/460 V			
Frequency	60 Hz			
Design	A			
LR Code letter	G			
Service Factor	1.15			
Temp Rise @ FL	0 °C			
Duty	30 MIN			
Ambient	40 °C			
Elevation	1,000 feet			
Rotor/Shaft wk <sup>2</sup>	0.00 Lb-Ft <sup>2</sup>			
Ref Wdg	2152205 NONE			
Sound Pressure @ 1M	999 dBA			
VFD Rating	NONE			
Outline Dwg	0216000039			
Conn. Diag	A-92646			
Additional Specifications:				
0				
0				
EQUIV CKT (OHMS / PHASE)				
R1	R2	X1	X2	Xm
0.0000	0.0000	0.0000	0.0000	0.0000



Speed - Torque Curve

