

# PRODUCT INFORMATION PACKET



Model No: LM29657

Catalog No: LM29657

Elevator Duty Motor, 15 & 10 HP, 3 Ph, 60 & 60 Hz, 230/460 & 230/460 V, 3600 & 3600 RPM,  
160TZ Frame, DP



Regal and Leeson are trademarks of Regal Rexnord Corporation or one of its affiliated companies.

©2023 Regal Rexnord Corporation, All Rights Reserved. MC017097E



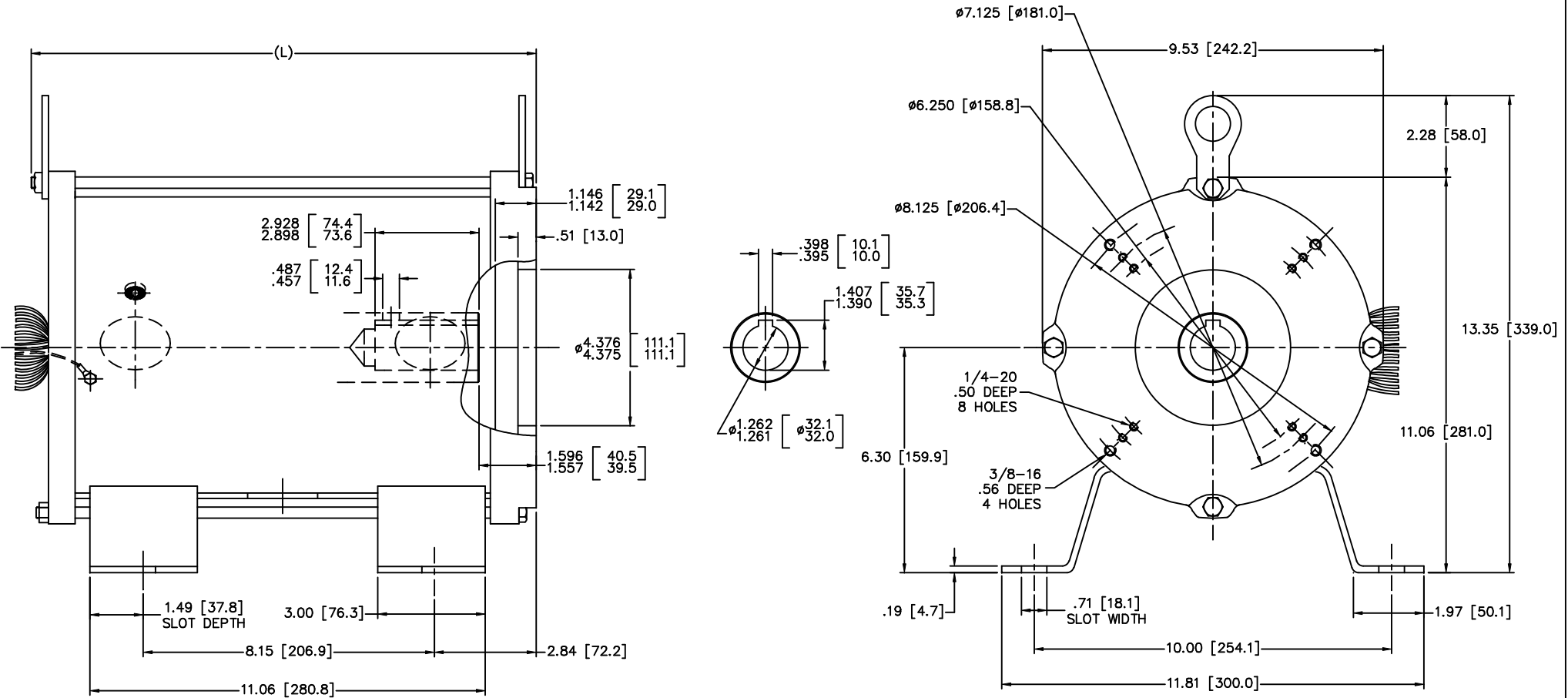


### Nameplate Specifications

Phase	3	Output HP	15 & 10 Hp
Output KW	11.2 & 7.5 kW	Voltage	230/460 & 230/460 V
Speed	3525 & 3535 rpm	Service Factor	1.0 & 1.0
Frame	160TZ	Enclosure	Drip Proof
Thermal Protection	Thermostat	Efficiency	82.5 & 76.5 %
Ambient Temperature	70 °C	Frequency	60 & 60 Hz
Current	42/21 & 32/16 A	Power Factor	81.3
Duty	120/80 Starts/Hour	Insulation Class	F
Design Code	B	KVA Code	F
Drive End Bearing Size	6307	Opp Drive End Bearing Size	6307
UL	Recognized	CSA	Y
CE	N	IP Code	12
Number of Speeds	1		

### Technical Specifications

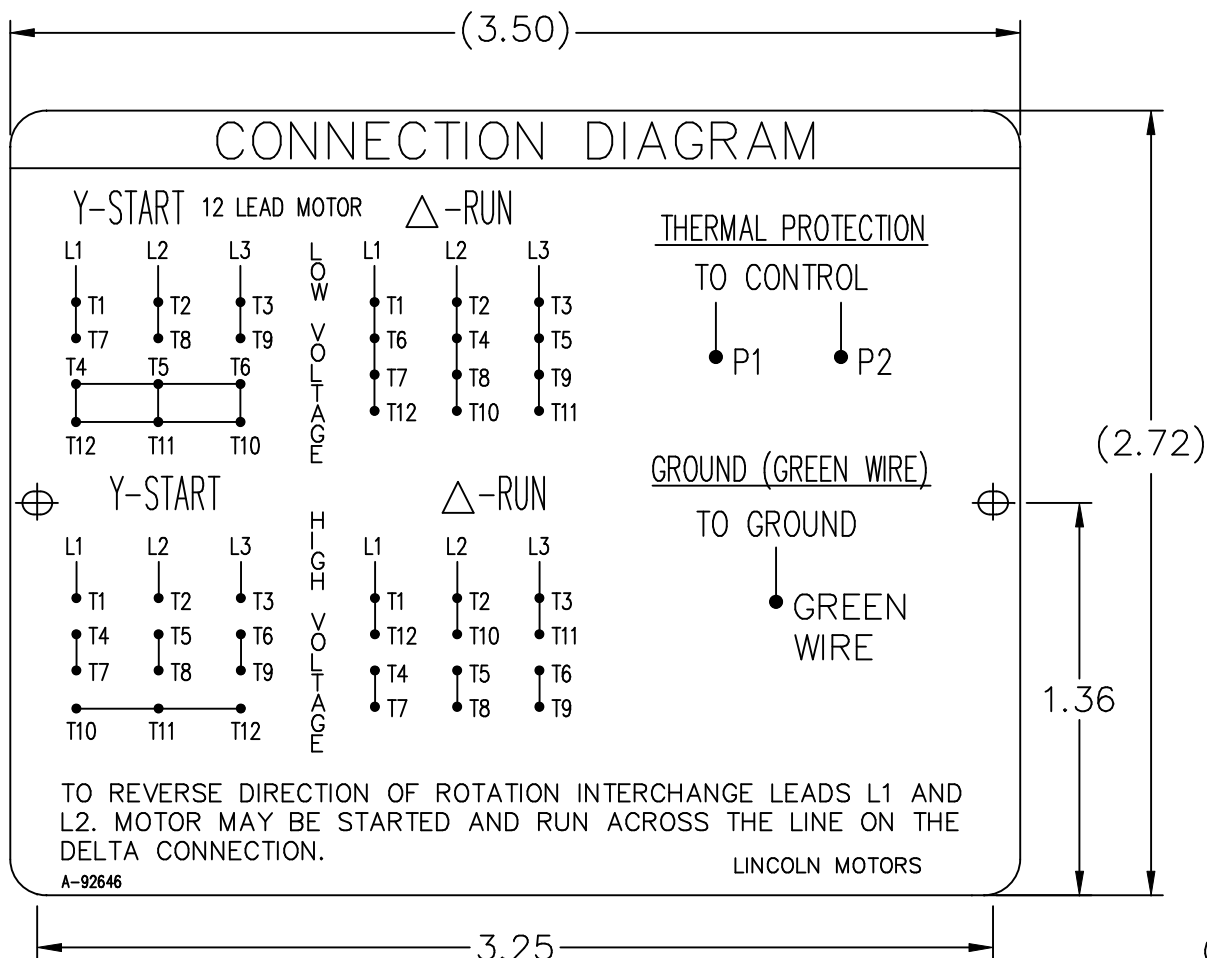
Electrical Type	Squirrel Cage Induction Run	Starting Method	Wye Start Delta Run
Poles	2	Rotation	Reversible
Resistance Main	1.27 Ohms	Mounting	Rigid Base
Motor Orientation	Horizontal	Drive End Bearing	Ball
Opp Drive End Bearing	Ball	Frame Material	Rolled Steel
Shaft Type	Single Special Extension	Overall Length	14.53 in
Frame Length	12.00 in	Shaft Diameter	1.250 in
Shaft Extension	2.92 in	Assembly/Box Mounting	F1/F2 CAPABLE
Connection Drawing	A-92646	Outline Drawing	0216000039



TYPE	HP	L
160ZBS-2	15	14.53 [369.0]
160ZBS-2	20	
160ZBS-2	25	
160ZBS-2	30	
160ZBS-2	40	17.87 [454.0]
160ZBS-2	50	

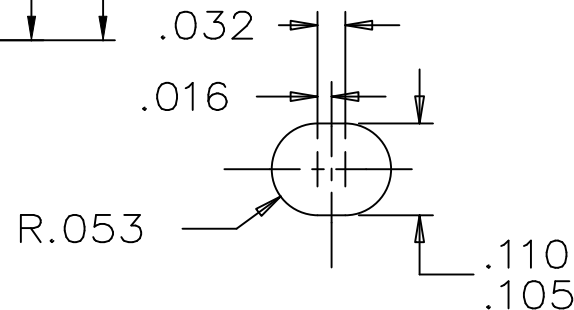
(MAY NOT BE DRAWN TO SCALE)

		TOLERANCES UNLESS SPECIFIED		Lincoln MOTOR		DRAWN MSG 01-25-2007	
		DEC.	INCHES	CHK	ML 01-25-2007	APPD	GK 01-25-2007
		.X	±.1	TITLE OUTLINE - SUBMERSIBLE ELEVATOR PUMP		SCALE 3-8	
		.XX	±.03	160ZBS FR. - 3 PHASE - DUAL DIMENSIONS		REF	
		.XXX	±.005	MAT'L		FMF HEBEI	
		.XXXX	±.0005	FINISH		PREV	
1	UPDATED TO CURRENT STANDARDS	DRS		CAD FILE 0216000039		SIZE B	DRAWING NO. 0216000039
NO.	REVISION	BY & DATE	CHK	ANG	±7'30"	PAGE	OF
THIS DRAWING IN DESIGN AND DETAIL IS OUR PROPERTY AND MUST NOT BE USED EXCEPT IN CONNECTION WITH OUR WORK ALL RIGHTS OF DESIGN AND INVENTION ARE RESERVED THIS IS AN ELECTRONICALLY GENERATED DOCUMENT - DO NOT SCALE THIS PRINT				RFP		1	
				DIST			REV. 1



NOTES:

1. MATERIAL 304 STAINLESS STEEL
2. LETTERING AND ARTWORK BLACK
3. ALL DATA MUST BE HYDRAULIC OIL RESISTANT.



		TOLERANCES UNLESS SPECIFIED		REGAL-BELOIT <i>Motor Technologies Group</i>		DRAWN CTO 02-18-2004						
		DEC.	INCHES			CHK	ML 02-18-2004					
		.X	±.1	TITLE CONNECTION DIAGRAM PLATE		APPD	MS 02-18-2004					
		.XX	±.02			SCALE	1.5=1					
2	NAMEPLATE ONLY FOR 12 LEAD CN292003462	CTO	02-18-2004			.XXX	±.005	REF				
1	REISSUE WITH CORRECT DIAGRAM	CTO	02-16-2004	.XXXX	±.0005	MAT'L.	304 STAINLESS STEEL					
NO.	REVISION	BY & DATE	CHK	ANG	±7'30"	FINISH	PREV					
THIS DRAWING IN DESIGN AND DETAIL IS OUR PROPERTY AND MUST NOT BE USED EXCEPT IN CONNECTION WITH OUR WORK ALL RIGHTS OF DESIGN AND INVENTION ARE RESERVED THIS IS AN ELECTRONICALLY GENERATED DOCUMENT - DO NOT SCALE THIS PRINT				RFP	02-18-2004	CAD FILE	92646	SIZE	DRAWING NO.	PAGE	OF	REV.
				DIST	WA	A	92646	A	92646	2	2	

P.O. BOX 8003  
 WAUSAU, WI 54401-8003  
 PH. 715-675-3311



DATA VOLTS: 460

**CERTIFICATION DATA SHEET**

CONN. DIAGRAM: A-92646  
 OUTLINE: 0216000039  
 WINDING: 2152204

CAT #: LM29657

NONE 1

**TYPICAL MOTOR PERFORMANCE DATA**

HP	KW	SYNC RPM	FL RPM	FRAME	ENCLOSURE	TYPE	KVA CODE	DESIGN
15	11.2	3600	3500	160L	DP	TDR	H	A

PH	HZ	VOLTS	AMPS	START TYPE	DUTY	INSL	S.F.	AMB	ELEV.
3	60	230/460	41/20.5	VYE START DELTA RU	30 MIN	F	1.15	70	3300

F.L. EFF	86.5	3/4 LD EFF	87.5	1/2 LD EFF	86.5	GTD EFF	68.0	ELECT. TYPE
F.L. PF	78.5	3/4 LD PF	70.0	1/2 LD PF	56.0	SQ CAGE IND RUN		

F.L. TORQUE	LR AMPS @ 460 V	L.R. TORQUE	B.D. TORQUE	F.L. RISE (°C)
22.5 LB-FT	125	36.0 LB-FT 160%	62.0 LB-FT 276%	0

PRESSURE @ 3	POWER	ROTOR WK²	MAX. LOAD WK²	SAFE STALL TIME	STARTS/HOUR	MOTOR WGT
999 dBA	1008 dBA	0.00 LB-FT²	0 LB-FT²	10 SEC.	80	0 LB.

\*\*\* SUPPLEMENTAL INFORMATION \*\*\*

DE BRACKET TYPE	ODE BRACKET TYPE	MOUNT TYPE	MOTOR ORIENTATION	SEVERE DUTY	HAZARDOUS LOCATION	DRIP COVER	SCREENS	PAINT
STANDARD	STANDARD	RIGID	HORIZONTAL	NO	NONE	NO	NONE	GRAY - LINCOLN

BEARINGS		GREASE	SHAFT TYPE	SPECIAL DE	SPECIAL ODE	SHAFT MATERIAL	FRAME MATERIAL
DE	ODE	POLYREX EM	SGL SPL EXT	ELEVATOR MOTOR SH	NONE	AISI 1045 (C-240)	ROLLED STEEL
BALL	BALL						
NONE	NONE						

THERMOSTATS	PROTECTORS	WDG RTD's	BRG RTD's	THERMISTORS	CONTROL	SPACE HEATERS
TSTATS (N/C)	NOT	NONE	NONE	NONE	FALSE	NA

R1 (ohms/ph)	R2 (ohms/ph)	X1 (ohms/ph)	X2 (ohms/ph)	Xm (ohms/ph)	VIBRATION (in/sec)	FLOAT
0	0	0	0	0	0.150	ODE

* N O T E S *	INVERTER TORQUE: NONE	
	INV. HP SPEED RANGE: NONE	
	ENCODER: NONE	
	NONE	
	NONE NONE PPR	

DATE: 1/18/2018	BRAKE: NONE	
	NONE NONE NONE	
	FT-LB: NA	HZ:
	VOLTAGE: NONE	

UL: V-INS, CONST UL REC

Data Sheet

Date: 1/18/2018

LM29657



Data @ **460 V**

Motor Load Data

Load	0%	25%	50%	75%	100%	115%	125%	LR
Current (Amps)	12.5	13.0	14.5	17.0	20.5	23.0	24.5	125
Torque (ft-lb)	0.00	5.5	11.0	16.5	22.5	26.0	28.5	36.0
RPM	3600	3578	3555	3535	3500	3,490	3480	0
Efficiency (%)		79.5	86.5	87.5	86.5	86.5	85.5	
P.F. (%)	7.0	35.0	56.0	70.0	78.5	81.5	83.0	48.0

Motor Speed Data

	LR	Pull-Up	BD	Rated	Idle
Speed (RPM)	0	1800	2975	3500	3600
Current (Amps)	125	115	100	20.5	12.5
Torque (ft-lb)	36.0	32.0	62.0	22.5	0.00

Information Block				
HP	15.0			
Sync. RPM	3600			
Frame	160			
Enclosure	DP			
Construction	TDR			
Voltage	230/460 V			
Frequency	60 Hz			
Design	B			
LR Code letter	H			
Service Factor	1.15			
Temp Rise @ FL	0 °C			
Duty	30 MIN			
Ambient	40 °C			
Elevation	1,000 feet			
Rotor/Shaft wk <sup>2</sup>	0.00 Lb-Ft <sup>2</sup>			
Ref Wdg	2152204 NONE			
Sound Pressure @ 1M	999 dBA			
VFD Rating	NONE			
Outline Dwg	0216000039			
Conn. Diag	A-92646			
Additional Specifications:				
0				
0				
EQUIV CKT (OHMS / PHASE)				
R1	R2	X1	X2	Xm
0.0000	0.0000	0.0000	0.0000	0.0000

