

# PRODUCT INFORMATION PACKET



Model No: LM29577

Catalog No: LM29577

General Purpose Motor, 30 & 30 HP, 3 Ph, 60 & 50 Hz, 230/460 & 200/400 V, 1800 & 1500 RPM,  
286T Frame, DP



Regal and Leeson are trademarks of Regal Rexnord Corporation or one of its affiliated companies.

©2023 Regal Rexnord Corporation, All Rights Reserved. MC017097E



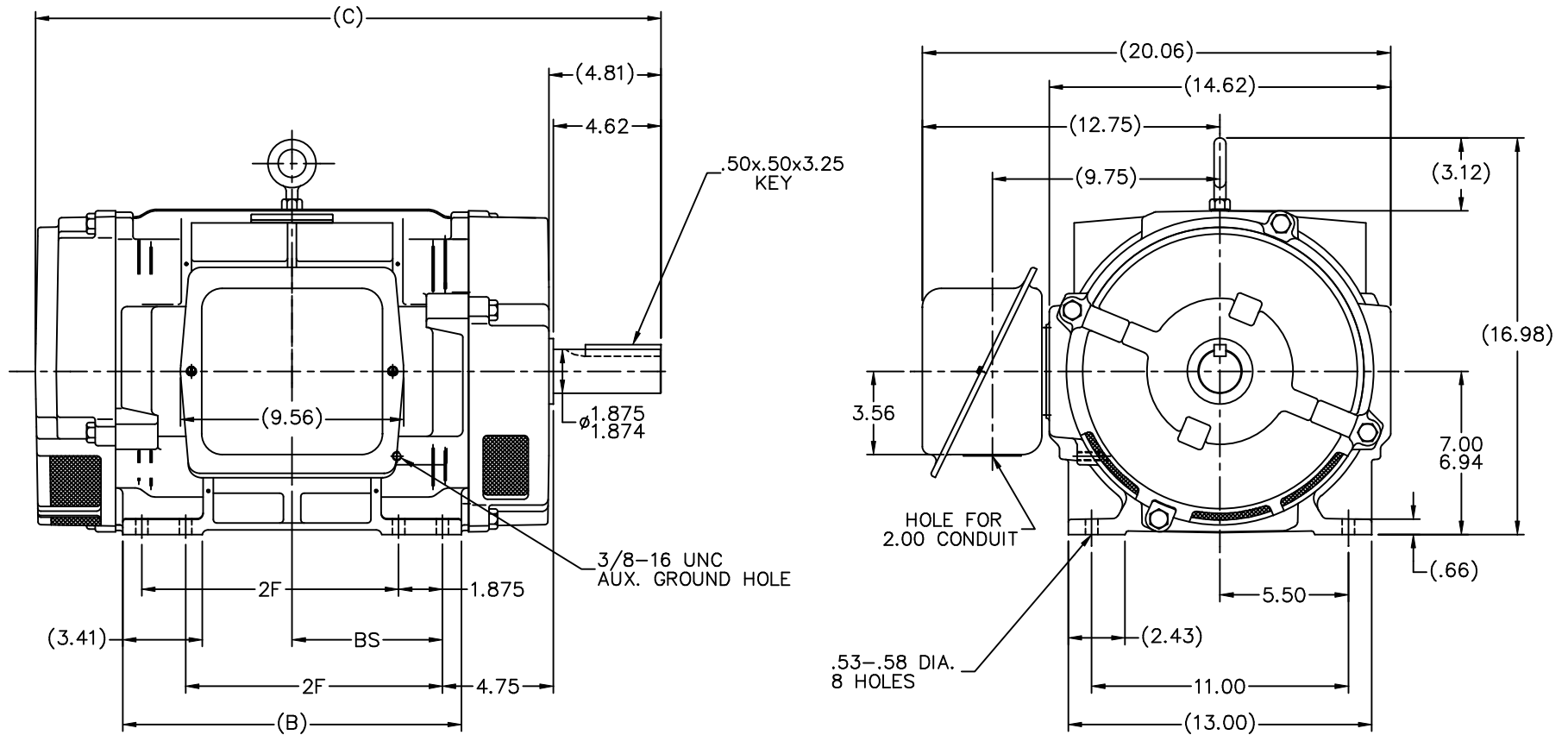


## Nameplate Specifications

Phase	3	Output HP	30 & 30 Hp
Output KW	22.4 & 22.4 kW	Voltage	230/460 & 200/400 V
Speed	1775 & 1472 rpm	Service Factor	1.25 & 1.15
Frame	286T	Enclosure	Drip Proof
Thermal Protection	No Protection	Efficiency	94.1 & 93 %
Ambient Temperature	40 °C	Frequency	60 & 50 Hz
Current	74/37 & 85/42.5 A	Power Factor	81
Duty	Continuous	Insulation Class	F
Design Code	B	KVA Code	G
Drive End Bearing Size	6311	Opp Drive End Bearing Size	6210
UL	No	CSA	Y
CE	Y	IP Code	12
Number of Speeds	1		

## Technical Specifications

Electrical Type	Squirrel Cage Induction Run	Starting Method	Wye Start Delta Run
Poles	4	Rotation	Reversible
Resistance Main	.22 Ohms	Mounting	Rigid Base
Motor Orientation	Horizontal	Drive End Bearing	Ball
Opp Drive End Bearing	Ball	Frame Material	Cast Iron
Shaft Type	T	Overall Length	26.81 in
Frame Length	15.12 in	Shaft Diameter	1.875 in
Shaft Extension	4.62 in	Assembly/Box Mounting	F1/F2 CAPABLE
Connection Drawing	A-EE7358-LN	Outline Drawing	B-SS207470LN-1512



## NOTES:

- CONDUIT BOX CAN BE ROTATED IN 90° STEPS.
- CONDUIT BOX CAN BE MOUNTED ON OPPOSITE SIDE BY REMOVING BRACKETS AND TURNING FRAME 180°.
- NAMEPLATE TO BE READ FROM CONDUIT BOX SIDE OF MOTOR.

DASH	FRAME	B	C	2F	BS		
1325	284T	12.63	24.94	9.50	5.50		02-17-1000
1512	286T	14.50	26.81	11.00	6.44		

				TOLERANCES UNLESS SPECIFIED		Lincoln MOTOR	DRAWN BJW 3/20/2000	
				DEC.	INCHES		CHK	ML 3/21/2000
				.X	±.1		APPD	TB 3/21/2000
				.XX	±.03		SCALE	7=32
2	ADDED SCREENS TO BRACKETS	MU80368	TJW 6/26/2007	MSG	.XXX ±.005	TITLE OUTLINE	280 FR. - TS - DR.PR. - CAST IRON	REF
1	NEW DRAWING		BJW 3/21/2000		.XXXX ±.0005	MAT'L		FMF
NO.	REVISION	BY & DATE	CHK	ANG	±7°30"	FINISH	PREV	
THIS DRAWING IN DESIGN AND DETAIL IS OUR PROPERTY AND MUST NOT BE USED EXCEPT IN CONNECTION WITH OUR WORK ALL RIGHTS OF DESIGN AND INVENTION ARE RESERVED THIS IS AN ELECTRONICALLY GENERATED DOCUMENT - DO NOT SCALE THIS PRINT						RFP	CAD FILE SS207470LN	SIZE B DRAWING NO. PAGE 1 OF 1 REV.
						DIST LB		SS207470LN 2

ERROR: syntaxerror  
OFFENDING COMMAND: --nostringval--

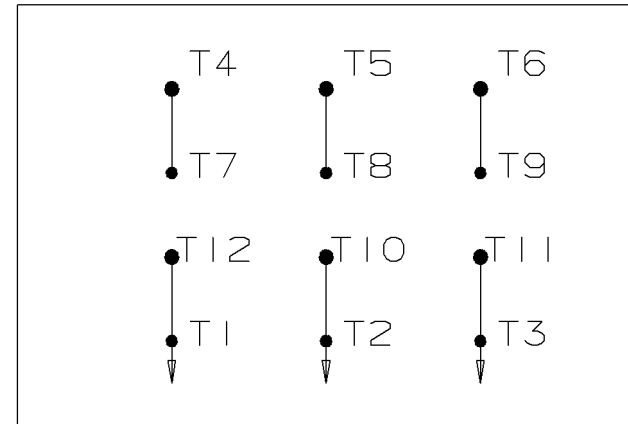
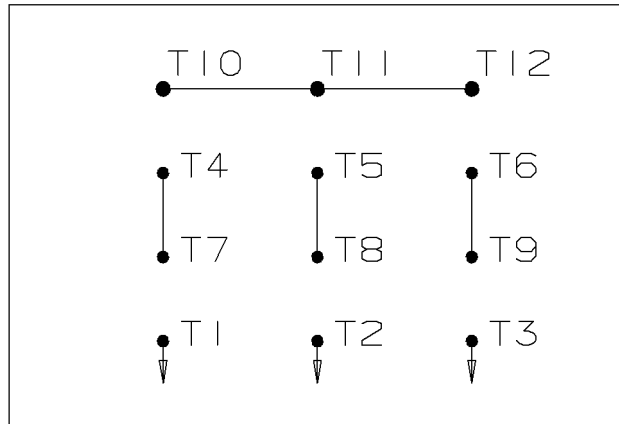
STACK:

/p2e  
-savelevel-

### WYE START

## HIGH VOLTAGE

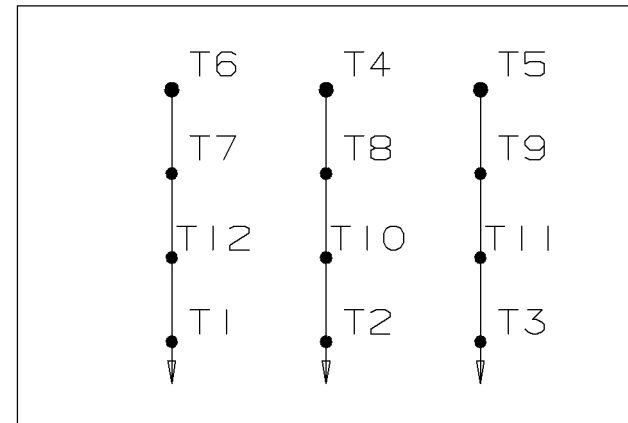
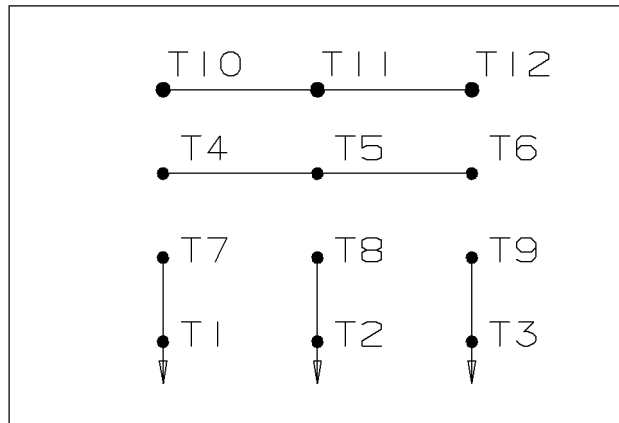
### DELTA RUN



### WYE START

## LOW VOLTAGE

### DELTA RUN



4/2 CKTY Δ

				✓ UNLESS OTHERWISE SPECIFIED DIMENSIONS ARE IN INCHES TOL. ON XX±.02 XXX±.005 XXXX±.0005 ANGLES± 7°30"			
				MAX. SURFACE ROUGHNESS UNLESS OTHERWISE NOTED		DRAWN BY DRS CHKD BY ML	12-07-1999 12-07-1999
1	12-07-1999	NEW DRAWING	DRS	MATERIAL			APPD BY TB 12-07-1999
REV	DATE	CHANGE	NAME	PART NAME CONNECTION DIAGRAM			DRWG NO A- EE7358-LN
				PURCHASED		CADD FILE NO.	EE7358-LN



**CERTIFICATION DATA SHEET**

**2100 WASHINGTON ST.  
GRAFTON, WI  
PH. 262-277-8810**

**CONN. DIAGRAM:** A-EE7358-LN  
**OUTLINE:** B-SS207470LN-1512  
**WINDING #:** K2864304 1

**CATALOG :** LM29577

**MOUNTING:** F1/F2 CAPABLE

**TYPICAL MOTOR PERFORMANCE DATA**

HP	kW	SYNC. RPM	F.L. RPM	FRAME	ENCLOSURE	KVA CODE	DESIGN
30&30	22.4&22.4	1800	1775&1472	286T	DP	G	B

PH	Hz	VOLTS	AMPS	START TYPE	DUTY	INSL	S.F.	AMB°C
3	60/50	230/460&200/400	74/37&85/42.5	WYE START DELTA RUN	CONTINUOUS	F3	1.25/1.15	40

<b>FULL LOAD EFF:</b>	94.1&93	<b>3/4 LOAD EFF:</b>	94.1	<b>1/2 LOAD EFF:</b>	93.6	<b>GTD. EFF</b>		<b>ELEC. TYPE</b>
<b>FULL LOAD PF:</b>	81&82	<b>3/4 LOAD PF:</b>	76.5	<b>1/2 LOAD PF:</b>	66	93.6		SQ CAGE IND RUN

F.L. TORQUE	LOCKED ROTOR AMPS	L.R. TORQUE	B.D. TORQUE	F.L. RISE°C
89 LB-FT	416 / 208	160 LB-FT 180 %	220 LB-FT 247 %	25

SOUND PRESSURE @ 3 FT.	SOUND POWER	ROTOR WK^2	MAX. WK^2	SAFE STALL TIME	STARTS / HOUR	APPROX. MOTOR WGT
72 dBA	82 dBA	4.7 LB-FT^2	- LB-FT^2	20 SEC.	-	460 LBS.

**\*\*\* SUPPLEMENTAL INFORMATION \*\*\***

DE BRACKET TYPE	ODE BRACKET TYPE	MOUNT TYPE	ORIENTATION	SEVERE DUTY	HAZARDOUS LOCATION	DRIP COVER	SCREENS	PAINT
STANDARD	STANDARD	RIGID	HORIZONTAL	FALSE	NONE	FALSE	NONE	GRAY - LINCOLN

BEARINGS		GREASE	SHAFT TYPE	SPECIAL DE	SPECIAL ODE	SHAFT MATERIAL	FRAME MATERIAL
DE	ODE						
BALL	BALL						
6311	6210	POLYREX EM	T	NONE	NONE	1045 HOT ROLLED (C-204)	CAST IRON

THERMO-PROTECTORS				THERMISTORS	CONTROL	SPACE HEATERS
THERMOSTATS	PROTECTORS	WDG RTDs	BRG RTDs			
NONE	NOT	NONE	NONE	NONE	FALSE	NONE VOLTS

\*  
N  
O  
T  
E  
S

<b>INVERTER TORQUE:</b> NONE
<b>INV. HP SPEED RANGE:</b> NONE
<b>ENCODER:</b> NONE NONE NONE NONE NONE PPR
<b>BRAKE:</b> NONE NONE NONE P/N NONE NONE NONE FT-LB NONE V NONE Hz

## Data Sheet

Date: 1/31/2018

LM29577



Data @ 460 V

## Motor Load Data

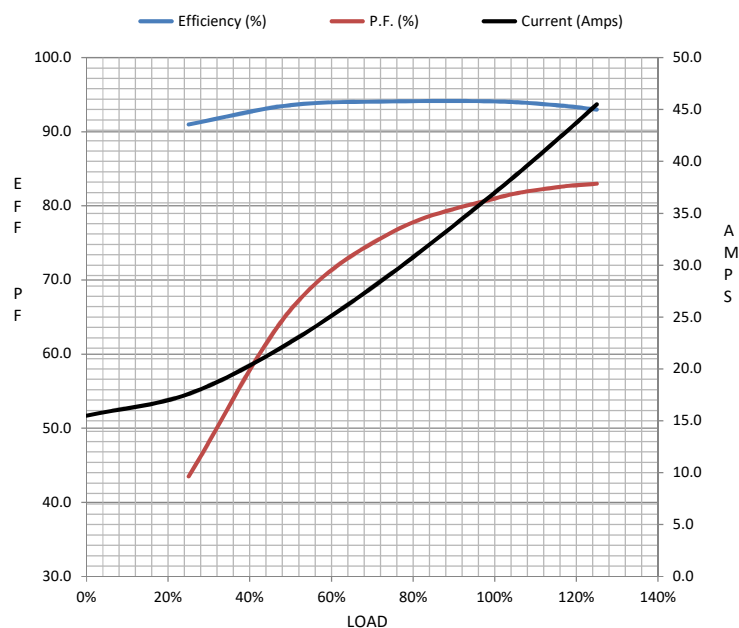
Load	0%	25%	50%	75%	100%	115%	125%	LR	
Current (Amps)	15.5	17.6	22.6	29.3	37.0	42.0	45.5	208	
Torque (ft-lb)	0.00	22.0	44.0	66.5	89.0	102	112	160	
RPM	1800	1792	1788	1782	1772	1,770	1768	0	
Efficiency (%)		91.0	93.6	94.1	94.1	93.6	93.0		
P.F. (%)	3.0	43.5	66.0	76.5	81.0	82.5	83.0	35.5	

## Motor Speed Data

	LR	Pull-Up	BD	Rated	Idle
Speed (RPM)	0	900	1678	1772	1800
Current (Amps)	208	187	129	37.0	15.5
Torque (ft-lb)	160	136	220	89.0	0.00

## Information Block

HP	30.0			
Sync. RPM	1800			
Frame	286			
Enclosure	DP			
Construction	TDN			
Voltage	230/460#200/400		V	
Frequency	60		Hz	
Design	B			
LR Code letter	G			
Service Factor	1.15			
Temp Rise @ FL	45		° C	
Duty	CONT			
Ambient	40		° C	
Elevation	1,000		feet	
Rotor/Shaft wk²	4.7		Lb-Ft²	
Ref Wdg	K2864304	NONE		
Sound Pressure @ 1M	72		dBA	
VFD Rating	NONE			
Outline Dwg	B-SS207470LN-1512			
Conn. Diag	A-EE7358-LN			
Additional Specifications:				
0				
0				
EQUIV CKT (OHMS / PHASE)				
R1	R2	X1	X2	Xm
0.1320	0.1090	0.7090	0.8690	16.8210



## Speed - Torque Curve

