

PRODUCT INFORMATION PACKET



Model No: LM29576

Catalog No: LM29576

General Purpose Motor, 25 & 25 HP, 3 Ph, 60 & 50 Hz, 230/460 & 200/400 V, 1800 & 1500 RPM,
284T Frame, DP



Regal and Leeson are trademarks of Regal Rexnord Corporation or one of its affiliated companies.

©2023 Regal Rexnord Corporation, All Rights Reserved. MC017097E



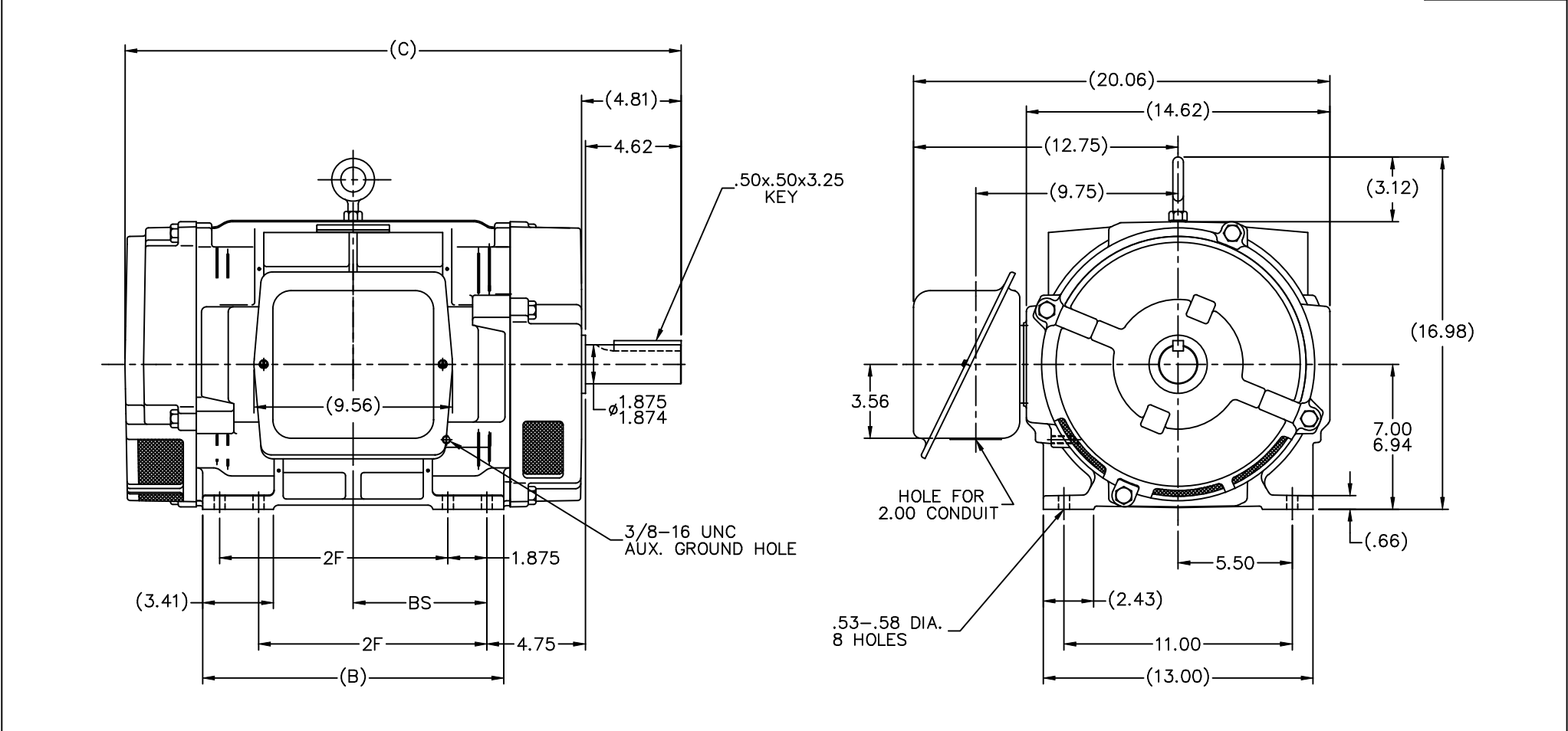


Nameplate Specifications

Phase	3	Output HP	25 & 25 Hp
Output KW	18.7 & 18.7 kW	Voltage	230/460 & 200/400 V
Speed	1775 & 1470 rpm	Service Factor	1.25 & 1.15
Frame	284T	Enclosure	Drip Proof
Thermal Protection	No Protection	Efficiency	93.6 & 92.4 %
Ambient Temperature	40 °C	Frequency	60 & 50 Hz
Current	64/32 & 74/37 A	Power Factor	78
Duty	Continuous	Insulation Class	F
Design Code	B	KVA Code	G
Drive End Bearing Size	6311	Opp Drive End Bearing Size	6210
UL	No	CSA	Y
CE	Y	IP Code	23
Number of Speeds	1		

Technical Specifications


Electrical Type	Squirrel Cage Induction Run	Starting Method	Wye Start Delta Run
Poles	4	Rotation	Reversible
Resistance Main	65 Ohms	Mounting	Rigid Base
Motor Orientation	Horizontal	Drive End Bearing	Ball
Opp Drive End Bearing	Ball	Frame Material	Cast Iron
Shaft Type	T	Overall Length	24.94 in
Frame Length	13.25 in	Shaft Diameter	1.875 in
Shaft Extension	4.62 in	Assembly/Box Mounting	F1/F2 CAPABLE
Connection Drawing	A-EE7358-LN	Outline Drawing	B-SS207470LN-1325



NOTES:

1. CONDUIT BOX CAN BE ROTATED IN 90° STEPS.
2. CONDUIT BOX CAN BE MOUNTED ON OPPOSITE SIDE BY REMOVING BRACKETS AND TURNING FRAME 180°.
3. NAMEPLATE TO BE READ FROM CONDUIT BOX SIDE OF MOTOR.

DASH	FRAME	B	C	2F	BS		
1325	284T	12.63	24.94	9.50	5.50		32-17-1000
1512	286T	14.50	26.81	11.00	6.44		

					TOLERANCES UNLESS SPECIFIED			DRAWN B/W 3/20/2000		
					DEC.	INCHES		CHK ML 3/21/2000		
					.X	±.1		APPD TB 3/21/2000		
				.XX	±.03	TITLE OUTLINE 280 FR. — TS — DR.PR. — CAST IRON		SCALE 7=32		
2	ADDED SCREENS TO BRACKETS MU80368	TJW 6/26/2007	MSG.XXX	±.005				REF		
1	NEW DRAWING	BJW 3/21/2000	.XXXX	±.0005	MAT'L			FIMF		
NO.	REVISION	BY & DATE	CHK ANG	±7°30"	FINISH			PREV		
THIS DRAWING IN DESIGN AND DETAIL IS OUR PROPERTY AND MUST NOT BE USED EXCEPT IN CONNECTION WITH OUR WORK. ALL RIGHTS OF DESIGN AND INVENTION ARE RESERVED. THIS IS AN ELECTRONICALLY GENERATED DOCUMENT - NO NOT SCALE THIS PLOT!					RFP	CAD FILE SS207470L.N	SIZE B	DRAWING NO. SS207470L.N	PAGE 1 OF 1	REV. 2
					DIST LB					

ERROR: syntaxerror
OFFENDING COMMAND: --nostringval--

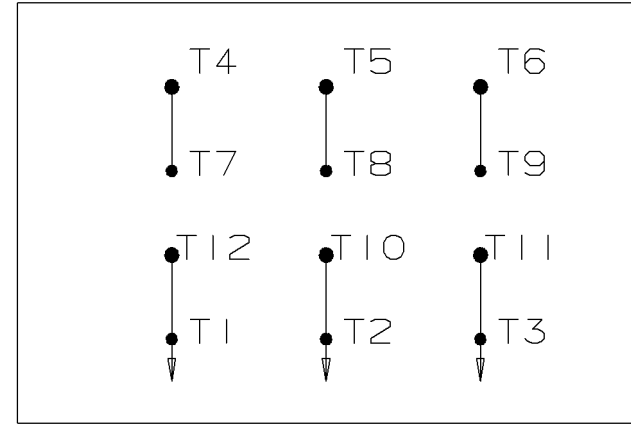
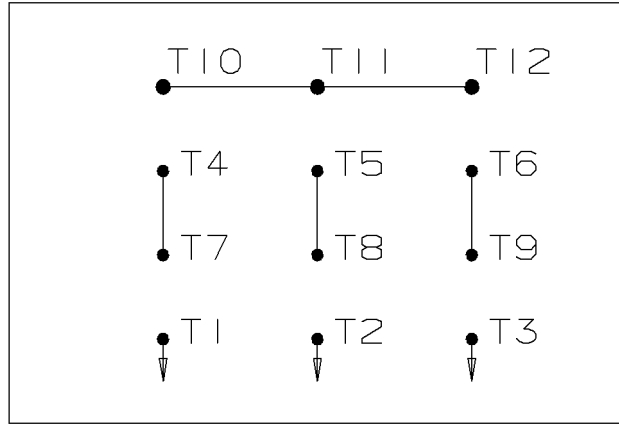
STACK:

/p2e
-savelevel-

WYE START

HIGH VOLTAGE

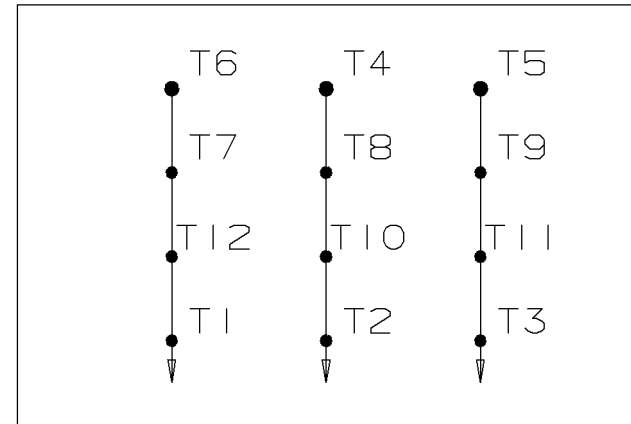
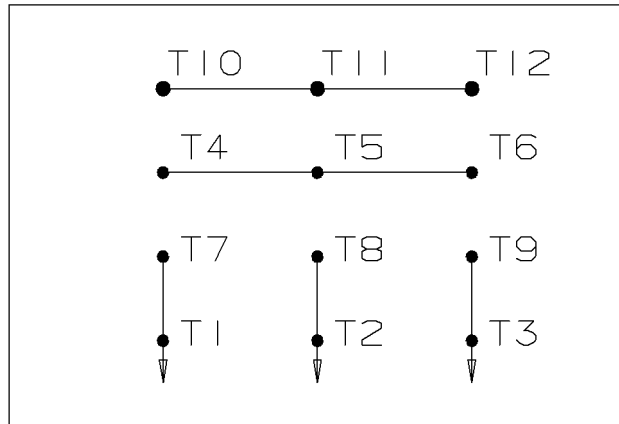
DELTA RUN



WYE START

LOW VOLTAGE

DELTA RUN



4/2 CKTY Δ

				✓ UNLESS OTHERWISE SPECIFIED DIMENSIONS ARE IN INCHES TOL. ON XX±.02 XXX±.005 XXXX±.0005 ANGLES± 7°30"	
				MAX. SURFACE ROUGHNESS UNLESS OTHERWISE NOTED	DRAWN BY DRS 12-07-1999
				FINISH	CHKD BY ML 12-07-1999
				MATERIAL	APPD BY TB 12-07-1999
1	12-07-1999	NEW DRAWING	DRS	PART NAME CONNECTION DIAGRAM	
REV	DATE	CHANGE	NAME	DRWG NO A- EE7358-LN	
				PURCHASED	CADD FILE NO. EE7358-LN



CERTIFICATION DATA SHEET

2100 WASHINGTON ST.
GRAFTON, WI
PH. 262-277-8810

CONN. DIAGRAM: A-EE7358-LN

CATALOG #: LM29576

OUTLINE: B-SS207470LN-1325

WINDING #: K2844143 6

MOUNTING: F1/F2 CAPABLE

TYPICAL MOTOR PERFORMANCE DATA

HP	kW	SYNC. RPM	F.L. RPM	FRAME	ENCLOSURE	KVA CODE	DESIGN
25&25	18.7&18.7	1800	1775&1470	284T	DP	G	B

PH	Hz	VOLTS	AMPS	START TYPE	DUTY	INSL	S.F.	AMB°C
3	60/50	230/460&200/400	64/32&74/37	WYE START DELTA RUN	CONTINUOUS	F3	1.25/1.15	40

FULL LOAD EFF:	93.6&92.4	3/4 LOAD EFF:	93.6	1/2 LOAD EFF:	92.4	GTD. EFF	ELEC. TYPE
FULL LOAD PF:	78&79	3/4 LOAD PF:	72	1/2 LOAD PF:	60	91.7	SQ CAGE IND RUN

F.L. TORQUE	LOCKED ROTOR AMPS	L.R. TORQUE	B.D. TORQUE	F.L. RISE°C
74 LB-FT	364 / 182	145 LB-FT 196 %	212 LB-FT 286 %	45

SOUND PRESSURE @ 3 FT.	SOUND POWER	ROTOR WK^2	MAX. WK^2	SAFE STALL TIME	STARTS / HOUR	APPROX. MOTOR WGT
72 dBA	82 dBA	3.9 LB-FT^2	- LB-FT^2	20 SEC.	-	390 LBS.

*** SUPPLEMENTAL INFORMATION ***

DE BRACKET TYPE	ODE BRACKET TYPE	MOUNT TYPE	ORIENTATION	SEVERE DUTY	HAZARDOUS LOCATION	DRIP COVER	SCREENS	PAINT
STANDARD	STANDARD	RIGID	HORIZONTAL	FALSE	NONE	FALSE	RODENT	GRAY - LINCOLN

BEARINGS		GREASE	SHAFT TYPE	SPECIAL DE	SPECIAL ODE	SHAFT MATERIAL	FRAME MATERIAL
DE	ODE						
BALL	BALL						
6311	6210	POLYREX EM	T	NONE	NONE	1045 HOT ROLLED (C-204)	CAST IRON

THERMO-PROTECTORS				THERMISTORS	CONTROL	SPACE HEATERS
THERMOSTATS	PROTECTORS	WDG RTDs	BRG RTDs			
NONE	NOT	NONE	NONE	NONE	FALSE	NONE VOLTS

*

N

O

T

E

S

*

INVERTER TORQUE: NONE
INV. HP SPEED RANGE: NONE
ENCODER: NONE
NONE NONE
NONE NONE PPR
BRAKE: NONE NONE
NONE P/N NONE
NONE NONE
NONE FT-LB NONE V NONE Hz

Data Sheet

Date: 1/29/2018

LM29576



Data @ 460 V

Motor Load Data

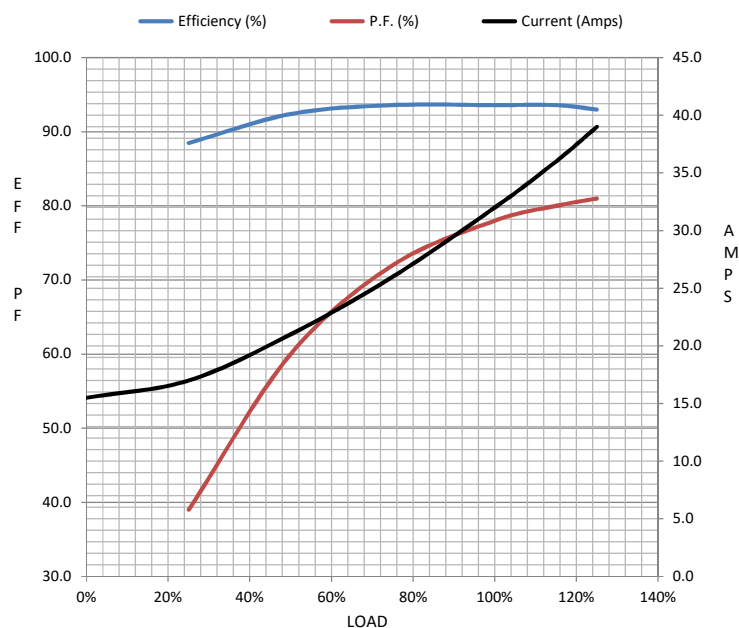
Load	0%	25%	50%	75%	100%	115%	125%	LR	
Current (Amps)	15.5	17.0	21.0	26.0	32.0	36.0	39.0	182	
Torque (ft-lb)	0.00	18.5	37.0	55.5	74.0	85.0	93.0	145	
RPM	1800	1795	1788	1782	1775	1770	1765	0	
Efficiency (%)		88.5	92.4	93.6	93.6	93.6	93.0		
P.F. (%)	4.5	39.0	60.0	72.0	78.0	80.0	81.0	32.0	

Motor Speed Data

	LR	Pull-Up	BD	Rated	Idle
Speed (RPM)	0	900	1650	1775	1800
Current (Amps)	182	150	120	32.0	15.5
Torque (ft-lb)	145	135	212	74.0	0.00

Information Block

HP	25.0			
Sync. RPM	1800			
Frame	284			
Enclosure	DP			
Construction	TDN			
Voltage	230/460#200/400	V		
Frequency	60	Hz		
Design	B			
LR Code letter	G			
Service Factor	1.15			
Temp Rise @ FL	45	° C		
Duty	CONT			
Ambient	40	° C		
Elevation	1,000	feet		
Rotor/Shaft wk²	3.9	Lb-Ft²		
Ref Wdg	K2844143	NONE		
Sound Pressure @ 1M	72	dBA		
VFD Rating	NONE			
Outline Dwg	B-SS207470LN-1325			
Conn. Diag	A-EE7358-LN			
Additional Specifications:				
0				
0				
EQUIV CKT (OHMS / PHASE)				
R1	R2	X1	X2	Xm
0.1540	0.1220	0.8090	0.9800	16.5300



Speed - Torque Curve

