

# PRODUCT INFORMATION PACKET



Model No: LM28909  
Catalog No: LM28909

Elevator Duty Motor, 60 & 75 HP, 3 Ph, 60 & 60 Hz, 200 & 200 V, 1800 & 1800 RPM, 364T Frame, DP



Regal and Leeson are trademarks of Regal Rexnord Corporation or one of its affiliated companies.  
©2023 Regal Rexnord Corporation, All Rights Reserved. MC017097E



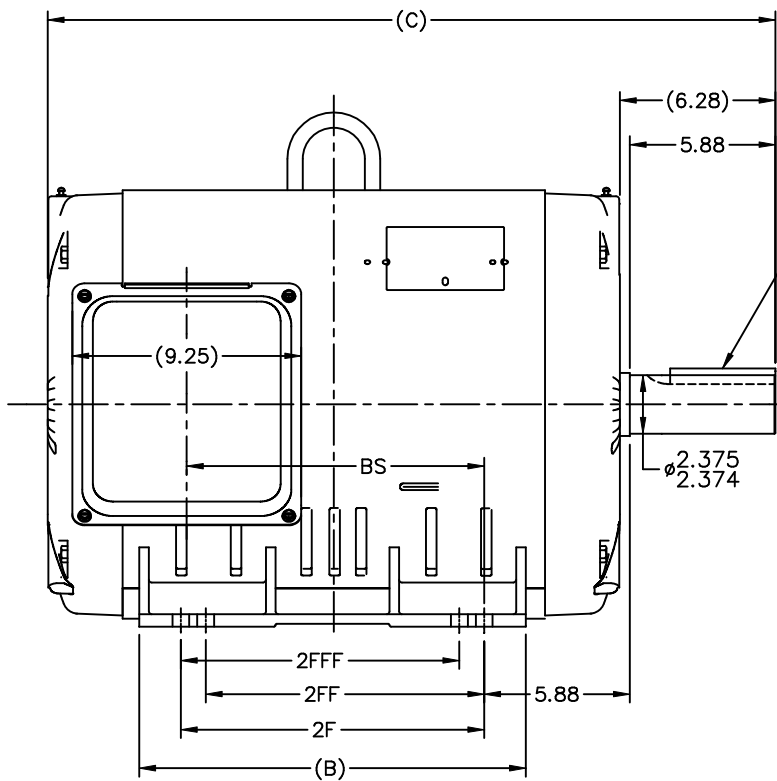


### Nameplate Specifications

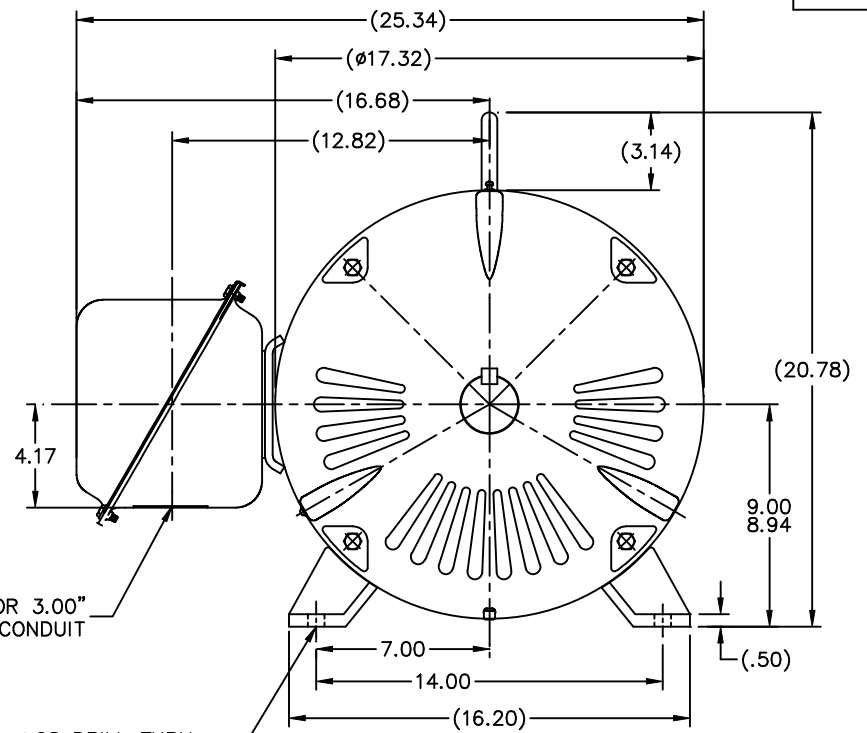
Phase	3	Output HP	60 & 75 Hp
Output KW	45.0 & 56.0 kW	Voltage	200 & 200 V
Speed	1785 & 1785 rpm	Service Factor	1.0 & 1.0
Frame	364T	Enclosure	Drip Proof
Thermal Protection	No Protection	Efficiency	95 & 94.5 %
Ambient Temperature	40 °C	Frequency	60 & 60 Hz
Current	167 & 206 A	Power Factor	82
Duty	120/80 Starts/Hour	Insulation Class	F
Design Code	INV	KVA Code	F
Drive End Bearing Size	313	Opp Drive End Bearing Size	311
UL	Recognized	CSA	Y
CE	Y	IP Code	22
Number of Speeds	1		

### Technical Specifications

Electrical Type	Squirrel Cage Induction Run	Starting Method	Wye Start Delta Run
Poles	4	Rotation	Reversible
Resistance Main	.106 Ohms	Mounting	Rigid Base
Motor Orientation	Horizontal	Drive End Bearing	Ball
Opp Drive End Bearing	Ball	Frame Material	Rolled Steel
Shaft Type	T	Overall Length	28.40 in
Frame Length	15.48 in	Shaft Diameter	2.375 in
Shaft Extension	5.88 in	Assembly/Box Mounting	F1/F2 CAPABLE
Outline Drawing	XH2D1SS1-1548	Connection Drawing	A-EE7340-LN

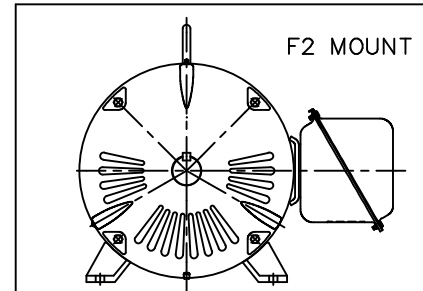


.62x.62x4.25  
KEY



HOLE FOR 3.00"  
CONDUIT

Ø.68 DRILL THRU  
364 - 2 HOLES EACH SIDE  
365 - 4 HOLES EACH SIDE



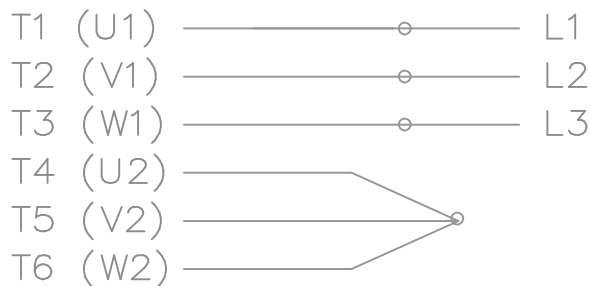
NOTES:  
1. NAMEPLATES TO BE READ FROM CONDUIT BOX  
SIDE OF MOTOR.

DASH	FRAME	C	B	2F	2FF	2FFF	BS
1548	364T	28.40	14.61	11.25	<del>11.25</del>	<del>11.25</del>	11.02
1648	365T	29.40	15.61	12.25	11.25	11.25	12.02

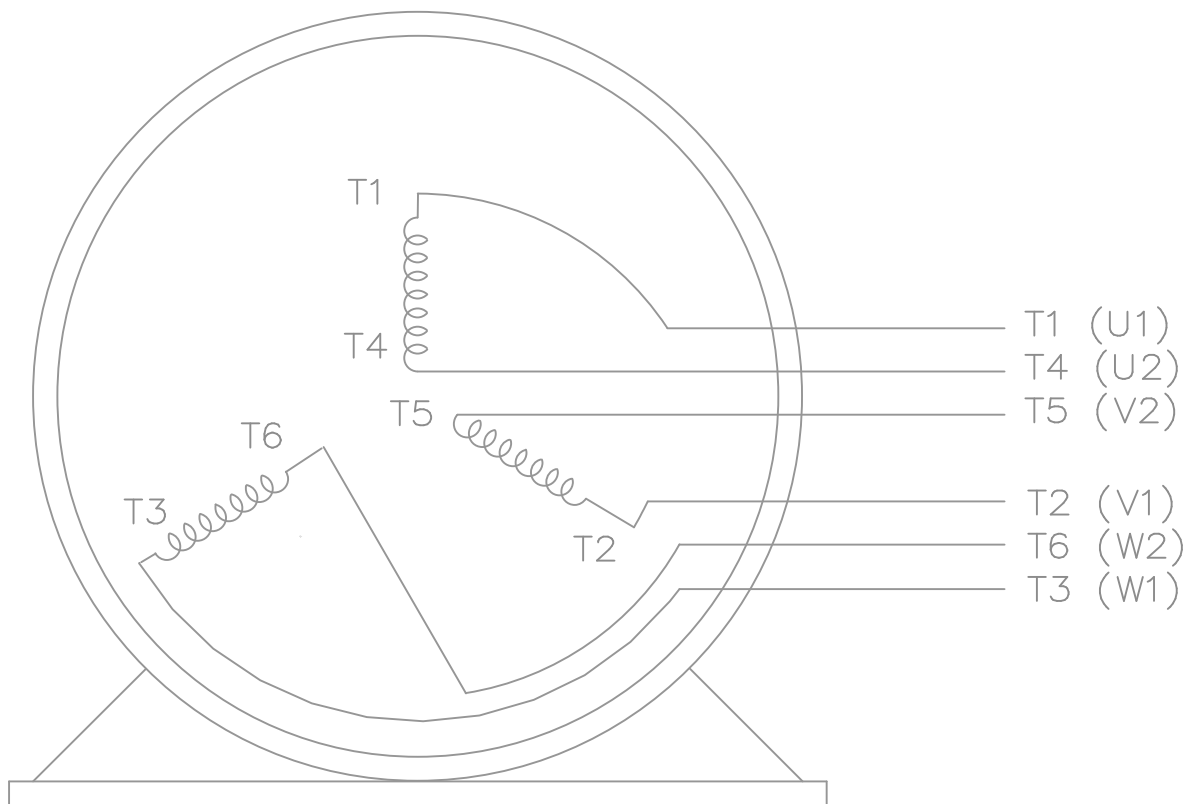
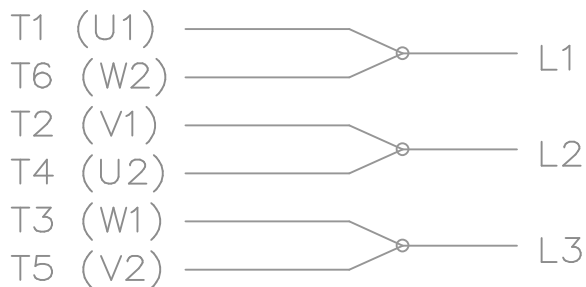
		TOLERANCES UNLESS SPECIFIED		Lincoln ROTOR		DRAWN TJB 08-07-2001	
		DEC.	INCHES	CHK	DRS	09-04-2001	
		.X	±.1	APPD		HNH 09-04-2001	
2	ADDED DASH 1548, REVISED PART NAME; U.E.I. WAS U.E. CN34267	.XX	±.03	TITLE		OUTLINE NEMA MOTORS	
		.XXX	±.005	360T FRAME OPD UEI		SCALE 1=5	
1	NEW DRAWING MU37565	.XXXX	±.0005	MAT'L		REF	
NO.	REVISION	BY & DATE	CHK	ANG	FINISH	PREV	
			RFP	09-04-2001	CAD FILE xh2d1ss1	SIZE	DRAWING NO. PAGE 1 OF 1 REV.
THIS DRAWING IN DESIGN AND DETAIL IS OUR PROPERTY AND MUST NOT BE USED EXCEPT IN CONNECTION WITH OUR WORK ALL RIGHTS OF DESIGN AND INVENTION ARE RESERVED THIS IS AN ELECTRONICALLY GENERATED DOCUMENT - DO NOT SCALE THIS PRINT						B	XH2D1SS1 2

THREE PHASE – Y START  
Δ RUN MOTOR

START




RUN



VIEW OF TERMINAL END

NOTE:  
IEC LEAD MARKINGS ARE NOTED  
IN PARENTHESES

T6CK  
T6BM  
T4CC  
T2DL  
T4C

				TOLERANCES UNLESS SPECIFIED			DRAWN BLR 10-04-1999		
				DEC.	INCHES		CHK DRS 10-04-1999		
				.X	±.1		APPD TB 10-04-1999		
3	REVISED TO MATCH M.E. ORIGINAL	TAT 07-25-2005	ML	.XX	±.02	TITLE CONNECTION DIAGRAM 3Ø – WYE START DELTA RUN	SCALE 1=1		
2	REVISED DRAWING MISTAKE CN 29200-2980	ERH 05-15-2003	ML	.XXX	±.005		REF		
1	NEW DRAWING	BLR 10-09-1999		.XXXX	±.0005		FMF		
NO.	REVISION	BY & DATE	CHK	ANG	±7'30"	FINISH	PREV		
THIS DRAWING IN DESIGN AND DETAIL IS OUR PROPERTY AND MUST NOT BE USED EXCEPT IN CONNECTION WITH OUR WORK ALL RIGHTS OF DESIGN AND INVENTION ARE RESERVED THIS IS AN ELECTRONICALLY GENERATED DOCUMENT – DO NOT SCALE THIS PRINT				RFP	CAD FILE ee7340_In		SIZE	DRAWING NO. PAGE OF	REV.
				DIST	WA-LB-SB		A	EE7340-LN	3

Data Sheet

Date: 1/30/2018

LM28909



Data @ **200 V**

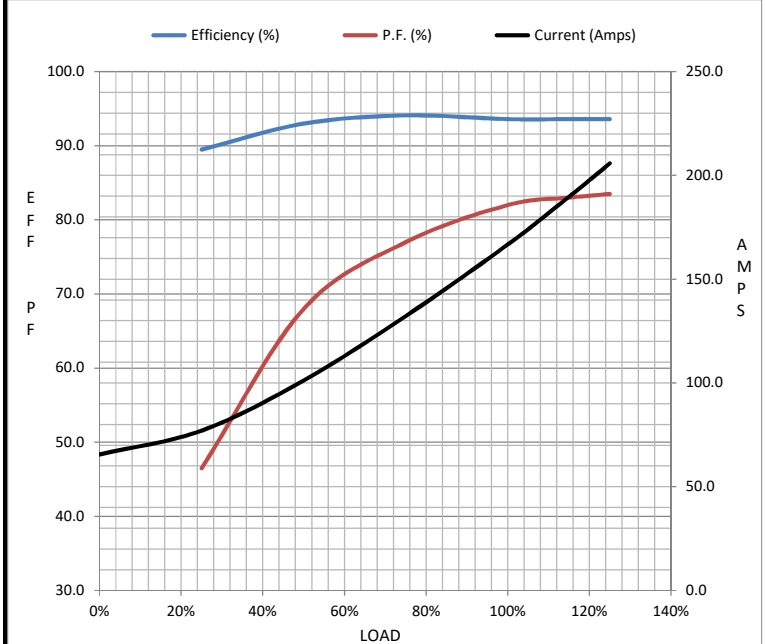
Motor Load Data

Load	0%	25%	50%	75%	100%	115%	125%	LR
Current (Amps)	65.6	77.1	101	132	167	190	206	1,001
Torque (ft-lb)	0.00	44.0	88.0	132	177	203	221	325
RPM	1800	1795	1792	1788	1785	1,782	1780	0
Efficiency (%)		89.5	93.0	94.1	93.6	93.6	93.6	
P.F. (%)	5.0	46.5	68.0	77.0	82.0	83.0	83.5	34.0

Motor Speed Data

	LR	Pull-Up	BD	Rated	Idle
Speed (RPM)	0	900	1700	1785	1800
Current (Amps)	1,001	897	644	167	65.6
Torque (ft-lb)	325	290	450	177	0.00

Information Block				
HP	60.0			
Sync. RPM	1800			
Frame	364			
Enclosure	DP			
Construction	TDR			
Voltage	200#200 V			
Frequency	60 Hz			
Design	B			
LR Code letter	G			
Service Factor	1.15			
Temp Rise @ FL	65 °C			
Duty	60 MIN			
Ambient	40 °C			
Elevation	1,000 feet			
Rotor/Shaft wk <sup>2</sup>	0.00 Lb-Ft <sup>2</sup>			
Ref Wdg	C3644009 R2			
Sound Pressure @ 1M	76 dBA			
VFD Rating	NONE			
Outline Dwg	XH2D1SS1-1548			
Conn. Diag	A-EE7340-LN			
Additional Specifications:				
0				
0				
EQUIV CKT (OHMS / PHASE)				
R1	R2	X1	X2	Xm
0.0130	0.0060	0.0690	0.0970	1.7440



Speed - Torque Curve

