

# PRODUCT INFORMATION PACKET

Model No: LM28220

Catalog No: LM28220

Elevator Duty Motor, 30 HP, 3 Ph, 60 Hz, 200 V, 1200 RPM, 326TC Frame, DP



Regal and are trademarks of Regal Rexnord Corporation or one of its affiliated companies.  
©2022 Regal Rexnord Corporation, All Rights Reserved. MC017097E

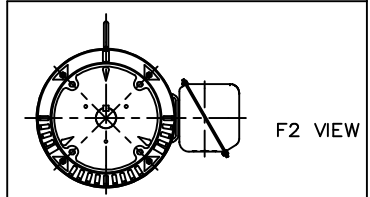
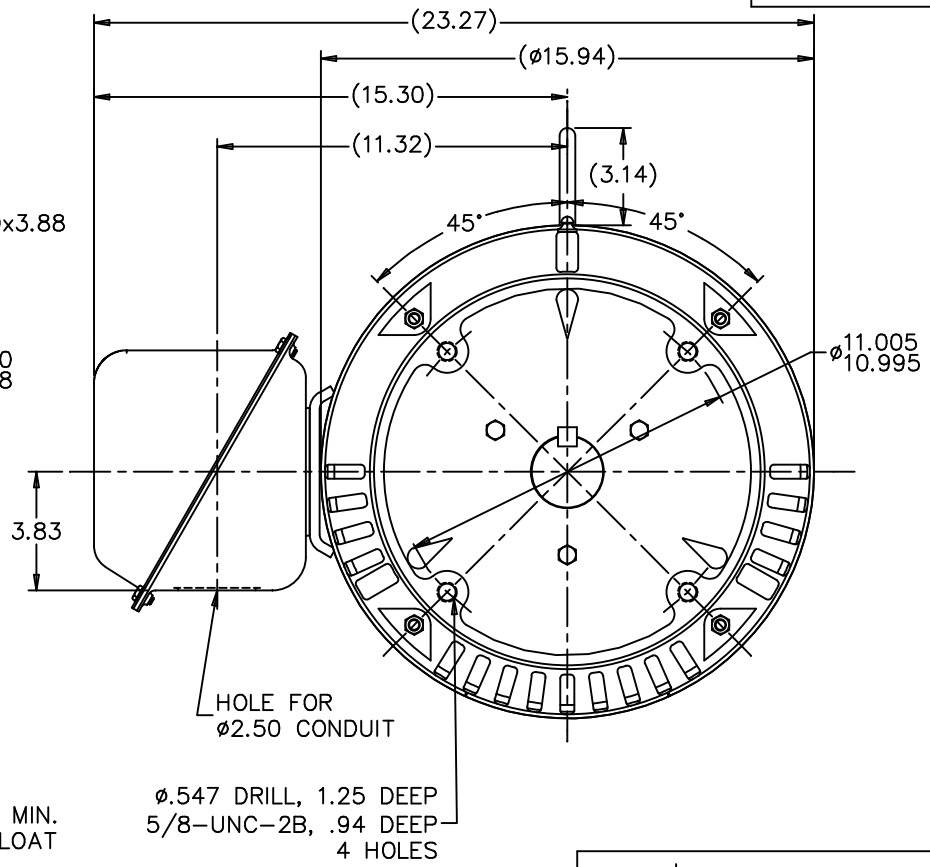
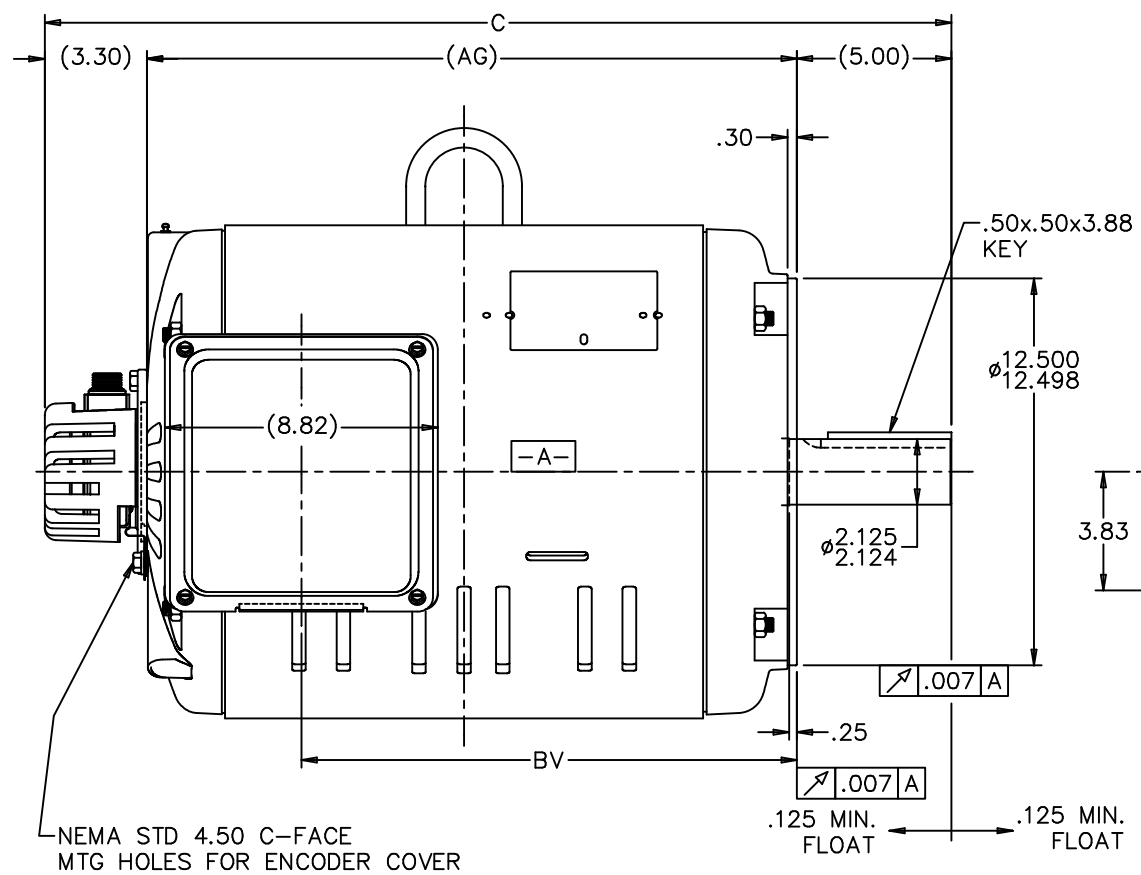
### Nameplate Specifications

Output HP	<b>30 Hp</b>	Output KW	<b>22.4 kW</b>
Frequency	<b>60 Hz</b>	Voltage	<b>200 V</b>
Current	<b>87.5 A</b>	Speed	<b>1185 rpm</b>
Service Factor	<b>1</b>	Phase	<b>3</b>
Efficiency	<b>90.2 %</b>	Power Factor	<b>82</b>
Duty	<b>Elevator</b>	Insulation Class	<b>F</b>
Design Code	<b>INV</b>	KVA Code	<b>K</b>
Frame	<b>326TC</b>	Enclosure	<b>Drip Proof</b>
Thermal Protection	<b>No Protection</b>	Ambient Temperature	<b>40 °C</b>
Drive End Bearing Size	<b>311</b>	Opp Drive End Bearing Size	<b>309</b>
UL	<b>Recognized</b>	CSA	<b>Y</b>
CE	<b>Y</b>	IP Code	<b>22</b>
Number of Speeds	<b>1</b>		

### Technical Specifications

Electrical Type	<b>Squirrel Cage Inverter Duty</b>	Starting Method	<b>Wye Start Delta Run Or Inverter</b>
Poles	<b>6</b>	Rotation	<b>Reversible</b>
Resistance Main	<b>.185 Ohms</b>	Mounting	<b>Round</b>
Motor Orientation	<b>Horizontal</b>	Drive End Bearing	<b>Ball</b>
Opp Drive End Bearing	<b>Ball</b>	Frame Material	<b>Rolled Steel</b>
Shaft Type	<b>T</b>	Overall Length	<b>30.80 in</b>
Frame Length	<b>16.57 in</b>	Shaft Diameter	<b>2.125 in</b>
Shaft Extension	<b>5 in</b>	Assembly/Box Mounting	<b>F1/F2 CAPABLE</b>
Connection Drawing	<b>A-EE7340D-LN</b>	Outline Drawing	<b>XG3D1EC33B-1657</b>

This is an uncontrolled document once printed or downloaded and is subject to change without notice. Date Created:09/07/2022

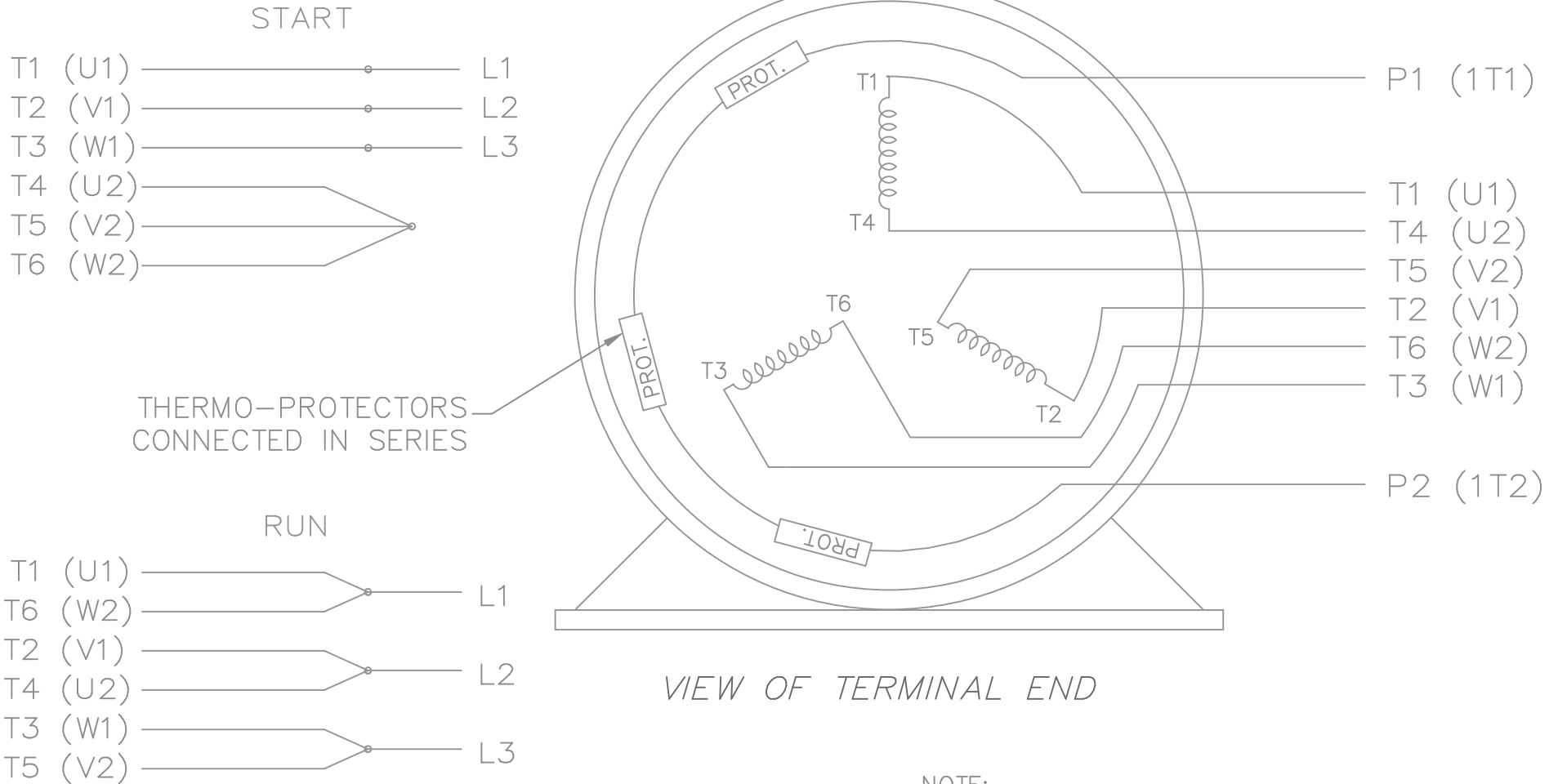


NOTES:  
 1. CONDUIT BOX CAN BE ROTATED IN 90° STEPS.  
 2. NAMEPLATES TO BE READ FROM CONDUIT BOX SIDE OF MOTOR.

DASH	FRAME	C	AG	BV
1507	324TC	29.30	21.01	16.02
1657	326TC	30.80	22.01	17.52

				TOLERANCES UNLESS SPECIFIED		Lincoln MOTOR		DRAWN CTO 06-04-2002	
				DEC.	INCHES			CHK	ML
				.X	±.1			APPD	HNH
				.XX	±.03	TITLE OUTLINE ( NO FEET)		SCALE 1=4	
				.XXX	±.005	VVVF ELEVATOR HOIST MOTOR 320 ODP UE		REF	
1	NEW DRAWING	MU41749	CTO 06-12-2002	HNH	.XXXX	±.0005	MATL	FMF	
NO.	REVISION		BY & DATE	CHK	ANG	±7'30"	FINISH	PREV	
THIS DRAWING IN DESIGN AND DETAIL IS OUR PROPERTY AND MUST NOT BE USED EXCEPT IN CONNECTION WITH OUR WORK ALL RIGHTS OF DESIGN AND INVENTION ARE RESERVED THIS IS AN ELECTRONICALLY GENERATED DOCUMENT - DO NOT SCALE THIS PRINT				RFP	CAD FILE xg3d1ec33b		SIZE	DRAWING NO.	PAGE OF
				DIST	BY			B	XG3D1EC33B
								1	1


THREE PHASE  
WYE START DELTA RUN



THERMO-PROTECTORS  
CONNECTED IN SERIES

VIEW OF TERMINAL END

NOTE:  
IEC LEAD MARKINGS ARE NOTED IN PARANTHESES

				TOLERANCES UNLESS SPECIFIED			DRAWN KL 11-10-2000				
				DEC.	INCHES		CHK DJK 11-10-2000				
				.X	±.1		APPD DJK 11-10-2000				
				.XX	±.02		SCALE 1=1				
2	ADDED IEC LEAD MARKINGS	MSG 10-08-2008	ML	.XXX	±.005	TITLE CONNECTION DIAGRAM - EXTERNAL - 3ø WYE START DELTA RUN - SINGLE VOLTAGE		REF			
1	NEW DRAWING MU34618	KL 11-10-2000	DJK	.XXXX	±.0005	MAT'L.		FMF			
NO.	REVISION	BY & DATE	CHK	ANG	±7'30"	FINISH		PREV			
THIS DRAWING IN DESIGN AND DETAIL IS OUR PROPERTY AND MUST NOT BE USED EXCEPT IN CONNECTION WITH OUR WORK ALL RIGHTS OF DESIGN AND INVENTION ARE RESERVED THIS IS AN ELECTRONICALLY GENERATED DOCUMENT - DO NOT SCALE THIS PRINT				RFP	11-10-2000	CAD FILE EE7340D_LN		SIZE A	DRAWING NO. EE7340D_LN	PAGE OF 2	REV. 2

