

PRODUCT INFORMATION PACKET

Model No: LM28216

Catalog No: LM28216

Elevator Duty Motor, 25 HP, 3 Ph, 60 Hz, 230/460 V, 1200 RPM, 324TC Frame, DP



Regal and are trademarks of Regal Rexnord Corporation or one of its affiliated companies.
©2022 Regal Rexnord Corporation, All Rights Reserved. MC017097E

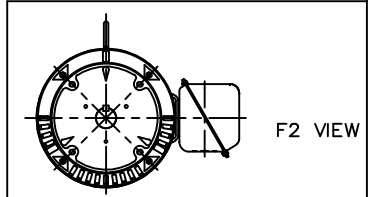
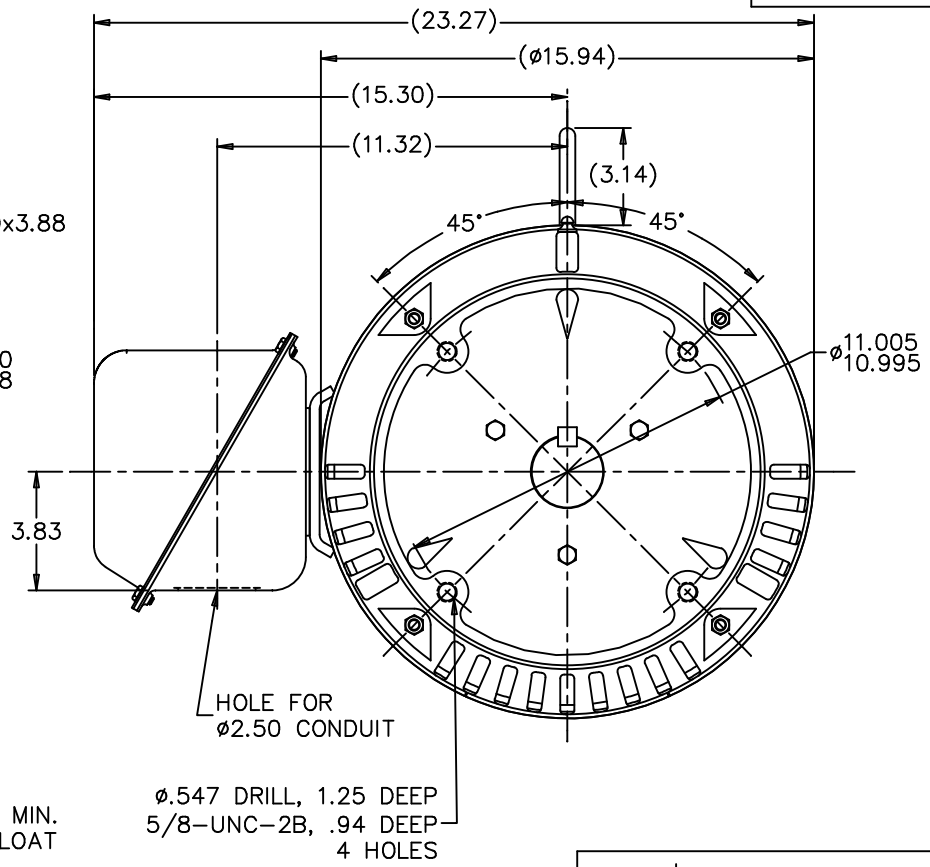
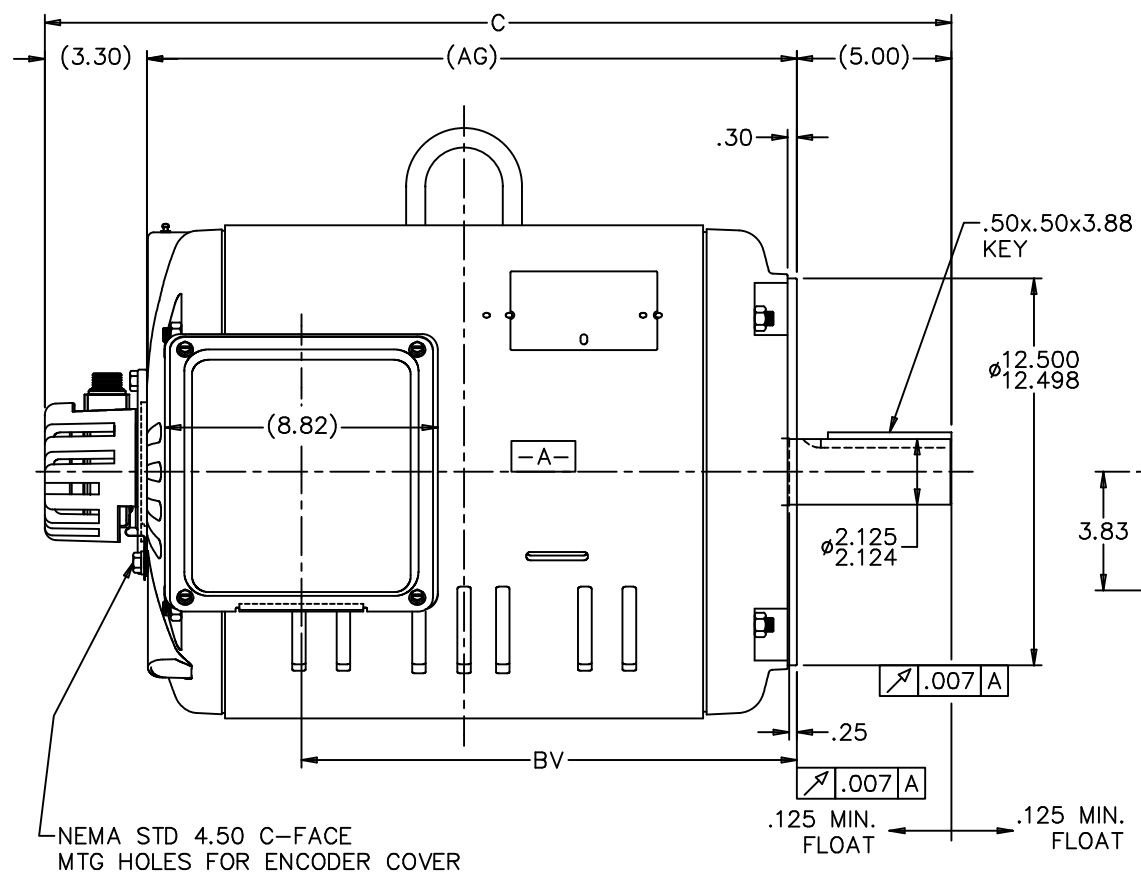
Nameplate Specifications

Output HP	25 Hp	Output KW	18.7 kW
Frequency	60 Hz	Voltage	230/460 V
Current	64.0/32.0 A	Speed	1185 rpm
Service Factor	1	Phase	3
Efficiency	91 %	Power Factor	80
Duty	Elevator	Insulation Class	F
Design Code	INV	KVA Code	K
Frame	324TC	Enclosure	Drip Proof
Thermal Protection	No Protection	Ambient Temperature	40 °C
Drive End Bearing Size	311	Opp Drive End Bearing Size	309
UL	Recognized	CSA	Y
CE	Y	IP Code	22
Number of Speeds	1		

Technical Specifications

Electrical Type	Squirrel Cage Inverter Duty	Starting Method	Wye Start Delta Run Or Inverter
Poles	6	Rotation	Reversible
Resistance Main	.22 Ohms	Mounting	Round
Motor Orientation	Horizontal	Drive End Bearing	Ball
Opp Drive End Bearing	Ball	Frame Material	Rolled Steel
Shaft Type	T	Overall Length	29.30 in
Frame Length	15.07 in	Shaft Diameter	2.125 in
Shaft Extension	5.25 in	Assembly/Box Mounting	F1/F2 CAPABLE
Outline Drawing	XG3D1EC33B-1507	Connection Drawing	A-EE7358-LN

This is an uncontrolled document once printed or downloaded and is subject to change without notice. Date Created:09/07/2022



NOTES:
 1. CONDUIT BOX CAN BE ROTATED IN 90° STEPS.
 2. NAMEPLATES TO BE READ FROM CONDUIT BOX SIDE OF MOTOR.

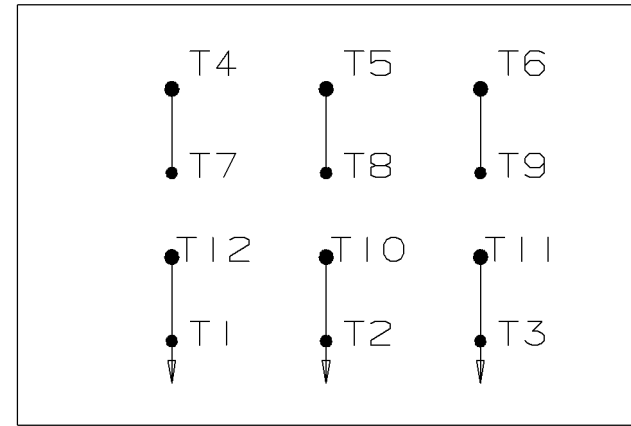
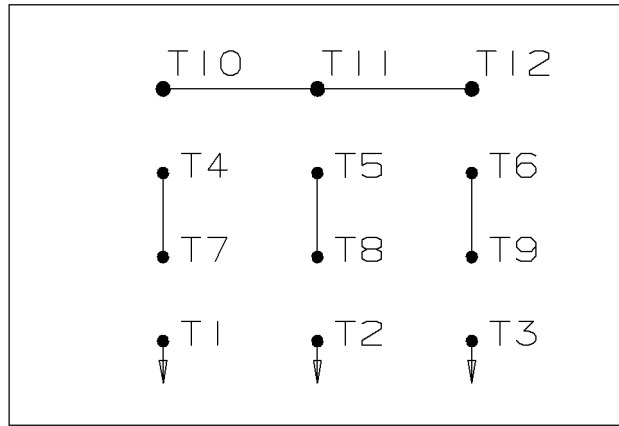
DASH	FRAME	C	AG	BV
1507	324TC	29.30	21.01	16.02
1657	326TC	30.80	22.01	17.52

				TOLERANCES UNLESS SPECIFIED		Lincoln MOTOR		DRAWN CTO 06-04-2002	
				DEC.	INCHES			CHK	ML
				.X	±.1			APPD	HNH
				.XX	±.03	TITLE OUTLINE (NO FEET)		SCALE	1=4
				.XXX	±.005	VVVF ELEVATOR HOIST MOTOR 320 ODP UE		REF	
1	NEW DRAWING	MU41749	CTO 06-12-2002	HNH	.XXXX	±.0005	MAT'L	FMF	
NO.	REVISION		BY & DATE	CHK	ANG	±7'30"	FINISH	PREV	
THIS DRAWING IN DESIGN AND DETAIL IS OUR PROPERTY AND MUST NOT BE USED EXCEPT IN CONNECTION WITH OUR WORK ALL RIGHTS OF DESIGN AND INVENTION ARE RESERVED THIS IS AN ELECTRONICALLY GENERATED DOCUMENT - DO NOT SCALE THIS PRINT				RFP	CAD FILE xg3d1ec33b			SIZE	DRAWING NO. PAGE OF REV.
				DIST	BY			B	XG3D1EC33B 1

WYE START

HIGH VOLTAGE

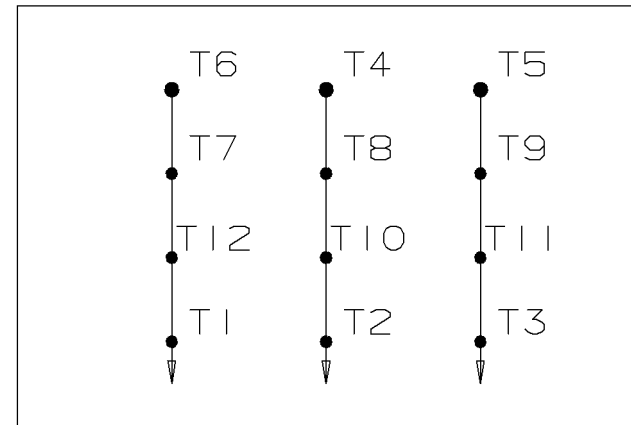
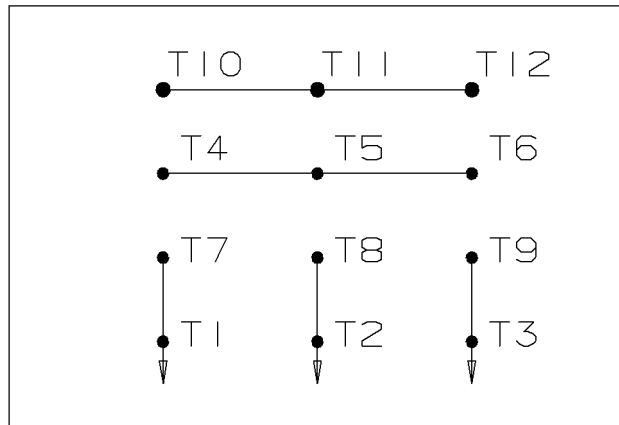
DELTA RUN



WYE START

LOW VOLTAGE

DELTA RUN



4/2 CKTY Δ

					<input checked="" type="checkbox"/> UNLESS OTHERWISE SPECIFIED DIMENSIONS ARE IN INCHES TOL. ON XX± .02 XXX± .005 XXXX± .0005 ANGLES± 7'30"			
						MAX. SURFACE ROUGHNESS UNLESS OTHERWISE NOTED FINISH MATERIAL	DRAWN BY DRS CHKD BY ML APPD BY TB	12-07-1999 12-07-1999 12-07-1999
1	12-07-1999	NEW DRAWING	DRS	PART NAME CONNECTION DIAGRAM			DRWG NO A- EE7358-LN	
REV	DATE	CHANGE	NAME	PURCHASED			CADD FILE NO. EE7358-LN	



2100 WASHINGTON ST.
GRAFTON, WI
PH. 262-277-8810

CERTIFICATION DATA SHEET

CONN. DIAGRAM: A-EE7358-LN
OUTLINE: XG3D1EC33B-1507
WINDING #: L3246016 1

CATALOG : LM28216

MOUNTING: F1/F2 CAPABLE

TYPICAL MOTOR PERFORMANCE DATA

HP	kW	SYNC. RPM	F.L. RPM	FRAME	ENCLOSURE	KVA CODE	DESIGN
25	18.7	1200	1185	324TC	DP	K	INV

PH	Hz	VOLTS	AMPS	START TYPE	DUTY	INSL	S.F.	AMB°C
3	60	230/460	64/32	Y START D RUN OR INV	ELEVATOR	F1	1.0	40

FULL LOAD EFF:	91	3/4 LOAD EFF:	90.2	1/2 LOAD EFF:	89.5	GTD. EFF		ELEC. TYPE	
FULL LOAD PF:	80	3/4 LOAD PF:	74	1/2 LOAD PF:	63	89.5		SQ CAGE INV DUTY	

F.L. TORQUE	LOCKED ROTOR AMPS	L.R. TORQUE	B.D. TORQUE	F.L. RISE°C
111 LB-FT	520 / 260	235 LB-FT 212 %	360 LB-FT 324 %	100

SOUND PRESSURE @ 3 FT.	SOUND POWER	ROTOR WK^2	MAX. WK^2	SAFE STALL TIME	STARTS / HOUR	APPROX. MOTOR WGT
69 dBA	79 dBA	0 LB-FT^2	- LB-FT^2	- SEC.	-	- LBS.

*** SUPPLEMENTAL INFORMATION ***

DE BRACKET TYPE	ODE BRACKET TYPE	MOUNT TYPE	ORIENTATION	SEVERE DUTY	HAZARDOUS LOCATION	DRIP COVER	SCREENS	PAINT
C-FACE	ENCODER	ROUND	HORIZONTAL	FALSE	NONE	FALSE	NONE	GRAY - LINCOLN

BEARINGS		GREASE	SHAFT TYPE	SPECIAL DE	SPECIAL ODE	SHAFT MATERIAL	FRAME MATERIAL
DE	ODE						
BALL	BALL	POLYREX EM	T	NONE	NONE	1045 HOT ROLLED (C-204)	ROLLED STEEL
311	309						

THERMO-PROTECTORS				THERMISTORS	CONTROL	SPACE HEATERS
THERMOSTATS	PROTECTORS	WDG RTDs	BRG RTDs			
TSTATS (N/C)	NOT	NONE	NONE	NONE	FALSE	NONE VOLTS

*
N
O
T
E
S

INVERTER TORQUE: CONSTANT 1000:1
INV. HP SPEED RANGE: NONE
ENCODER: REGAL SUPPLIED - REGAL MOUNT DYNAPAR HS35 LINCOLN MS CONNECTOR 1024 PPR
BRAKE: NONE NONE NONE P/N NONE NONE NONE NONE FT-LB NONE V NONE Hz



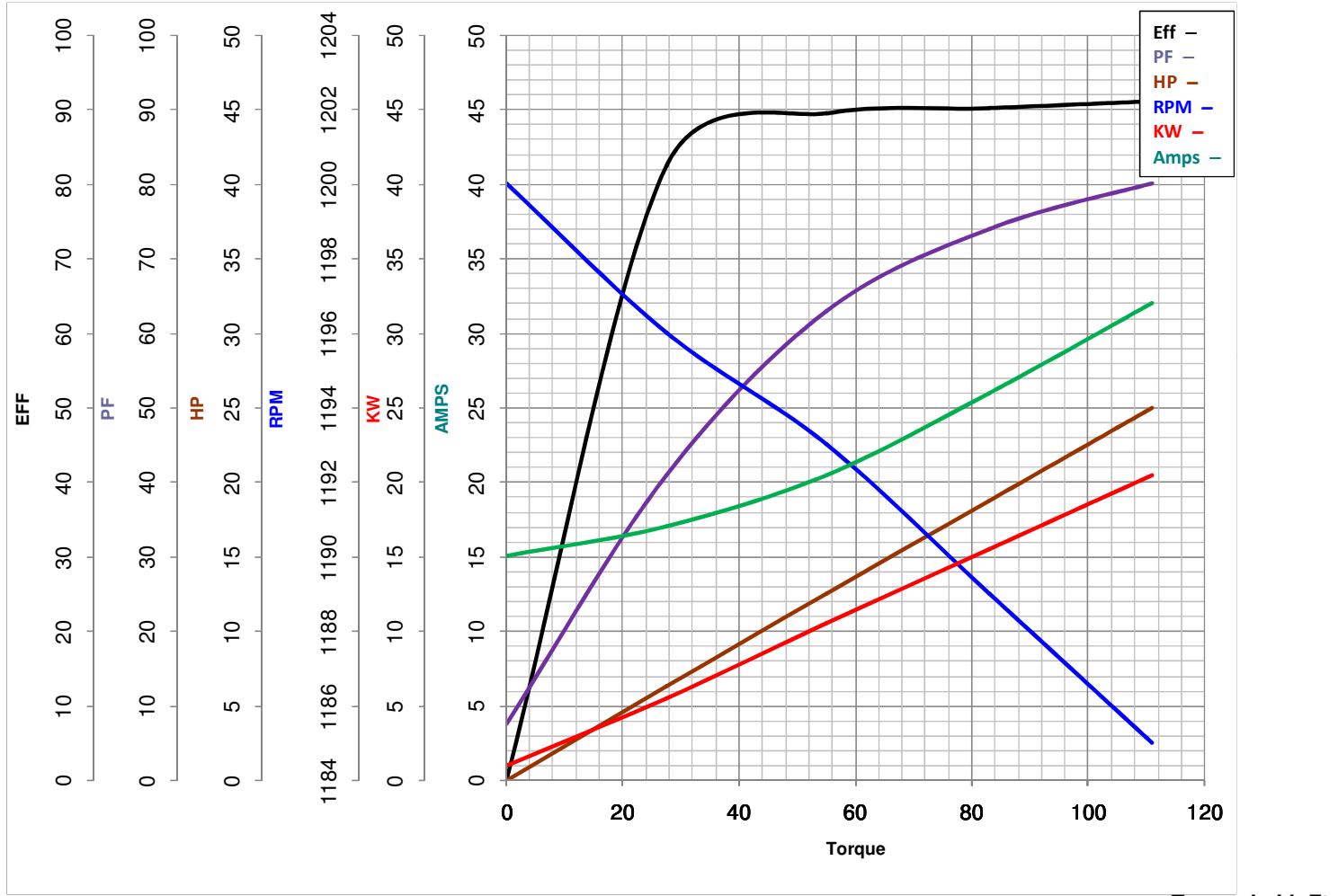
LEESON ELECTRIC CORPORATION
TYPICAL PERFORMANCE CURVE for AC MOTOR

Model No LM28216

Curve at 460 Volts HP 25.00 PHASE 3
60 HZ
25 HP VOLTS 230/460

Catalog No LM28216CC

HZ 60 RPM 1185



FL TORQUE	<u>111</u>	Lb.Ft	FL AMPS	<u>64/32</u>
BD TORQUE	<u>360.0</u>	Lb.Ft	PU TORQUE	<u>223.0</u>
LR TORQUE	<u>235</u>	Lb.Ft	LR AMPS	<u>260</u>
WINDING	<u>L3246016-1</u>		Date	<u>6/4/2018</u>