

PRODUCT INFORMATION PACKET

Model No: LM28208

Catalog No: LM28208

Elevator Duty Motor, 15 HP, 3 Ph, 60 Hz, 230/460 V, 1200 RPM, 284TC Frame, DP



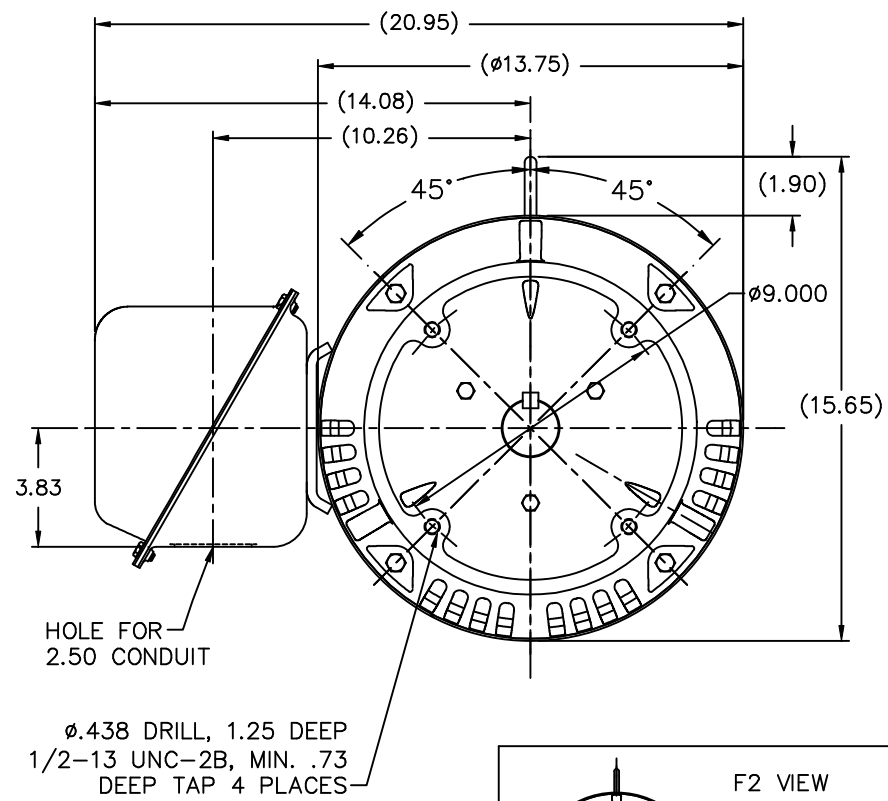
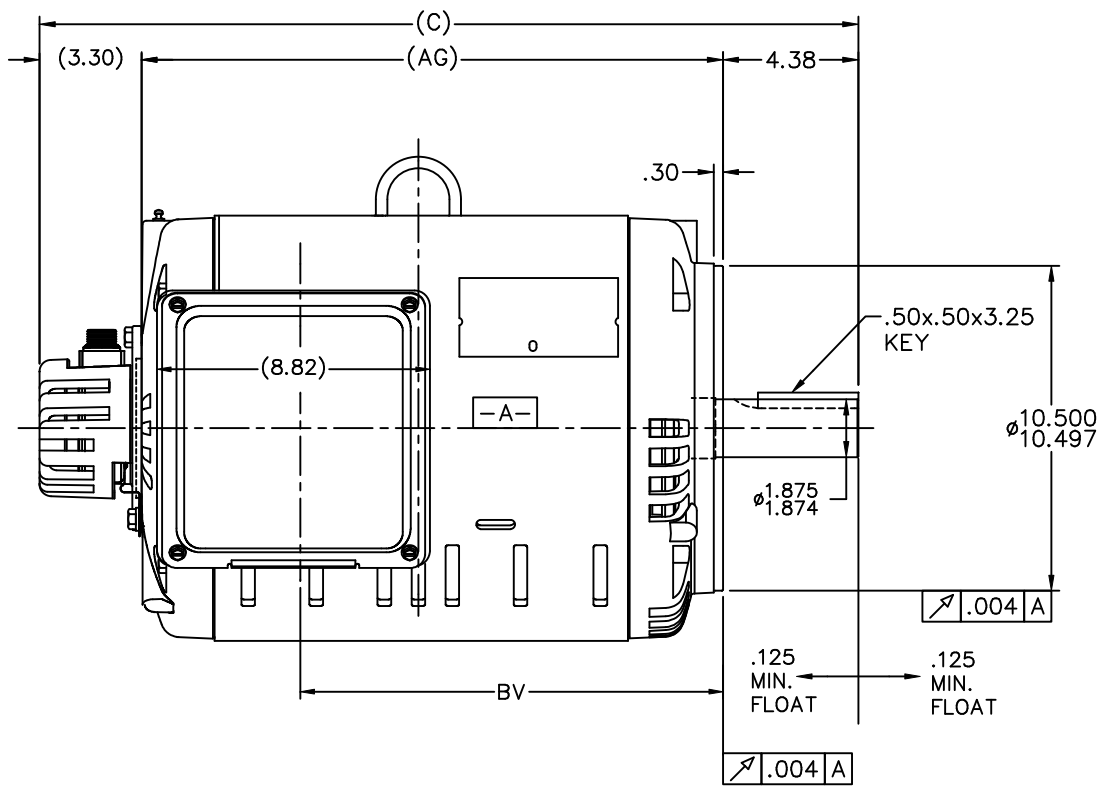
Regal and are trademarks of Regal Rexnord Corporation or one of its affiliated companies.
©2022 Regal Rexnord Corporation, All Rights Reserved. MC017097E

Nameplate Specifications

Output HP	15 Hp	Output KW	11.2 kW
Frequency	60 Hz	Voltage	230/460 V
Current	49.0/24.5 A	Speed	1182 rpm
Service Factor	1	Phase	3
Efficiency	84 %	Power Factor	68
Duty	Elevator	Insulation Class	F
Design Code	INV	KVA Code	L
Frame	284TC	Enclosure	Drip Proof
Thermal Protection	No Protection	Ambient Temperature	40 °C
Drive End Bearing Size	310	Opp Drive End Bearing Size	209
UL	Recognized	CSA	Y
CE	Y	IP Code	22
Number of Speeds	1		

Technical Specifications

Electrical Type	Squirrel Cage Inverter Duty	Starting Method	Wye Start Delta Run Or Inverter
Poles	6	Rotation	Reversible
Resistance Main	.4 Ohms	Mounting	Round
Motor Orientation	Horizontal	Drive End Bearing	Ball
Opp Drive End Bearing	Ball	Frame Material	Rolled Steel
Shaft Type	T	Overall Length	26.47 in
Frame Length	12.98 in	Shaft Diameter	1.875 in
Shaft Extension	4.62 in	Assembly/Box Mounting	F1/F2 CAPABLE
Inverter Load	CONSTANT 1000:1		
Outline Drawing	XF3D1EC33B-1298	Connection Drawing	A-EE7308BZ-LN



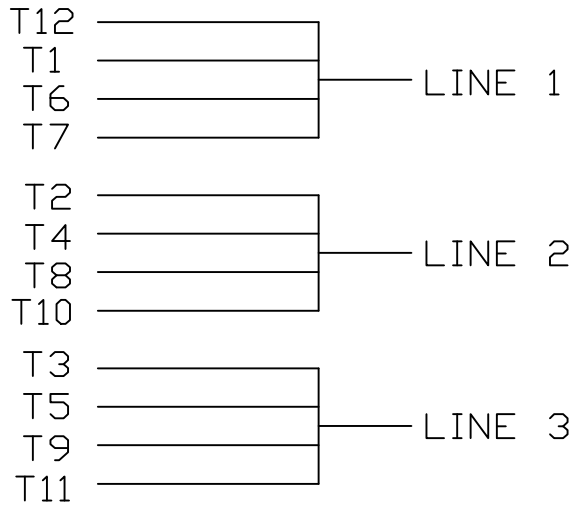
- NOTES:
1. CONDUIT BOX CAN BE ROTATED IN 90° STEPS.
 2. NAMEPLATES TO BE READ FROM CONDUIT BOX SIDE OF MOTOR.

DASH	FRAME	C	AG	BV
1298	284TC	26.47	18.79	13.66
1448	286TC	27.97	20.29	15.16

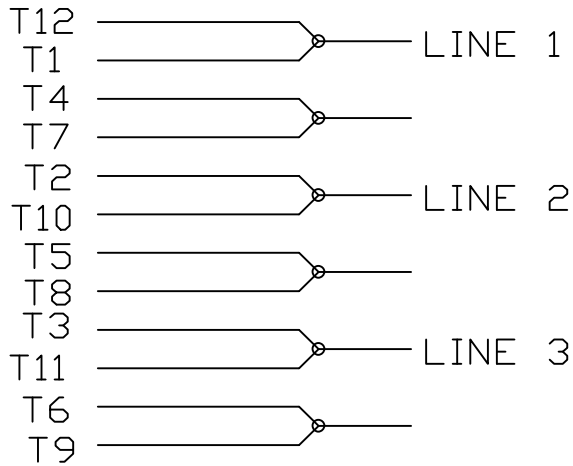
				TOLERANCES UNLESS SPECIFIED		Lincoln MOTOR		DRAWN CTO 11-20-2002	
				DEC.	INCHES			CHK	DRS 12-03-2002
				.X	±.1			APPD	HNH 12-03-2002
				.XX	±.02	TITLE OUTLINE - IH950 ENCODER		SCALE	1=4
				.XXX	±.005	VVVF ELEVATOR HOIST MOTOR 280TC ODP		REF	
1	NEW DRAWING	MU43624	CTO 12-03-2002	HNH	±.0005	MATL		FMF	
NO.	REVISION	BY & DATE	CHK	ANG	FINISH			PREV	
			RFP	±7°30'		CAD FILE xf3d1ec33b		SIZE	DRAWING NO. PAGE OF REV.
			DIST	BY		B	XF3D1EC33B		1

THIS DRAWING IN DESIGN AND DETAIL IS OUR PROPERTY AND MUST NOT BE USED EXCEPT IN CONNECTION WITH OUR WORK ALL RIGHTS OF DESIGN AND INVENTION ARE RESERVED THIS IS AN ELECTRONICALLY GENERATED DOCUMENT - DO NOT SCALE THIS PRINT

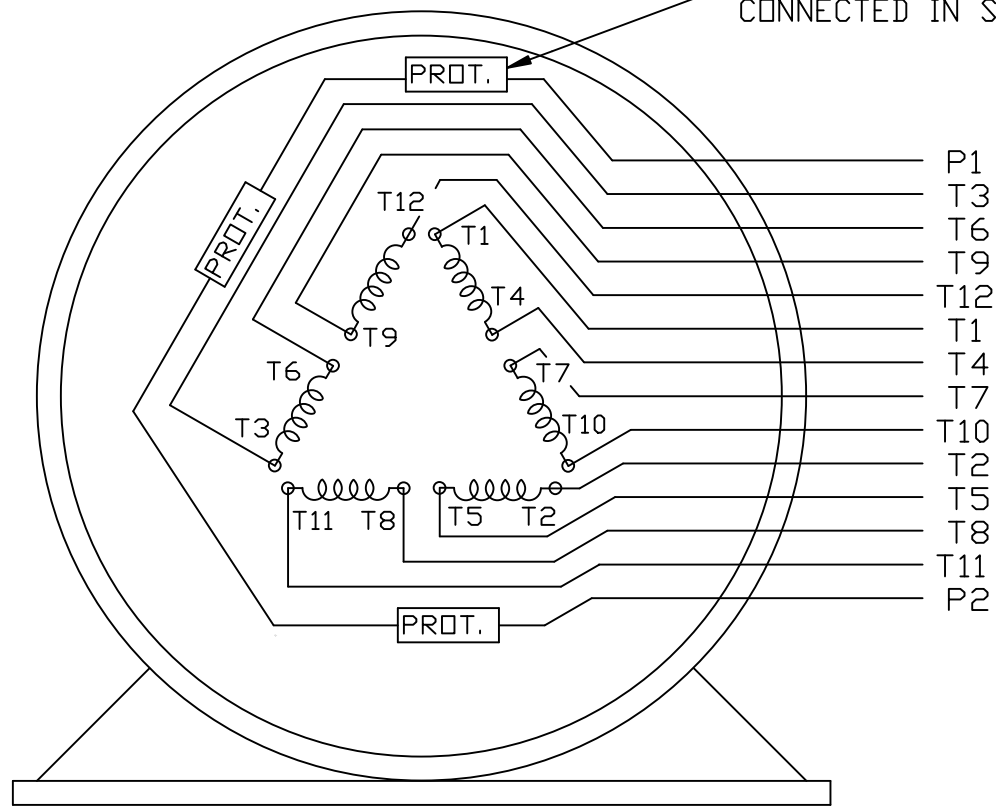
LOW VOLTAGE



HIGH VOLTAGE



THERMO - PROTECTORS
CONNECTED IN SERIES.



VIEW OF TERMINAL END

					✓ UNLESS OTHERWISE SPECIFIED DIMENSIONS ARE IN INCHES TOL. ON XX± XXX± XXXX± ANGLES±				
2	08/17/2011	REMOVED NOTE '12 LEADS SINGLE VOLTAGE'	MU103768		RFH	MAX. SURFACE ROUGHNESS UNLESS OTHERWISE NOTED		DRAWN BY KL	12-11-2000
1	12-11-2000	NEW DRAWING	MU34925		KL	FINISH		CHKD BY DJK	12-11-2000
REV	DATE	CHANGE			NAME	MATERIAL		APPD BY DJK	12-11-2000
					PART NAME EXTERNAL CONNECTION DIAGRAM 3 PHASE - 2/1 DELTA - 12 LEADS				
					PURCHASED		CADD FILE NO.		EE7308BZ-LN



CERTIFICATION DATA SHEET

**2100 WASHINGTON ST.
GRAFTON, WI
PH. 262-277-8810**

CONN. DIAGRAM: A-EE7308BZ-LN

OUTLINE: XF3D1EC33B-1298

WINDING #: 6D284005 1

CATALOG # : LM28208

MOUNTING: F1/F2 CAPABLE

TYPICAL MOTOR PERFORMANCE DATA

HP	kW	SYNC. RPM	F.L. RPM	FRAME	ENCLOSURE	KVA CODE	DESIGN
15	11.2	1200	1182	284TC	DP	L	INV

PH	Hz	VOLTS	AMPS	START TYPE	DUTY	INSL	S.F.	AMB°C
3	60	230/460	49/24.5	Y START D RUN OR INV	SPECIAL	F4	1.0	40

FULL LOAD EFF:	84	3/4 LOAD EFF:	81.5	1/2 LOAD EFF:	77.5	GTD. EFF		ELEC. TYPE	
FULL LOAD PF:	68	3/4 LOAD PF:	60	1/2 LOAD PF:	48	81.5		SQ CAGE INV DUTY	

F.L. TORQUE	LOCKED ROTOR AMPS	L.R. TORQUE	B.D. TORQUE	F.L. RISE°C
66.8 LB-FT	400 / 200	230 LB-FT 344 %	260 LB-FT 389 %	100

SOUND PRESSURE @ 3 FT.	SOUND POWER	ROTOR WK^2	MAX. WK^2	SAFE STALL TIME	STARTS / HOUR	APPROX. MOTOR WGT
66 dBA	76 dBA	4.1 LB-FT^2	- LB-FT^2	- SEC.	-	- LBS.

***** SUPPLEMENTAL INFORMATION *****

DE BRACKET TYPE	ODE BRACKET TYPE	MOUNT TYPE	ORIENTATION	SEVERE DUTY	HAZARDOUS LOCATION	DRIP COVER	SCREENS	PAINT
ENCODER	ENCODER	ROUND	HORIZONTAL	FALSE	NONE	FALSE	NONE	GRAY - LINCOLN

BEARINGS		GREASE	SHAFT TYPE	SPECIAL DE	SPECIAL ODE	SHAFT MATERIAL	FRAME MATERIAL
DE	ODE						
BALL	BALL	POLYREX EM	T	NONE	NONE	1045 HOT ROLLED (C-204)	ROLLED STEEL
310	209						

THERMO-PROTECTORS				THERMISTORS	CONTROL	SPACE HEATERS
THERMOSTATS	PROTECTORS	WDG RTDs	BRG RTDs			
TSTATS (N/C)	NOT	NONE	NONE	NONE	FALSE	NONE VOLTS

*
N
O
T
E
S
*

INVERTER TORQUE: CONSTANT 1000:1
INV. HP SPEED RANGE: NONE
ENCODER: REGAL SUPPLIED - REGAL MOUNT
DYNAPAR HS35 LINCOLN
MS CONNECTOR 1024 PPR
BRAKE: NONE NONE
NONE P/N NONE
NONE NONE
NONE FT-LB NONE V NONE Hz



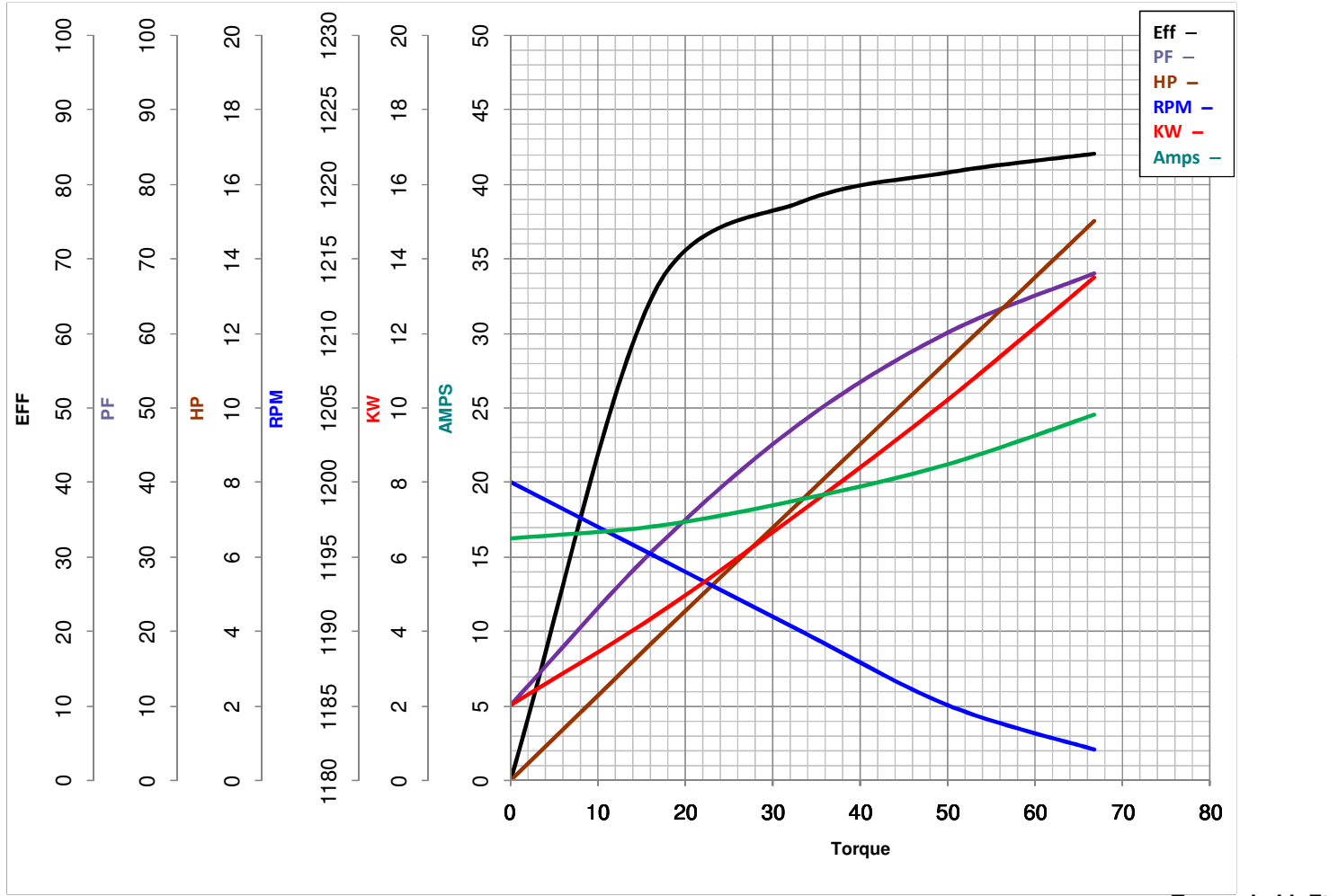
LEESON ELECTRIC CORPORATION
TYPICAL PERFORMANCE CURVE for AC MOTOR

Model No LM28208

Curve at 460 Volts HP 15.00 PHASE 3
60 HZ
15 HP VOLTS 230/460

Catalog No LM28208BB

HZ 60 RPM 1182



FL TORQUE	<u>66.8</u>	Lb.Ft	FL AMPS	<u>49/24.5</u>	
BD TORQUE	<u>260.0</u>	Lb.Ft	PU TORQUE	<u>200.0</u>	Lb.Ft
LR TORQUE	<u>230</u>	Lb.Ft	LR AMPS	<u>200</u>	
WINDING	6D284005-1		Date	5/25/2018	