

PRODUCT INFORMATION PACKET

Model No: LM28144

Catalog No: LM28144

Elevator Duty Motor, 30 HP, 3 Ph, 60 Hz, 200 V, 1200 RPM, 326T Frame, DP



Regal and are trademarks of Regal Rexnord Corporation or one of its affiliated companies.
©2022 Regal Rexnord Corporation, All Rights Reserved. MC017097E

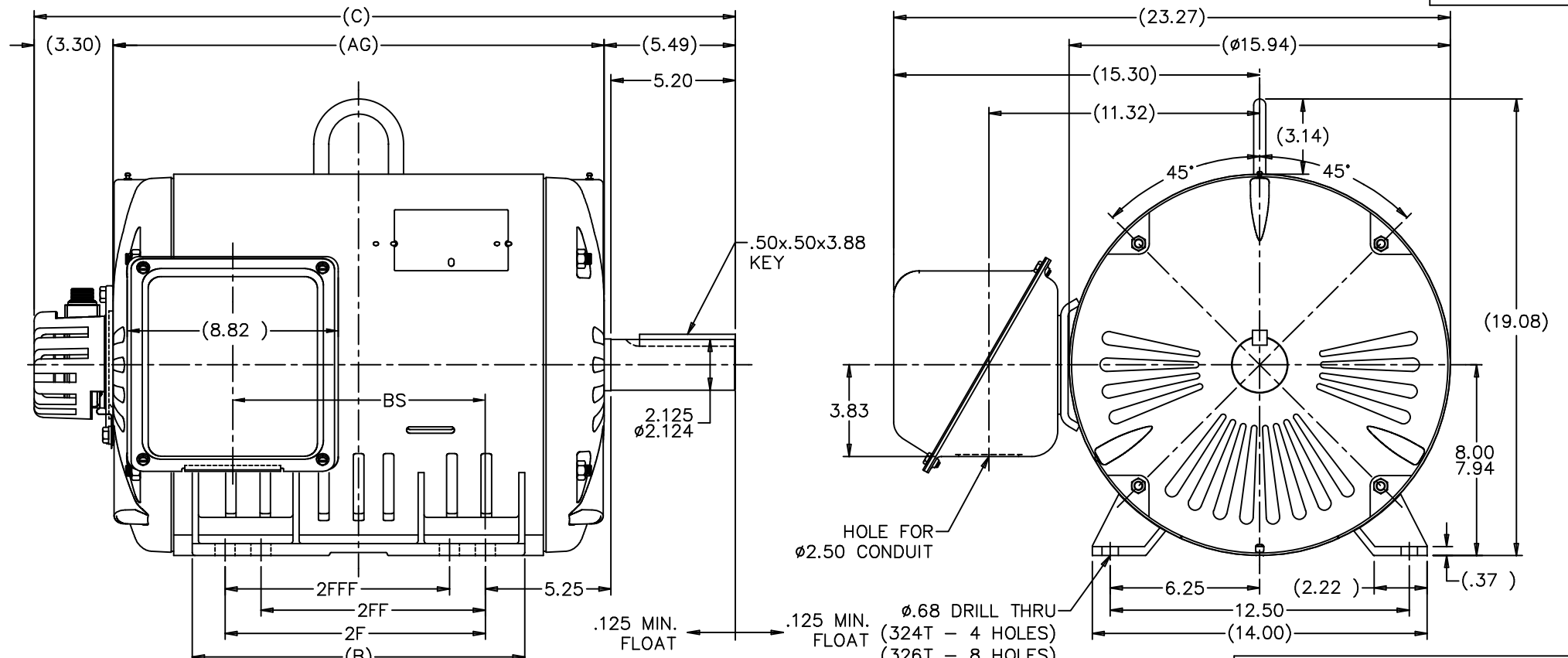
Nameplate Specifications

Output HP	30 Hp	Output KW	22.4 kW
Frequency	60 Hz	Voltage	200 V
Current	87.5 A	Speed	1185 rpm
Service Factor	1	Phase	3
Efficiency	90.2 %	Power Factor	82
Duty	Elevator	Insulation Class	F
Design Code	INV	KVA Code	K
Frame	326T	Enclosure	Drip Proof
Thermal Protection	No Protection	Ambient Temperature	40 °C
Drive End Bearing Size	311	Opp Drive End Bearing Size	309
UL	Recognized	CSA	Y
CE	Y	IP Code	22
Number of Speeds	1		

Technical Specifications

Electrical Type	Squirrel Cage Inverter Duty	Starting Method	Wye Start Delta Run Or Inverter
Poles	6	Rotation	Reversible
Resistance Main	.185 Ohms	Mounting	Rigid Base
Motor Orientation	Horizontal	Drive End Bearing	Ball
Opp Drive End Bearing	Ball	Frame Material	Rolled Steel
Shaft Type	T	Overall Length	30.80 in
Frame Length	16.57 in	Shaft Diameter	2.125 in
Shaft Extension	5.25 in	Assembly/Box Mounting	F1/F2 CAPABLE
Connection Drawing	A-EE7340D-LN	Outline Drawing	XG2D1ES33B-1657

This is an uncontrolled document once printed or downloaded and is subject to change without notice. Date Created:09/07/2022

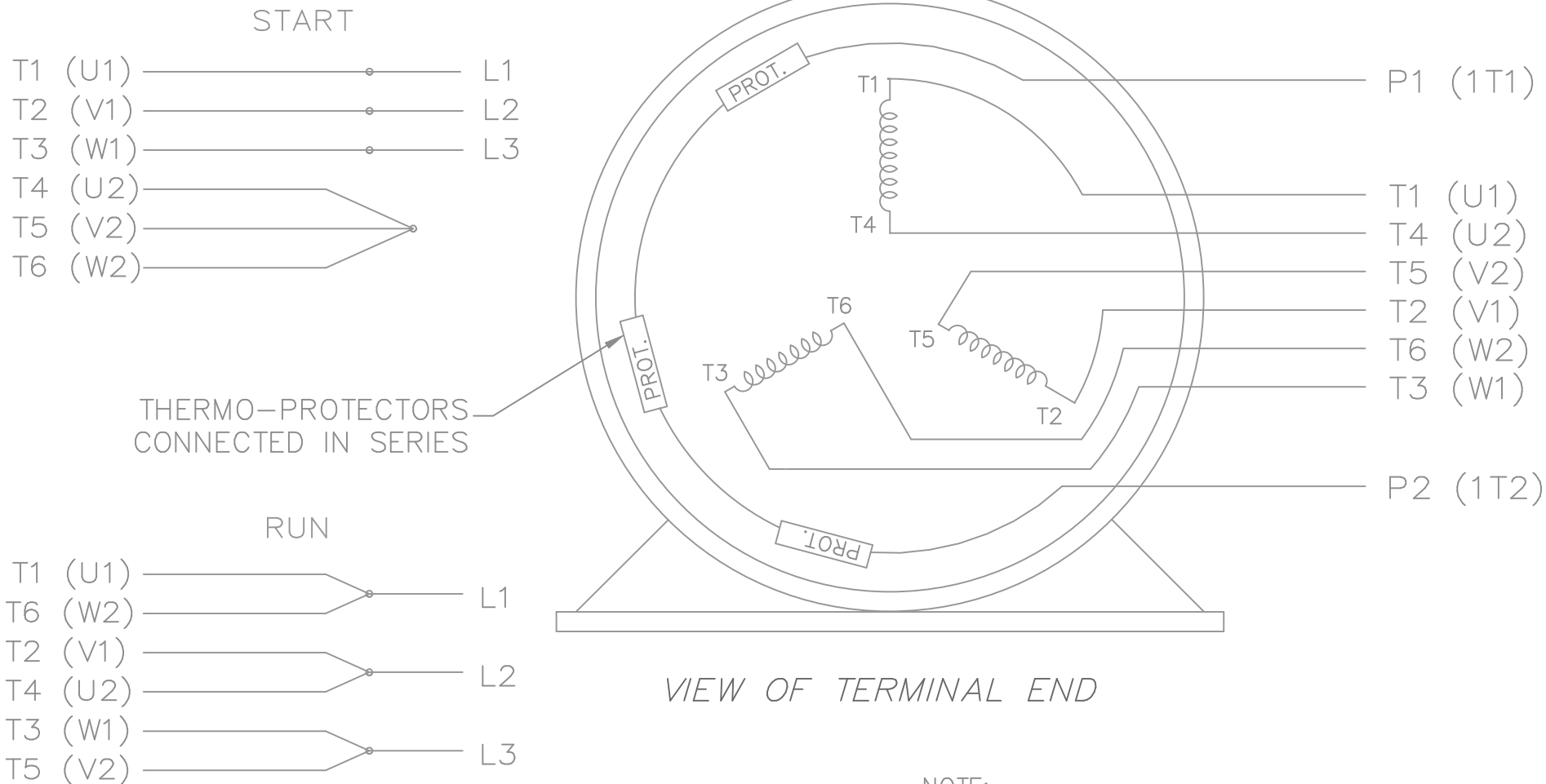


NOTES:
 1. CONDUIT BOX CAN BE ROTATED IN 90° STEPS.
 2. NAMEPLATES TO BE READ FROM CONDUIT BOX SIDE OF MOTOR.

DASH	FRAME	C	AG	B	2F	2FF	2FFF	BS
1507	324T	29.30	20.51	13.52	10.50			10.51
1657	326T	30.80	22.01	15.02	12.00	10.50	10.50	12.01

				TOLERANCES UNLESS SPECIFIED		Lincoln ROTOR		DRAWN CTO 06-10-2002	
				DEC.	INCHES			CHK	ML 06-10-2002
				.X	±.1			APPD	HNH 06-10-2002
				.XX	±.03	TITLE		SCALE	1=4
				.XXX	±.005	VVVF ELEVATOR HOIST MOTOR 320 ODP UE		REF	
NO.	REVISION	MU41735	CTO 06/10/02	HNH	.XXXX	±.0005	MATL	FMF	
				CHK	ANG	±7'30"	FINISH	PREV	
				RFP	CAD FILE		xg2d1es33b	SIZE	DRAWING NO.
				DIST	BY			B	XG2D1ES33B
				THIS DRAWING IN DESIGN AND DETAIL IS OUR PROPERTY AND MUST NOT BE USED EXCEPT IN CONNECTION WITH OUR WORK ALL RIGHTS OF DESIGN AND INVENTION ARE RESERVED THIS IS AN ELECTRONICALLY GENERATED DOCUMENT - DO NOT SCALE THIS PRINT				REV.	1


THREE PHASE
WYE START DELTA RUN



THERMO-PROTECTORS
CONNECTED IN SERIES

VIEW OF TERMINAL END

NOTE:
IEC LEAD MARKINGS ARE NOTED IN PARANTHESES

				TOLERANCES UNLESS SPECIFIED			DRAWN KL 11-10-2000			
				DEC.	INCHES		CHK DJK 11-10-2000			
				.X	±.1		APPD DJK 11-10-2000			
				.XX	±.02		SCALE 1=1			
2	ADDED IEC LEAD MARKINGS	MSG 10-08-2008	ML	.XXX	±.005	TITLE CONNECTION DIAGRAM - EXTERNAL - 3φ WYE START DELTA RUN - SINGLE VOLTAGE	REF			
1	NEW DRAWING MU34618	KL 11-10-2000	DJK	.XXXX	±.0005		MAT'L.	FMF		
NO.	REVISION	BY & DATE	CHK	ANG	±7'30"	FINISH	PREV			
THIS DRAWING IN DESIGN AND DETAIL IS OUR PROPERTY AND MUST NOT BE USED EXCEPT IN CONNECTION WITH OUR WORK ALL RIGHTS OF DESIGN AND INVENTION ARE RESERVED THIS IS AN ELECTRONICALLY GENERATED DOCUMENT - DO NOT SCALE THIS PRINT				RFP	11-10-2000	CAD FILE EE7340D_LN	SIZE A	DRAWING NO. EE7340D_LN	PAGE OF 2	REV. 2
				DIST						



**2100 WASHINGTON ST.
GRAFTON, WI
PH. 262-277-8810**

CERTIFICATION DATA SHEET

CONN. DIAGRAM: A-EE7340D-LN

CATALOG #: LM28144

OUTLINE: XG2D1ES33B-1657

WINDING #: L3266016 3

MOUNTING: F1/F2 CAPABLE

TYPICAL MOTOR PERFORMANCE DATA

HP	kW	SYNC. RPM	F.L. RPM	FRAME	ENCLOSURE	KVA CODE	DESIGN
30	22.4	1200	1185	326T	DP	K	INV

PH	Hz	VOLTS	AMPS	START TYPE	DUTY	INSL	S.F.	AMB°C
3	60	200	87.5	Y START D RUN OR INV	ELEVATOR	F1	1.0	40

FULL LOAD EFF:	90.2	3/4 LOAD EFF:	90.2	1/2 LOAD EFF:	88.5	GTD. EFF	88.5	ELEC. TYPE	SQ CAGE INV DUTY
FULL LOAD PF:	82	3/4 LOAD PF:	77.5	1/2 LOAD PF:	68				

F.L. TORQUE	LOCKED ROTOR AMPS	L.R. TORQUE	B.D. TORQUE	F.L. RISE°C
133 LB-FT	759	300 LB-FT 226 %	410 LB-FT 308 %	100

SOUND PRESSURE @ 3 FT.	SOUND POWER	ROTOR WK^2	MAX. WK^2	SAFE STALL TIME	STARTS / HOUR	APPROX. MOTOR WGT
69 dBA	79 dBA	9 LB-FT^2	- LB-FT^2	- SEC.	-	- LBS.

***** SUPPLEMENTAL INFORMATION *****

DE BRACKET TYPE	ODE BRACKET TYPE	MOUNT TYPE	ORIENTATION	SEVERE DUTY	HAZARDOUS LOCATION	DRIP COVER	SCREENS	PAINT
STANDARD	ENCODER	RIGID	HORIZONTAL	FALSE	NONE	FALSE	NONE	GRAY - LINCOLN

BEARINGS		GREASE	SHAFT TYPE	SPECIAL DE	SPECIAL ODE	SHAFT MATERIAL	FRAME MATERIAL
DE	ODE						
BALL	BALL	POLYREX EM	T	NONE	NONE	1045 HOT ROLLED (C-204)	ROLLED STEEL
311	309						

THERMO-PROTECTORS				THERMISTORS	CONTROL	SPACE HEATERS
THERMOSTATS	PROTECTORS	WDG RTDs	BRG RTDs			
TSTATS (N/C)	NOT	NONE	NONE	NONE	FALSE	NONE VOLTS

*
N
O
T
E
S
*

INVERTER TORQUE: CONSTANT 1000:1
INV. HP SPEED RANGE: NONE
ENCODER: REGAL SUPPLIED - REGAL MOUNT
DYNAPAR HS35 LINCOLN
MS CONNECTOR 1024 PPR
BRAKE: NONE NONE
NONE P/N NONE
NONE NONE
NONE FT-LB NONE V NONE Hz

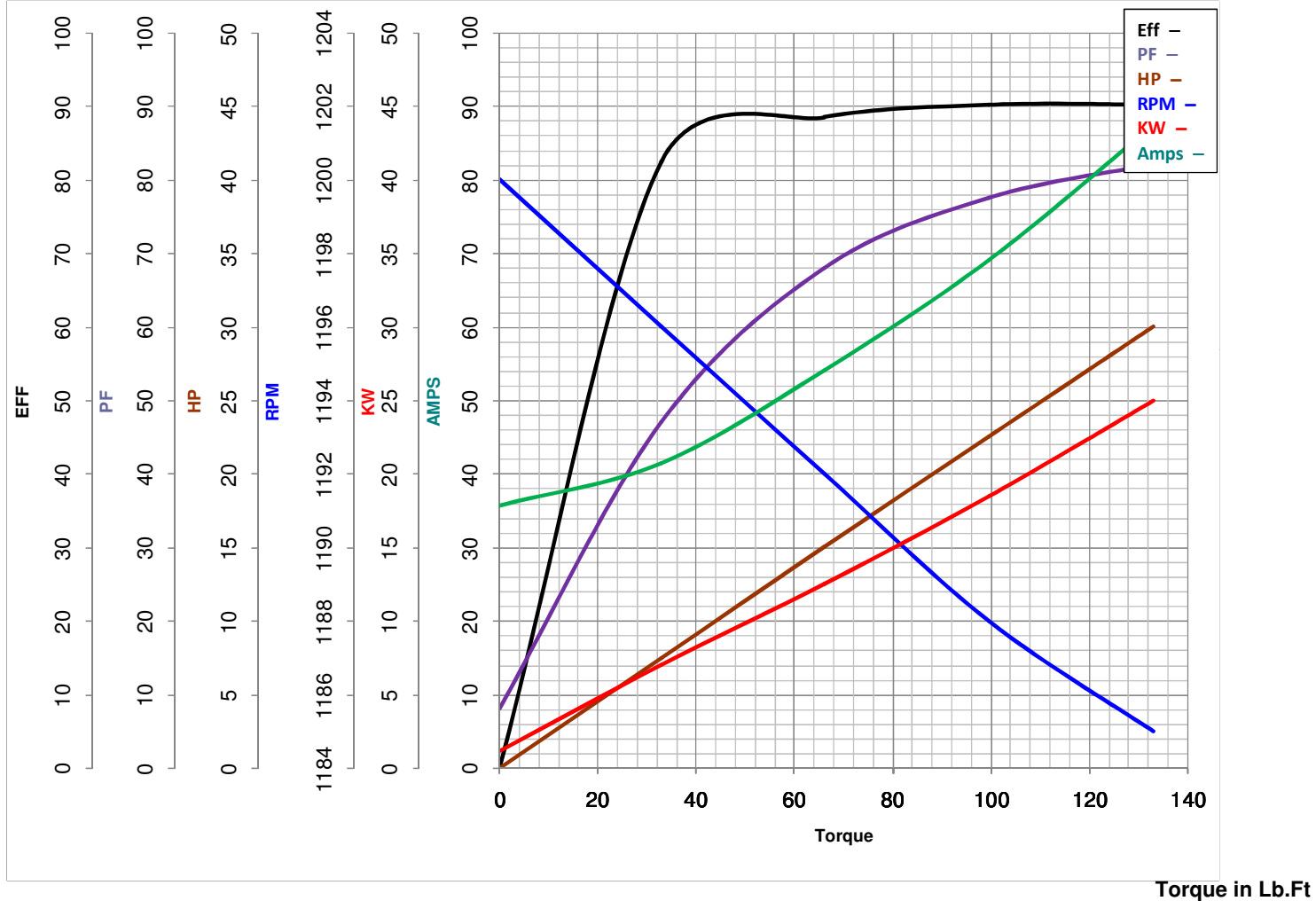


LEESON ELECTRIC CORPORATION
TYPICAL PERFORMANCE CURVE for AC MOTOR

Model No LM28144

Catalog No LM28144BA

Curve at 200 Volts HP 30.00 PHASE 3
60 HZ
30 HP VOLTS 200
 HZ 60 RPM 1185



FL TORQUE	<u>133</u>	Lb.Ft	FL AMPS	<u>87.5</u>	
BD TORQUE	<u>410.0</u>	Lb.Ft	PU TORQUE	<u>285.0</u>	Lb.Ft
LR TORQUE	<u>300</u>	Lb.Ft	LR AMPS	<u>759</u>	
WINDING	L3266016-3		Date	<u>6/4/2018</u>	