

PRODUCT INFORMATION PACKET

Model No: LM28139

Catalog No: LM28139

Elevator Duty Motor, 25 HP, 3 Ph, 60 Hz, 200 V, 1200 RPM, 324T Frame, DP



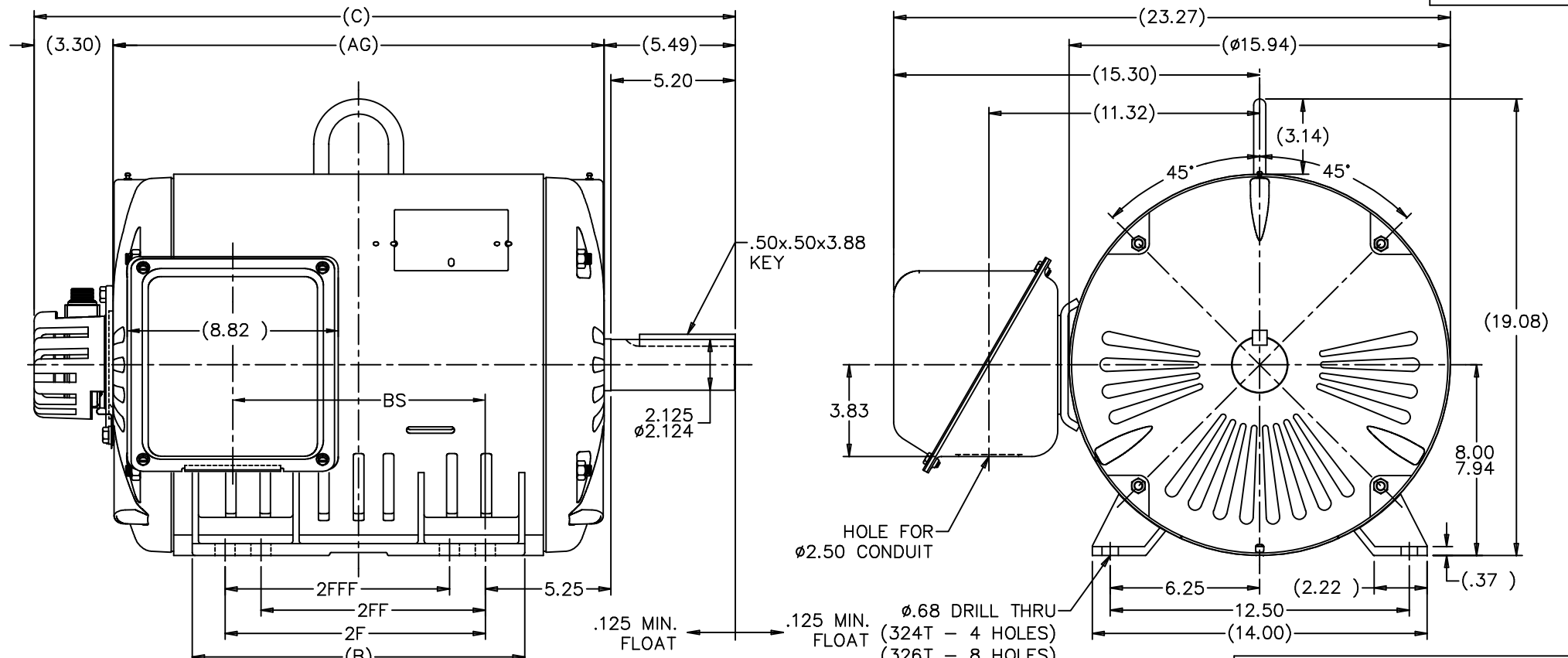
Regal and are trademarks of Regal Rexnord Corporation or one of its affiliated companies.
©2022 Regal Rexnord Corporation, All Rights Reserved. MC017097E

Nameplate Specifications

Output HP	25 Hp	Output KW	18.7 kW
Frequency	60 Hz	Voltage	200 V
Current	73.5 A	Speed	1185 rpm
Service Factor	1	Phase	3
Efficiency	91 %	Power Factor	80
Duty	Elevator	Insulation Class	F
Design Code	INV	KVA Code	K
Frame	324T	Enclosure	Drip Proof
Thermal Protection	No Protection	Ambient Temperature	40 °C
Drive End Bearing Size	311	Opp Drive End Bearing Size	309
UL	Recognized	CSA	Y
CE	Y	IP Code	22
Number of Speeds	1		

Technical Specifications

Electrical Type	Squirrel Cage Inverter Duty	Starting Method	Wye Start Delta Run Or Inverter
Poles	6	Rotation	Reversible
Resistance Main	.22 Ohms	Mounting	Rigid Base
Motor Orientation	Horizontal	Drive End Bearing	Ball
Opp Drive End Bearing	Ball	Frame Material	Rolled Steel
Shaft Type	T	Overall Length	29.30 in
Frame Length	15.07 in	Shaft Diameter	2.125 in
Shaft Extension	5.25 in	Assembly/Box Mounting	F1/F2 CAPABLE
Inverter Load	CONSTANT 1000:1		
Connection Drawing	A-EE7340D-LN	Outline Drawing	XG2D1ES33B-1507

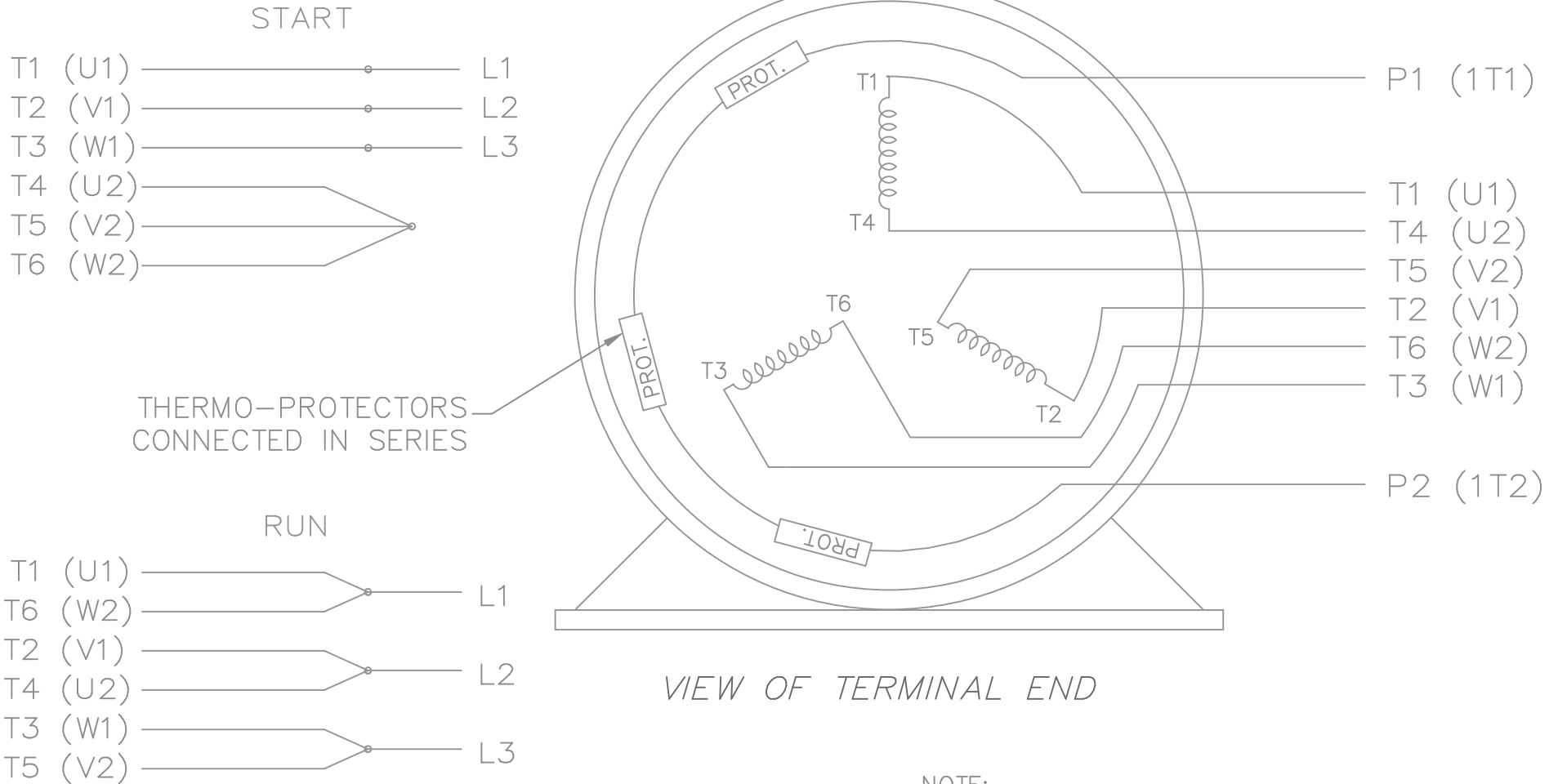


NOTES:
 1. CONDUIT BOX CAN BE ROTATED IN 90° STEPS.
 2. NAMEPLATES TO BE READ FROM CONDUIT BOX SIDE OF MOTOR.

DASH	FRAME	C	AG	B	2F	2FF	2FFF	BS
1507	324T	29.30	20.51	13.52	10.50			10.51
1657	326T	30.80	22.01	15.02	12.00	10.50	10.50	12.01

				TOLERANCES UNLESS SPECIFIED		Lincoln ROTOR		DRAWN CTO 06-10-2002	
DEC.	INCHES			CHK	ANG			CHK	ML 06-10-2002
.X	±.1			HNH	.XXX	±.005	TITLE	APPD	HNH 06-10-2002
.XX	±.03			RF	ANG	±7°30'	VVVF ELEVATOR HOIST MOTOR 320 ODP UE	SCALE	1=4
.XXX	±.005			THIS DRAWING IN DESIGN AND DETAIL IS OUR PROPERTY AND MUST NOT BE USED EXCEPT IN CONNECTION WITH OUR WORK ALL RIGHTS OF DESIGN AND INVENTION ARE RESERVED THIS IS AN ELECTRONICALLY GENERATED DOCUMENT - DO NOT SCALE THIS PRINT		CAD FILE		PREV	
1 NEW DRAWING				MU41735	CTO 06/10/02	xg2d1es33b		SIZE	DRAWING NO.
NO. REVISION				BY & DATE			B	XG2D1ES33B	REV.
								1	


THREE PHASE
WYE START DELTA RUN



THERMO-PROTECTORS
CONNECTED IN SERIES

VIEW OF TERMINAL END

NOTE:
IEC LEAD MARKINGS ARE NOTED IN PARANTHESES

				TOLERANCES UNLESS SPECIFIED			DRAWN KL 11-10-2000			
				DEC.	INCHES		CHK DJK 11-10-2000			
				.X	±.1		APPD DJK 11-10-2000			
				.XX	±.02		SCALE 1=1			
2	ADDED IEC LEAD MARKINGS	MSG 10-08-2008	ML	.XXX	±.005	TITLE CONNECTION DIAGRAM - EXTERNAL - 3φ WYE START DELTA RUN - SINGLE VOLTAGE	REF			
1	NEW DRAWING MU34618	KL 11-10-2000	DJK	.XXXX	±.0005		MAT'L.	FMF		
NO.	REVISION	BY & DATE	CHK	ANG	±7'30"	FINISH	PREV			
THIS DRAWING IN DESIGN AND DETAIL IS OUR PROPERTY AND MUST NOT BE USED EXCEPT IN CONNECTION WITH OUR WORK ALL RIGHTS OF DESIGN AND INVENTION ARE RESERVED THIS IS AN ELECTRONICALLY GENERATED DOCUMENT - DO NOT SCALE THIS PRINT				RFP	11-10-2000	CAD FILE EE7340D_LN	SIZE A	DRAWING NO. EE7340D_LN	PAGE OF 2	REV. 2
				DIST						



**2100 WASHINGTON ST.
GRAFTON, WI
PH. 262-277-8810**

CONN. DIAGRAM: A-EE7340D-LN

OUTLINE: XG2D1ES33B-1507

CATALOG #: LM28139

WINDING #: L3246016 3

MOUNTING: F1/F2 CAPABLE

TYPICAL MOTOR PERFORMANCE DATA

HP	kW	SYNC. RPM	F.L. RPM	FRAME	ENCLOSURE	KVA CODE	DESIGN
25	18.7	1200	1185	324T	DP	K	INV

PH	Hz	VOLTS	AMPS	START TYPE	DUTY	INSL	S.F.	AMB°C
3	60	200	73.5	Y START D RUN OR INV	ELEVATOR	F1	1.0	40

FULL LOAD EFF:	91	3/4 LOAD EFF:	90.2	1/2 LOAD EFF:	89.5	GTD. EFF	ELEC. TYPE
FULL LOAD PF:	80	3/4 LOAD PF:	74	1/2 LOAD PF:	63	89.5	SQ CAGE INV DUTY

F.L. TORQUE	LOCKED ROTOR AMPS	L.R. TORQUE	B.D. TORQUE	F.L. RISE°C
111 LB-FT	598	235 LB-FT 212 %	360 LB-FT 324 %	100

SOUND PRESSURE @ 3 FT.	SOUND POWER	ROTOR WK^2	MAX. WK^2	SAFE STALL TIME	STARTS / HOUR	APPROX. MOTOR WGT
69 dBA	79 dBA	0 LB-FT^2	- LB-FT^2	- SEC.	-	- LBS.

***** SUPPLEMENTAL INFORMATION *****

DE BRACKET TYPE	ODE BRACKET TYPE	MOUNT TYPE	ORIENTATION	SEVERE DUTY	HAZARDOUS LOCATION	DRIP COVER	SCREENS	PAINT
STANDARD	ENCODER	RIGID	HORIZONTAL	FALSE	NONE	FALSE	NONE	GRAY - LINCOLN

BEARINGS		GREASE	SHAFT TYPE	SPECIAL DE	SPECIAL ODE	SHAFT MATERIAL	FRAME MATERIAL
DE	ODE						
BALL	BALL	POLYREX EM	T	NONE	NONE	1045 HOT ROLLED (C-204)	ROLLED STEEL
311	309						

THERMO-PROTECTORS				THERMISTORS	CONTROL	SPACE HEATERS
THERMOSTATS	PROTECTORS	WDG RTDs	BRG RTDs			
TSTATS (N/C)	NOT	NONE	NONE	NONE	FALSE	NONE VOLTS

*
N
O
T
E
S
*

INVERTER TORQUE: CONSTANT 1000:1
INV. HP SPEED RANGE: NONE
ENCODER: REGAL SUPPLIED - REGAL MOUNT
DYNAPAR HS35 LINCOLN
MS CONNECTOR 1024 PPR
BRAKE: NONE NONE
NONE P/N NONE
NONE NONE
NONE FT-LB NONE V NONE Hz



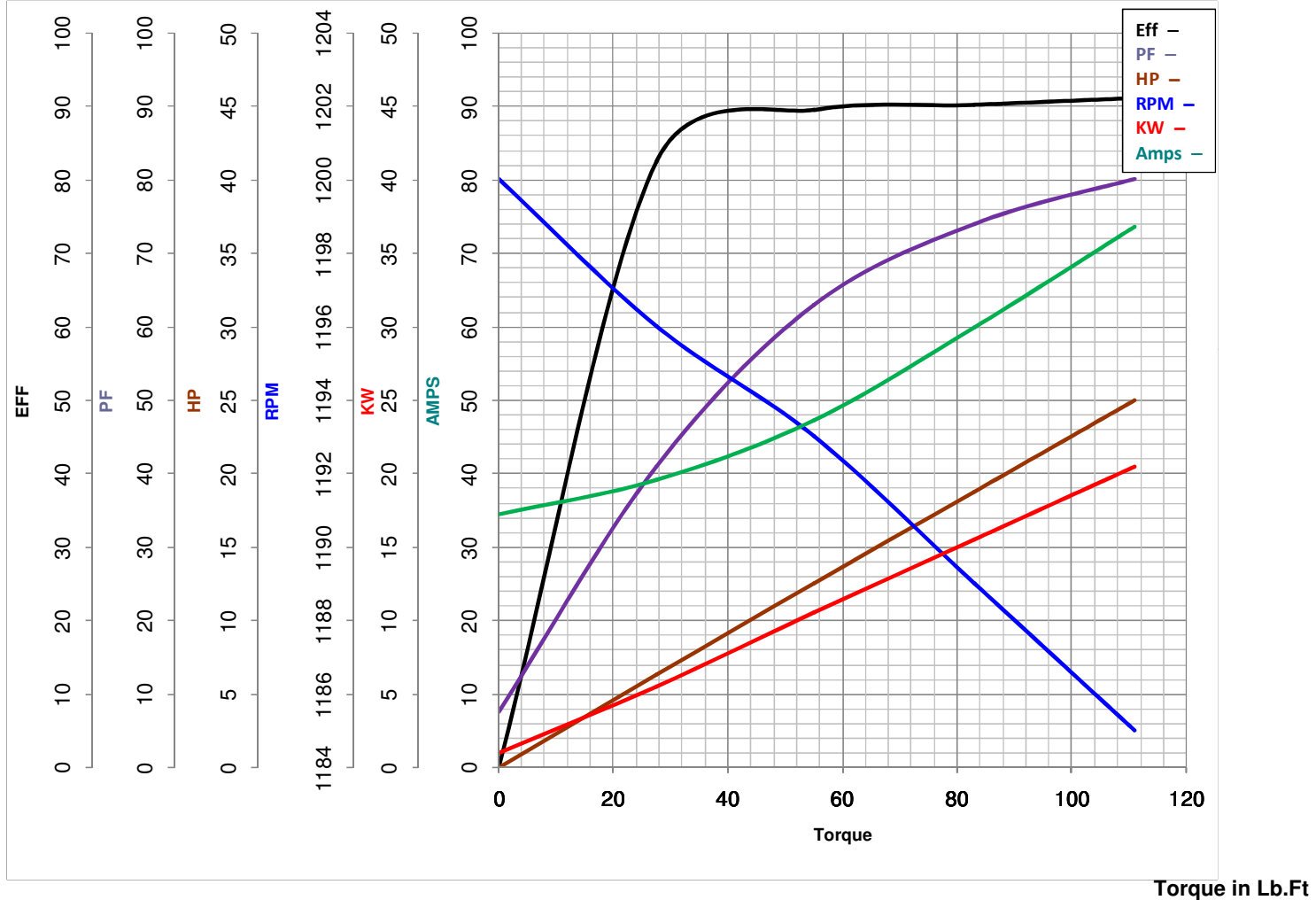
LEESON ELECTRIC CORPORATION
TYPICAL PERFORMANCE CURVE for AC MOTOR

Model No LM28139

Curve at 200 Volts HP 25.00 PHASE 3
60 HZ
25 HP VOLTS 200

Catalog No LM28139CC

HZ 60 RPM 1185



FL TORQUE	<u>111</u>	Lb.Ft	FL AMPS	<u>73.5</u>	
BD TORQUE	<u>360.0</u>	Lb.Ft	PU TORQUE	<u>223.0</u>	Lb.Ft
LR TORQUE	<u>235</u>	Lb.Ft	LR AMPS	<u>598</u>	
WINDING	L3246016-3		Date	5/28/2018	