

PRODUCT INFORMATION PACKET



Model No: LM28114
Catalog No: LM28114
Elevator Duty Motor, 7.50 HP, 3 Ph, 60 Hz, 230/460 V, 1200 RPM, 254T Frame, DP



Regal and Leeson are trademarks of Regal Rexnord Corporation or one of its affiliated companies.
©2024 Regal Rexnord Corporation, All Rights Reserved. MC017097E





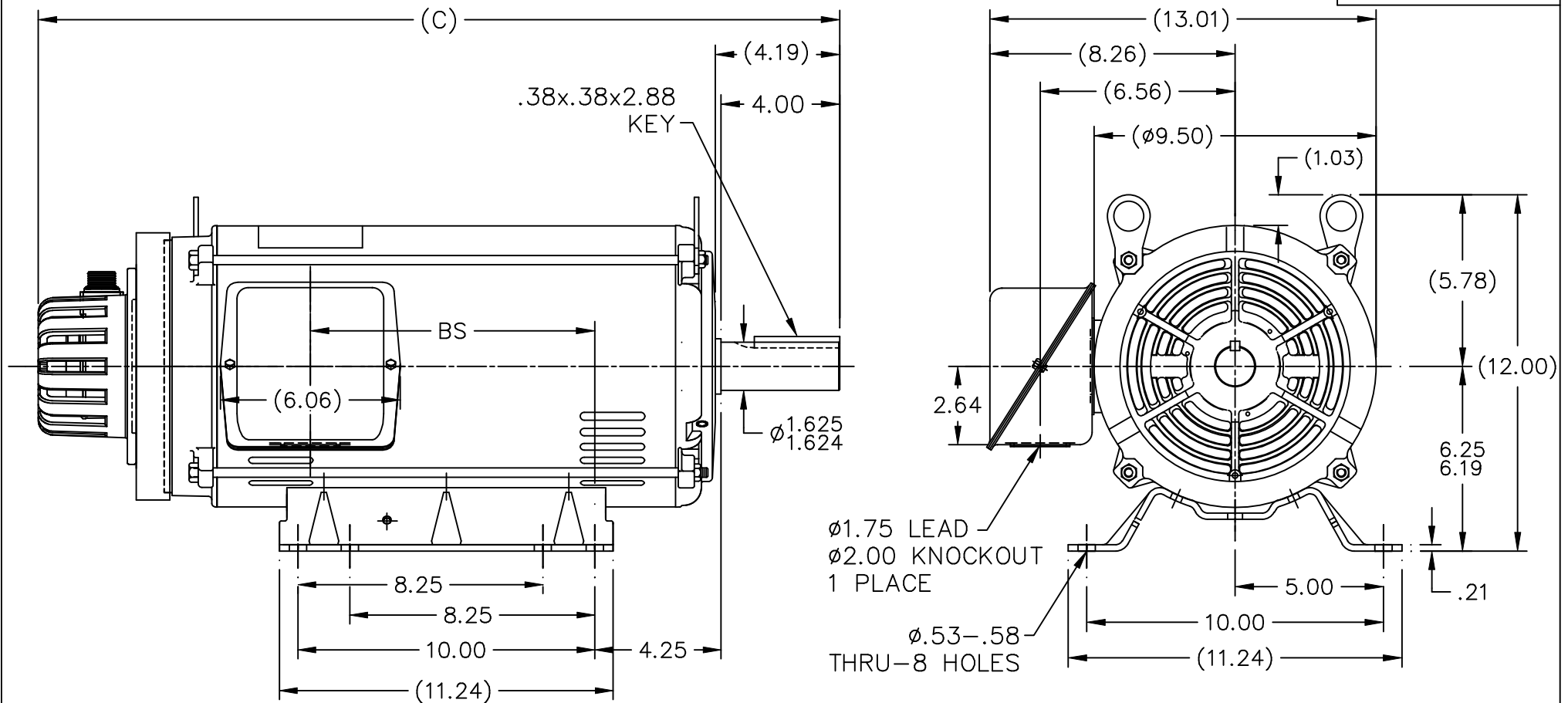
Nameplate Specifications

Phase	3	Output HP	7.50 Hp
Output KW	5.6 kW	Voltage	230/460 V
Speed	1155 rpm	Service Factor	1.0
Frame	254T	Enclosure	Drip Proof
Thermal Protection	Thermostat	Efficiency	82.5 %
Ambient Temperature	40 °C	Frequency	60 Hz
Current	24.0/12.0 A	Power Factor	70
Duty	SPECIAL	Insulation Class	F
Design Code	SPECIAL	KVA Code	J
Drive End Bearing Size	309	Opp Drive End Bearing Size	208
UL	Recognized	CSA	Y
CE	Y	IP Code	12
Number of Speeds	1		

Technical Specifications


Electrical Type	Squirrel Cage Inverter Duty	Starting Method	Inverter Only
Poles	6	Rotation	Reversible
Resistance Main	2.08 Ohms	Mounting	Rigid Base
Motor Orientation	Horizontal	Drive End Bearing	Ball
Opp Drive End Bearing	Ball	Frame Material	Rolled Steel
Shaft Type	T	Shaft Diameter	1.625 in
Assembly/Box Mounting	F1/F2 CAPABLE	Inverter Load	CONSTANT 1000:1
Outline Drawing	A-SS88763LN-1370	Connection Drawing	A-EE7308T-LN

This is an uncontrolled document once printed or downloaded and is subject to change without notice. Date Created:09/30/2024



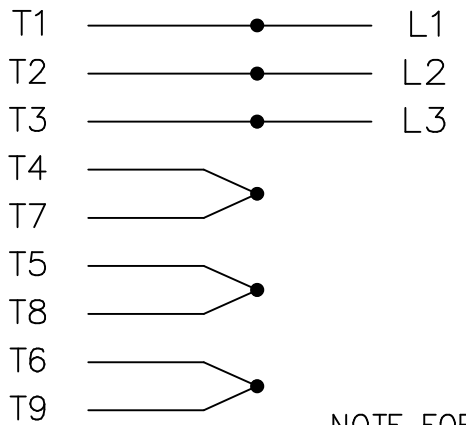
DASH	FR.	C	BS	MOUNTING
1370	254T	25.25	7.68	F1 OR F2
1545	254/256T	27.00	9.43	F1 OR F2

- NOTES:
1. NAMEPLATE TO BE READ FROM C'BOX SIDE OF MOTOR.
 2. BOX CAN BE MOUNTED IN 90° STEPS.
 3. BOX CAN BE MOUNTED ON OPPOSITE SIDE BY REMOVING BRACKETS AND TURNING FRAME 180°. (EXCEPT AS NOTED.)

				TOLERANCES UNLESS SPECIFIED			DRAWN TJB 11-26-2002	
				DEC.	INCHES		CHK	ML 12-02-2002
				.X	±.1		APPD	BW 12-03-2002
2	REVISED O.D.E. BRACKET	MU43968	TJB 12-13-2002	DRS	.XXX	±.005	TITLE OUTLINE - STEEL C'BOX HS35 TACH	
1	NEW DRAWING	MU43968	TJB 12-03-2002	BW	.XXXX	±.0005	250T FR. - BB - DR.PR.	
NO.	REVISION	BY & DATE	CHK	ANG	±7'30"		SCALE	1=5
THIS DRAWING IN DESIGN AND DETAIL IS OUR PROPERTY AND MUST NOT BE USED EXCEPT IN CONNECTION WITH OUR WORK ALL RIGHTS OF DESIGN AND INVENTION ARE RESERVED THIS IS AN ELECTRONICALLY GENERATED DOCUMENT - DO NOT SCALE THIS PRINT				RFP	CAD FILE ss88763ln		SIZE	DRAWING NO. PAGE OF
				DIST	LB		A	SS88763LN 2

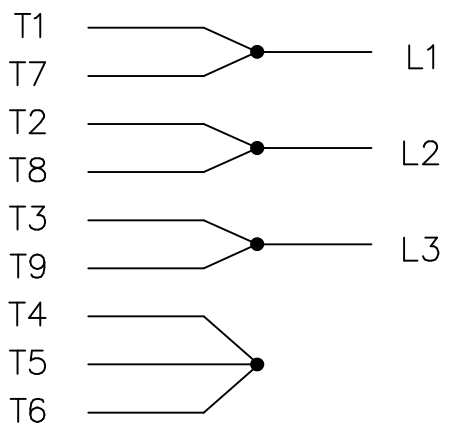
THREE PHASE
DUAL VOLTAGE MOTOR

HIGH VOLTAGE

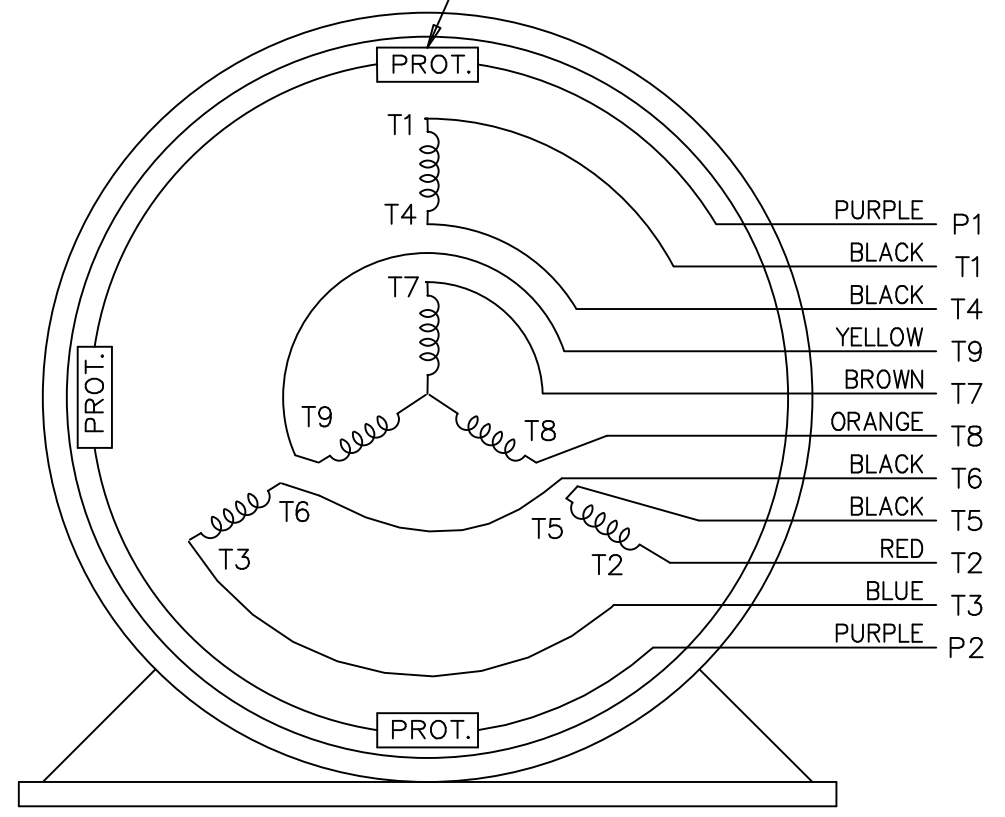


NOTE FOR FACTORY USE ONLY:
TO SURGE TEST FOR COMMON CONNECT:
HIGH VOLT: CONNECT P1 TO T1
 THEN P2 TO L1
LOW VOLT: CONNECT P1 TO T1 & T7,
 THEN P2 TO L1

LOW VOLTAGE



THREMO-PROTECTORS
CONNECTED IN SERIES.



VIEW OF TERMINAL END

				TOLERANCES UNLESS SPECIFIED			DRAWN BJK 07-16-2002
				DEC.	INCHES		CHK DRS 07-18-2002
				.X	±.1		APPD GK 07-18-2002
				.XX	±.02	TITLE CONNECTION DIAGRAM	SCALE 1=1
2	ADDED COLORS TO "T & P" LEADS	CN 40494	MSG 08-08-2006	ML	.XXX	±.005	3 PHASE - DUAL VOLTAGE MOTOR
1	NEW DRAWING		BJK 07-18-2002	DRS	.XXXX	±.0005	MAT'L.
NO.	REVISION	BY & DATE	CHK	ANG	±7'30"		PREV
THIS DRAWING IN DESIGN AND DETAIL IS OUR PROPERTY AND MUST NOT BE USED EXCEPT IN CONNECTION WITH OUR WORK ALL RIGHTS OF DESIGN AND INVENTION ARE RESERVED THIS IS AN ELECTRONICALLY GENERATED DOCUMENT - DO NOT SCALE THIS PRINT				RFP	CAD FILE ee7308t_ln		SIZE A
				DIST LB			DRAWING NO. EE7308T-LN
							PAGE OF 2
							REV. 2



CERTIFICATION DATA SHEET

**2100 WASHINGTON ST.
GRAFTON, WI
PH. 262-277-8810**

CONN. DIAGRAM: A-EE7308T-LN

OUTLINE: A-SS88763LN-1370

WINDING #: K2156159 1

CATALOG : LM28114

MOUNTING: F1/F2 CAPABLE

TYPICAL MOTOR PERFORMANCE DATA

HP	kW	SYNC. RPM	F.L. RPM	FRAME	ENCLOSURE	KVA CODE	DESIGN
7 1/2	5.60	1200	1155	254T	DP	J	SPECIAL

PH	Hz	VOLTS	AMPS	START TYPE	DUTY	INSL	S.F.	AMB°C
3	60	230/460	24/12	INVERTER ONLY	SPECIAL	F3	1.0	40

FULL LOAD EFF:	82.5	3/4 LOAD EFF:	82.5	1/2 LOAD EFF:	80	GTD. EFF		ELEC. TYPE	
FULL LOAD PF:	70	3/4 LOAD PF:	61	1/2 LOAD PF:	48	80		SQ CAGE INV DUTY	

F.L. TORQUE	LOCKED ROTOR AMPS	L.R. TORQUE	B.D. TORQUE	F.L. RISE°C
34 LB-FT	150 / 75	85 LB-FT 250 %	95 LB-FT 279 %	70

SOUND PRESSURE @ 3 FT.	SOUND POWER	ROTOR WK^2	MAX. WK^2	SAFE STALL TIME	STARTS / HOUR	APPROX. MOTOR WGT
64 dBA	74 dBA	0.7 LB-FT^2	- LB-FT^2	- SEC.	-	125 LBS.

***** SUPPLEMENTAL INFORMATION *****

DE BRACKET TYPE	ODE BRACKET TYPE	MOUNT TYPE	ORIENTATION	SEVERE DUTY	HAZARDOUS LOCATION	DRIP COVER	SCREENS	PAINT
STANDARD	ENCODER	RIGID	HORIZONTAL	FALSE	NONE	-	NONE	LINCOLN GRAY

BEARINGS		GREASE	SHAFT TYPE	SPECIAL DE	SPECIAL ODE	SHAFT MATERIAL	FRAME MATERIAL
DE	ODE						
BALL	BALL	STANDARD	T	NONE	NONE	STANDARD	ROLLED STEEL
309	208						

THERMO-PROTECTORS				THERMISTORS	CONTROL	SPACE HEATERS
THERMOSTATS	PROTECTORS	WDG RTDs	BRG RTDs			
TSTATS (N/C)	NOT	NONE	NONE	NONE	FALSE	NONE VOLTS

*
N
O
T
E
S
*

INVERTER TORQUE: CONSTANT 1000:1
INV. HP SPEED RANGE: NONE
ENCODER: M.E. SUPPLIED - M.E. MOUNT
DANAHER HS35 LINCOLN
MS CONNECTOR 1024 PPR
BRAKE: NONE NONE
NONE P/N NONE
NONE NONE
FT-LB V NONE Hz



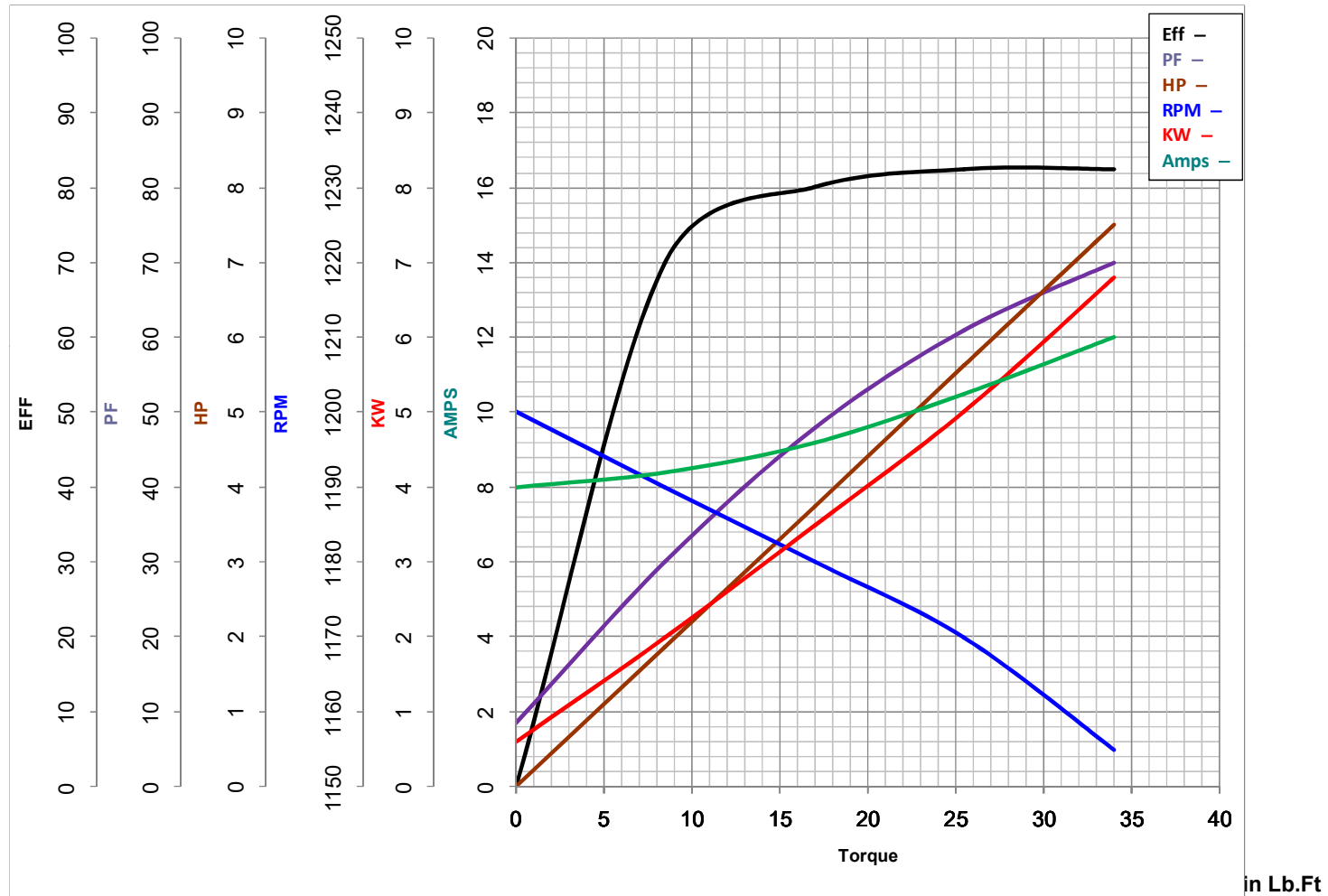
LEESON ELECTRIC CORPORATION
 TYPICAL PERFORMANCE CURVE for AC MOTOR

Model No LM28114

Curve at 460 Volts HP 7.50 PHASE 3
60 HZ
7.5 HP VOLTS 230/460

Catalog No LM28114BB

HZ 60 RPM 1155



FL TORQUE	<u>34</u>	Lb.Ft	FL AMPS	<u>24/12</u>
BD TORQUE	<u>95.0</u>	Lb.Ft	PU TORQUE	<u>76.5</u> Lb.Ft
LR TORQUE	<u>85</u>	Lb.Ft	LR AMPS	<u>75</u>
WINDING	K2156159-1		Date	10/25/2018

EC Declaration of Conformity

The undersigned representing
the manufacturer:

Regal Beloit America
100 East Randolph St.
Wausau, WI 54401

and the authorized representative
established within the Community:

Marathon Electric UK
6F Thistleton Road Ind. Estate
Market Overton
Oakham, Rutland LE15 7PP UK

are committed to providing customers with products that comply with applicable regulations and international protocols to which they are subject, including the requirements of the European Parliament Directive on the Harmonization of the laws relating to electrical equipment designed for use within certain voltage limits (2014/35/EU).

Regal Beloit America declares that the following product(s), to which this declaration relates, are in conformity with the relevant sections of the EC standards listed below.

This statement supersedes any statements previously issued pertaining to the product(s) listed below and is subject to change without notice.

Model No : LM28114

(Model No. may contain prefix and/or suffix characters)

Catalog No : LM28114

Rework No : N/A

Directives :

Low Voltage Directive 2014/35/EU

Harmonized Standards Used :

EN 60034-1: 2010 (IEC 60034-1: 2010)

EN 60034-5: 2001/A1:2007 (IEC 60034-5: 2000/A1:2006)

Authorized Representative:



Michael A. Logsdon
Vice President, Technology

Authorized Representative in the Community:



Julian Clark
Marketing Engineer

Created on 09/01/2022

CE 22