

PRODUCT INFORMATION PACKET

Model No: LM27976

Catalog No: LM27976

Elevator Duty Motor, 30 HP, 3 Ph, 60 Hz, 230/460 V, 1200 RPM, 326T Frame, DP



Regal and are trademarks of Regal Rexnord Corporation or one of its affiliated companies.
©2022 Regal Rexnord Corporation, All Rights Reserved. MC017097E

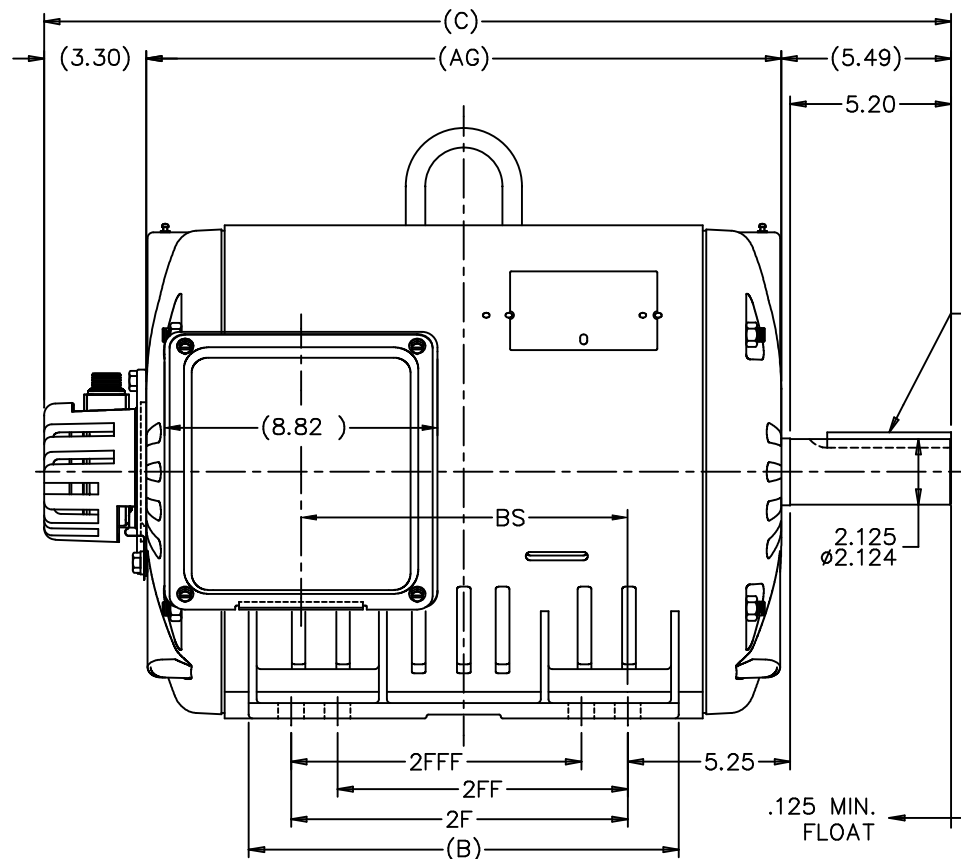
Nameplate Specifications

Output HP	30 Hp	Output KW	22.4 kW
Frequency	60 Hz	Voltage	230/460 V
Current	76.0/38.0 A	Speed	1185 rpm
Service Factor	1	Phase	3
Efficiency	90.2 %	Power Factor	82
Duty	Elevator	Insulation Class	F
Design Code	INV	KVA Code	K
Frame	326T	Enclosure	Drip Proof
Thermal Protection	No Protection	Ambient Temperature	40 °C
Drive End Bearing Size	311	Opp Drive End Bearing Size	309
UL	Recognized	CSA	Y
CE	Y	IP Code	22
Number of Speeds	1		

Technical Specifications

Electrical Type	Squirrel Cage Inverter Duty	Starting Method	Wye Start Delta Run Or Inverter
Poles	6	Rotation	Reversible
Resistance Main	.185 Ohms	Mounting	Rigid Base
Motor Orientation	Horizontal	Drive End Bearing	Ball
Opp Drive End Bearing	Ball	Frame Material	Rolled Steel
Shaft Type	T	Overall Length	30.80 in
Frame Length	16.57 in	Shaft Diameter	2.125 in
Shaft Extension	5.25 in	Assembly/Box Mounting	F1/F2 CAPABLE
Outline Drawing	XG2D1ES33B-1657	Connection Drawing	A-EE7308BZ-LN

This is an uncontrolled document once printed or downloaded and is subject to change without notice. Date Created:09/07/2022

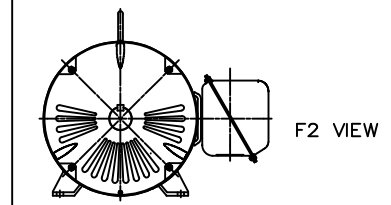
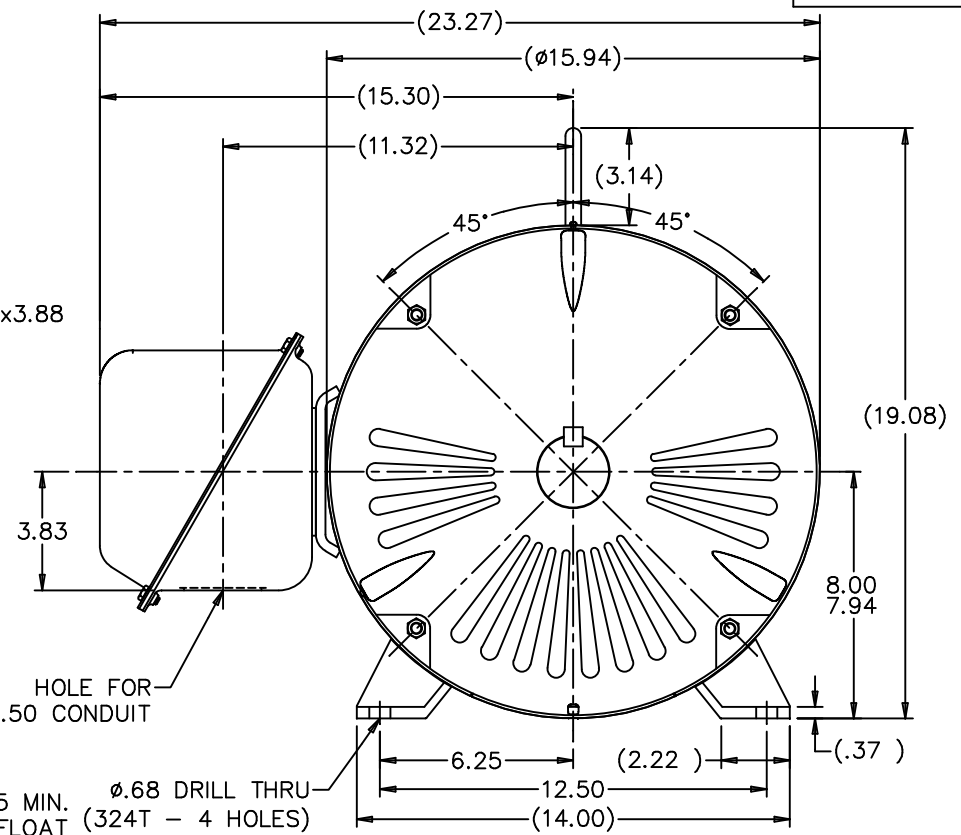


.50x.50x3.88
KEY

2.125
ø2.124

HOLE FOR
ø2.50 CONDUIT

ø.68 DRILL THRU
(324T - 4 HOLES)
(326T - 8 HOLES)



NOTES:
1. CONDUIT BOX CAN BE ROTATED IN 90° STEPS.
2. NAMEPLATES TO BE READ FROM CONDUIT BOX
SIDE OF MOTOR.

DASH	FRAME	C	AG	B	2F	2FF	2FFF	BS
1507	324T	29.30	20.51	13.52	10.50			10.51
1657	326T	30.80	22.01	15.02	12.00	10.50	10.50	12.01

				TOLERANCES UNLESS SPECIFIED					
				DEC.	INCHES				
				.X	±.1				
				.XX	±.03	TITLE			
				.XXX	±.005	VVF ELEVATOR HOIST MOTOR 320 ODP UE			
1 NEW DRAWING				MU41735	CTO 06/10/02	MAT'L			
NO.				REVISION	BY & DATE	FINISH			
				CHK	ANG	CAD FILE			
				RFP		xg2d1es33b			
				DIST	BY	SIZE			
								DRAWING NO.	REV.
								B	XG2D1ES33B 1



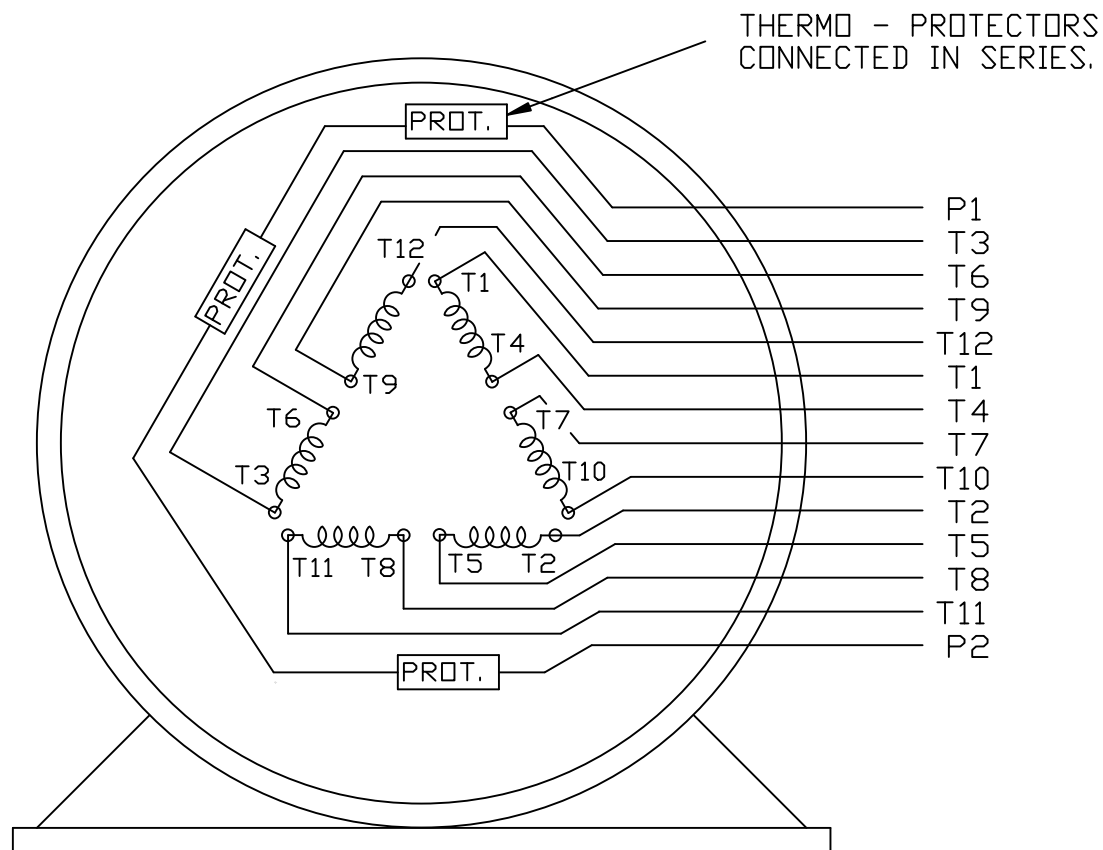
DRAWN CTO 06-10-2002
CHK ML 06-10-2002
APPD HNH 06-10-2002
SCALE 1=4
REF
FMF
PREV

Diagram illustrating a 3-phase transmission line configuration with 9 towers (T1 through T9) and three line sections (LINE 1, LINE 2, LINE 3).

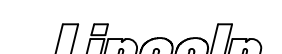
The towers are arranged in a sequence: T1, T4, T7, T2, T10, T5, T8, T3, T11, T6, T9. The line is divided into three sections:

- LINE 1: T1 to T4
- LINE 2: T5 to T8
- LINE 3: T9

The towers are connected to a common ground line labeled "HIGH VOLTAGE".



VIEW OF TERMINAL END

				<div></div>	✓ <div>UNLESS OTHERWISE SPECIFIED DIMENSIONS ARE IN INCHES TOL. ON XX± XXX± XXXX± ANGLES±</div>				
2	08/17/2011	REMOVED NOTE '12 LEADS SINGLE VOLTAGE'	MU103768		RFH	MAX. SURFACE ROUGHNESS UNLESS OTHERWISE NOTED		DRAWN BY KL	12-11-2000
						FINISH		CHKD BY DJK	12-11-2000
1	12-11-2000	NEW DRAWING	MU34925		KL	MATERIAL			APPD BY DJK
REV	DATE	CHANGE	NAME	PART NAME EXTERNAL CONNECTION DIAGRAM 3 PHASE - 2/1 DELTA - 12 LEADS				DRWG NO A- EE7308BZ-LN	
					PURCHASED		CADD FILE NO.		EE7308BZ-LN



**2100 WASHINGTON ST.
GRAFTON, WI
PH. 262-277-8810**

CERTIFICATION DATA SHEET

CONN. DIAGRAM: A-EE7308BZ-LN

OUTLINE: XG2D1ES33B-1657

WINDING #: L3266016 1

CATALOG : LM27976

MOUNTING: F1/F2 CAPABLE

TYPICAL MOTOR PERFORMANCE DATA

HP	kW	SYNC. RPM	F.L. RPM	FRAME	ENCLOSURE	KVA CODE	DESIGN
30	22.4	1200	1185	326T	DP	K	INV

PH	Hz	VOLTS	AMPS	START TYPE	DUTY	INSL	S.F.	AMB°C
3	60	230/460	76/38	Y START D RUN OR INV	ELEVATOR	F1	1.0	40

FULL LOAD EFF:	90.2	3/4 LOAD EFF:	90.2	1/2 LOAD EFF:	88.5	GTD. EFF		ELEC. TYPE
FULL LOAD PF:	82	3/4 LOAD PF:	77.5	1/2 LOAD PF:	68	88.5		SQ CAGE INV DUTY

F.L. TORQUE	LOCKED ROTOR AMPS	L.R. TORQUE	B.D. TORQUE	F.L. RISE°C
133 LB-FT	660 / 330	300 LB-FT 226 %	410 LB-FT 308 %	100

SOUND PRESSURE @ 3 FT.	SOUND POWER	ROTOR WK^2	MAX. WK^2	SAFE STALL TIME	STARTS / HOUR	APPROX. MOTOR WGT
69 dBA	79 dBA	9 LB-FT^2	- LB-FT^2	- SEC.	-	- LBS.

***** SUPPLEMENTAL INFORMATION *****

DE BRACKET TYPE	ODE BRACKET TYPE	MOUNT TYPE	ORIENTATION	SEVERE DUTY	HAZARDOUS LOCATION	DRIP COVER	SCREENS	PAINT
STANDARD	ENCODER	RIGID	HORIZONTAL	FALSE	NONE	FALSE	NONE	GRAY - LINCOLN

BEARINGS		GREASE	SHAFT TYPE	SPECIAL DE	SPECIAL ODE	SHAFT MATERIAL	FRAME MATERIAL
DE	ODE						
BALL	BALL						
311	309	POLYREX EM	T	NONE	NONE	1045 HOT ROLLED (C-204)	ROLLED STEEL

THERMO-PROTECTORS				THERMISTORS	CONTROL	SPACE HEATERS
THERMOSTATS	PROTECTORS	WDG RTDs	BRG RTDs			
TSTATS (N/C)	NOT	NONE	NONE	NONE	FALSE	NONE VOLTS

*

N

O

T

E

S

INVERTER TORQUE: CONSTANT 1000:1

INV. HP SPEED RANGE: NONE

ENCODER: REGAL SUPPLIED - REGAL MOUNT

DYNAPAR HS35 LINCOLN

MS CONNECTOR 1024 PPR

BRAKE: NONE NONE

NONE P/N NONE

NONE NONE

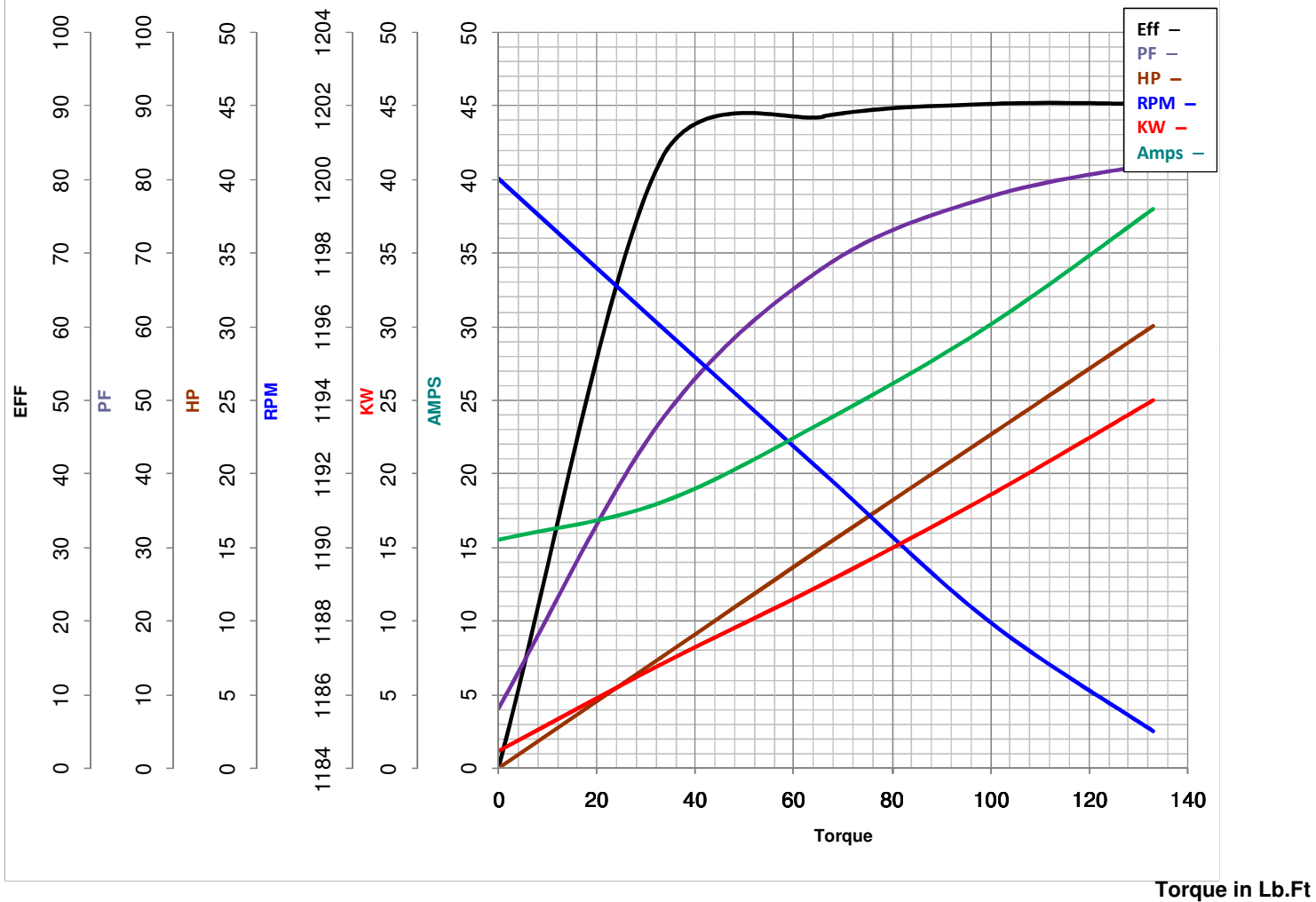
NONE FT-LB NONE V NONE Hz

Model No LM27976Catalog No LM27976BA

LEESON ELECTRIC CORPORATION

TYPICAL PERFORMANCE CURVE for AC MOTOR

 Curve at 460
60
30

 Volts
 HZ
 HP
HP 30.00PHASE 3VOLTS 230/460HZ 60RPM 1185
 FL TORQUE 133 Lb.Ft
 BD TORQUE 410.0 Lb.Ft
 LR TORQUE 300 Lb.Ft

WINDING L3266016-1

 FL AMPS 76/38
 PU TORQUE 285.0 Lb.Ft
 LR AMPS 330
Date 6/4/2018