

# PRODUCT INFORMATION PACKET



Model No: LM26236  
Catalog No: LM26236  
30,3600,DP,284TSC,3/60/230/460

Regal and Leeson are trademarks of Regal Rexnord Corporation or one of its affiliated companies.  
©2023 Regal Rexnord Corporation, All Rights Reserved. MC017097E





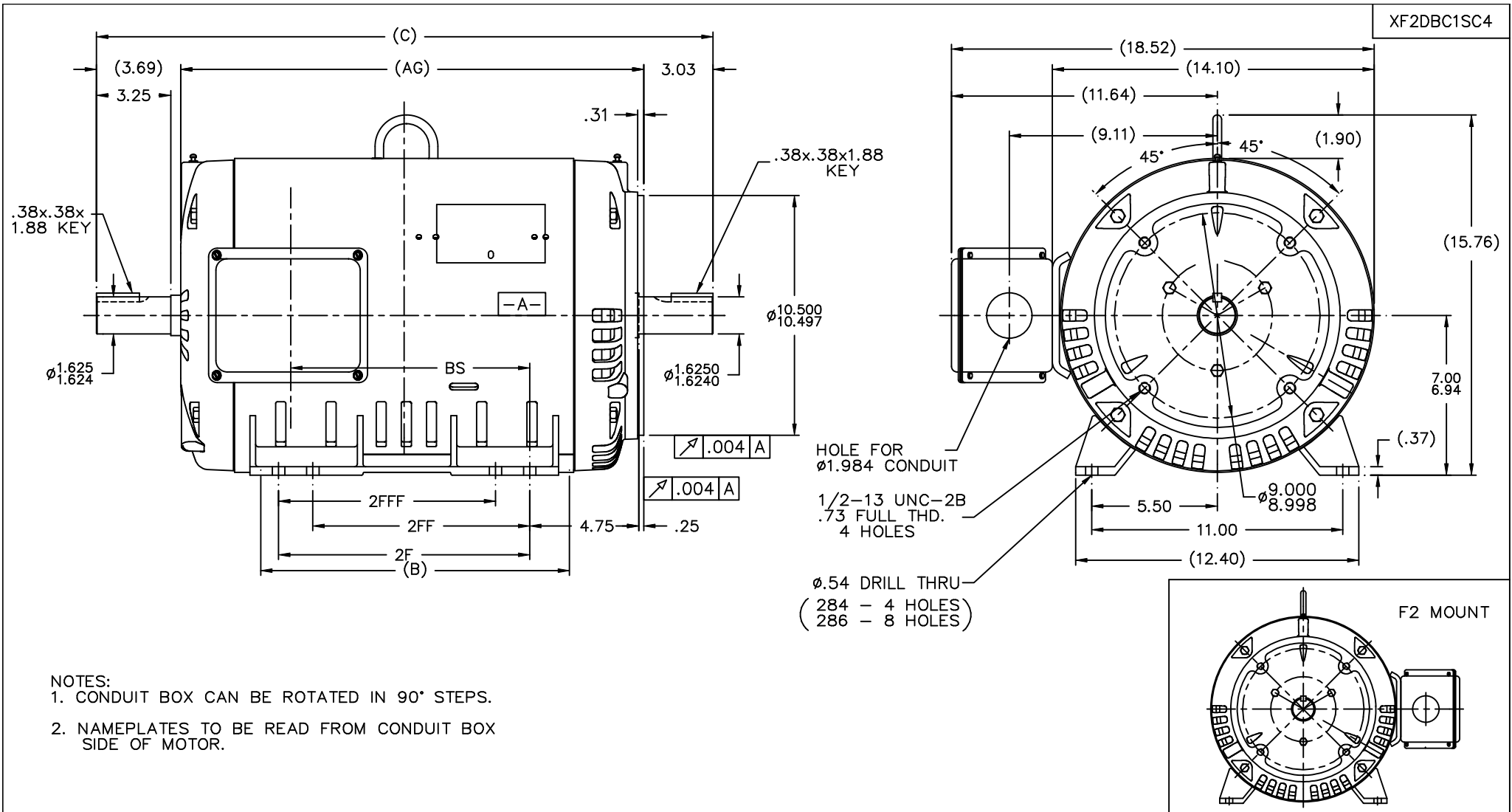
### Nameplate Specifications

Phase	<b>3</b>	Output HP	<b>30 &amp; 30 Hp</b>
Output KW	<b>22.4 &amp; 22.4 kW</b>	Voltage	<b>230/460 &amp; 380-415 V</b>
Speed	<b>3535 &amp; 2920 rpm</b>	Service Factor	<b>1.25 &amp; 1.15</b>
Frame	<b>284TSC</b>	Enclosure	<b>Drip Proof</b>
Thermal Protection	<b>No Protection</b>	Efficiency	<b>93 &amp; 91.7 %</b>
Ambient Temperature	<b>40 °C</b>	Frequency	<b>60 &amp; 50 Hz</b>
Current	<b>68/34 &amp; 41-37.5 A</b>	Power Factor	<b>89.5</b>
Duty	<b>Continuous</b>	Insulation Class	<b>F</b>
Design Code	<b>B</b>	KVA Code	<b>G</b>
Drive End Bearing Size	<b>310</b>	Opp Drive End Bearing Size	<b>209</b>
UL	<b>Recognized</b>	CSA	<b>Y</b>
CE	<b>Y</b>	IP Code	<b>12</b>
Number of Speeds	<b>1</b>		

### Technical Specifications

Electrical Type	<b>Squirrel Cage Induction Run</b>	Starting Method	<b>Wye Start Delta Run</b>
Poles	<b>2</b>	Rotation	<b>Reversible</b>
Resistance Main	<b>.235 Ohms</b>	Mounting	<b>Rigid Base</b>
Motor Orientation	<b>Horizontal</b>	Drive End Bearing	<b>Ball</b>
Opp Drive End Bearing	<b>Ball</b>	Frame Material	<b>Rolled Steel</b>
Shaft Type	<b>TS BOTH ENDS</b>	Assembly/Box Mounting	<b>F1/F2 CAPABLE</b>
Outline Drawing	<b>XF2DBC1SC4-1298</b>	Connection Drawing	<b>A-EE7308AA-LN</b>

This is an uncontrolled document once printed or downloaded and is subject to change without notice. Date Created:06/22/2023



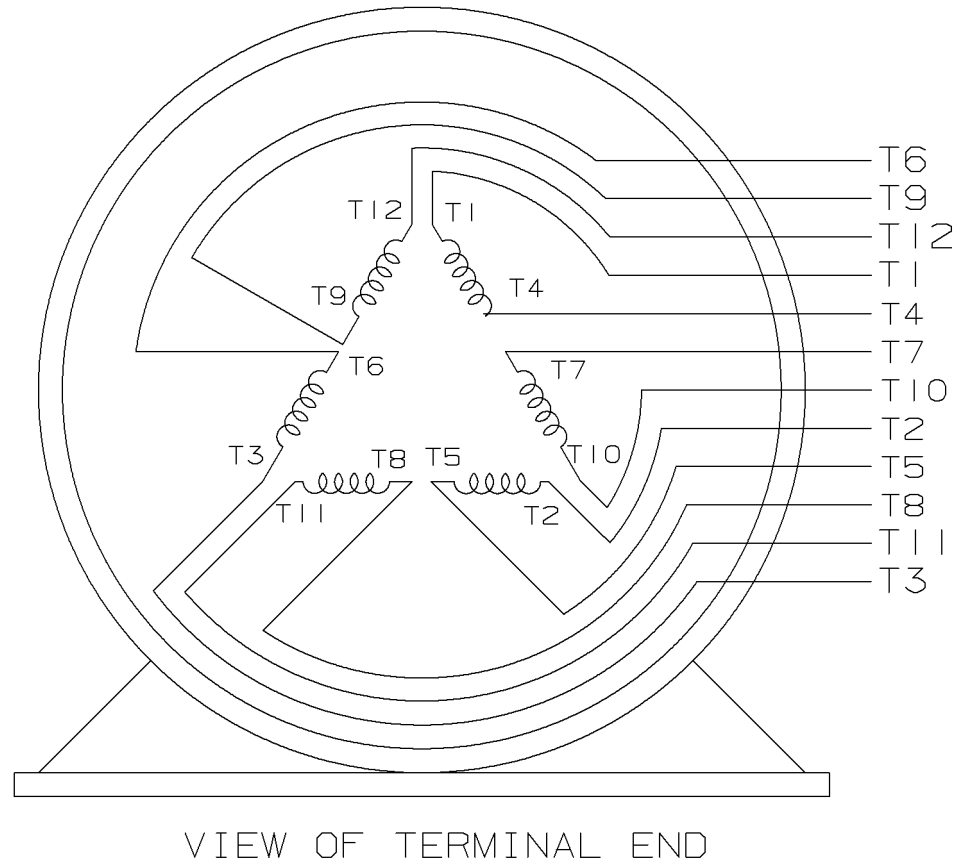
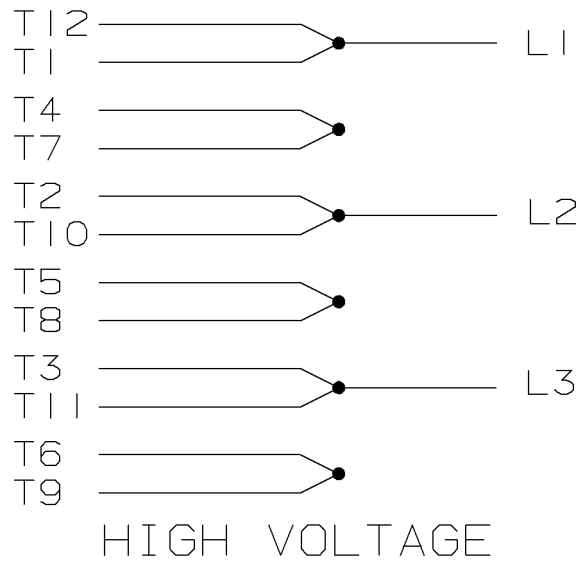
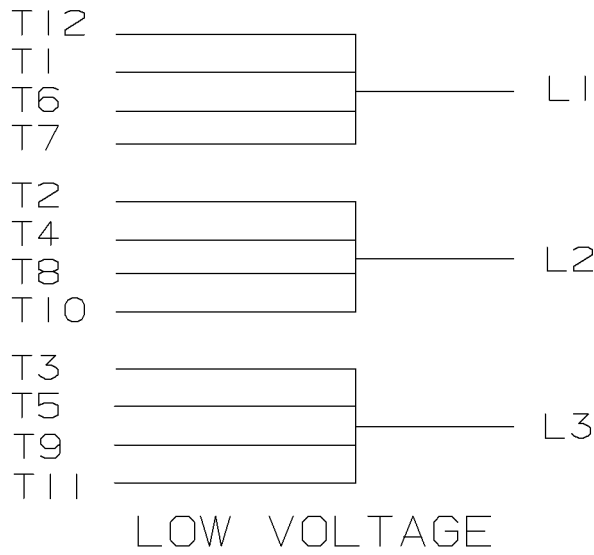
NOTES:  
 1. CONDUIT BOX CAN BE ROTATED IN 90° STEPS.  
 2. NAMEPLATES TO BE READ FROM CONDUIT BOX SIDE OF MOTOR.

									TOLERANCES UNLESS SPECIFIED		Lincoln MOTOR		DRAWN CTO 02-15-2002							
									DEC.	INCHES			CHK	DRS						
									.X	±.1			APPD	HNH						
									.XX	±.03	TITLE OUTLINE NEMA MOTORS		SCALE 1=4							
									.XXX	±.005	280TSC ODP UNDRSZ C'BOX FACING D.E.		REF							
DASH	FRAME	C	AG	B	2F	2FF	2FFF	BS	NO.	REVISION	BY & DATE	CHK	ANG	FINISH	PREV					
1298	284TS	25.50	18.78	12.02	9.50	9.50	9.50	8.47	2	.31 FLANGE WIDTH WAS .30/.24 CN 32015	DRS 01-10-2003	ML	.XXX	±.005						
1448	286TS	27.00	20.28	13.52	11.00	9.50	9.50	10.47	1	NEW DRAWING MU40556	CTO 02-19-2002	HNH	.XXXX	±.0005	MATL					
									THIS DRAWING IN DESIGN AND DETAIL IS OUR PROPERTY AND MUST NOT BE USED EXCEPT IN CONNECTION WITH OUR WORK ALL RIGHTS OF DESIGN AND INVENTION ARE RESERVED THIS IS AN ELECTRONICALLY GENERATED DOCUMENT - DO NOT SCALE THIS PRINT		RFP	ANG	±7'30"	CAD FILE xf2dbc1sc4		SIZE	DRAWING NO.	PAGE	OF	REV.
											DIST	BY			B	XF2DBC1SC4	2			2

ERROR: syntaxerror  
OFFENDING COMMAND: --nostringval--

STACK:

/im  
-savelevel-



					UNLESS OTHERWISE SPECIFIED DIMENSIONS ARE IN INCHES TOL. ON XX±.02 XXX±.005 XXXX±.0005 ANGLES± 7'30"		
2	08-09-1999	RE-ISSUE, ADDED '-' TO PART NUMBER	BLR		MAX. SURFACE ROUGHNESS UNLESS OTHERWISE NOTED		DRAWN BY TRB 07-16-1999
1	06-18-1999	NEW DRAWING	TRB	FINISH		CHKD BY ML 06-18-1999	
				MATERIAL		APPD BY GK 06-18-1999	
REV	DATE	CHANGE	NAME	PART NAME 3 PHASE CONNECTION DIAGRAM 2/1 DELTA - 12 LEADS			DRWG NO A- EE7308AA-LN

PURCHASED

CADD FILE NO.

EE7308AALN

ERROR: undefined  
OFFENDING COMMAND: Pscrip  
  
STACK: