

# PRODUCT INFORMATION PACKET



Model No: LM25312  
Catalog No: LM25312  
40,3600,DP,286TSC,3/60/230/460

Regal and Leeson are trademarks of Regal Rexnord Corporation or one of its affiliated companies.  
©2023 Regal Rexnord Corporation, All Rights Reserved. MC017097E





### Nameplate Specifications

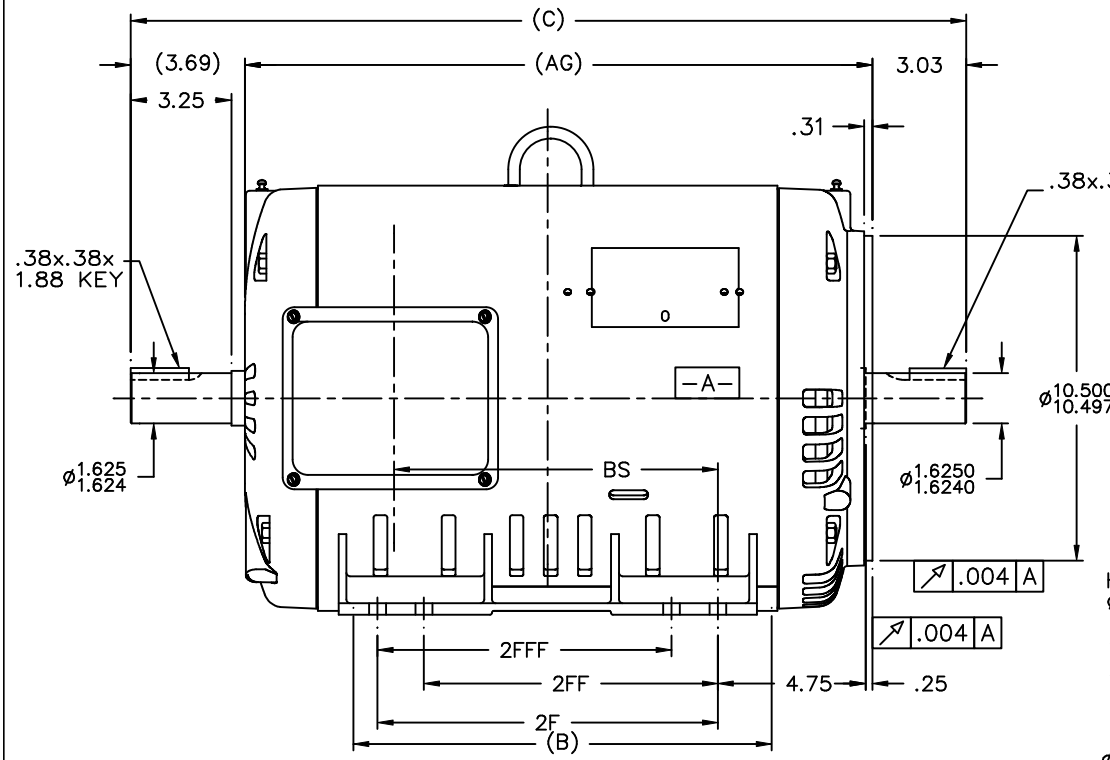
Phase	<b>3</b>	Output HP	<b>40 &amp; 40 Hp</b>
Output KW	<b>29.8 &amp; 29.8 kW</b>	Voltage	<b>230/460 &amp; 190-208/380-415 V</b>
Speed	<b>3540 &amp; 2925 rpm</b>	Service Factor	<b>1.25 &amp; 1.15</b>
Frame	<b>286TSC</b>	Enclosure	<b>Drip Proof</b>
Thermal Protection	<b>No Protection</b>	Efficiency	<b>93.6 &amp; 91.7 %</b>
Ambient Temperature	<b>40 °C</b>	Frequency	<b>60 &amp; 50 Hz</b>
Current	<b>90/45 &amp; 111-101/55.5-50.5 A</b>	Power Factor	<b>89</b>
Duty	<b>Continuous</b>	Insulation Class	<b>F</b>
Design Code	<b>B</b>	KVA Code	<b>G</b>
Drive End Bearing Size	<b>310</b>	Opp Drive End Bearing Size	<b>209</b>
UL	<b>Recognized</b>	CSA	<b>Y</b>
CE	<b>Y</b>	IP Code	<b>22</b>
Number of Speeds	<b>1</b>		

### Technical Specifications

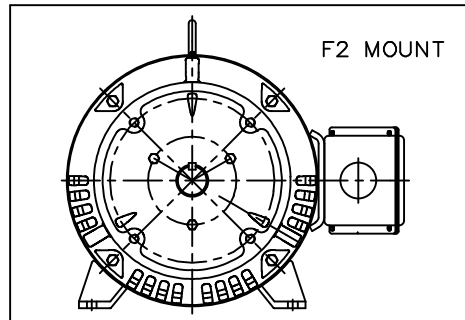
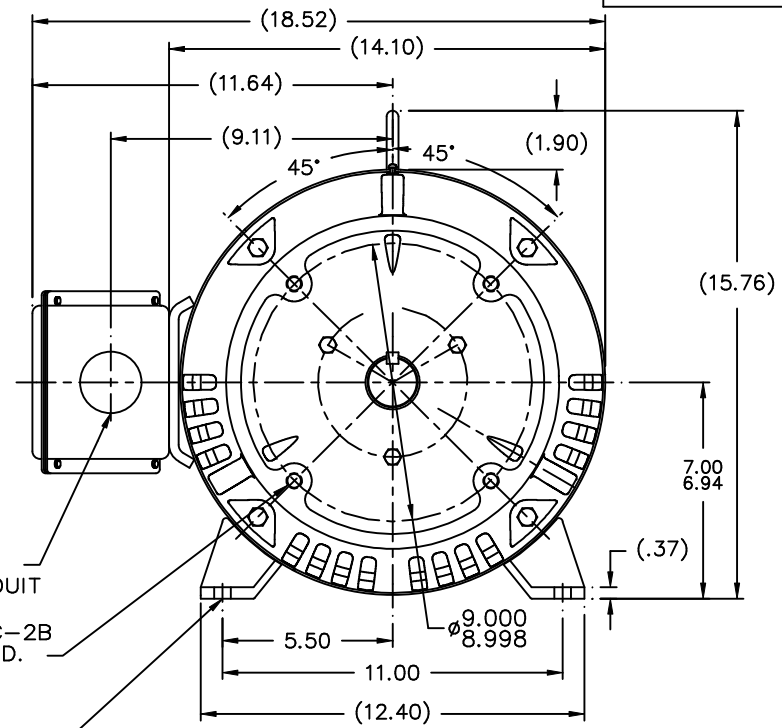
Electrical Type	<b>Squirrel Cage Induction Run</b>	Starting Method	<b>Wye Start Delta Run</b>
Poles	<b>2</b>	Rotation	<b>Reversible</b>
Resistance Main	<b>.182 Ohms</b>	Mounting	<b>Rigid Base</b>
Motor Orientation	<b>Horizontal</b>	Drive End Bearing	<b>Ball</b>
Opp Drive End Bearing	<b>Ball</b>	Frame Material	<b>Rolled Steel</b>
Shaft Type	<b>TS BOTH ENDS</b>	Assembly/Box Mounting	<b>F1/F2 CAPABLE</b>
Outline Drawing	<b>XF2DBC1SC4-1448</b>	Connection Drawing	<b>A-EE7308AA-LN</b>

This is an uncontrolled document once printed or downloaded and is subject to change without notice. Date Created:06/23/2023

XF2DBC1SC4



HOLE FOR  
 $\phi 1.984$  CONDUIT  
 1/2-13 UNC-2B  
 .73 FULL THD.  
 4 HOLES  
 $\phi .54$  DRILL THRU  
 (284 - 4 HOLES)  
 (286 - 8 HOLES)



NOTES:  
 1. CONDUIT BOX CAN BE ROTATED IN 90° STEPS.  
 2. NAMEPLATES TO BE READ FROM CONDUIT BOX SIDE OF MOTOR.

DASH	FRAME	C	AG	B	2F	2FF	2FFF	BS
1298	284TS	25.50	18.78	12.02	9.50			8.47
1448	286TS	27.00	20.28	13.52	11.00	9.50	9.50	10.47

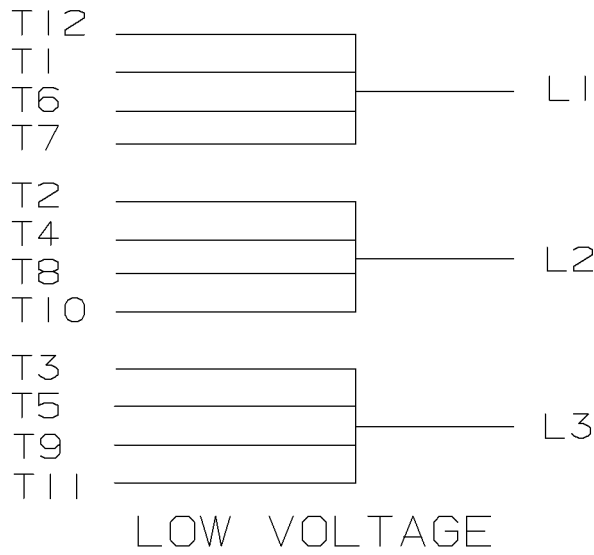
		TOLERANCES UNLESS SPECIFIED		Lincoln MOTOR		DRAWN CTO 02-15-2002	
		DEC.	INCHES			CHK	DRS 02-19-2002
		.X	±.1			APPD	HNH 02-19-2002
		.XX	±.03	TITLE OUTLINE NEMA MOTORS		SCALE 1=4	
2	.31 FLANGE WIDTH WAS .30/.24 CN 32015	DRS	01-10-2003	ML	.XXX ±.005	280TSC ODP UNDRSZ C'BOX FACING D.E.	
1	NEW DRAWING MU40556	CTO	02-19-2002	HNH	.XXXX ±.0005	REF	
NO.	REVISION	BY & DATE		CHK	ANG ±7'30"	FINISH	
		RFP		CAD FILE xf2dbc1sc4		SIZE	DRAWING NO. PAGE OF REV.
		DIST	BY			B	XF2DBC1SC4 2

THIS DRAWING IN DESIGN AND DETAIL IS OUR PROPERTY AND MUST NOT BE USED EXCEPT IN CONNECTION WITH OUR WORK ALL RIGHTS OF DESIGN AND INVENTION ARE RESERVED THIS IS AN ELECTRONICALLY GENERATED DOCUMENT - DO NOT SCALE THIS PRINT

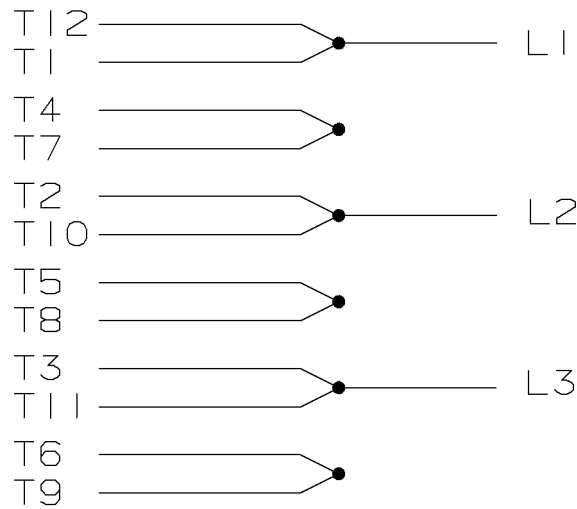
ERROR: syntaxerror  
OFFENDING COMMAND: --nostringval--

STACK:

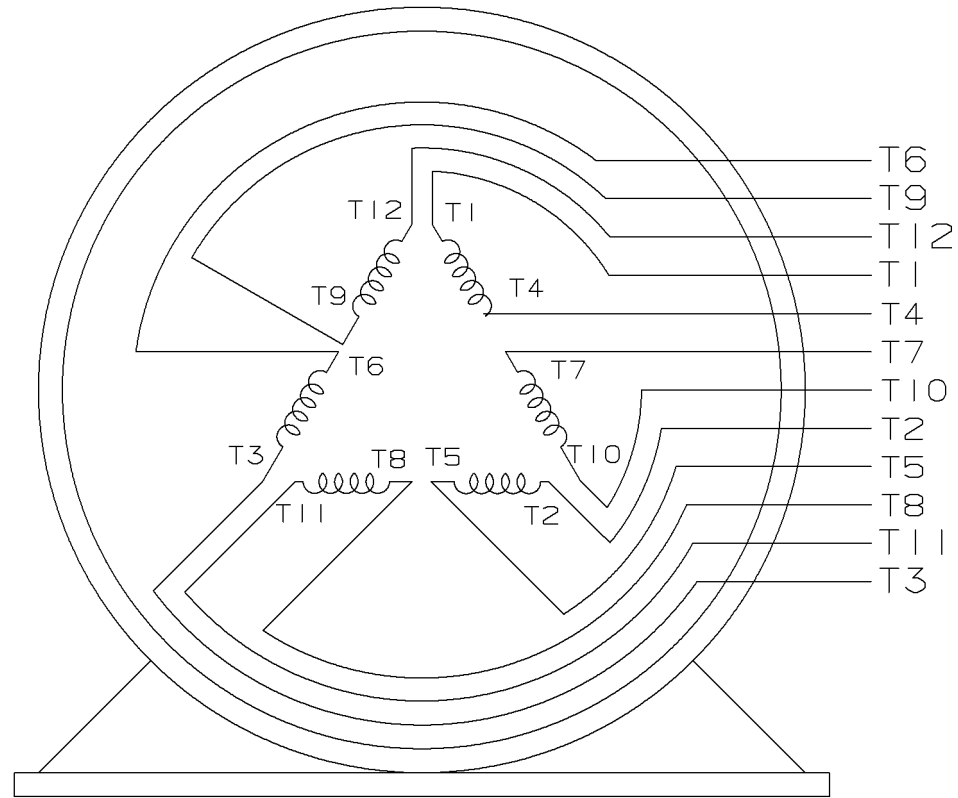
/im  
-savelevel-



LOW VOLTAGE



HIGH VOLTAGE



VIEW OF TERMINAL END

					✓ UNLESS OTHERWISE SPECIFIED DIMENSIONS ARE IN INCHES TOL. ON XX±.02 XXX±.005 XXXX±.0005 ANGLES± 7°30"				
2	08-09-1999	RE-ISSUE, ADDED '-' TO PART NUMBER	BLR		MAX. SURFACE ROUGHNESS UNLESS OTHERWISE NOTED		DRAWN BY	TRB	07-16-1999
1	06-18-1999	NEW DRAWING	TRB	FINISH		CHKD BY	ML	06-18-1999	
				MATERIAL		APPD BY	GK	06-18-1999	
REV	DATE	CHANGE	NAME	PART NAME 3 PHASE CONNECTION DIAGRAM 2/1 DELTA - 12 LEADS				DRWG NO A- EE7308AA-LN	

PURCHASED

CADD FILE NO.

EE7308AALN

ERROR: undefined  
OFFENDING COMMAND: Pscrip  
  
STACK: