

PRODUCT INFORMATION PACKET

Model No: LM25088
Catalog No: LM25088
OBSOLETE - 5,1800,DP,184TC,3/60/575

Regal and are trademarks of Regal Rexnord Corporation or one of its affiliated companies.
©2022 Regal Rexnord Corporation, All Rights Reserved. MC017097E



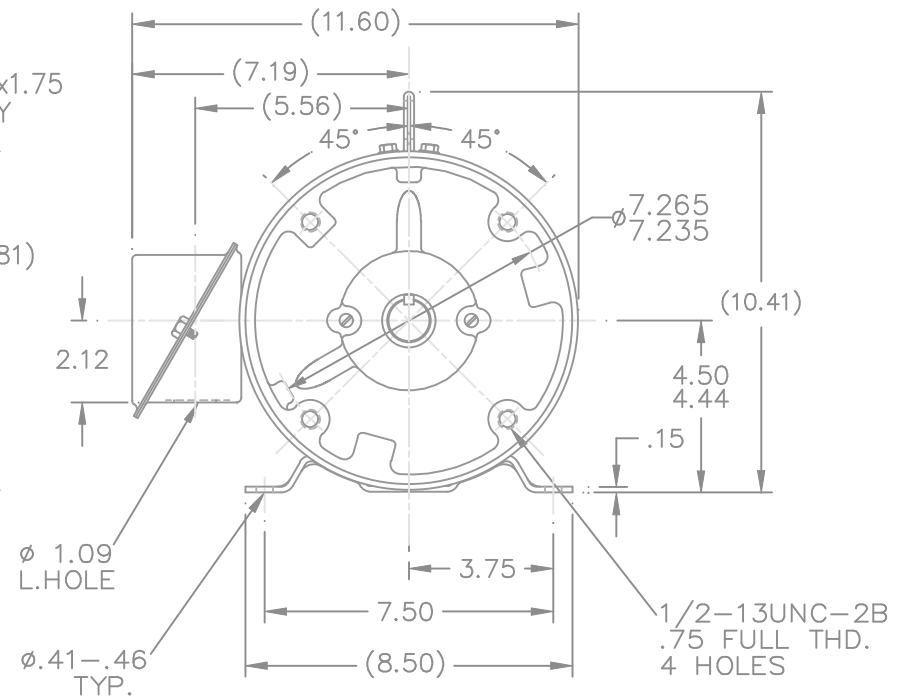
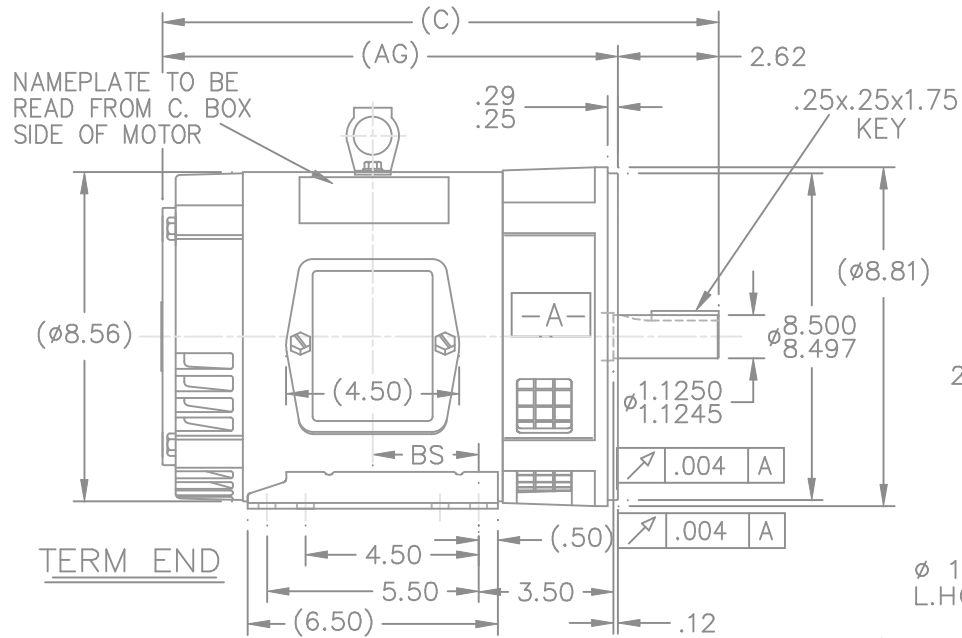
Nameplate Specifications

Output HP	5 Hp	Output KW	3.7 kW
Frequency	60 Hz	Voltage	575 V
Current	5.2 A	Speed	1745 rpm
Service Factor	1.25	Phase	3
Efficiency	87.5 %	Power Factor	81
Duty	Continuous	Insulation Class	F
Design Code	B	KVA Code	J
Frame	184TC	Enclosure	Drip Proof
Thermal Protection	No Protection	Ambient Temperature	40 °C
Drive End Bearing Size	207	Opp Drive End Bearing Size	205
UL	Recognized	CSA	Y
CE	Y	IP Code	22
Number of Speeds	1		

Technical Specifications

Electrical Type	Squirrel Cage Induction Run	Starting Method	Across The Line
Poles	4	Rotation	Reversible
Resistance Main	3.2 Ohms	Mounting	Rigid Base
Motor Orientation	Horizontal	Drive End Bearing	Ball
Opp Drive End Bearing	Ball	Frame Material	Rolled Steel
Shaft Type	T	Assembly/Box Mounting	F1 ONLY
Connection Drawing	A-EE7300-LN	Outline Drawing	A-SS63832LN-725

This is an uncontrolled document once printed or downloaded and is subject to change without notice. Date Created:07/18/2022



NOTES:

1. BOX CAN BE ROTATED IN 90° STEPS.
2. BOX CAN BE MOUNTED ON OPP. SIDE BY REMOVING BRACKETS AND TURNING FRAME 180°.

DASH	FR.	C	AG	BS	MOUNTING	DASH	FR.	C	AG	BS	MOUNTING
575	182T	13.46	10.84	2.25	F1 OR F2	775	184T	15.46	12.84	3.25	F2 ONLY
675	182T	14.46	11.84	2.75	F1 ONLY	825	184T	15.96	13.34	3.50	F1 ONLY
675	184T	14.46	11.84	2.75	F1 OR F2	825	184T	15.96	13.34	3.50	F2 ONLY
725	182T	14.96	11.34	3.00	F1 ONLY	875	184T	16.46	13.84	3.75	F1 ONLY
725	184T	14.96	11.34	3.00	F1 ONLY	875	184T	16.46	13.84	3.75	F2 ONLY
725	184T	14.96	11.34	3.00	F2 ONLY	925	184T	16.96	14.34	4.00	F1 ONLY
775	184T	15.46	12.84	3.25	F1 ONLY						

			TOLERANCES UNLESS SPECIFIED			
NO.	REVISION	BY & DATE	CHK	ANG	±	°
5	REVISED DASH TABLE AND ADDED 925	CAV 04-16-2002	PH	DEC.	INCHES	
4	ADDED LIFT LUG MU 38676	NJS 08-29-2001		.X	±.1	
3	"TOL. ON XX ± .03 WAS .02 CN 29200-1624	TJB 03-26-2001		.XX	±.03	
2	REVISED DASHES TO STANDARD FRAME CN29200-82	CAV 01-27-2000		.XXX	±.005	
1	NEW DRAWING	TRB 07-20-1999		.XXXX	±.0005	



DRAWN	TRB	07-15-1999
CHK	ML	07-20-1999
APPD	GK	07-20-1999
SCALE	1=5	
REF		
FMF		
PREV		

THIS DRAWING IN DESIGN AND DETAIL IS OUR PROPERTY AND MUST NOT BE USED EXCEPT IN CONNECTION WITH OUR WORK ALL RIGHTS OF DESIGN AND INVENTION ARE RESERVED
THIS IS AN ELECTRONICALLY GENERATED DOCUMENT - DO NOT SCALE THIS PRINT

RFP
DIST LB

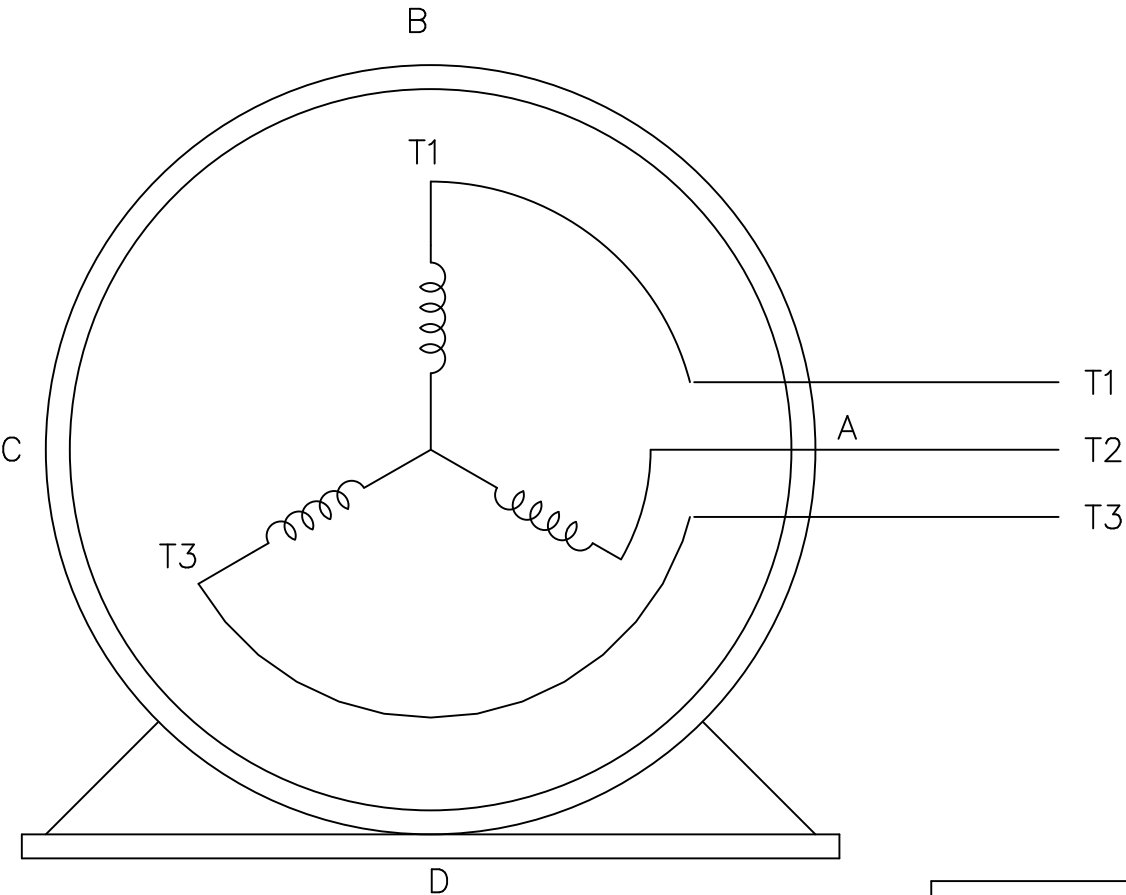
CAD FILE ss63832ln

SIZE A DRAWING NO. SS63832LN PAGE OF REV. 5

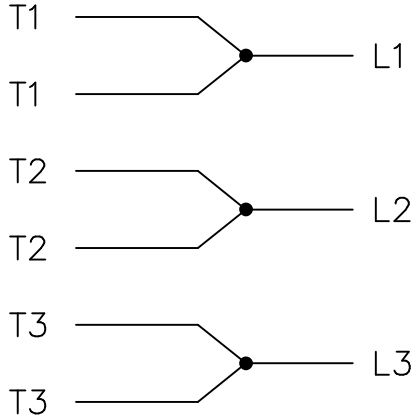
THREE PHASE – SINGLE VOLTAGE
MOTOR – CONDUIT BOX @ 'A'

EE7300-LN

TO REVERSE ROTATION:
INTERCHANGE ANY TWO LINE
LEAD CONNECTIONS




IF MOTOR HAS
6 LEADS



A-9806 DECAL

OPTIONAL CORD
CONNECTION

L1 WHITE
L2 RED
L3 BLACK

				TOLERANCES UNLESS SPECIFIED			DRAWN BLR 08-13-1999			
				DEC.	INCHES		CHK ML 08-13-1999			
				.X	±.1		APPD GK 08-13-1999			
				.XX	±.02		SCALE 1=1			
2	ADDED OPTIONAL CORD CONNECTION PER MU47226	CTO 03-31-2004	PJB	.XXX	±.005	TITLE CONNECTION DIAGRAM SINGLE VOLT – 3Ø MOTOR			REF	
1	NEW DRAWING	CTO 08-13-1999		.XXXX	±.0005	MAT'L.			FMF	
NO.	REVISION	BY & DATE	CHK	ANG	±7'30"	FINISH			PREV	
THIS DRAWING IN DESIGN AND DETAIL IS OUR PROPERTY AND MUST NOT BE USED EXCEPT IN CONNECTION WITH OUR WORK ALL RIGHTS OF DESIGN AND INVENTION ARE RESERVED THIS IS AN ELECTRONICALLY GENERATED DOCUMENT – DO NOT SCALE THIS PRINT				RFP		CAD FILE EE7300_LN		SIZE	DRAWING NO. PAGE OF	REV.
				DIST WP				A	EE7300-LN	2