

# PRODUCT INFORMATION PACKET

Model No: LM24988

Catalog No: LM24988

SOLETE - REPLACED BY LM32855 - 10HP..1800RPM.215TC.TEFC.230/460V.3PH.6-HZ.CONT.NOT.40C.1.15SF.C-F  
CE..

Regal and are trademarks of Regal Rexnord Corporation or one of its affiliated companies.  
©2022 Regal Rexnord Corporation, All Rights Reserved. MC017097E



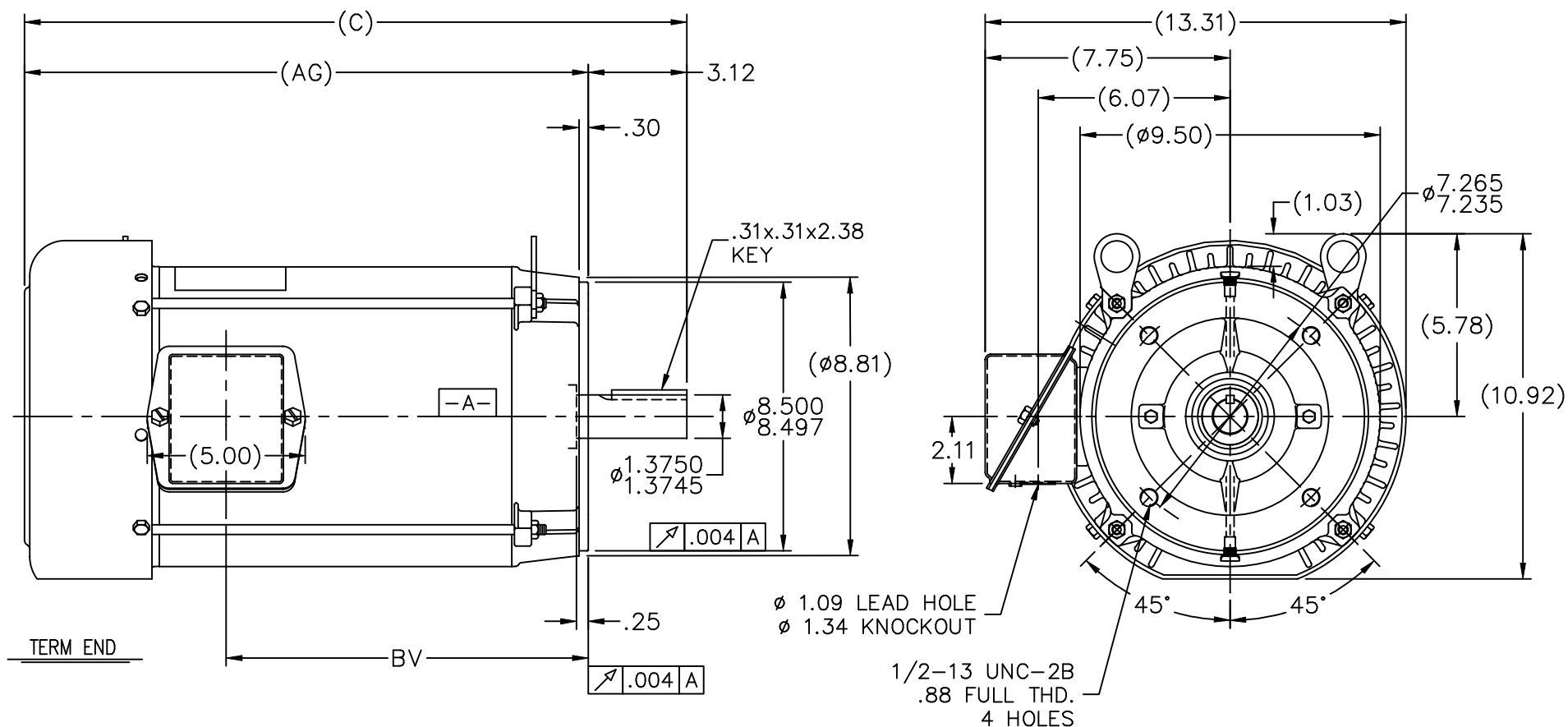
### Nameplate Specifications

Output HP	10 Hp	Output KW	7.5 kW
Frequency	60 Hz	Voltage	208-230/460 V
Current	28.0-25.0/12.5 A	Speed	1740 rpm
Service Factor	1.15	Phase	3
Efficiency	88.5 %	Power Factor	83.5
Duty	Continuous	Insulation Class	F
Design Code	B	KVA Code	H
Frame	215TC	Enclosure	Totally Enclosed Fan Cooled
Thermal Protection	No Protection	Ambient Temperature	40 °C
Drive End Bearing Size	309	Opp Drive End Bearing Size	206
UL	Recognized	CSA	Y
CE	Y	IP Code	43
Number of Speeds	1		

### Technical Specifications

Electrical Type	Squirrel Cage Induction Run	Starting Method	Across The Line
Poles	4	Rotation	Reversible
Resistance Main	1.2 Ohms	Mounting	Round
Motor Orientation	Horizontal	Drive End Bearing	Ball
Opp Drive End Bearing	Ball	Frame Material	Rolled Steel
Shaft Type	T	Assembly/Box Mounting	F1/F2 CAPABLE
Connection Drawing	A-EE7308-LN	Outline Drawing	A-SS86634LN-1115


This is an uncontrolled document once printed or downloaded and is subject to change without notice. Date Created:07/18/2022



DASH	FR.	C	AG	BV	MOUNTING
965	213T	19.46	16.34	9.96	
1115	213/15T	20.96	17.84	11.46	
1240	213/15T	22.21	19.09	12.71	

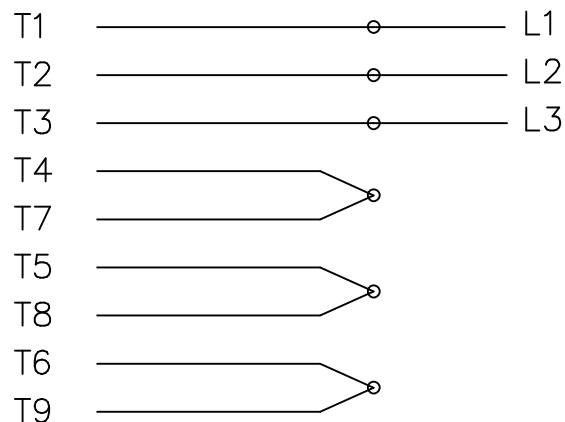
## NOTES:

- NAMEPLATE TO BE READ FROM C'BOX SIDE OF MOTOR.
- BOX CAN BE MOUNTED IN 90° STEPS.

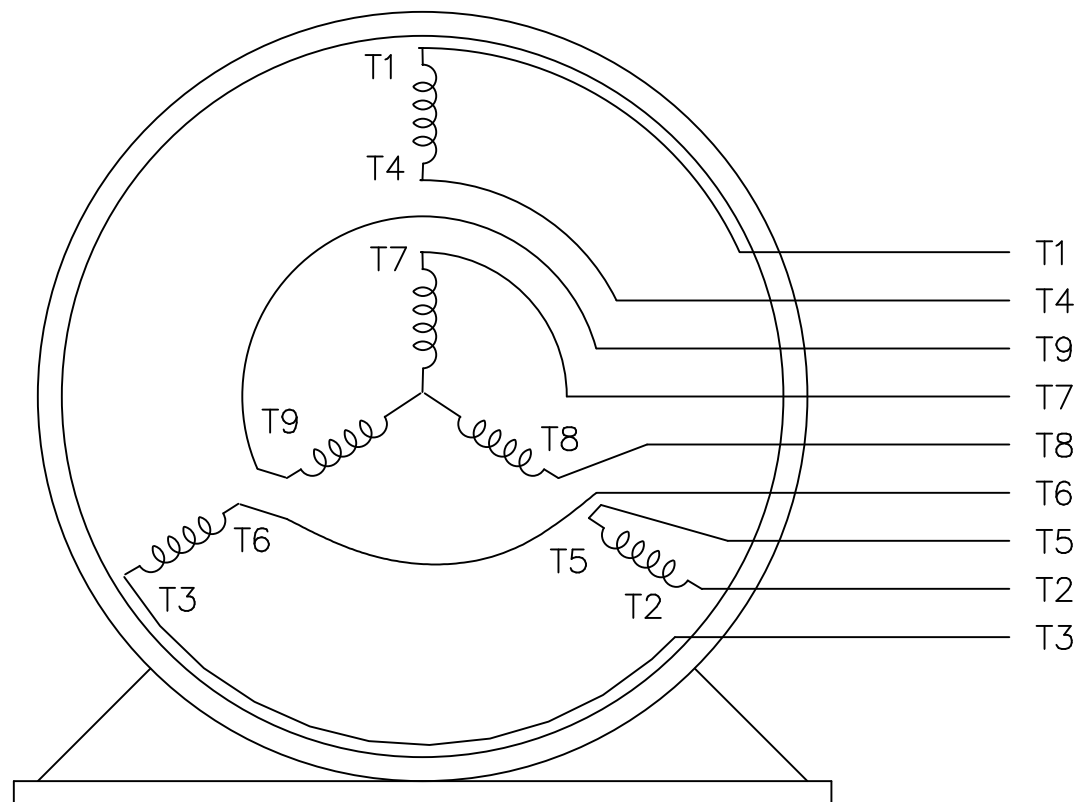
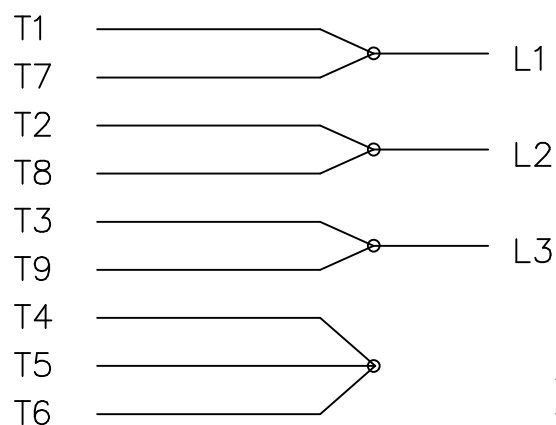
				TOLERANCES UNLESS SPECIFIED			DRAWN TJB 12-16-1999				
				DEC.	INCHES		CHK	ML 12-17-1999			
				.X	±.1		APPD	GK 12-17-1999			
				.XX	±.03		TITLE OUTLINE 210T FR. -BB -TS -TEFC -R/S -C' FACE			SCALE	1=5
				.XXX	±.005					REF	
1	NEW DRAWING		TJB 12-17-1999		.XXXX	±.0005	MAT'L.			FMF	
NO.	REVISION		BY & DATE	CHK	ANG	±7'30"	FINISH			PREV	
THIS DRAWING IN DESIGN AND DETAIL IS OUR PROPERTY AND MUST NOT BE USED EXCEPT IN CONNECTION WITH OUR WORK ALL RIGHTS OF DESIGN AND INVENTION ARE RESERVED THIS IS AN ELECTRONICALLY GENERATED DOCUMENT - DO NOT SCALE THIS PRINT				RFP 12-17-1999		CAD FILE ss86634LN		SIZE	DRAWING NO. PAGE OF		REV.
				DIST LB				A	SS86634LN		1

THREE PHASE  
DUAL VOLTAGE MOTOR

## HIGH VOLTAGE




## LOW VOLTAGE

REF.  
WINDING DIAGRAM

T8Y, T2Y, T2BL, T4BX, T2EC, T2G  
T6BZ, T2B, T6BL, T4AV, T6B, T4B

OPTIONAL CORD  
CONNECTION

L1 — WHITE  
L2 — RED  
L3 — BLACK

				TOLERANCES UNLESS SPECIFIED			DRAWN BLR 06/11/1999			
				DEC.	INCHES		CHK ML 06/18/1999			
				.X	±.1		APPD GK 06/18/1999			
3	ADDED THE OPTIONAL CORD CONNECTION MU46318	RDH 04/24/2003	DRS	.XX	±.02	TITLE CONNECTION DIAGRAM 3ø – DUAL VOLTAGE MOTOR	SCALE 1=1			
2	RE-ISSUE, ADDED '-' TO PART NUMBER	BLR 08/09/1999	GK	.XXX	±.005		REF			
1	NEW DRAWING	BLR 06/18/1999	GK	.XXXX	±.0005	MAT'L.	FMF			
NO.	REVISION	BY & DATE	CHK	ANG	±7'30"	FINISH	PREV			
THIS DRAWING IN DESIGN AND DETAIL IS OUR PROPERTY AND MUST NOT BE USED EXCEPT IN CONNECTION WITH OUR WORK ALL RIGHTS OF DESIGN AND INVENTION ARE RESERVED THIS IS AN ELECTRONICALLY GENERATED DOCUMENT – DO NOT SCALE THIS PRINT			RFP		CAD FILE EE7308LN		SIZE	DRAWING NO.	PAGE OF	REV.
			DIST WP				A	EE7308-LN		3