

PRODUCT INFORMATION PACKET

Model No: LM24804

Catalog No: LM24804

Agricultural Motor, 7.50 HP, 1 Ph, 60 Hz, 230 V, 1800 RPM, 215TZ Frame, TEFC



Regal and are trademarks of Regal Rexnord Corporation or one of its affiliated companies.
©2022 Regal Rexnord Corporation, All Rights Reserved. MC017097E

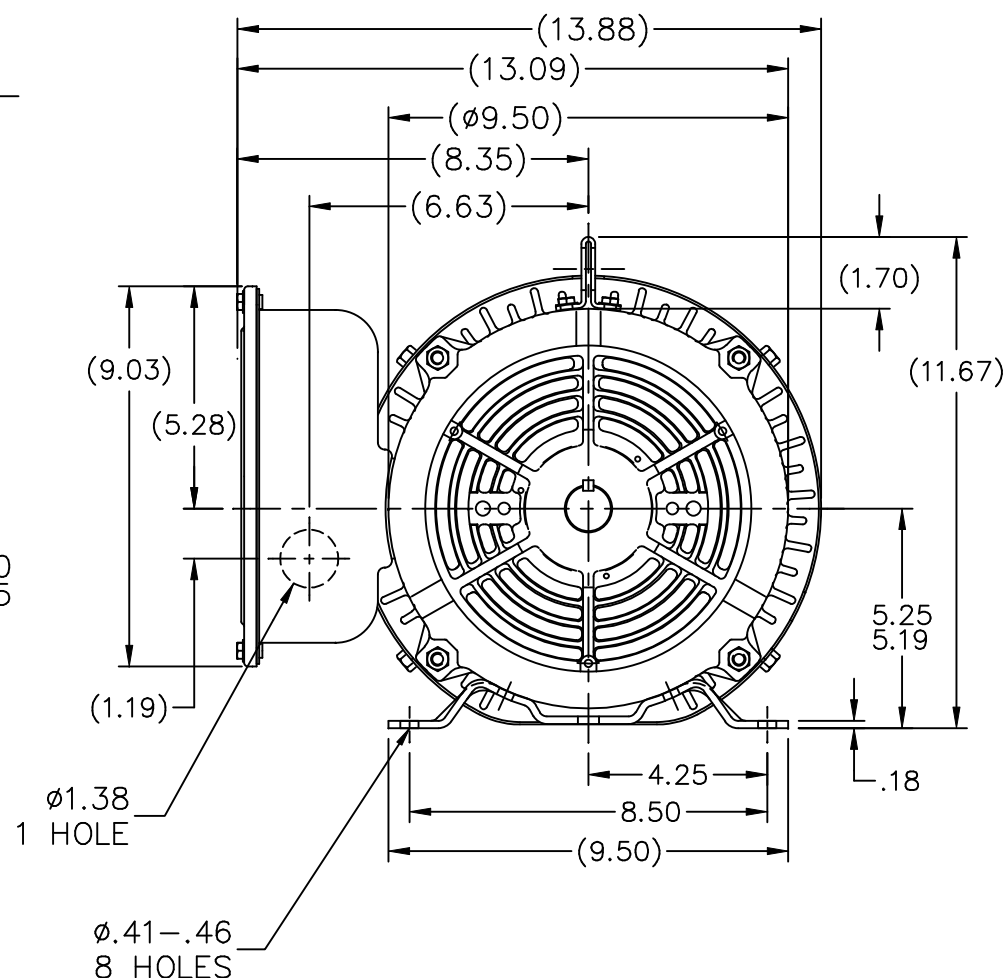
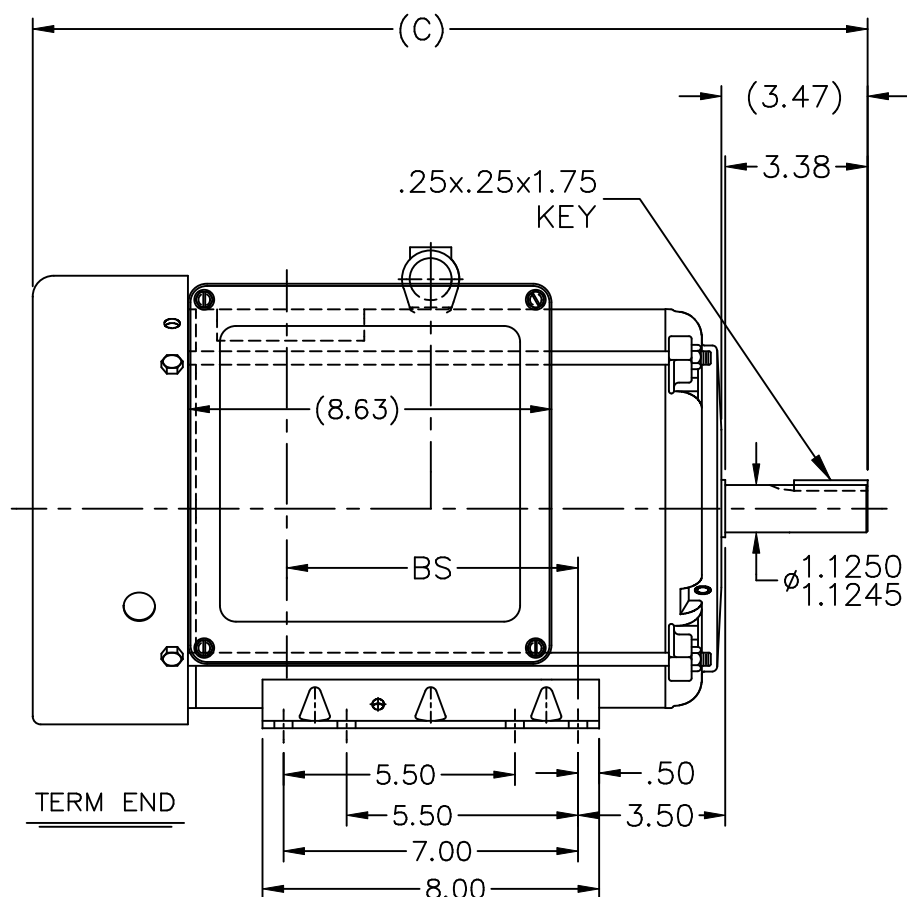
Nameplate Specifications

Output HP	7.50 Hp	Output KW	5.6 kW
Frequency	60 Hz	Voltage	230 V
Current	30.5 A	Speed	1750 rpm
Service Factor	1.15	Phase	1
Efficiency	85.5 %	Power Factor	95
Duty	Continuous	Insulation Class	F
Design Code	L	KVA Code	K
Frame	215TZ	Enclosure	Totally Enclosed Fan Cooled
Thermal Protection	Manual	Ambient Temperature	40 °C
Drive End Bearing Size	307	Opp Drive End Bearing Size	206
UL	Recognized (Not Protector)	CSA	Y
CE	Y	IP Code	43
Number of Speeds	1		

Technical Specifications

Electrical Type	Capacitor Start Capacitor Run	Starting Method	Across The Line
Poles	4	Rotation	Selective Counterclockwise
Resistance Main	.215 Ohms	Mounting	Rigid Base
Motor Orientation	Horizontal	Drive End Bearing	Ball
Opp Drive End Bearing	Ball	Frame Material	Rolled Steel
Shaft Type	Single Special Extension	Overall Length	21.09 in
Frame Length	12.40 in	Shaft Diameter	1.125 in
Shaft Extension	3.38 in	Assembly/Box Mounting	F1 ONLY
Connection Drawing	A-EE9048RC-LN	Outline Drawing	A-SS86671LN-1240


This is an uncontrolled document once printed or downloaded and is subject to change without notice. Date Created:09/07/2022



DASH	FRAME	C	BS
965	213T	18.34	5.42
1115	213/15T	19.84	6.92
1240	215T	21.09	8.17

NOTES:

1. NAMEPLATE TO BE READ FROM C'BOX SIDE OF MOTOR.
2. DASH 965 TO BE READ FROM OPPOSITE SHAFT END.

				TOLERANCES UNLESS SPECIFIED			DRAWN BJW 11-02-1999			
				DEC.	INCHES		CHK ML 11-03-1999			
				.X	±.1		APPD TB 11-04-1999			
				.XX	±.03		SCALE 7=32			
6	REVISE CONDUIT BOX PER ISAAC#07-1837	RWR 12-21-2007	ML	.XXX	±.005	TITLE OUTLINE – STEEL C’ BOX 210 FR. – BB – TS – TEFC 1ø			REF A-SS8871	
1	NEW DRAWING	MH 04-18-1997		.XXXX	±.0005	MAT’L.			FMF	
NO.	REVISION	BY & DATE	CHK	ANG	± 7’30”	FINISH			PREV	
THIS DRAWING IN DESIGN AND DETAIL IS OUR PROPERTY AND MUST NOT BE USED EXCEPT IN CONNECTION WITH OUR WORK ALL RIGHTS OF DESIGN AND INVENTION ARE RESERVED THIS IS AN ELECTRONICALLY GENERATED DOCUMENT – DO NOT SCALE THIS PRINT				RFP 11-04-1999		CAD FILE SS86671LN		SIZE	DRAWING NO. PAGE OF	REV.
				DIST LB				A	SS86671LN	

C.W. ROTATION

P1 ——— L1

P2 ———

T5 ———

T4 ——— L2

T8 ———

C.C.W. ROTATION

P1 ——— L1

P2 ———

T8 ———

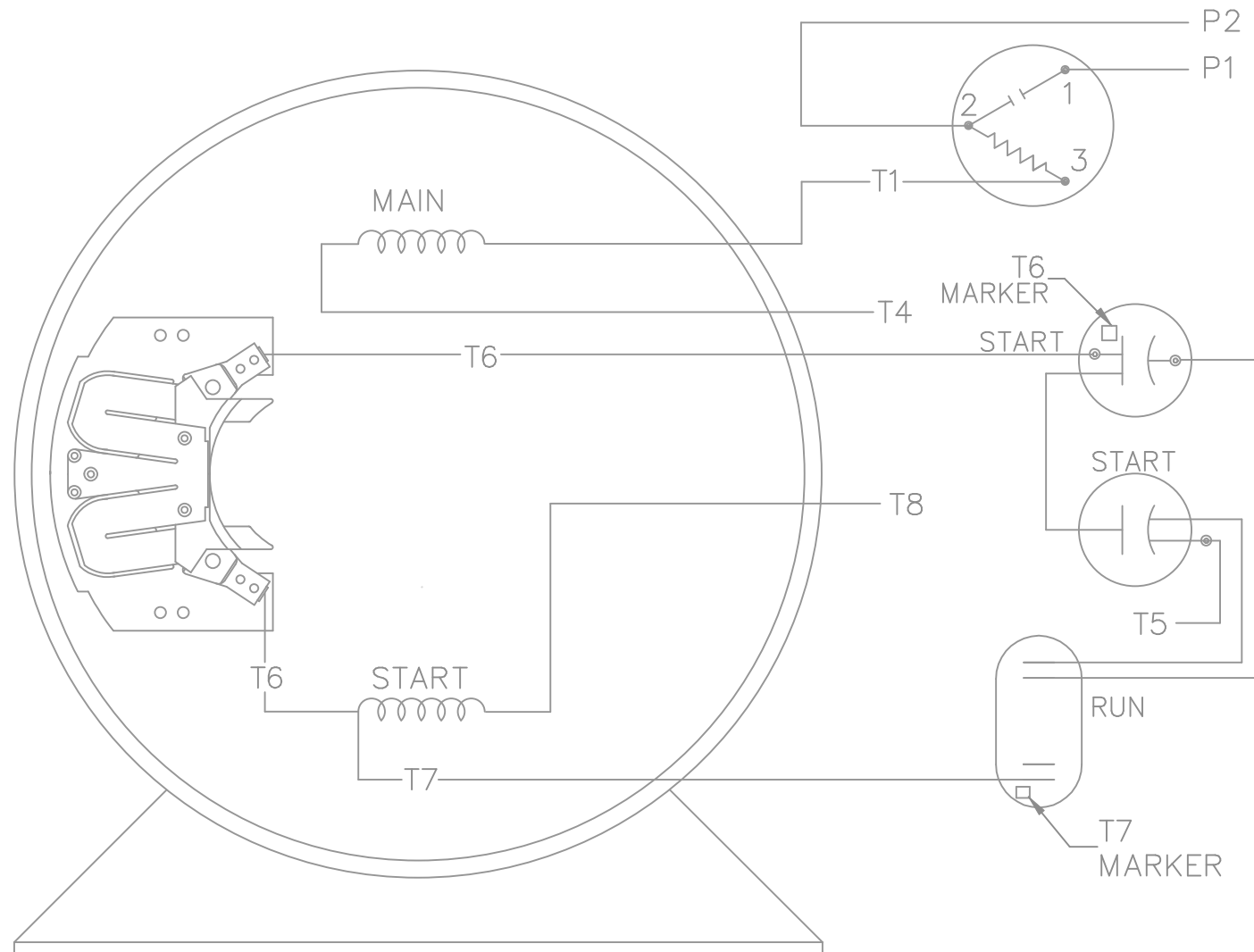
T4 ——— L2

T5 ———


SINGLE VOLTAGE
CAPACITOR START
CAPACITOR RUN
REVERSIBLE

CONNECT:
START CAPACITORS IN PARALLEL

EE9048RC-LN



VIEW OF TERMINAL END

				TOLERANCES UNLESS SPECIFIED			DRAWN MK 08-13-2007			
				DEC.	INCHES		CHK MB 08-15-2007			
				.X	±.1		APPD MB 08-15-2007			
				.XX	±.02		SCALE 1=1			
				.XXX	±.005		REF 213M1029CD			
1	CORRECT THE CONNECTIONS PER 08-1578	RWR 04-29-2008	ML	.XXXX	±.0005	TITLE CONNECTION DIAGRAM MAT'L. 180-210 SWITCH FINISH	FMF 213M1029			
NO.	REVISION	BY & DATE	CHK	ANG	±7'30"		PREV			
				RFP	08-15-2007		SIZE A			
				DIST		CAD FILE EE9048RC-LN	DRAWING NO. EE9048RC-LN			
							PAGE 1 OF 1			
							REV. 1			

THIS DRAWING IN DESIGN AND DETAIL IS OUR PROPERTY AND MUST NOT BE USED EXCEPT
IN CONNECTION WITH OUR WORK ALL RIGHTS OF DESIGN AND INVENTION ARE RESERVED
THIS IS AN ELECTRONICALLY GENERATED DOCUMENT - DO NOT SCALE THIS PRINT

9/30/2008 6:27:30 AM

Model No LM24804Catalog No LM24804DD

LEESON ELECTRIC CORPORATION

TYPICAL PERFORMANCE CURVE for AC MOTOR

Curve at

230

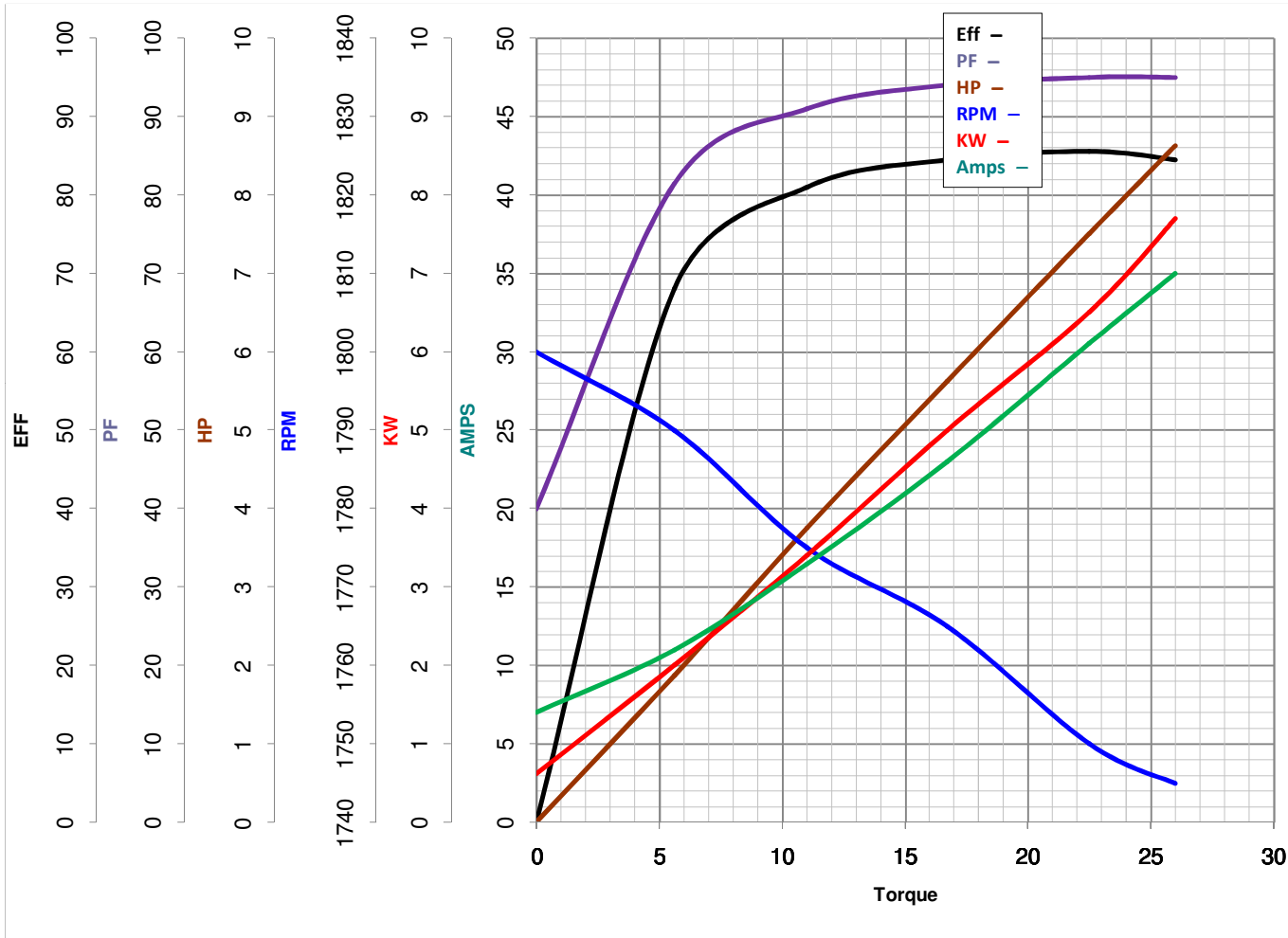
Volts

HP 7.50PHASE 160

HZ

7.5

HP

VOLTS 230HZ 60RPM 1750

Torque in Lb.Ft

FL TORQUE 22.5 Lb.FtBD TORQUE 58.5 Lb.FtLR TORQUE 86.5 Lb.Ft

WINDING BK104122-1

FL AMPS 30.5PU TORQUE 51.0 Lb.FtLR AMPS 266

Date 3/27/2018