

PRODUCT INFORMATION PACKET

Model No: LM24803

Catalog No: LM24803

Agricultural Motor, 5 HP, 1 Ph, 60 Hz, 230 V, 1800 RPM, 213TZ Frame, TEFC



Regal and are trademarks of Regal Rexnord Corporation or one of its affiliated companies.
©2022 Regal Rexnord Corporation, All Rights Reserved. MC017097E

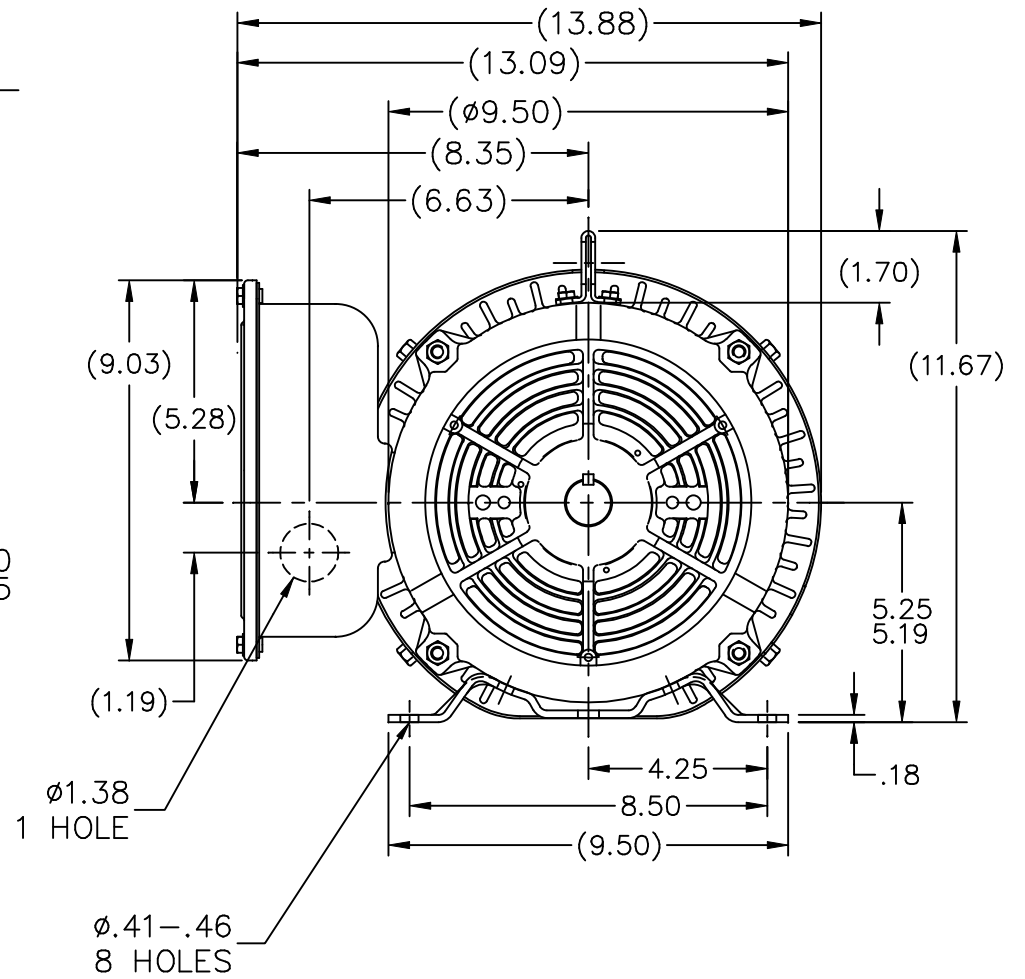
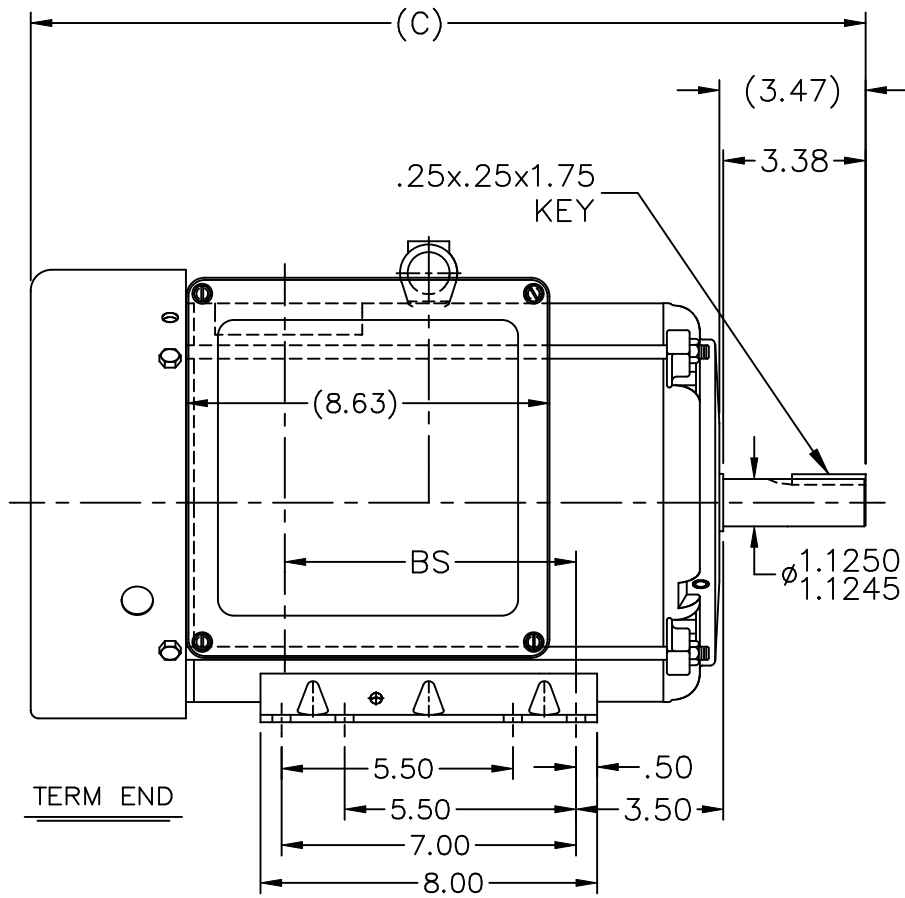
Nameplate Specifications

Output HP	5 Hp	Output KW	3.7 kW
Frequency	60 Hz	Voltage	230 V
Current	22.6 A	Speed	1740 rpm
Service Factor	1.15	Phase	1
Efficiency	82.5 %	Power Factor	83.5
Duty	Continuous	Insulation Class	F
Design Code	L	KVA Code	K
Frame	213TZ	Enclosure	Totally Enclosed Fan Cooled
Thermal Protection	Manual	Ambient Temperature	40 °C
Drive End Bearing Size	307	Opp Drive End Bearing Size	206
UL	Recognized (Not Protector)	CSA	Y
CE	N	IP Code	43
Number of Speeds	1		

Technical Specifications

Electrical Type	Capacitor Start Capacitor Run	Starting Method	Across The Line
Poles	4	Rotation	Selective Counterclockwise
Resistance Main	.308 Ohms	Mounting	Rigid Base
Motor Orientation	Horizontal	Drive End Bearing	Ball
Opp Drive End Bearing	Ball	Frame Material	Rolled Steel
Shaft Type	Single Special Extension	Overall Length	18.34 in
Frame Length	9.65 in	Shaft Diameter	1.125 in
Shaft Extension	3.38 in	Assembly/Box Mounting	F1 ONLY
Connection Drawing	A-EE9048LW-LN	Outline Drawing	A-SS86671LN-965


This is an uncontrolled document once printed or downloaded and is subject to change without notice. Date Created:09/07/2022



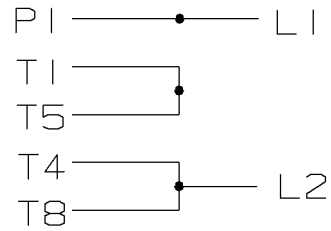
DASH	FRAME	C	BS
965	213T	18.34	5.42
1115	213/15T	19.84	6.92
1240	215T	21.09	8.17

NOTES:

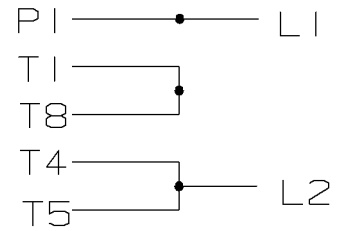
1. NAMEPLATE TO BE READ FROM C'BOX SIDE OF MOTOR.
2. DASH 965 TO BE READ FROM OPPOSITE SHAFT END.

				TOLERANCES UNLESS SPECIFIED			DRAWN BJW 11-02-1999					
				DEC.	INCHES		CHK	ML 11-03-1999				
				.X	±.1		APPD	TB 11-04-1999				
				.XX	±.03	TITLE OUTLINE - STEEL C' BOX 210 FR. - BB - TS - TEFC 1φ	SCALE	7=32				
6	REVISE CONDUIT BOX PER ISAAC#07-1837	RWR 12-21-2007	ML	.XXX	±.005		REF	A-SS8871				
1	NEW DRAWING	MH 04-18-1997		.XXXX	±.0005		FMF					
NO.	REVISION	BY & DATE	CHK	ANG	±7'30"	FINISH	PREV					
THIS DRAWING IN DESIGN AND DETAIL IS OUR PROPERTY AND MUST NOT BE USED EXCEPT IN CONNECTION WITH OUR WORK ALL RIGHTS OF DESIGN AND INVENTION ARE RESERVED THIS IS AN ELECTRONICALLY GENERATED DOCUMENT - DO NOT SCALE THIS PRINT				RFP	11-04-1999	CAD FILE	SS86671LN	SIZE	DRAWING NO.	PAGE	OF	REV.
				DIST	LB	A	SS86671LN				6	

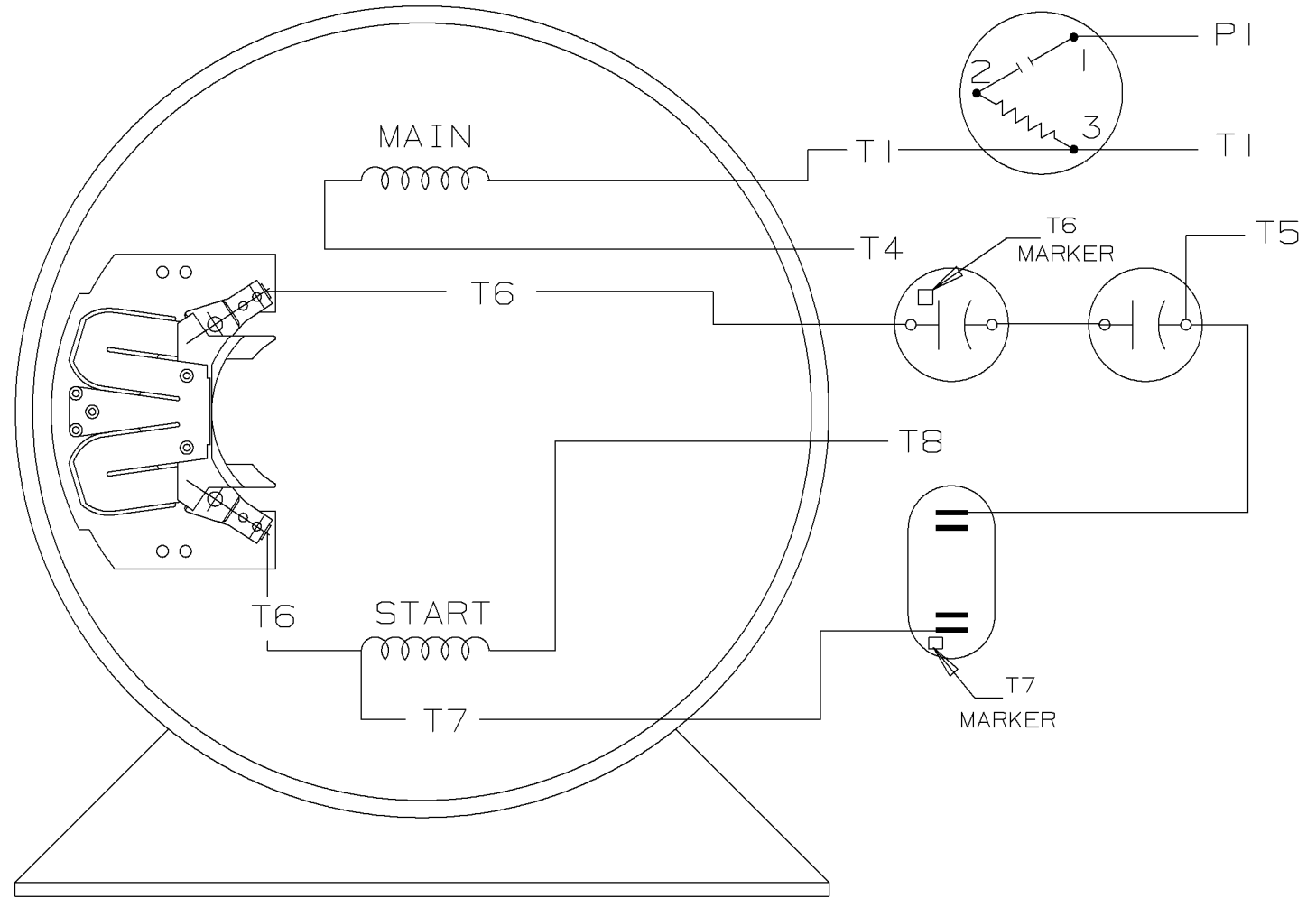
C.W. ROTATION



C.C.W. ROTATION



CONNECT:
 START CAPACITORS IN SERIES
 RUN CAPACITORS IN PARALLEL



SINGLE VOLTAGE
 CAPACITOR START
 CAPACITOR RUN
 REVERSIBLE

VIEW OF TERMINAL END

					✓ UNLESS OTHERWISE SPECIFIED DIMENSIONS ARE IN INCHES TOL. ON XX± XXX±.005 XXXX±.0005 ANGLES±		
					MAX. SURFACE ROUGHNESS UNLESS OTHERWISE NOTED FINISH MATERIAL	DRAWN BY B JW CHKD BY ML APPD BY TB	11-02-1999 11-02-1999 11-04-1999
1	11-04-1999	NEW DRAWING	BJW				
REV	DATE	CHANGE	NAME	PART NAME CONNECTION DIAGRAM 180-210 SWITCH		DRWG NO A-EE9048LW-LN	
				PURCHASED	CADD FILE NO.	EE9048LW-LN	

```
ERROR: undefined
OFFENDING COMMAND: 1
```

```
STACK:
```

```
/grestore
/i
-dictionary-
/Pscript_WinNT_Compat
-dictionary-
```



CERTIFICATION DATA SHEET

2100 WASHINGTON ST.
GRAFTON, WI
PH. 262-277-8810

CONN. DIAGRAM: A-EE9048LW-LN

OUTLINE: A-SS86671LN-965

CATALOG : LM24803

WINDING #: BK104124 2

MOUNTING: F1 ONLY

TYPICAL MOTOR PERFORMANCE DATA

HP	KW	SYNC. RPM	F.L. RPM	FRAME	ENCLOSURE	KVA CODE	DESIGN
5	3.70	1800	1740	213TZ	TEFC	K	L

PH	Hz	VOLTS	AMPS	START TYPE	DUTY	INSL	S.F.	AMB°C
1	60	230	22.6	ACROSS THE LINE	CONTINUOUS	F4	1.15	40

FULL LOAD EFF:	82.5	3/4 LOAD EFF:	83	1/2 LOAD EFF:	81	GTD. EFF		ELEC. TYPE	
FULL LOAD PF:	83.5	3/4 LOAD PF:	79.5	1/2 LOAD PF:	70.5	80	CAP START CAP RUN		

F.L. TORQUE	LOCKED ROTOR AMPS	L.R. TORQUE	B.D. TORQUE	F.L. RISE°C
15 LB-FT	170	69 LB-FT 0 %	38.6 LB-FT 0 %	60

SOUND PRESSURE @ 3 FT.	SOUND POWER	ROTOR WK^2	MAX. WK^2	SAFE STALL TIME	STARTS / HOUR	APPROX. MOTOR WGT
0 dBA	10 dBA	- LB-FT^2	0 LB-FT^2	0 SEC.	0	115 LBS.

*** SUPPLEMENTAL INFORMATION ***

DE BRACKET TYPE	ODE BRACKET TYPE	MOUNT TYPE	ORIENTATION	SEVERE DUTY	HAZARDOUS LOCATION	DRIP COVER	SCREENS	PAINT
STANDARD	STANDARD	RIGID	HORIZONTAL	FALSE	NONE	FALSE	NONE	GRAY - LINCOLN

BEARINGS		GREASE	SHAFT TYPE	SPECIAL DE	SPECIAL ODE	SHAFT MATERIAL	FRAME MATERIAL
DE	ODE						
BALL	BALL	POLYREX EM	SGL SPL EXT	1.125 x 3.38 IN SEK	NONE	AISI 1045 (C-240)	ROLLED STEEL
307	206						

THERMO-PROTECTORS				THERMISTORS	CONTROL	SPACE HEATERS
THERMOSTATS	PROTECTORS	WDG RTDs	BRG RTDs			
NONE	MANUAL	NONE	NONE	NONE	FALSE	NONE VOLTS

*
N
O
T
E
S
*

INVERTER TORQUE: NONE
INV. HP SPEED RANGE: NONE
ENCODER: NONE
NONE NONE
NONE NONE PPR
BRAKE: NONE NONE
NONE P/N NONE
NONE NONE
NONE FT-LB NONE V NONE Hz

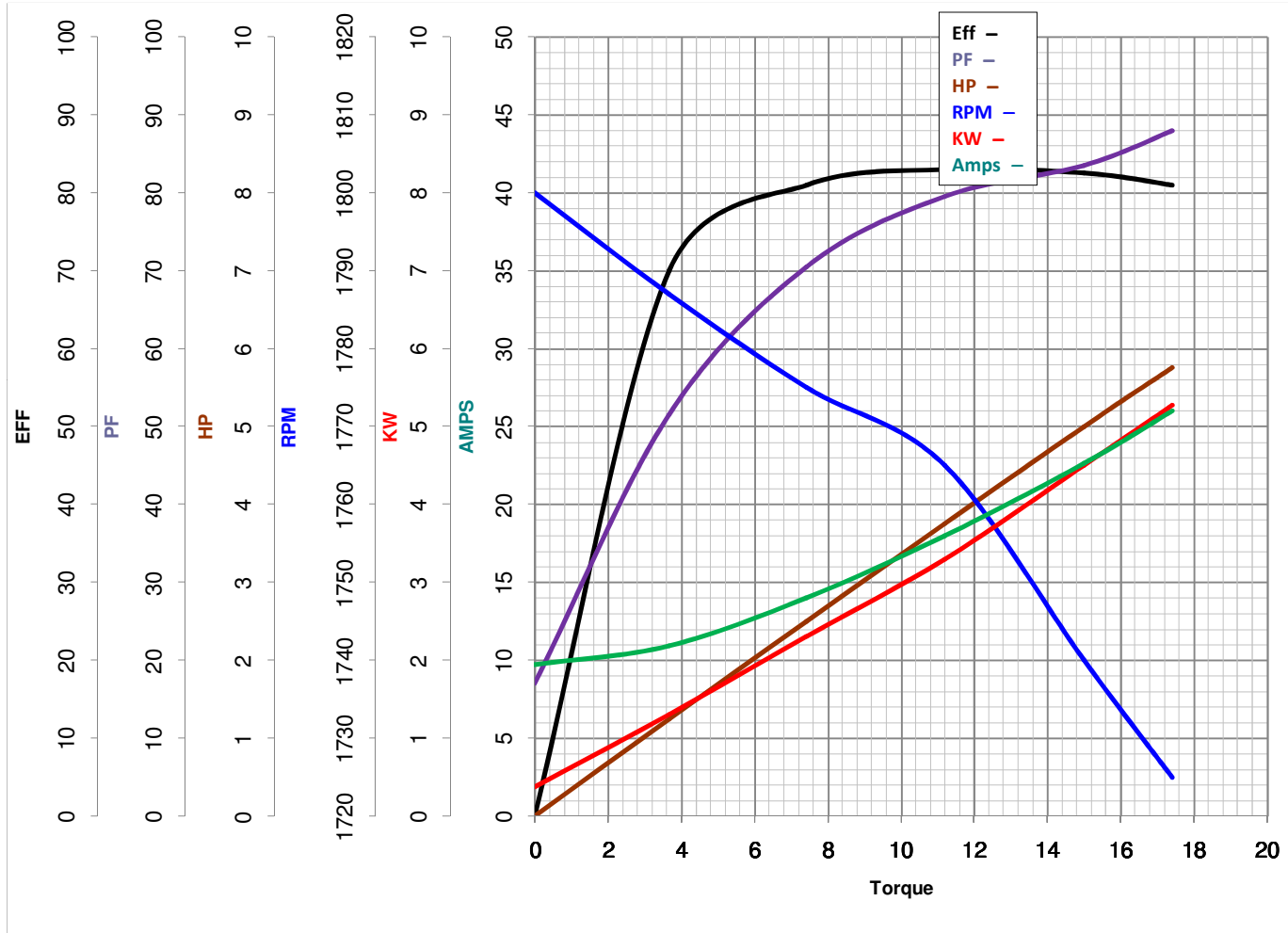


Model No LM24803

Catalog No LM24803BD

LEESON ELECTRIC CORPORATION TYPICAL PERFORMANCE CURVE for AC MOTOR

Curve at 230 Volts HP 5.00 PHASE 1
60 HZ
5 HP VOLTS 230
HZ 60 RPM 1740



Torque in Lb.Ft

FL TORQUE 15 Lb.Ft
BD TORQUE 38.6 Lb.Ft
LR TORQUE 69 Lb.Ft

FL AMPS 22.6
PU TORQUE 66.0 Lb.Ft
LR AMPS 170

WINDING BK104124-2

Date 3/22/2018