

PRODUCT INFORMATION PACKET

Model No: LM24799

Catalog No: LM24799

Agricultural Motor, 7.50 HP, 1 Ph, 60 Hz, 230 V, 1800 RPM, 215T Frame, TEFC



Regal and are trademarks of Regal Rexnord Corporation or one of its affiliated companies.
©2022 Regal Rexnord Corporation, All Rights Reserved. MC017097E

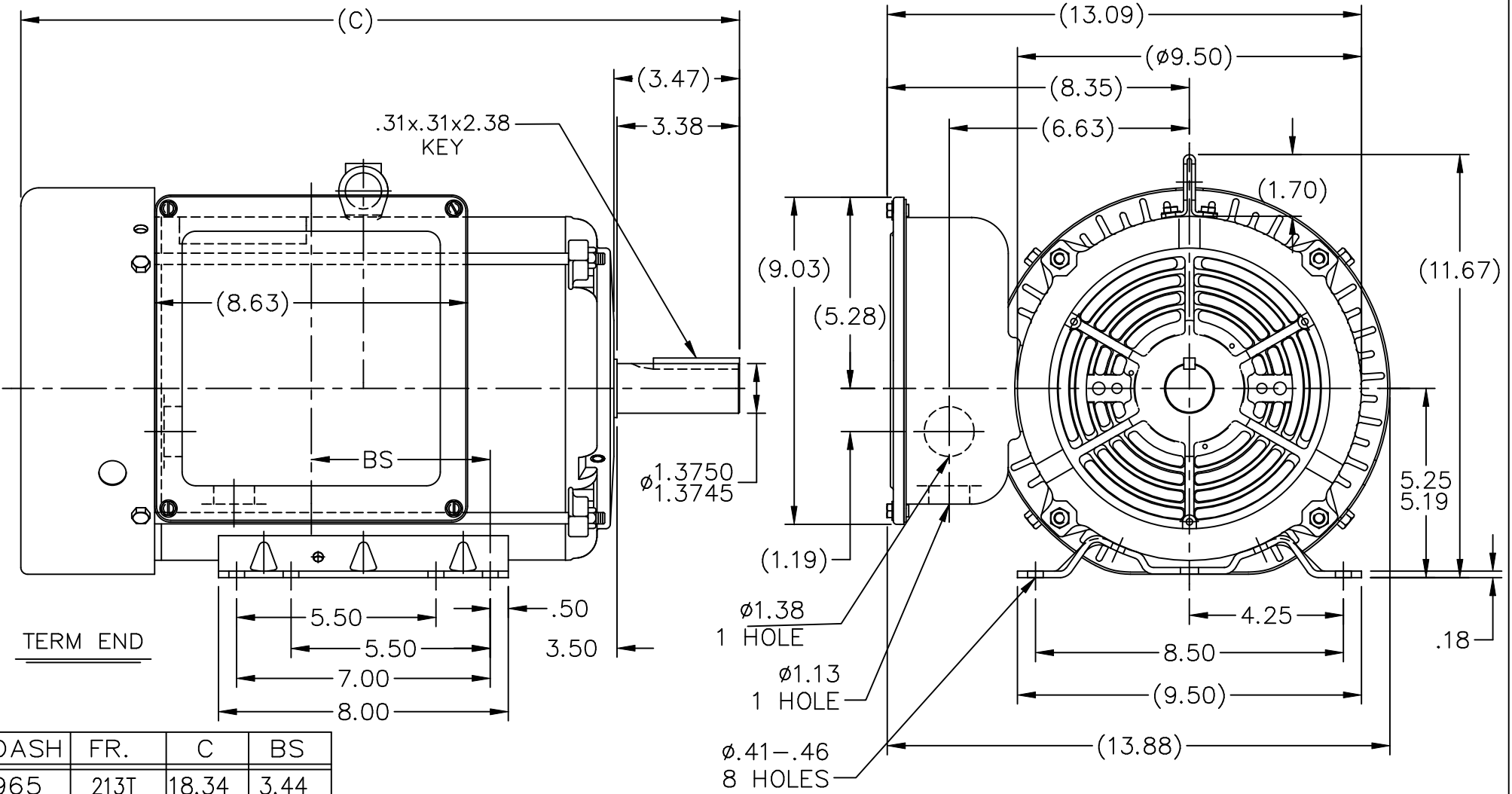
Nameplate Specifications

Output HP	7.50 Hp	Output KW	5.6 kW
Frequency	60 Hz	Voltage	230 V
Current	30.0 A	Speed	1740 rpm
Service Factor	1.15	Phase	1
Efficiency	84 %	Power Factor	96
Duty	Continuous	Insulation Class	F
Design Code	L	KVA Code	G
Frame	215T	Enclosure	Totally Enclosed Fan Cooled
Thermal Protection	Manual	Ambient Temperature	40 °C
Drive End Bearing Size	307	Opp Drive End Bearing Size	206
UL	Recognized (Not Protector)	CSA	Y
CE	N	IP Code	43
Number of Speeds	1		

Technical Specifications

Electrical Type	Capacitor Start Capacitor Run	Starting Method	Across The Line
Poles	4	Rotation	Selective Counterclockwise
Resistance Main	0 Ohms	Mounting	Rigid Base
Motor Orientation	Horizontal	Drive End Bearing	Ball
Opp Drive End Bearing	Ball	Frame Material	Rolled Steel
Shaft Type	T	Overall Length	21.09 in
Frame Length	12.40 in	Shaft Diameter	1.375 in
Shaft Extension	3.38 in	Assembly/Box Mounting	F1 ONLY
Outline Drawing	A-SS88687LN-1240	Connection Drawing	A-EE9048MT


This is an uncontrolled document once printed or downloaded and is subject to change without notice. Date Created:09/07/2022



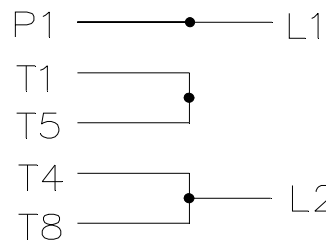
TERM END

DASH	FR.	C	BS
965	213T	18.34	3.44
1115	213/15T	19.84	4.94
1240	215T	21.09	6.19

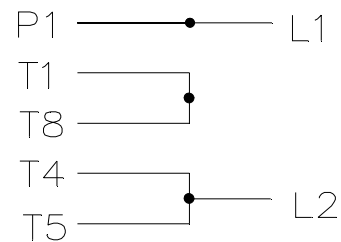
NOTES:
 1. NAMEPLATE TO BE READ FROM C'BOX SIDE OF MOTOR.
 2. DASH 965 TO BE READ FROM OPPOSITE SHAFT END

				TOLERANCES UNLESS SPECIFIED			DRAWN MJK 07-25-2007			
				DEC.	INCHES		CHK MG 01-24-2008			
				.X	$\pm .1$		APPD EH 01-24-2008			
				.XX	$\pm .03$		SCALE 1=4			
				.XXX	$\pm .005$		REF			
				.XXX	$\pm .0005$	TITLE OUTLINE	FMF			
				.XXXX	$\pm 7'30''$	210 FR. - TEFC - 1 PHASE	PREV			
NO.	REVISION	BY & DATE	CHK	ANG	FINISH					
			RFP	01-24-2008	CAD FILE ss88687ln	SIZE	DRAWING NO.	PAGE	OF	REV.
			DIST	LB		A	SS88687LN			

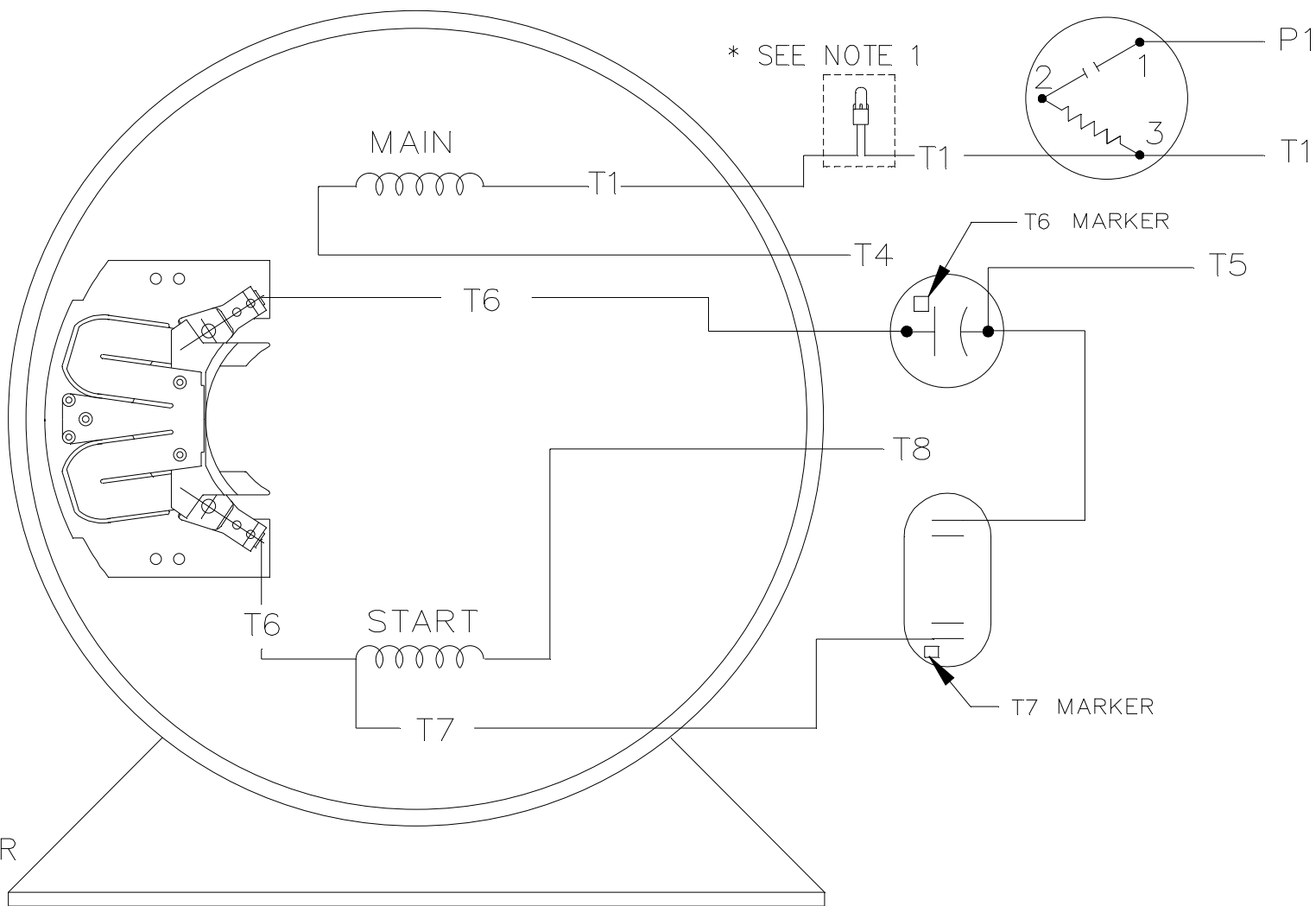
C.W. ROTATION



C.C.W. ROTATION



SINGLE VOLTAGE
 CAPACITOR START
 CAPACITOR RUN
 REVERSIBLE

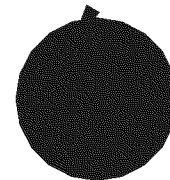
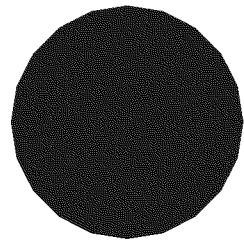
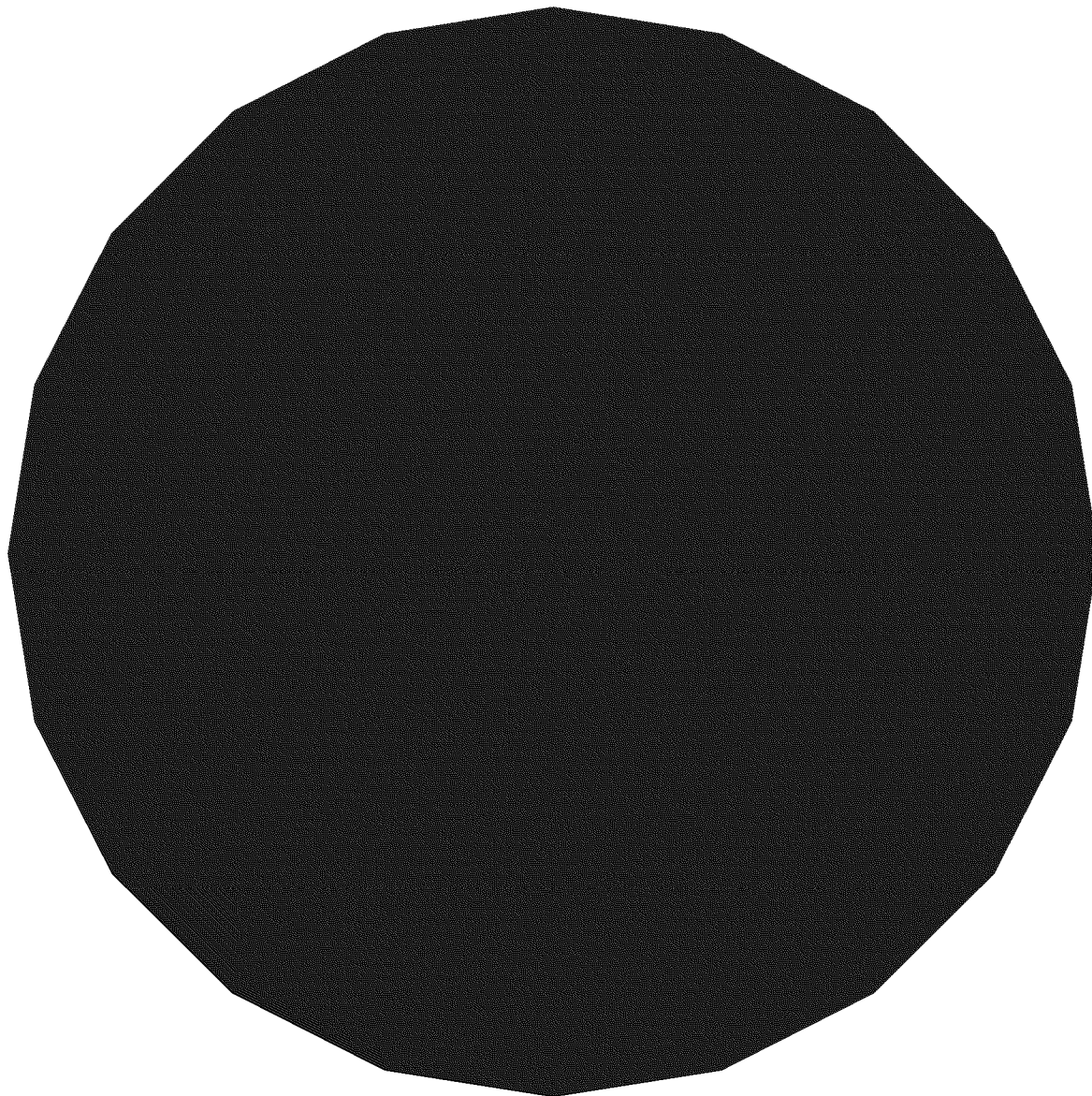


VIEW OF TERMINAL END

180 - 210 SWITCH

				TOLERANCES UNLESS SPECIFIED			DRAWN ML 04-11-1998				
				DEC.	INCHES		CHK CK 04-11-1998				
				.X	±.1		APPD MS 04-11-1998				
				.XX	±.02		SCALE 1=1				
				.XXX	±.005		REF				
1	ADDED PRESSURE CONNECTOR IN MT2 MODEL	NB 10/5/2011	AK	.XXXX	±.0005	TITLE CONNECTION DIAGRAM		FMF			
NO.	REVISION	BY & DATE	CHK	ANG	±7'30"	FINISH		PREV			
THIS DRAWING IN DESIGN AND DETAIL IS OUR PROPERTY AND MUST NOT BE USED EXCEPT IN CONNECTION WITH OUR WORK ALL RIGHTS OF DESIGN AND INVENTION ARE RESERVED THIS IS AN ELECTRONICALLY GENERATED DOCUMENT - DO NOT SCALE THIS PRINT				RFP	CAD FILE EE9048MT			SIZE A	DRAWING NO. EE9048MT	PAGE OF 1	REV. 1
				DIST LB-LE							

•
•
•
•
•





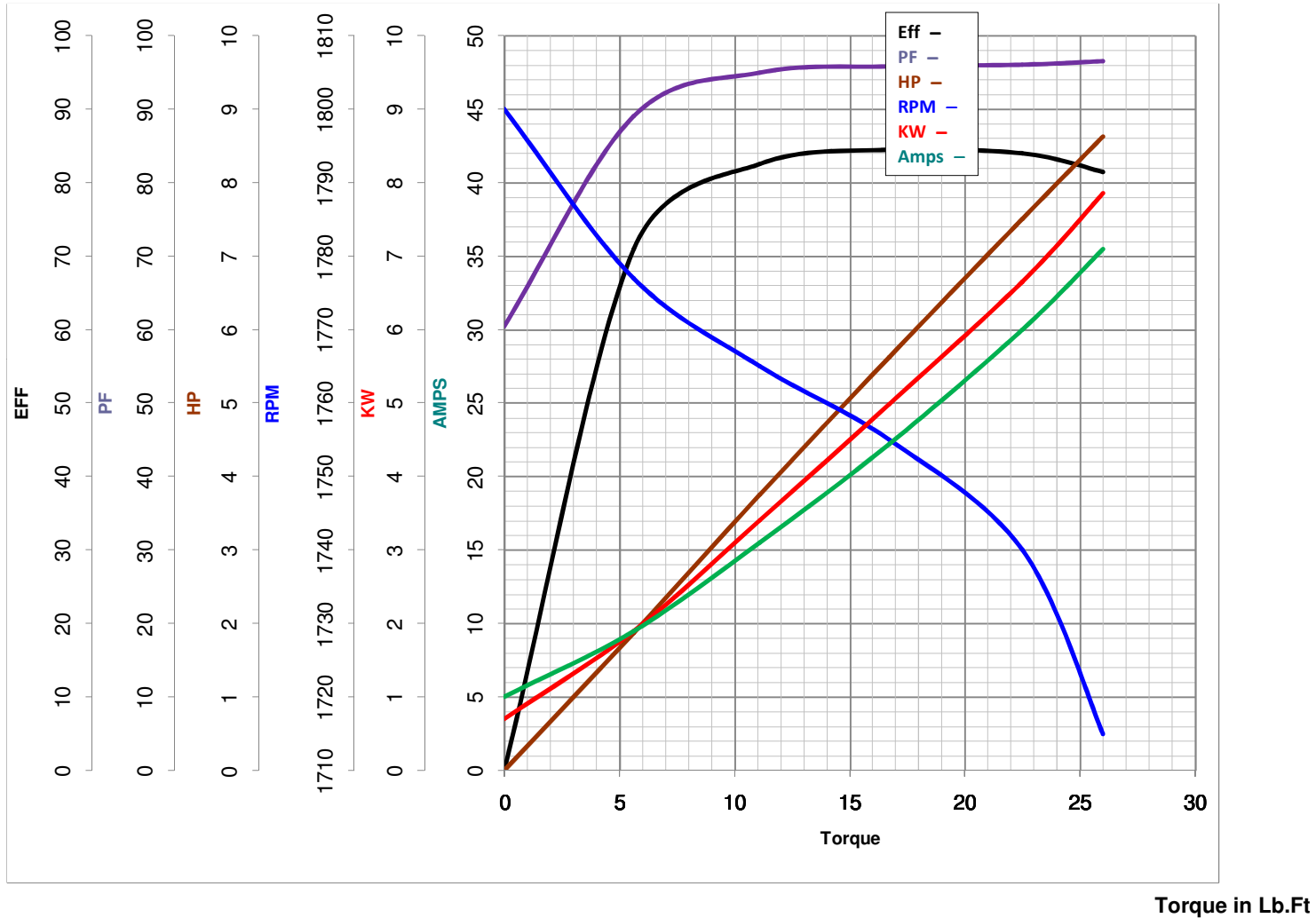
LEESON ELECTRIC CORPORATION
 TYPICAL PERFORMANCE CURVE for AC MOTOR

Model No LM24799

Curve at 230 Volts HP 7.50 PHASE 1
60 HZ
7.5 HP VOLTS 230

Catalog No LM24799DD

HZ 60 RPM 1740



FL TORQUE 22.5 Lb.Ft
 BD TORQUE 51.0 Lb.Ft
 LR TORQUE 50 Lb.Ft

FL AMPS 30
 PU TORQUE 46.5 Lb.Ft
 LR AMPS 198

WINDING BK104118-1

Date 3/27/2018