

# PRODUCT INFORMATION PACKET



Model No: LM24782

Catalog No: LM24782

Crop Dryer Motor, 10 & 15 HP, 1 Ph, 60 & 60 Hz, 230 & 230 V, 3600 & 3600 RPM, 215TZ Frame, DPAO



Regal and Leeson are trademarks of Regal Rexnord Corporation or one of its affiliated companies.

©2023 Regal Rexnord Corporation, All Rights Reserved. MC017097E



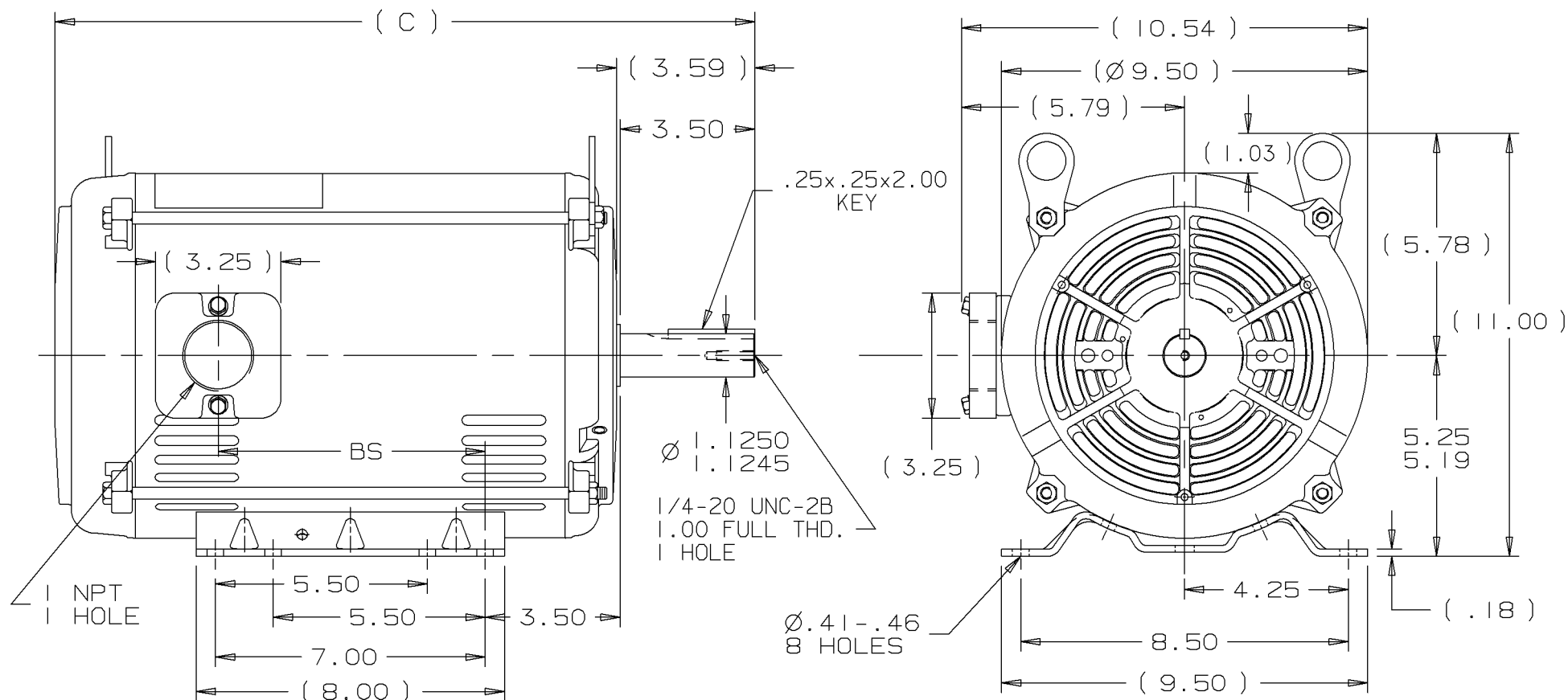


## Nameplate Specifications

Phase	1	Output HP	10 & 15 Hp
Output KW	7.5 & 11.2 kW	Voltage	230 & 230 V
Speed	3495 & 3450 rpm	Service Factor	1.5 & 1.0
Frame	215TZ	Enclosure	Drip Proof Air Over
Thermal Protection	No Protection	Efficiency	82.5 & 82.5 %
Ambient Temperature	40 °C	Frequency	60 & 60 Hz
Current	46 & 71 A	Power Factor	83.5
Duty	Continuous	Insulation Class	F
Design Code	NO DESIGN CODE	KVA Code	C
Drive End Bearing Size	307	Opp Drive End Bearing Size	206
UL	Recognized	CSA	Y
CE	N	IP Code	22
Number of Speeds	1		

## Technical Specifications

Electrical Type	Capacitor Start Induction Run	Starting Method	Across The Line
Poles	2	Rotation	Selective Counterclockwise
Resistance Main	.151 Ohms	Mounting	Rigid Base
Motor Orientation	Horizontal	Drive End Bearing	Ball
Opp Drive End Bearing	Ball	Frame Material	Rolled Steel
Shaft Type	Single Special Extension	Overall Length	18.16 in
Frame Length	11.15 in	Shaft Diameter	1.125 in
Shaft Extension	3.5 in	Assembly/Box Mounting	F1 ONLY
Outline Drawing	A-SS86663LN-1115	Connection Drawing	A-EE7090JM-LN




## NOTES:

1. NAMEPLATE TO BE READ FROM LEAD EXIT SIDE OF MOTOR.
2. SEE MODEL FOR LEAD LENGTH.
3. NPT LEAD EXIT CAN BE MOUNTED ON OPPOSITE SIDE BY REMOVING BRACKETS AND TURNING FRAME 180°.  
(EXCEPT AS NOTED)

DASH	FR.	C	BS	MOUNTING
965	213T	16.66	5.43	
1115	213/15T	18.16	6.93	
1240	213/15T	19.41	8.18	FI ONLY

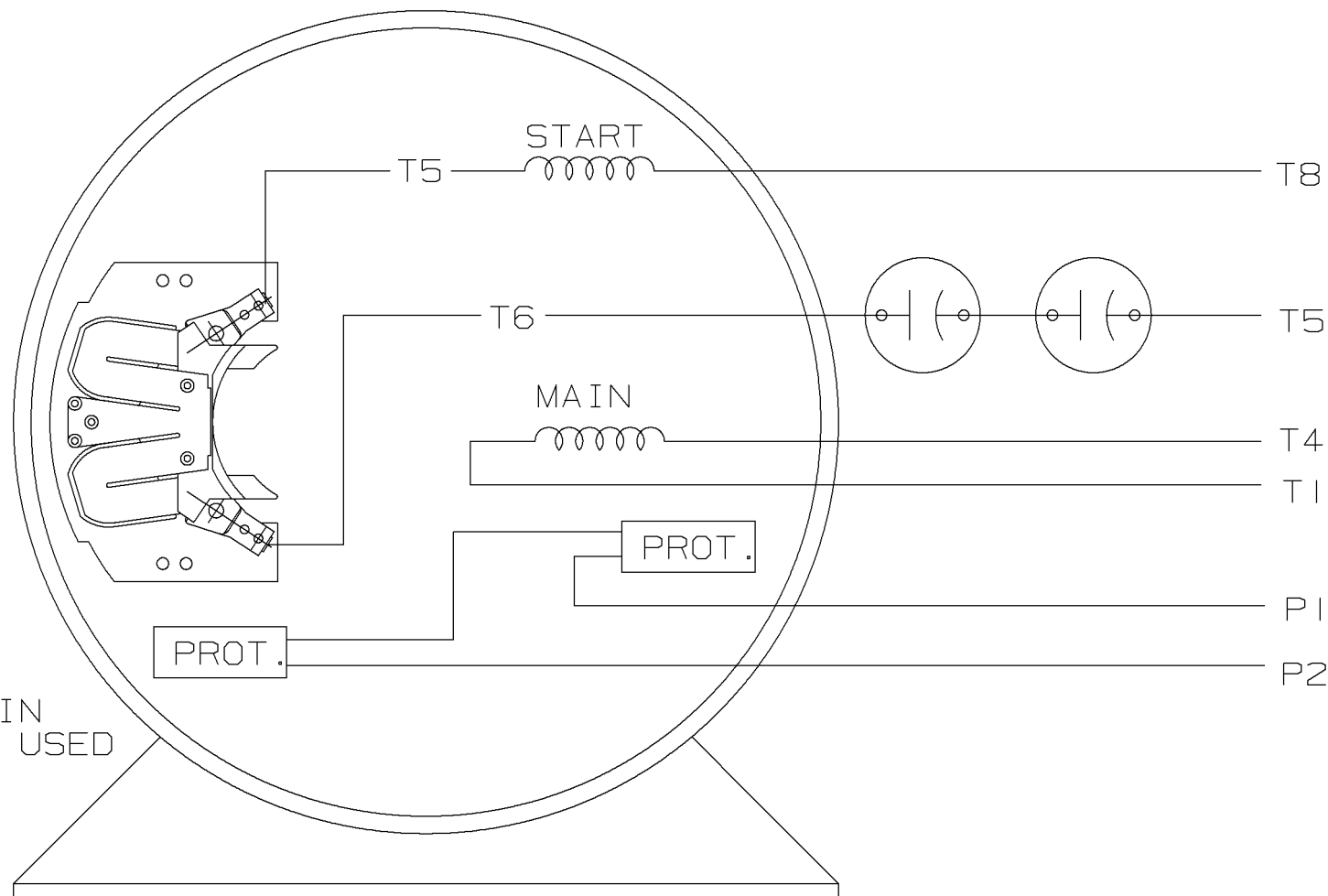
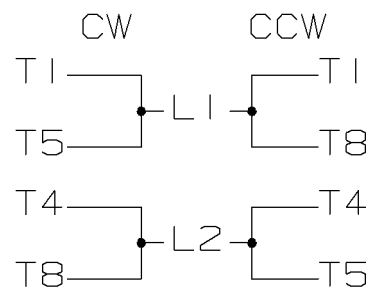
A. SPL DE: 1.125 x 3.50 IN SEK WITH 1/4 IN TAPPED HOLE

					UNLESS OTHERWISE SPECIFIED DIMENSIONS ARE IN INCHES TOL. ON XX± .03    XXX± .005    XXXX± .0005    ANGLES± 7°30"				
					MAX. SURFACE ROUGHNESS UNLESS OTHERWISE NOTED		DRAWN BY    DRS	10-28-1999	
				FINISH			CHKD BY    ML	10-28-1999	
I	10-28-1999	NEW DRAWING	DRS		MATERIAL		APPD BY    GK	10-28-1999	
REV	DATE	CHANGE	NAME	PART NAME    OUTLINE 210T FR. - BB    - SS - DR.PR. - 1Ø				DRWG NO A- SS86663LN	
					PURCHASED	CADD FILE NO.	SS86663LN		


ERROR: syntaxerror  
OFFENDING COMMAND: --nostringval--

STACK:

/im  
-savelevel-

SINGLE VOLTAGE CAPACITOR START  
MOTOR, ELECTRICALLY REVERSIBLECONNECT PROTECTORS IN  
SERIES WHEN TWO ARE USED

VIEW OF TERMINAL END

					125/✓		UNLESS OTHERWISE SPECIFIED DIMENSIONS ARE IN INCHES TOL. ON XX± .02    XXX± .005    XXXX± .0005    ANGLES± 7'30"						
					MAX. SURFACE ROUGHNESS UNLESS OTHERWISE NOTED				DRAWN BY	DRS	10-28-1999		
					FINISH				CHKD BY	ML	10-28-1999		
					MATERIAL				APPD BY	GK	10-28-1999		
	10-28-1999	NEW DRAWING		DRS									
REV	DATE	CHANGE		NAME	PART NAME    CONNECTION DIAGRAM 180 - 210 SWITCH							DRWG NO A - EE7090JM-LN	
					PURCHASED		CADD FILE NO.		EE7090JM-LN				



# CERTIFICATION DATA SHEET

2100 WASHINGTON ST.  
GRAFTON, WI  
PH. 262-277-8810

CONN. DIAGRAM: A-EE7090JM-LN

CATALOG : LM24782

OUTLINE: A-SS86663LN-1115

WINDING #: CK10248 R1 2

MOUNTING: F1 ONLY

## TYPICAL MOTOR PERFORMANCE DATA

HP	kW	SYNC. RPM	F.L. RPM	FRAME	ENCLOSURE	KVA CODE	DESIGN
10&15	7.50&11.2	3600	3495&3450	215TZ	DPAO	C	NO DESIGN CODE

PH	Hz	VOLTS	AMPS	START TYPE	DUTY	INSL	S.F.	AMB°C
1	60/60	230&230	46&71	ACROSS THE LINE	CONTINUOUS	F4	1.5/1.0	40

FULL LOAD EFF:	82.5&82.5	3/4 LOAD EFF:	-	1/2 LOAD EFF:	86	GTD. EFF		ELEC. TYPE
FULL LOAD PF:	83.5&86	3/4 LOAD PF:	-	1/2 LOAD PF:	77	80		CAP START IND RUN

F.L. TORQUE	LOCKED ROTOR AMPS	L.R. TORQUE	B.D. TORQUE	F.L. RISE°C
23 LB-FT	250	18 LB-FT 79 %	37.5 LB-FT 165 %	46

SOUND PRESSURE @ 3 FT.	SOUND POWER	ROTOR WK^2	MAX. WK^2	SAFE STALL TIME	STARTS / HOUR	APPROX. MOTOR WGT
0 dBA	10 dBA	0 LB-FT^2	0 LB-FT^2	0 SEC.	0	184 LBS.

## \*\*\* SUPPLEMENTAL INFORMATION \*\*\*

DE BRACKET TYPE	ODE BRACKET TYPE	MOUNT TYPE	ORIENTATION	SEVERE DUTY	HAZARDOUS LOCATION	DRIP COVER	SCREENS	PAINT
STANDARD	STANDARD	RIGID	HORIZONTAL	FALSE	NONE	FALSE	NONE	GRAY - LINCOLN

BEARINGS		GREASE	SHAFT TYPE	SPECIAL DE	SPECIAL ODE	SHAFT MATERIAL	FRAME MATERIAL
DE	ODE						
BALL	BALL						
307	206	POLYREX EM	SGL SPL EXT	1.125 x 3.50 IN SEK	NONE	AISI 1045 (C-240)	ROLLED STEEL

THERMO-PROTECTORS				THERMISTORS	CONTROL	SPACE HEATERS
THERMOSTATS	PROTECTORS	WDG RTDs	BRG RTDs			
TSTATS (N/C)	NOT	NONE	NONE			

\*  
  
N  
  
O  
  
T  
  
E  
  
S  
  
\*

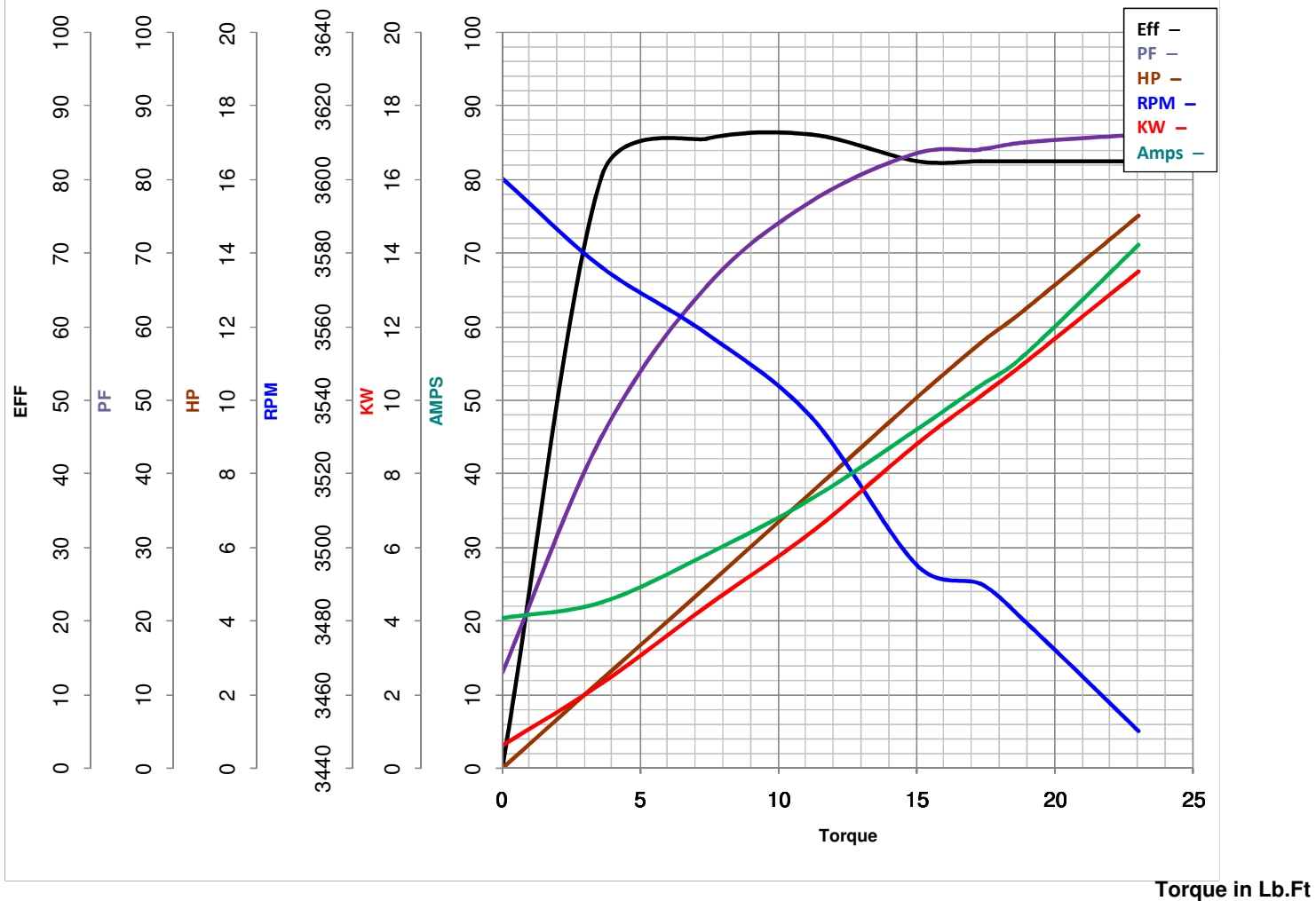
INVERTER TORQUE:	NONE
INV. HP SPEED RANGE:	NONE
ENCODER:	NONE
	NONE NONE
	NONE NONE PPR
BRAKE:	NONE NONE
	NONE P/N NONE
	NONE NONE
FT-LB	NONE V NONE Hz

Model No LM24782Catalog No LM24782AC

# LEESON ELECTRIC CORPORATION

## TYPICAL PERFORMANCE CURVE for AC MOTOR

 Curve at 230  
60  
15

 Volts  
 HZ  
 HP
HP 10&15PHASE 1VOLTS 230&230HZ 60&60RPM 3495&3450
 FL TORQUE 23 Lb.Ft  
 BD TORQUE 37.5 Lb.Ft  
 LR TORQUE 18 Lb.Ft

 FL AMPS 71  
 PU TORQUE 18.0 Lb.Ft  
 LR AMPS 250

WINDING CK10248-2

Date 7/17/2018