

PRODUCT INFORMATION PACKET



Model No: LM24781

Catalog No: LM24781

Crop Dryer Motor, 7 & 9 HP, 1 Ph, 60 & 60 Hz, 230 & 230 V, 3600 & 3600 RPM, 184TZ Frame, DP



Regal and Leeson are trademarks of Regal Rexnord Corporation or one of its affiliated companies.

©2023 Regal Rexnord Corporation, All Rights Reserved. MC017097E





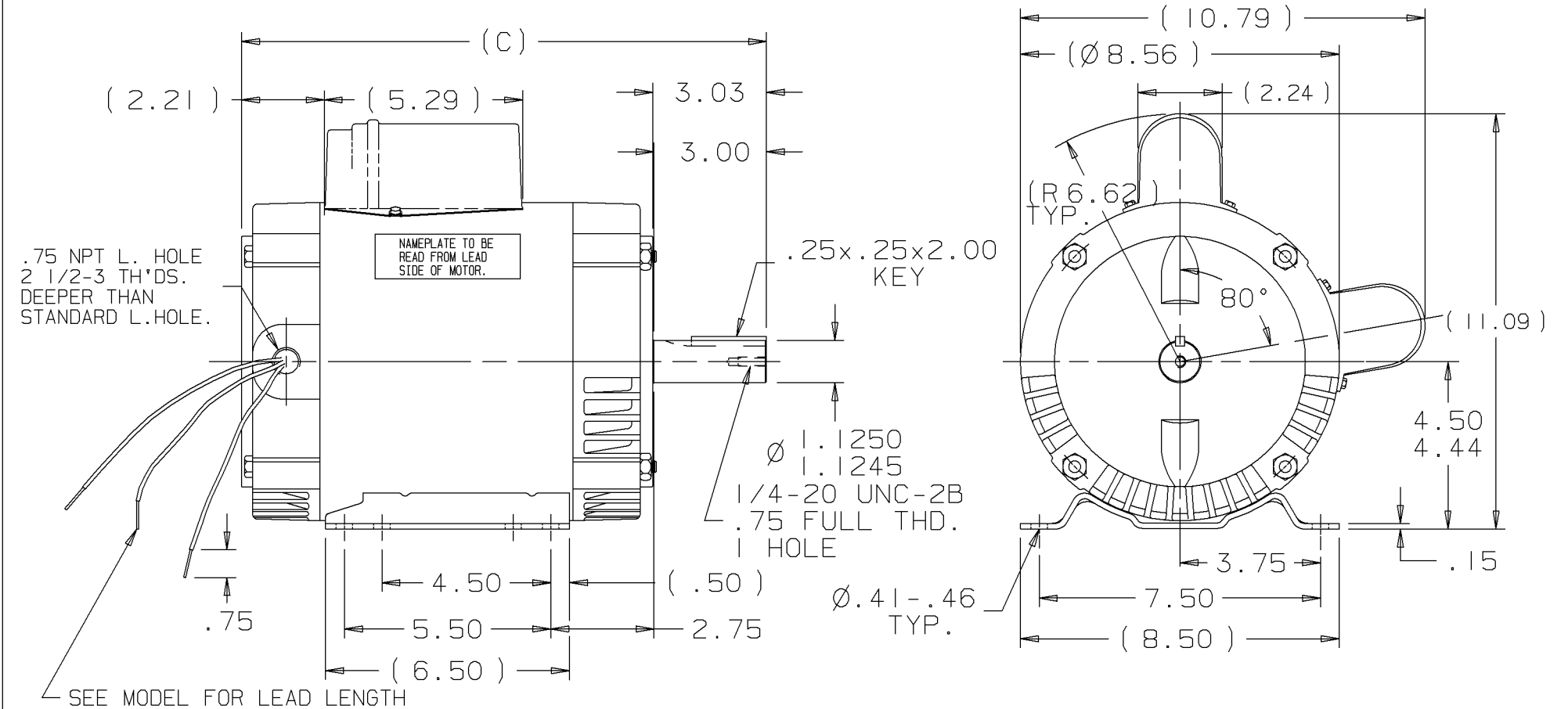
Nameplate Specifications

Phase	1	Output HP	7 & 9 Hp
Output KW	5.2 & 6.7 kW	Voltage	230 & 230 V
Speed	3500 & 3485 rpm	Service Factor	1.3 & 1.0
Frame	184TZ	Enclosure	Drip Proof
Thermal Protection	Thermostat	Efficiency	75.5 & 74 %
Ambient Temperature	40 °C	Frequency	60 & 60 Hz
Current	36 & 45 A	Power Factor	83
Duty	Continuous	Insulation Class	F
Design Code	NO DESIGN CODE	KVA Code	F
Drive End Bearing Size	206	Opp Drive End Bearing Size	205
UL	Recognized	CSA	Y
CE	N	IP Code	12
Number of Speeds	1		

Technical Specifications


Electrical Type	Capacitor Start Induction Run	Starting Method	Across The Line
Poles	2	Rotation	Selective Counterclockwise
Resistance Main	0 Ohms	Mounting	Rigid Base
Motor Orientation	Horizontal	Drive End Bearing	Ball
Opp Drive End Bearing	Ball	Frame Material	Rolled Steel
Shaft Type	Single Special Extension	Overall Length	15.50 in
Frame Length	8.25 in	Shaft Diameter	1.125 in
Shaft Extension	3 in	Assembly/Box Mounting	F1 ONLY
Outline Drawing	A-SS66062LN-825	Connection Drawing	A-EE7090JP-LN

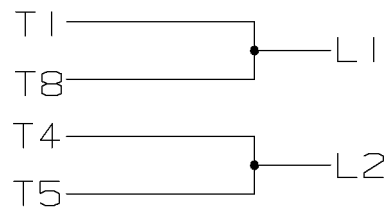
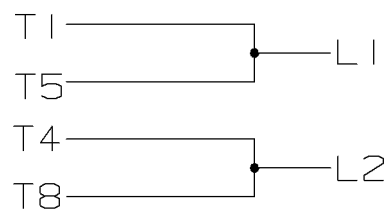
A - SS66062LN



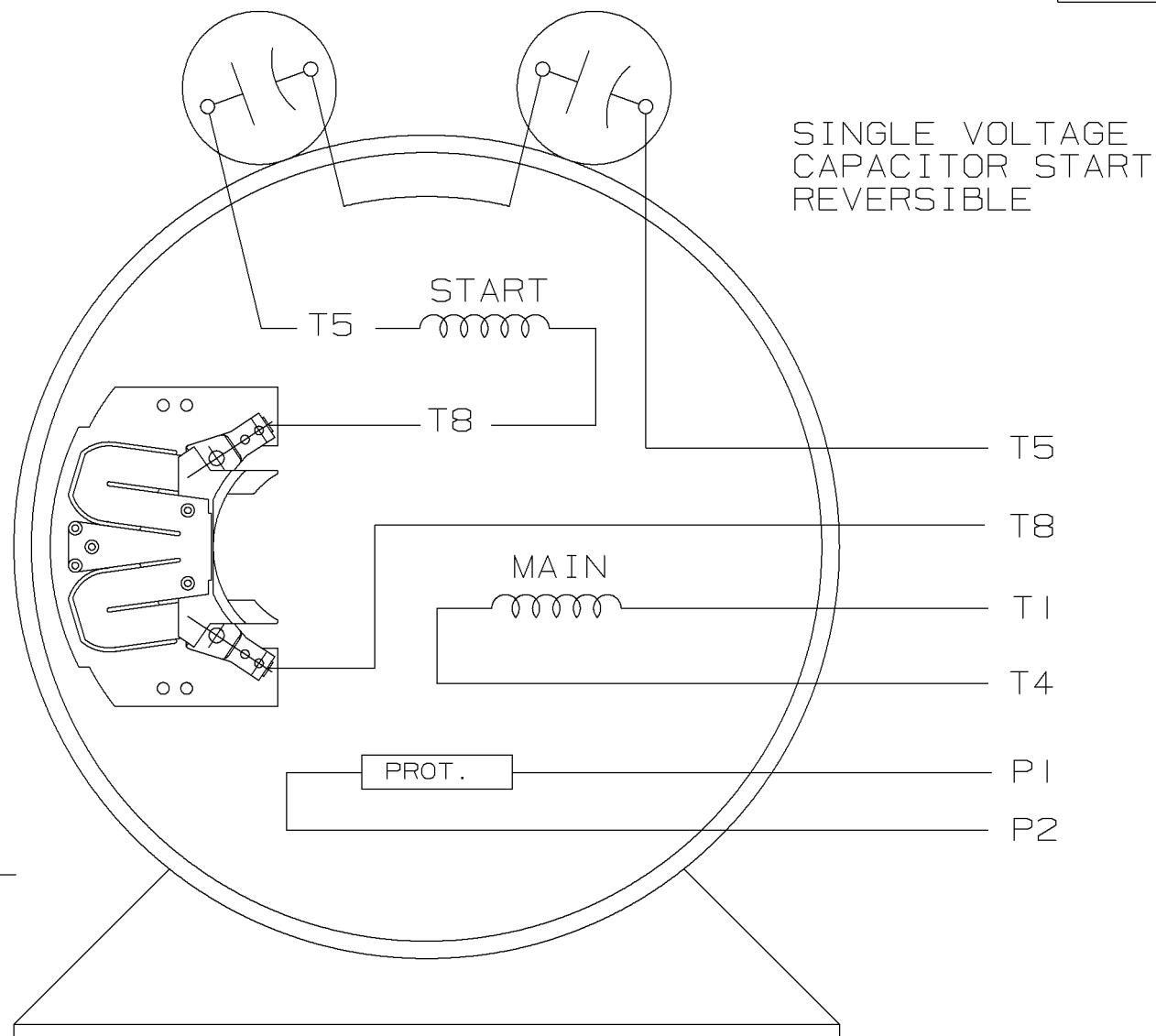
DASH	FR.	C	MOUNTING
725	182/4	14.50	F1 OR F2
775	182/4	15.00	F1 OR F2
825	182/4	15.50	F1 OR F2
875	182/4	16.00	F1 OR F2
925	182/4	16.50	F1 OR F2

A. SPL DE: 1.125 x 3.00 IN SEK WITH 1/4 IN TAPPED HOLE

					✓ UNLESS OTHERWISE SPECIFIED DIMENSIONS ARE IN INCHES TOL. ON XX± .03 XXX± .005 XXXX± .0005 ANGLES± 7°30"					
					MAX. SURFACE ROUGHNESS UNLESS OTHERWISE NOTED			DRAWN BY TJB	10-27-1999	
					FINISH			CHKD BY ML	10-27-1999	
I	10-27-1999	NEW DRAWING	TJB		MATERIAL			APPD BY GK	10-27-1999	
REV	DATE	CHANGE	NAME	PART NAME OUTLINE 180 FR. - BB - SCS - DR.PR.					DRWG NO A - SS66062LN	
					PURCHASED		CADD FILE NO.		SS66062LN	

CCW ROTATIONCW ROTATION

P1 & P2 ARE THERMAL
PROTECTOR LEADS



VIEW OF TERMINAL END

				<div></div>	✓ <div>UNLESS OTHERWISE SPECIFIED DIMENSIONS ARE IN INCHES TOL. ON XX± XXX±.005 XXXX±.0005 ANGLES±</div>			
					MAX. SURFACE ROUGHNESS UNLESS OTHERWISE NOTED		DRAWN BY TJB	10-27-1999
					FINISH		CHKD BY ML	10-27-1999
	10-27-1999	NEW DRAWING	TJB		MATERIAL		APPD BY GK	10-27-1999
REV	DATE	CHANGE	NAME	PART NAME CONNECTION DIAGRAM 180-210 SWITCH				DRWG NO A- EE7090JP-LN
					PURCHASED		CADD FILE NO.	EE7090JP-LN



CERTIFICATION DATA SHEET

**2100 WASHINGTON ST.
GRAFTON, WI
PH. 262-277-8810**

CONN. DIAGRAM: A-EE7090JP-LN

OUTLINE: A-SS66062LN-825

CATALOG :: LM24781

WINDING #: CK8251 2 A

MOUNTING: F1 ONLY

TYPICAL MOTOR PERFORMANCE DATA

HP	kW	SYNC. RPM	F.L. RPM	FRAME	ENCLOSURE	KVA CODE	DESIGN
7&9	5.20&6.70	1200	3500&3485	184TZ	DP	F	NO DESIGN CODE

PH	Hz	VOLTS	AMPS	START TYPE	DUTY	INSL	S.F.	AMB°C
1	60/60	230&230	36&45	ACROSS THE LINE	CONTINUOUS	F3	1.3/1.0	40

FULL LOAD EFF:	75.5&74	3/4 LOAD EFF:	79.4	1/2 LOAD EFF:	75.8	GTD. EFF		ELEC. TYPE
FULL LOAD PF:	83&85.5	3/4 LOAD PF:	83.9	1/2 LOAD PF:	69.8	72		CAP START IND RUN

F.L. TORQUE	LOCKED ROTOR AMPS	L.R. TORQUE	B.D. TORQUE	F.L. RISE°C
13.5 lb-ft	189.9	11.8 lb-ft 113 %	23.6 lb-ft 227 %	70

SOUND PRESSURE @ 3 FT.	SOUND POWER	ROTOR WK^2	MAX. WK^2	SAFE STALL TIME	STARTS / HOUR	APPROX. MOTOR WGT
0 dBA	10 dBA	0 LB-FT^2	0 LB-FT^2	0 SEC.	0	24 LBS.

***** SUPPLEMENTAL INFORMATION *****

DE BRACKET TYPE	ODE BRACKET TYPE	MOUNT TYPE	ORIENTATION	SEVERE DUTY	HAZARDOUS LOCATION	DRIP COVER	SCREENS	PAINT
STANDARD	STANDARD	RIGID	HORIZONTAL	FALSE	NONE	FALSE	NONE	GRAY (ENAMEL)

BEARINGS		GREASE	SHAFT TYPE	SPECIAL DE	SPECIAL ODE	SHAFT MATERIAL	FRAME MATERIAL
DE	ODE						
BALL	BALL						
206	205	POLYREX EM	SGL SPL EXT	SPECIAL	NONE	1144 STRESSPROOF (C-223)	ROLLED STEEL

THERMO-PROTECTORS				THERMISTORS	CONTROL	SPACE HEATERS
THERMOSTATS	PROTECTORS	WDG RTDs	BRG RTDs			
TSTATS (N/C)	NOT	NONE	NONE	NONE	FALSE	NONE VOLTS

*

N

O

T

E

S

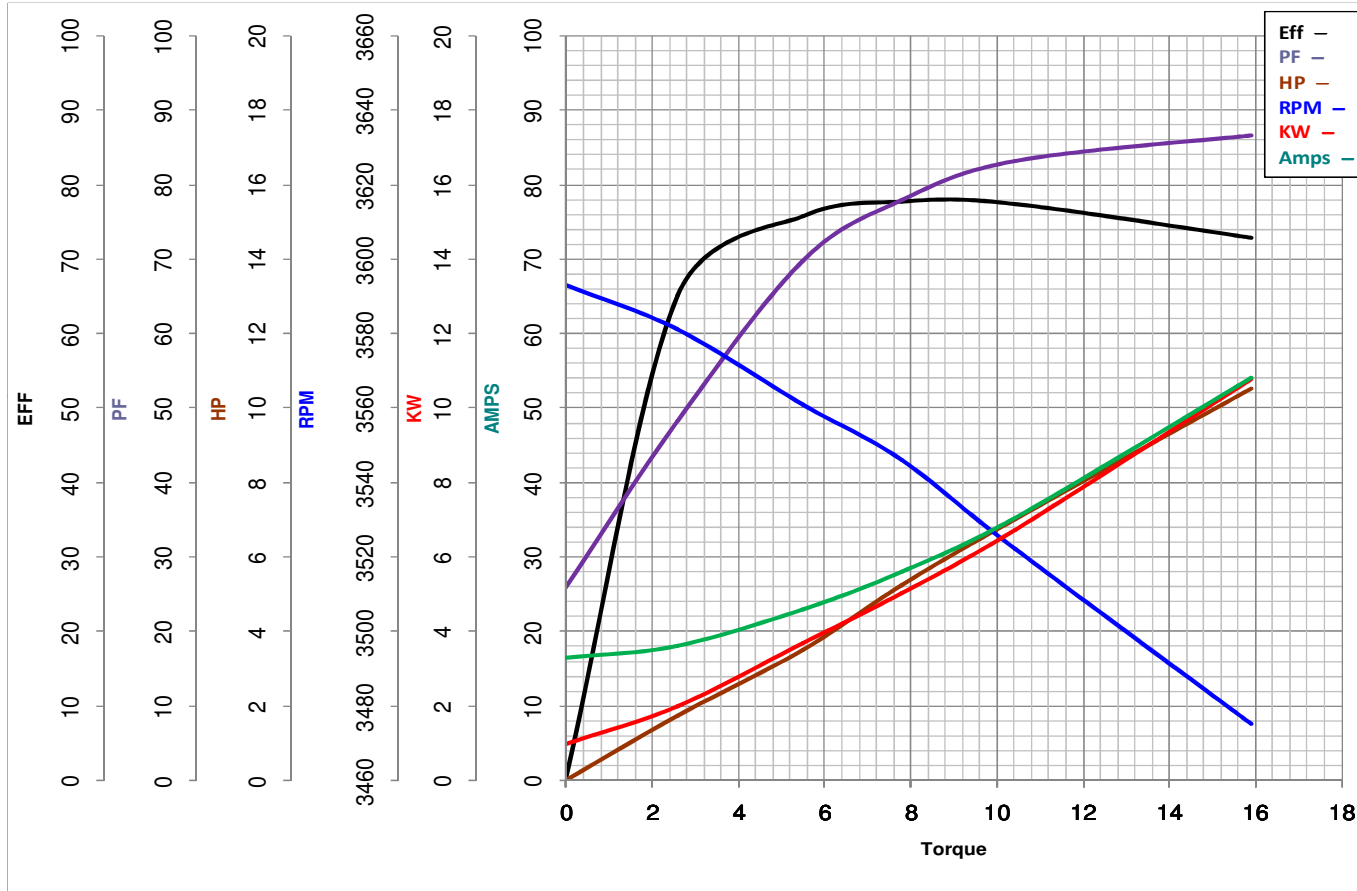
*

INVERTER TORQUE:	NONE
INV. HP SPEED RANGE:	NONE
ENCODER:	NONE
	NONE NONE
	NONE NONE PPR
BRAKE:	NONE NONE
	NONE P/N NONE
	NONE NONE
	NONE FT-LB NONE V NONE Hz



LEESON ELECTRIC CORPORATION

TYPICAL PERFORMANCE CURVE for AC MOTOR

Model No LM24781Curve at 230
60
7Volts
HZ
HPHP 7&9PHASE 1VOLTS 230&230Catalog No LM24781ABHZ 60&60RPM 3500&3485

Torque in Lb.Ft

FL TORQUE 10.4 Lb.Ft
 BD TORQUE 23.6 Lb.Ft
 LR TORQUE 11.8 Lb.Ft

FL AMPS 36
 PU TORQUE 11.3 Lb.Ft
 LR AMPS 189.9

WINDING CK8251-2

Date 3/15/2019