

PRODUCT INFORMATION PACKET

Model No: LM24684

Catalog No: LM24684

Air Compressor Motor, 10 HP, 1 Ph, 60 Hz, 208-230 V, 1800 RPM, 215T Frame, DP



Regal and are trademarks of Regal Rexnord Corporation or one of its affiliated companies.
©2022 Regal Rexnord Corporation, All Rights Reserved. MC017097E

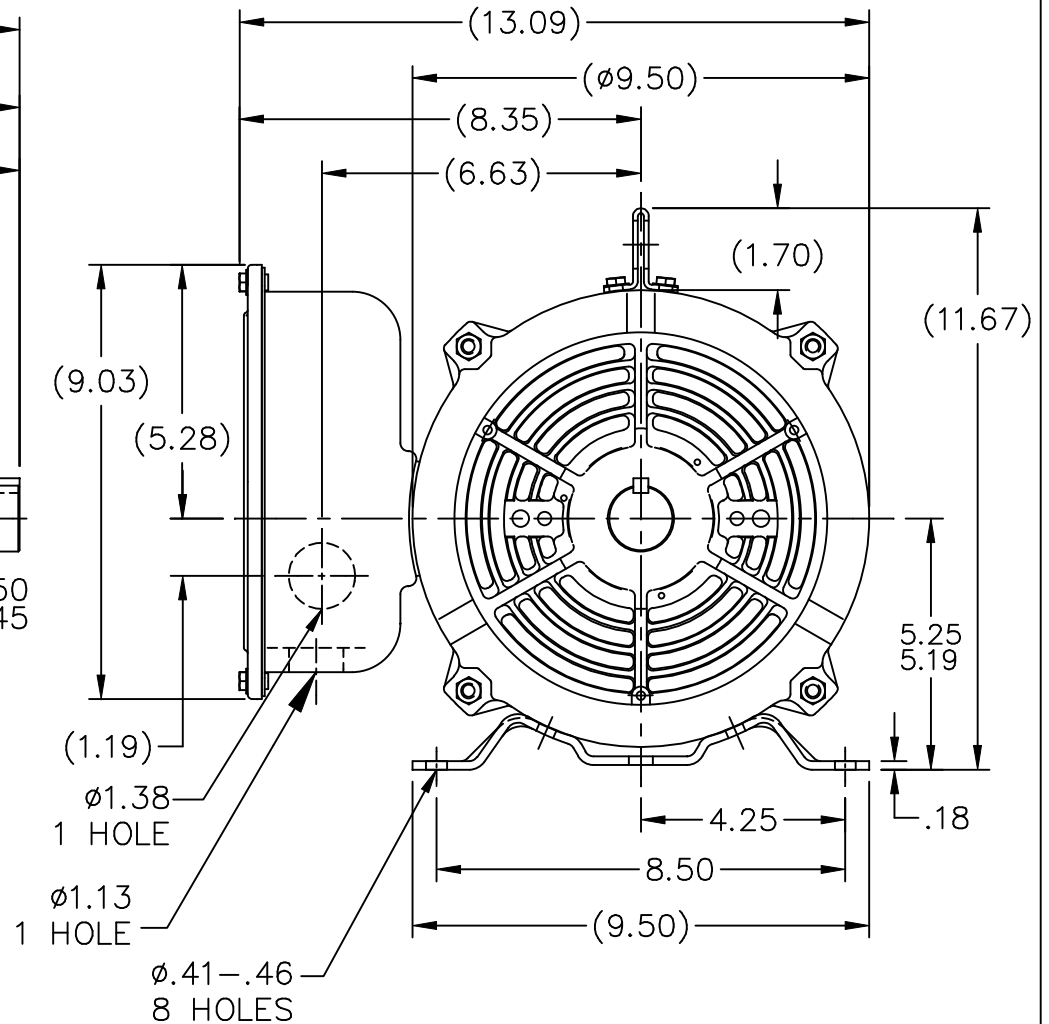
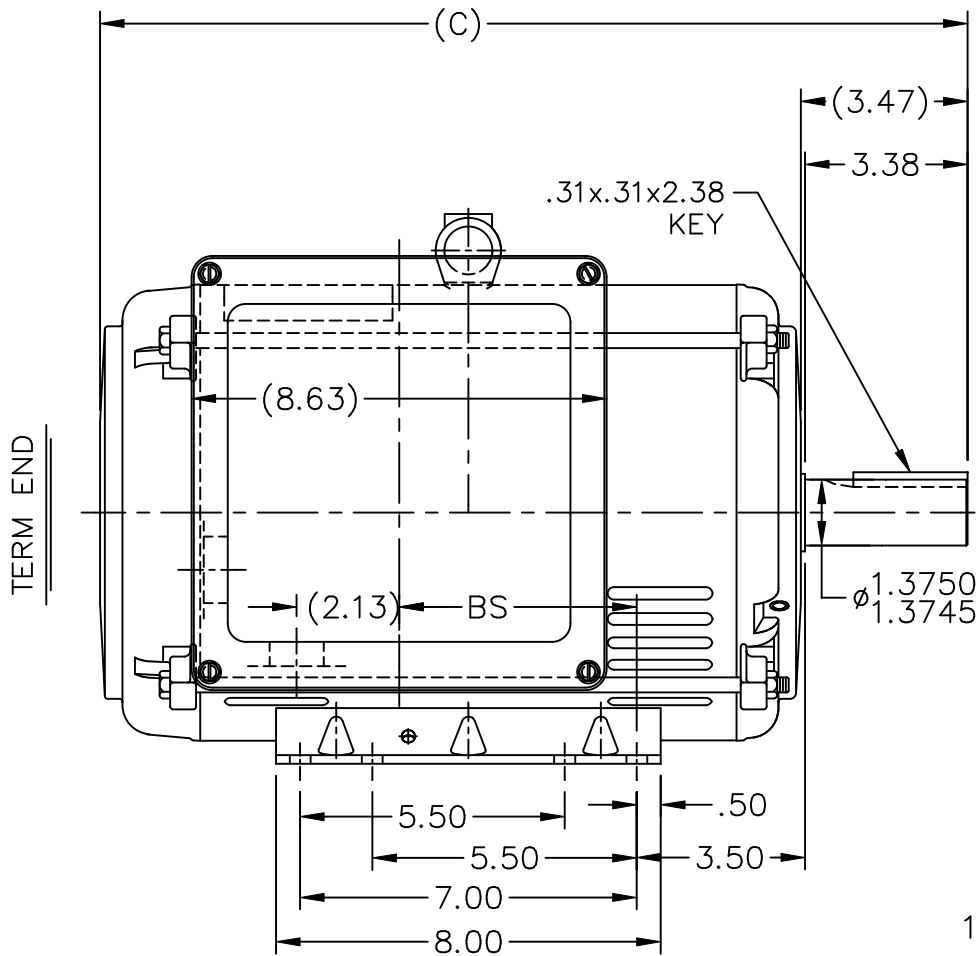
Nameplate Specifications

Output HP	10 Hp	Output KW	7.5 kW
Frequency	60 Hz	Voltage	208-230 V
Current	49.0-44.0 A	Speed	1730 rpm
Service Factor	1.15	Phase	1
Efficiency	82.5 %	Power Factor	89
Duty	Continuous	Insulation Class	F
Design Code	L	KVA Code	G
Frame	215T	Enclosure	Drip Proof
Thermal Protection	No Protection	Ambient Temperature	40 °C
Drive End Bearing Size	307	Opp Drive End Bearing Size	206
UL	Recognized	CSA	Y
CE	Y	IP Code	22
Number of Speeds	1		

Technical Specifications

Electrical Type	Capacitor Start Capacitor Run	Starting Method	Across The Line
Poles	4	Rotation	Selective Counterclockwise
Resistance Main	0 Ohms	Mounting	Rigid Base
Motor Orientation	Horizontal	Drive End Bearing	Ball
Opp Drive End Bearing	Ball	Frame Material	Rolled Steel
Shaft Type	T	Overall Length	19.29 in
Frame Length	12.40 in	Shaft Diameter	1.375 in
Shaft Extension	3.38 in	Assembly/Box Mounting	F1 ONLY
Connection Drawing	A-EE9048MF-LN	Outline Drawing	A-SS88686LN-1240


This is an uncontrolled document once printed or downloaded and is subject to change without notice. Date Created:09/07/2022



NOTES:

1. NAMEPLATE TO BE READ FROM C'BOX SIDE OF MOTOR.
2. DASH 965 TO BE READ FROM OPPOSITE SHAFT END.

DASH	FR.	C	BS
965	213T	16.54	3.44
1115	213/15T	18.04	4.94
1240	215T	19.29	6.19

				TOLERANCES UNLESS SPECIFIED			DRAWN RWR 01-22-2008			
				DEC.	INCHES		CHK MSG 01-25-2008			
				.X	±.1		APPD EH 01-25-2008			
				.XX	±.03		SCALE 1=4			
				.XXX	±.005		REF B-SS88686LE			
				.XXXX	±.0005	TITLE OUTLINE	FMF ISAAC#07-1847			
				ANG	±7'30"	210 FR. - DR. PR. - 1 PHASE	PREV			
NO.	REVISION	BY & DATE	CHK	ANG	FINISH					
			RFP	01-25-2008	CAD FILE SS88686LN	SIZE	DRAWING NO.	PAGE	OF	REV.
						A	SS88686LN			

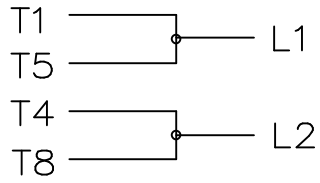
THIS DRAWING IN DESIGN AND DETAIL IS OUR PROPERTY AND MUST NOT BE USED EXCEPT IN CONNECTION WITH OUR WORK ALL RIGHTS OF DESIGN AND INVENTION ARE RESERVED THIS IS AN ELECTRONICALLY GENERATED DOCUMENT - DO NOT SCALE THIS PRINT

```
ERROR: undefined
OFFENDING COMMAND: en
```

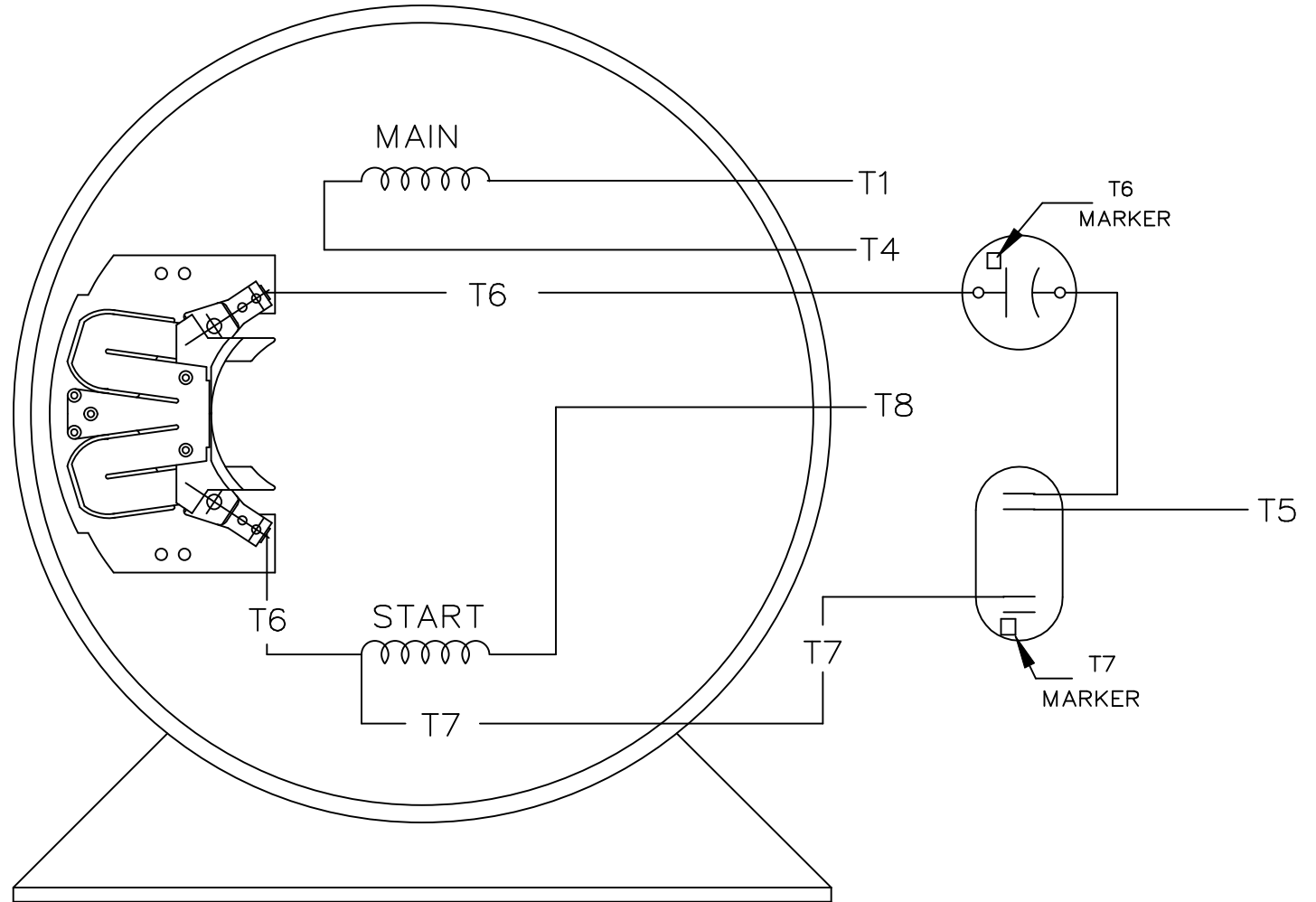
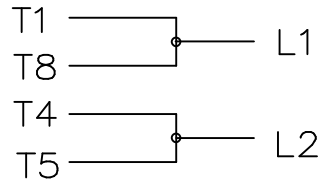
```
STACK:
```

```
-dictionary-
/Pscript_WinNT_Compat
-dictionary-
```

C.W. ROTATION



C.C.W. ROTATION



SINGLE VOLTAGE
CAPACITOR START
CAPACITOR RUN
REVERSIBLE

VIEW OF TERMINAL END

				TOLERANCES UNLESS SPECIFIED			DRAWN JJB 03-18-2008		
				DEC.	INCHES		CHK ML 03-18-2008		
				.X	±.1		APPD EH 03-18-2008		
				.XX	±.02		SCALE 1=1		
				.XXX	±.005		REF		
				.XXXX	±.0005	MAT'L.	FMF		
NO.	REVISION	BY & DATE	CHK	ANG	±7'30"	FINISH	PREV		
THIS DRAWING IN DESIGN AND DETAIL IS OUR PROPERTY AND MUST NOT BE USED EXCEPT IN CONNECTION WITH OUR WORK ALL RIGHTS OF DESIGN AND INVENTION ARE RESERVED THIS IS AN ELECTRONICALLY GENERATED DOCUMENT - DO NOT SCALE THIS PRINT			RFP	CAD FILE EE9048MF-LN			SIZE A	DRAWING NO. EE9048MF-LN	PAGE OF
			DIST LB						REV.

```
ERROR: syntaxerror  
OFFENDING COMMAND: --nostringval--
```

```
STACK:
```

```
-dictionary-  
-dictionary-  
/Pscript_WinNT_Compat  
-dictionary-
```



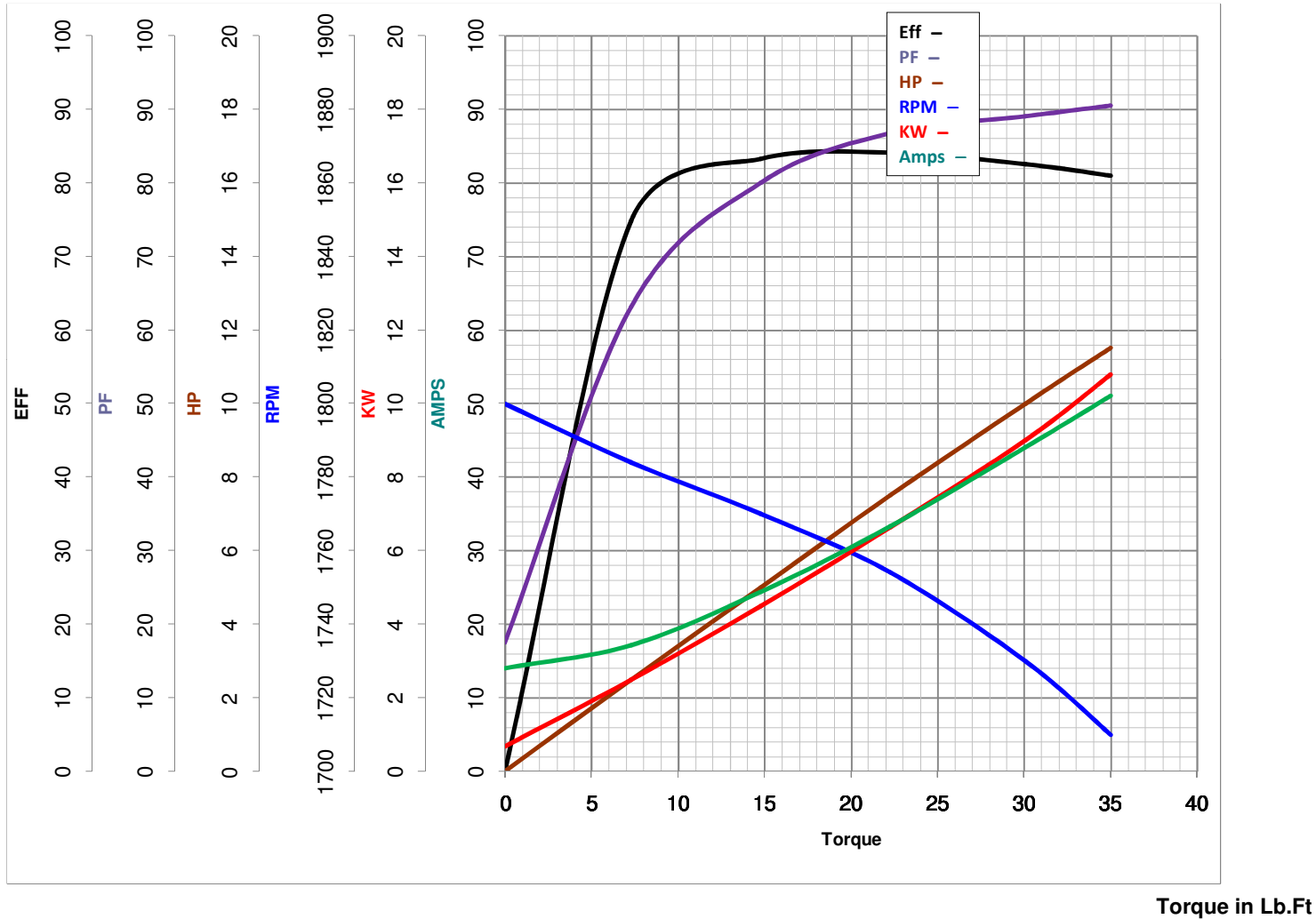
LEESON ELECTRIC CORPORATION
 TYPICAL PERFORMANCE CURVE for AC MOTOR

Model No LM24684

Curve at 230 Volts HP 10.00 PHASE 1
60 HZ
10 HP VOLTS 208-230

Catalog No LM24684BD

HZ 60 RPM 1730



FL TORQUE 30.1 Lb.Ft
 BD TORQUE 67.5 Lb.Ft
 LR TORQUE 47.4 Lb.Ft

FL AMPS 49-44
 PU TORQUE 47.0 Lb.Ft
 LR AMPS 260

WINDING BK104121-2

Date 3/27/2018