

PRODUCT INFORMATION PACKET



Model No: LM24682
Catalog No: LM24682
Air Compressor Motor, 5 HP, 1 Ph, 60 Hz, 208-230 V, 1800 RPM, 184T Frame, DP



Regal and Leeson are trademarks of Regal Rexnord Corporation or one of its affiliated companies.
©2022 Regal Rexnord Corporation, All Rights Reserved. MC017097E





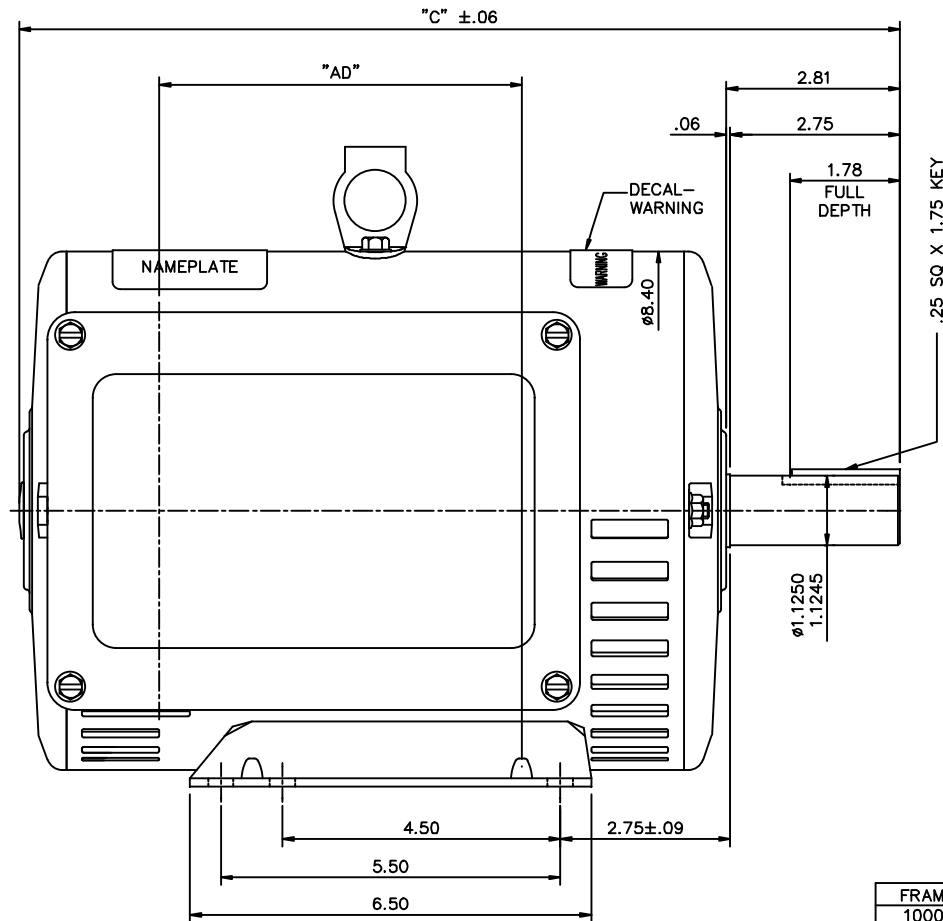
Nameplate Specifications

Output HP	5 Hp	Output KW	3.7 kW
Frequency	60 Hz	Voltage	208-230 V
Current	22.0-20.0 A	Speed	1750 rpm
Service Factor	1.15	Phase	1
Efficiency	84 %	Power Factor	98
Duty	Continuous	Insulation Class	F
Design Code	NO DESIGN CODE	KVA Code	G
Frame	184T	Enclosure	Drip Proof
Thermal Protection	No Protection	Ambient Temperature	40 °C
Drive End Bearing Size	6206	Opp Drive End Bearing Size	6205
UL	Recognized	CSA	Y
CE	Y	IP Code	22
Number of Speeds	1		

Technical Specifications

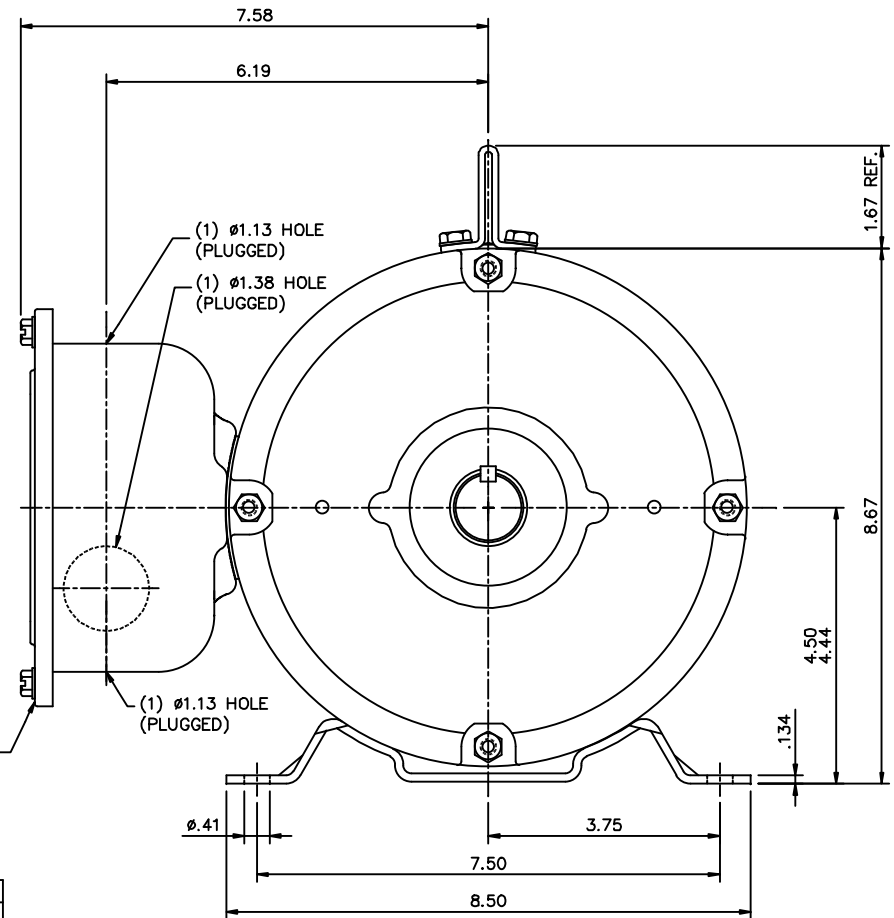
Electrical Type	Capacitor Start Capacitor Run	Starting Method	Across The Line
Poles	4	Rotation	Selective Counterclockwise
Resistance Main	0 Ohms	Mounting	Rigid Base
Motor Orientation	Horizontal	Drive End Bearing	Ball
Opp Drive End Bearing	Ball	Frame Material	Rolled Steel
Shaft Type	T	Overall Length	15.21 in
Frame Length	11.00 in	Shaft Diameter	1.125 in
Shaft Extension	2.75 in	Assembly/Box Mounting	F1 ONLY
Outline Drawing	035655LN-1100	Connection Drawing	005018.01LN

This is an uncontrolled document once printed or downloaded and is subject to change without notice. Date Created:11/28/2022




FRAME	"C"	"AD"
1000	14.21	5.88
1050	14.71	6.38
1100	15.21	6.88
1150	15.71	7.38
1200	16.21	7.88
1250	16.71	8.38

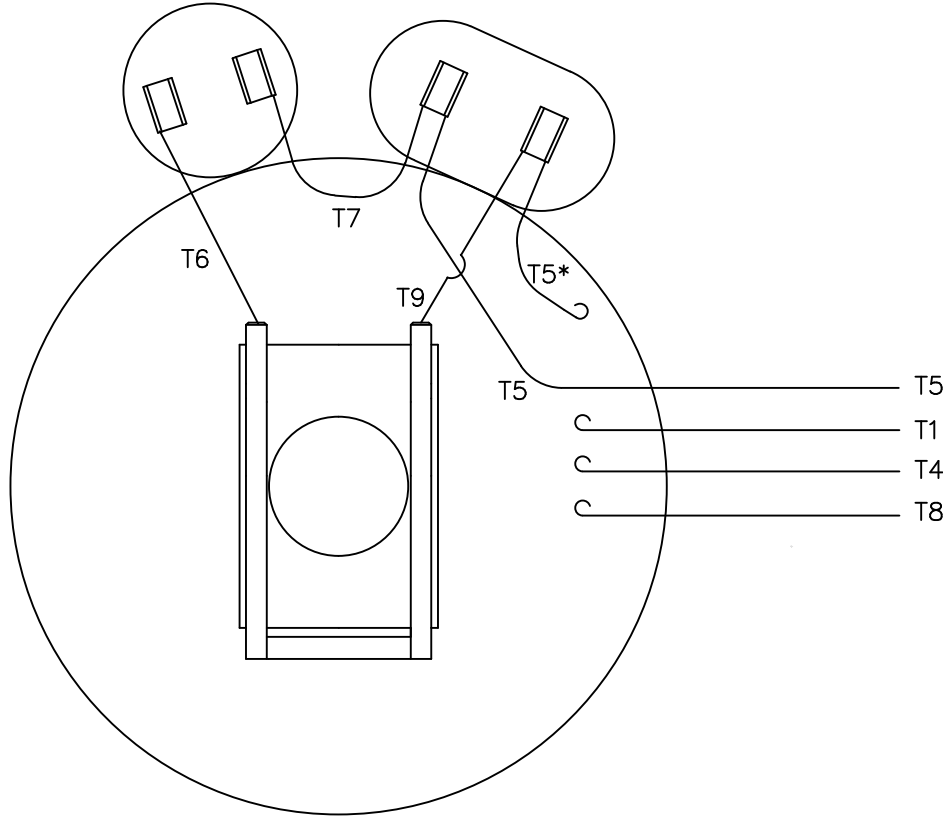
DECAL -
CONNECTION
UNDERCOVER



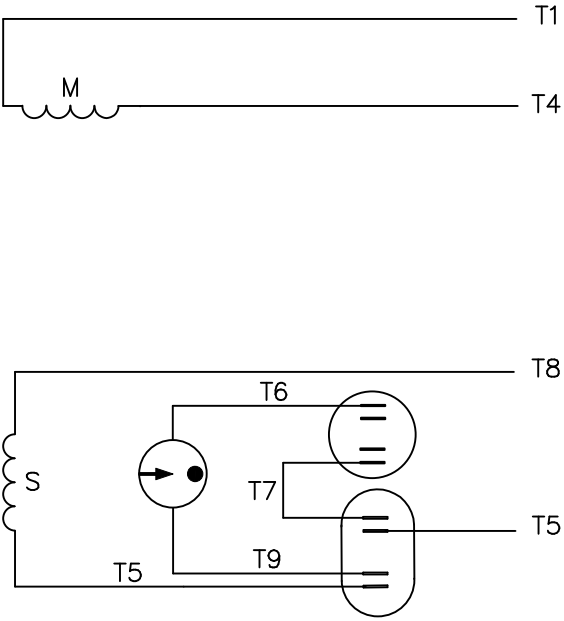
GASKETS THROUGHOUT

				TOLERANCES UNLESS SPECIFIED			DRAWN AK 12/27/11	
				DEC.	INCHES		CHK JD 12/27/11	
				.X	±.1	TITLE OUTLINE- 180T FRAME DRIP PROOF- RIGID	APPD	
				.XX	±.03		SCALE	1=1
				.XXX	±.005		REF	
01	C FACE SPEC REMOVED AS PER ECN# 23716	JD 03/26/2012		.XXXX	±.0005	MAT'L	FMF	LM24682
NO.	REVISION	BY & DATE	CHK	ANG	±1/2'	FINISH	PREV	
THIS DRAWING IN DESIGN AND DETAIL IS OUR PROPERTY AND MUST NOT BE USED EXCEPT IN CONNECTION WITH OUR WORK ALL RIGHTS OF DESIGN AND INVENTION ARE RESERVED THIS IS AN ELECTRONICALLY GENERATED DOCUMENT - DO NOT SCALE THIS PRINT						RFP	CAD FILE	035655LN
						DIST	SIZE	DRAWING NO.
							B	035655LN
								REV. 01

VIEW FROM OUTSIDE OF MOTOR AT SWITCH END.




LINE LEADS



ROTATION FACING LEAD END	L1	L2
C.C.W.	T1,T8	T4,T5
C.W.	T1,T5	T4,T8

* THIS LEAD MAY BE WHITE

				TOLERANCES UNLESS SPECIFIED			DRAWN AK 08/28/09		
				DEC.	INCHES		CHK KVN 08/28/09		
				.X	±.1		APPD AK 08/28/09		
				.XX	±.01		SCALE 1=1		
				.XXX	±.005		REF		
				.XXXX	±.0005	MAT'L. DECAL - 004018	FMF LM24718		
NO.	REVISION	BY & DATE	CHK	ANG	±1/2"	FINISH	PREV		
THIS DRAWING IN DESIGN AND DETAIL IS OUR PROPERTY AND MUST NOT BE USED EXCEPT IN CONNECTION WITH OUR WORK ALL RIGHTS OF DESIGN AND INVENTION ARE RESERVED THIS IS AN ELECTRONICALLY GENERATED DOCUMENT - DO NOT SCALE THIS PRINT			RFP		CAD FILE 00501801LN	SIZE A	DRAWING NO. 005018-01LN	REV.	
			DIST BRF-NLV						

THIS DRAWING IN DESIGN AND DETAIL IS OUR PROPERTY AND MUST NOT BE USED EXCEPT IN CONNECTION WITH OUR WORK ALL RIGHTS OF DESIGN AND INVENTION ARE RESERVED THIS IS AN ELECTRONICALLY GENERATED DOCUMENT - DO NOT SCALE THIS PRINT



**2100 WASHINGTON ST.
GRAFTON, WI
PH. 262-277-8810**

CERTIFICATION DATA SHEET

CONN. DIAGRAM: 005018.01LN

CATALOG # : LM24682

OUTLINE: 035655LN-1100

WINDING #: K84104 2

MOUNTING: F1 ONLY

TYPICAL MOTOR PERFORMANCE DATA

HP	kW	SYNC. RPM	F.L. RPM	FRAME	ENCLOSURE	KVA CODE	DESIGN
5	3.70	1800	1750	184T	DP	G	NO DESIGN CODE

PH	Hz	VOLTS	AMPS	START TYPE	DUTY	INSL	S.F.	AMB°C
1	60	208-230	22-20	ACROSS THE LINE	CONTINUOUS	F4	1.15	40

FULL LOAD EFF: 84	3/4 LOAD EFF: 84.3	1/2 LOAD EFF: 80.8	GTD. EFF	ELEC. TYPE
FULL LOAD PF: 98	3/4 LOAD PF: 96.6	1/2 LOAD PF: 94.3	81.5	CAP START CAP RUN

F.L. TORQUE	LOCKED ROTOR AMPS	L.R. TORQUE	B.D. TORQUE	F.L. RISE°C
15 LB-FT	131.5	34.9 LB-FT 233 %	39 LB-FT 260 %	60

SOUND PRESSURE @ 3 FT.	SOUND POWER	ROTOR WK^2	MAX. WK^2	SAFE STALL TIME	STARTS / HOUR	APPROX. MOTOR WGT
- dB	- dB	0 LB-FT^2	- LB-FT^2	10 SEC.	-	89 LBS.

***** SUPPLEMENTAL INFORMATION *****

DE BRACKET TYPE	ODE BRACKET TYPE	MOUNT TYPE	ORIENTATION	SEVERE DUTY	HAZARDOUS LOCATION	DRIP COVER	SCREENS	PAINT
STANDARD	STANDARD	RIGID	HORIZONTAL	FALSE	NONE	FALSE	NONE	GRAY - GE

BEARINGS		GREASE	SHAFT TYPE	SPECIAL DE	SPECIAL ODE	SHAFT MATERIAL	FRAME MATERIAL
DE	ODE						
BALL	BALL						
6206	6205	POLYREX EM	T	NONE	NONE	AISI 1045 (C-240)	ROLLED STEEL

THERMO-PROTECTORS				THERMISTORS	CONTROL	SPACE HEATERS
THERMOSTATS	PROTECTORS	WDG RTDs	BRG RTDs			
NONE	NOT	NONE	NONE	NONE	FALSE	NONE VOLTS

*

N

O

T

E

S

*

INVERTER TORQUE: NONE
INV. HP SPEED RANGE: NONE
ENCODER: NONE NONE NONE NONE NONE PPR
BRAKE: NONE NONE NONE P/N NONE NONE NONE FT-LB NONE V NONE Hz

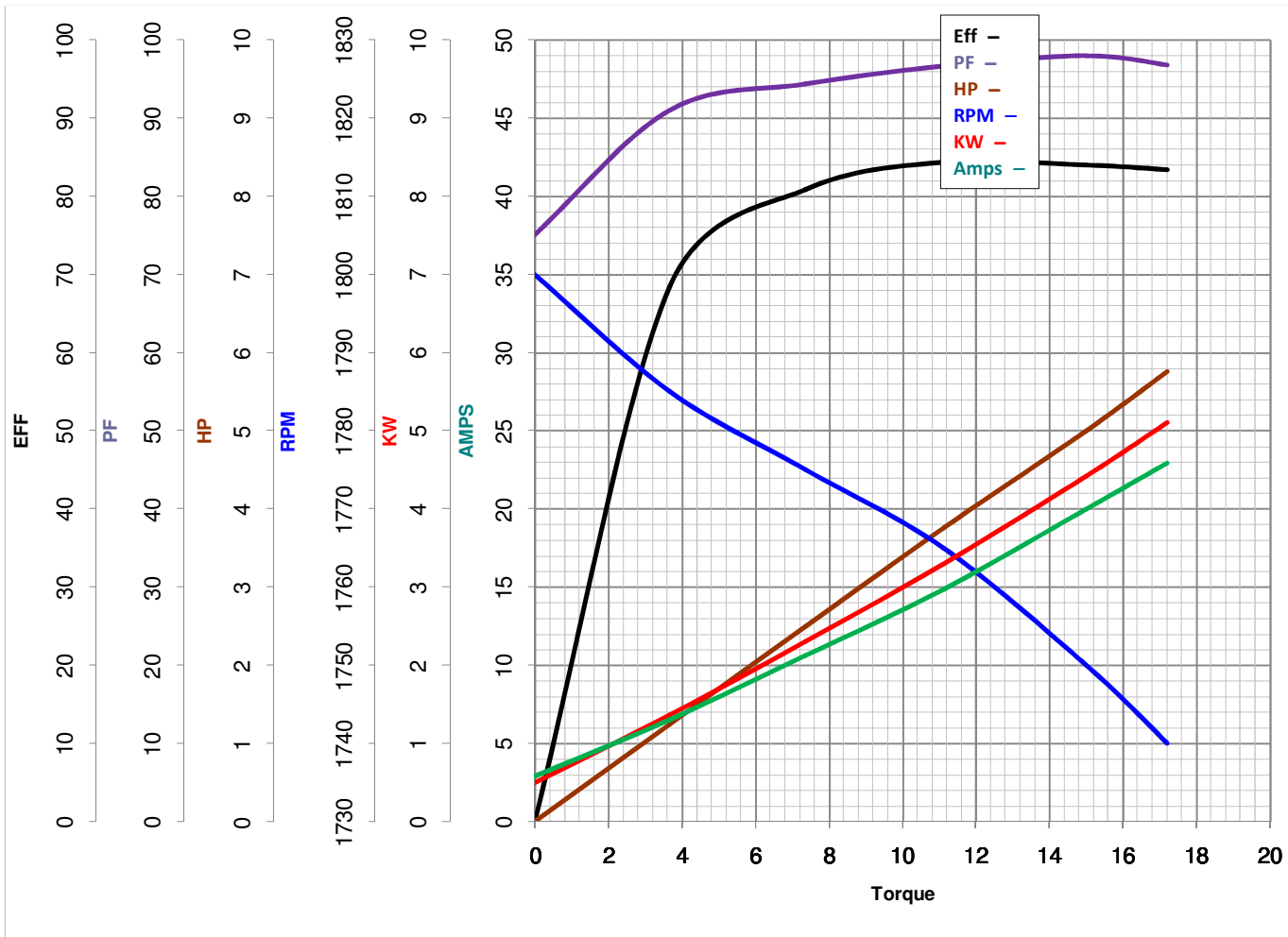
Model No LM24682Catalog No LM24682DD

LEESON ELECTRIC CORPORATION

TYPICAL PERFORMANCE CURVE for AC MOTOR

Curve at

230
60
5

Volts
HZ
HP
HP 5.00PHASE 1VOLTS 208-230HZ 60RPM 1750

Torque in Lb.Ft

FL TORQUE 15 Lb.Ft
 BD TORQUE 39.0 Lb.Ft
 LR TORQUE 34.9 Lb.Ft
 WINDING K84104-2

FL AMPS 22-20
 PU TORQUE 29.3 Lb.Ft
 LR AMPS 131.5
 Date 4/23/2018

EC Declaration of Conformity

The undersigned representing
the manufacturer:

Regal Beloit America
100 East Randolph St.
Wausau, WI 54401

and the authorized representative
established within the Community:

Marathon Electric UK
6F Thistleton Road Ind. Estate
Market Overton
Oakham, Rutland LE15 7PP UK

are committed to providing customers with products that comply with applicable regulations and international protocols to which they are subject, including the requirements of the European Parliament Directive on the Harmonization of the laws relating to electrical equipment designed for use within certain voltage limits (2014/35/EU).

Regal Beloit America declares that the following product(s), to which this declaration relates, are in conformity with the relevant sections of the EC standards listed below.

This statement supersedes any statements previously issued pertaining to the product(s) listed below and is subject to change without notice.

Model No : LM24682

(Model No. may contain prefix and/or suffix characters)

Catalog No : LM24682

Rework No : N/A

Directives :

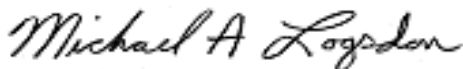
Low Voltage Directive 2014/35/EU

Harmonized Standards Used :

EN 60034-1: 2010 (IEC 60034-1: 2010)


EN 60034-5: 2001/A1:2007 (IEC 60034-5: 2000/A1:2006)

Authorized Representative:



Michael A. Logsdon
Vice President, Technology

Authorized Representative in the Community:



Julian Clark
Marketing Engineer

Created on 09/01/2022

CE 22