

PRODUCT INFORMATION PACKET



Model No: LM24190

Catalog No: LM24190

General Purpose Motor, 15 & 15 HP, 3 Ph, 60 & 50 Hz, 230/460 & 190-208/380-415 V, 1800 & 1500 RPM,
254T Frame, DP



Regal and Leeson are trademarks of Regal Rexnord Corporation or one of its affiliated companies.

©2023 Regal Rexnord Corporation, All Rights Reserved. MC017097E



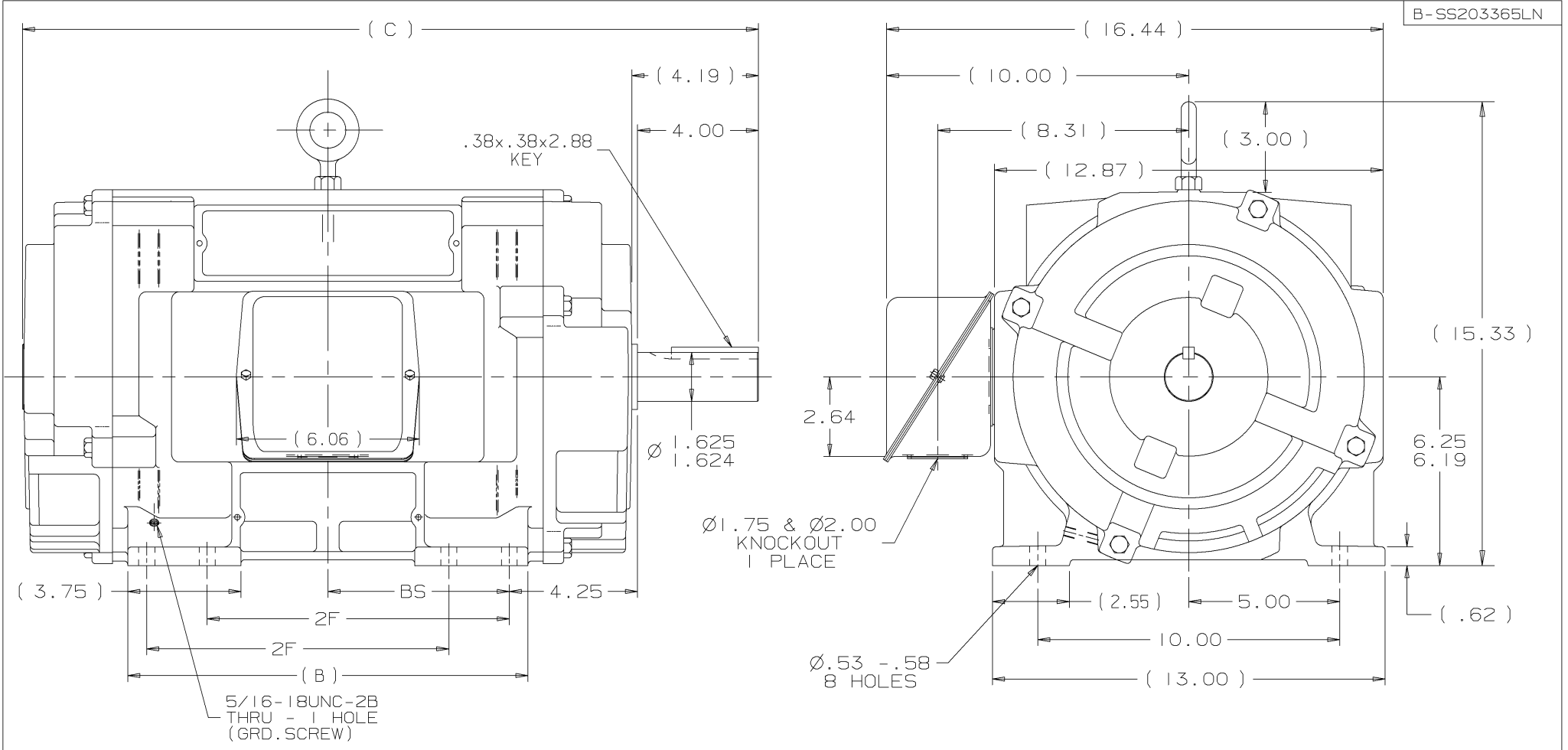


Nameplate Specifications

Phase	3	Output HP	15 & 15 Hp
Output KW	11.2 & 11.2 kW	Voltage	230/460 & 190-208/380-415 V
Speed	1775 & 1470 rpm	Service Factor	1.25 & 1.15
Frame	254T	Enclosure	Drip Proof
Thermal Protection	No Protection	Efficiency	93 & 91 %
Ambient Temperature	40 °C	Frequency	60 & 50 Hz
Current	37/18.5 & 44-42/22-21 A	Power Factor	82
Duty	Continuous	Insulation Class	F
Design Code	B	KVA Code	G
Drive End Bearing Size	309	Opp Drive End Bearing Size	208
UL	Recognized	CSA	Y
CE	Y	IP Code	22
Number of Speeds	1		

Technical Specifications

Electrical Type	Squirrel Cage Induction Run	Starting Method	Across The Line
Poles	4	Rotation	Reversible
Resistance Main	.66 Ohms	Mounting	Rigid Base
Motor Orientation	Horizontal	Drive End Bearing	Ball
Opp Drive End Bearing	Ball	Frame Material	Cast Iron
Shaft Type	T	Overall Length	24.37 in
Frame Length	12.75 in	Shaft Diameter	1.625 in
Shaft Extension	4 in	Assembly/Box Mounting	F1/F2 CAPABLE
Connection Drawing	A-EE7308-LN	Outline Drawing	B-SS203365LN-1275



- NOTES:
 1. BOX CAN BE ROTATED IN 90° STEPS.
 2. BOX CAN BE MOUNTED ON OPPOSITE SIDE BY REMOVING BRACKETS AND TURNING FRAME 180°.
 3. NAMEPLATE TO BE READ FROM CONDUIT BOX SIDE OF MOTOR.

DASH	FRAME	B	C	2F	BS	REV	DATE	CHANGE	NAME	DRS	NAME	DATE	APPD	BY	DATE
1275	254T	11.75	22.87	8.25	5.25	2	02-04-2000	REVISED TO NEC CONDUIT BOX CN 28428	BJW	DRS	BJW	02-04-2000	TJB	TJB	03-29-2001
1425	256T	13.25	24.37	10.00	6.00	3	03-29-2001	CORRECTED 2F AND BS DIMENSIONS CN 30749	TJB	TJB	TJB	03-29-2001	DRS	DRS	05-24-2001
						4	05-24-2001	UPDATED C*BOX GEOMETRY CN 28427	DRS	DRS	DRS	05-24-2001			



UNLESS OTHERWISE SPECIFIED DIMENSIONS ARE IN INCHES
 TOL. ON XX±.03 XXX±.005 XXXX±.0005 ANGLES± 7'30"

MAX. SURFACE ROUGHNESS
 UNLESS OTHERWISE NOTED

FINISH

MATERIAL

PART NAME OUTLINE
 250T FR - DR.PR. - CAST IRON

DRWG NO
 B-SS203365LN

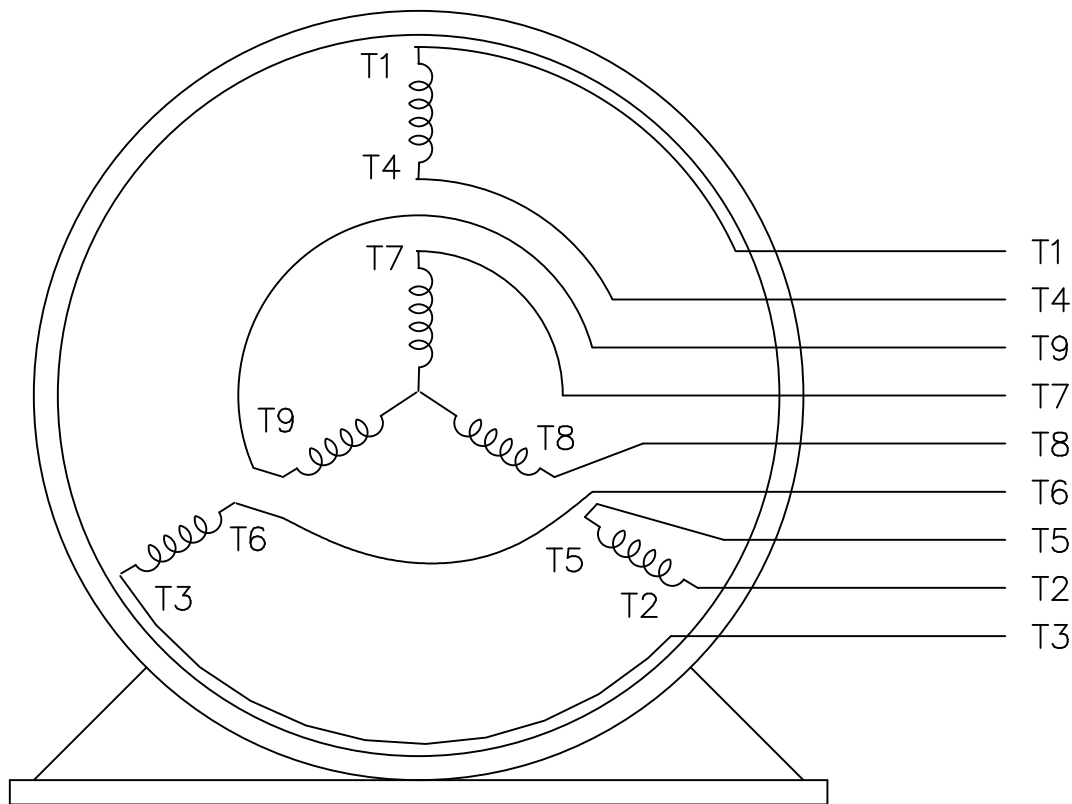
PURCHASED CADD FILE NO. SS203365LN

THREE PHASE
DUAL VOLTAGE MOTOR

HIGH VOLTAGE



LOW VOLTAGE



VIEW OF TERMINAL END

REF.
WINDING DIAGRAM

T8Y, T2Y, T2BL, T4BX, T2EC, T2G
T6BZ, T2B, T6BL, T4AV, T6B, T4B

OPTIONAL CORD
CONNECTION

L1 — WHITE —
L2 — RED —
L3 — BLACK —

NO.	REVISION	BY & DATE	CHK	TOLERANCES UNLESS SPECIFIED		FINISH	DRAWN	ML	GK	DATE	SCALE	REV.
				DEC.	INCHES							
				.X	±.1		BLR	ML	GK	06/11/1999	1=1	
3	ADDED THE OPTIONAL CORD CONNECTION	RDH 04/24/2003	DRS	.XX	±.02	TITLE CONNECTION DIAGRAM						
2	RE-ISSUE, ADDED '-' TO PART NUMBER	BLR 08/09/1999	GK	.XXX	±.005	3∅ - DUAL VOLTAGE MOTOR						
1	NEW DRAWING	BLR 06/18/1999	GK	.XXXX	±.0005	MAT'L.						
				ANG	±7'30"							
			RFP			CAD FILE EE7308LN	SIZE A	DRAWING NO. EE7308-LN	PAGE	OF		REV. 3
			DIST WP									



THIS DRAWING IN DESIGN AND DETAIL IS OUR PROPERTY AND MUST NOT BE USED EXCEPT IN CONNECTION WITH OUR WORK ALL RIGHTS OF DESIGN AND INVENTION ARE RESERVED THIS IS AN ELECTRONICALLY GENERATED DOCUMENT - DO NOT SCALE THIS PRINT

Data Sheet

Date: 1/30/2018

LM24190



Data @ **460 V**

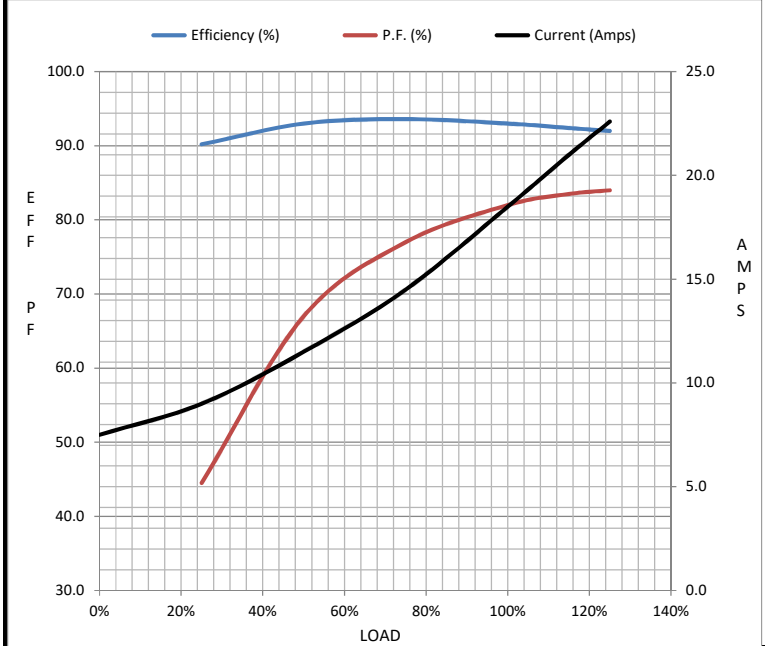
Motor Load Data

Load	0%	25%	50%	75%	100%	115%	125%	LR
Current (Amps)	7.5	9.0	11.5	14.5	18.5	21.0	22.6	107
Torque (ft-lb)	0.00	11.0	22.0	33.0	44.5	51.0	55.5	78.0
RPM	1800	1795	1785	1780	1775	1770	1765	0
Efficiency (%)		90.2	93.0	93.6	93.0	92.4	92.0	
P.F. (%)	4.0	44.5	67.0	77.0	82.0	83.5	84.0	40.5

Motor Speed Data

	LR	Pull-Up	BD	Rated	Idle
Speed (RPM)	0	900	1650	1775	1800
Current (Amps)	107	96.0	66.0	18.5	7.5
Torque (ft-lb)	78.0	75.0	121	44.5	0.00

Information Block				
HP	15.0			
Sync. RPM	1800			
Frame	254			
Enclosure	DP			
Construction	TDN			
Voltage	230/460#190-208/380-415 V			
Frequency	60 Hz			
Design	B			
LR Code letter	G			
Service Factor	1.15			
Temp Rise @ FL	25 °C			
Duty	CONT			
Ambient	40 °C			
Elevation	1,000 feet			
Rotor/Shaft wk ²	2.40 Lb-Ft ²			
Ref Wdg	K2544149 NONE			
Sound Pressure @ 1M	70 dBA			
VFD Rating	NONE			
Outline Dwg	B-SS203365LN-1275			
Conn. Diag	A-EE7308-LN			
Additional Specifications:				
0				
0				
EQUIV CKT (OHMS / PHASE)				
R1	R2	X1	X2	Xm
0.3860	0.6120	1.3610	0.9260	35.1540



Speed - Torque Curve

