

# PRODUCT INFORMATION PACKET

Model No: LM23721

Catalog No: LM23721

OBSOLETE - REPLACED BY LM21378 - 1,1800,TENV,182U,3/60/460

Regal and are trademarks of Regal Rexnord Corporation or one of its affiliated companies.  
©2022 Regal Rexnord Corporation, All Rights Reserved. MC017097E



### Nameplate Specifications

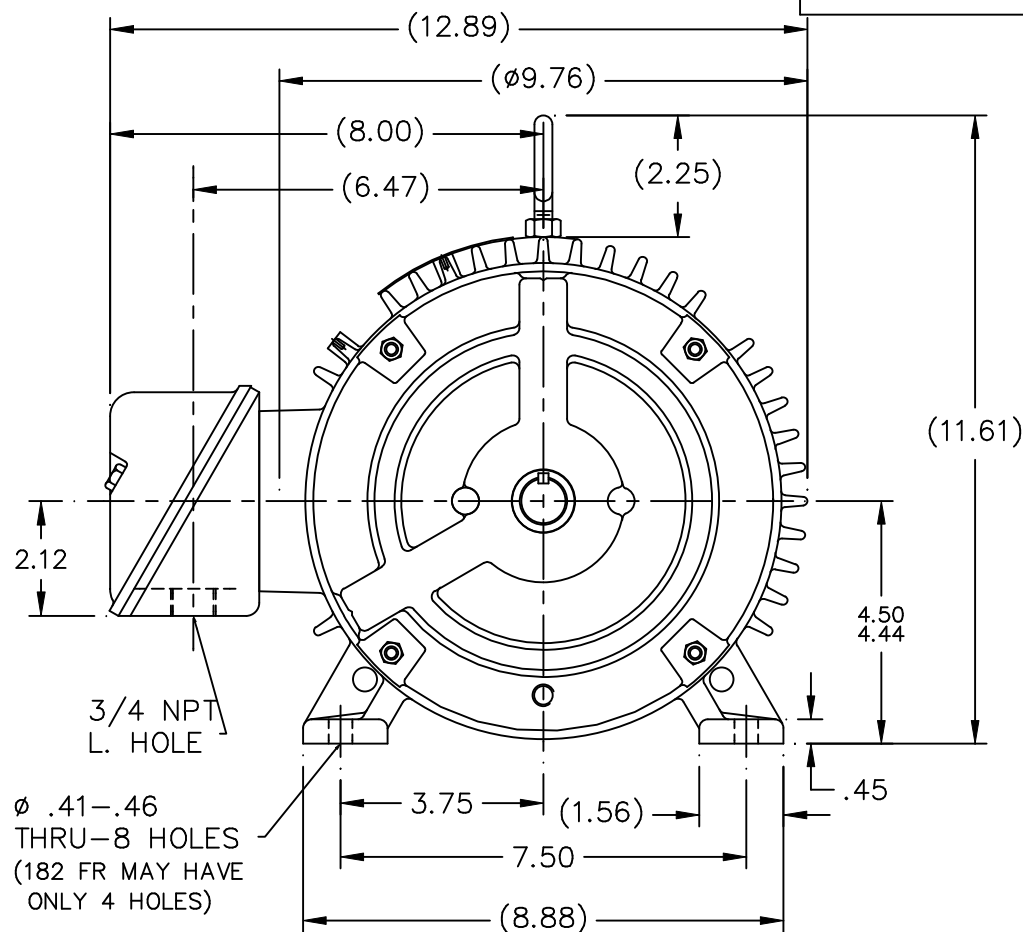
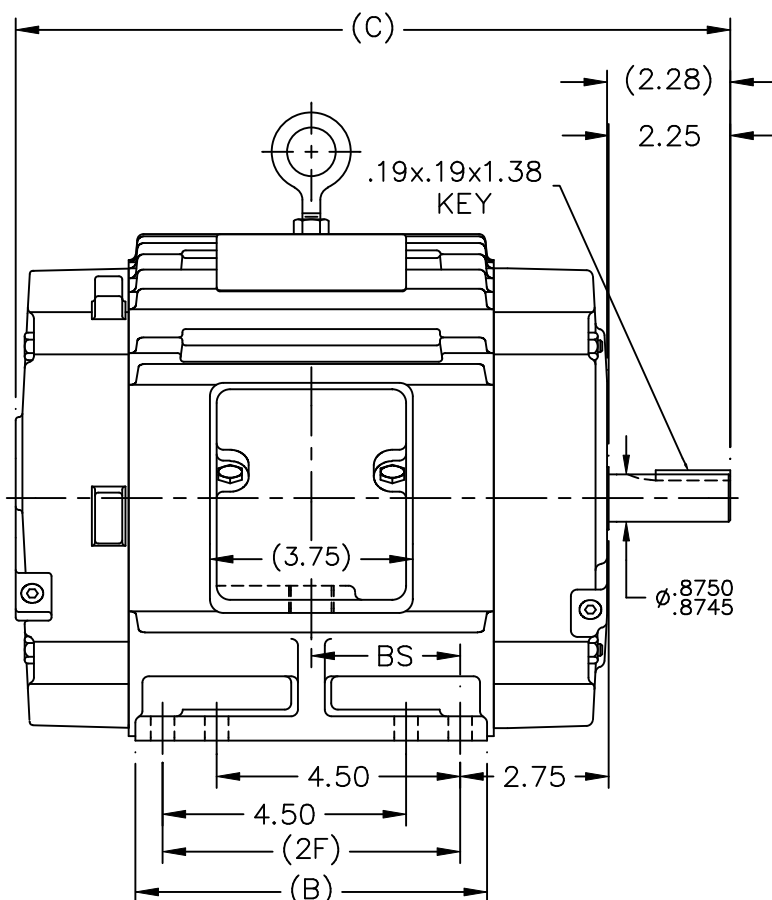
Output HP	1 Hp	Output KW	0.75 kW
Frequency	60 Hz	Voltage	460 V
Current	1.5 A	Speed	1770 rpm
Service Factor	1	Phase	3
Efficiency	86.5 %	Power Factor	75
Duty	Continuous	Insulation Class	F
Design Code	B	KVA Code	L
Frame	182U	Enclosure	Totally Enclosed Non Ventilated
Thermal Protection	No Protection	Ambient Temperature	65 °C
Drive End Bearing Size	206	Opp Drive End Bearing Size	205
UL	Recognized	CSA	Y
CE	Y	IP Code	43
Number of Speeds	1		

### Technical Specifications

Electrical Type	Squirrel Cage Induction Run	Starting Method	Across The Line
Poles	4	Rotation	Reversible
Resistance Main	13.4 Ohms	Mounting	Rigid Base
Motor Orientation	Horizontal	Drive End Bearing	Ball
Opp Drive End Bearing	Ball	Frame Material	Cast Iron
Shaft Type	U	Assembly/Box Mounting	F1/F2 CAPABLE
Outline Drawing	A-SS68737LN-575	Connection Drawing	A-EE7300-LN

This is an uncontrolled document once printed or downloaded and is subject to change without notice. Date Created:07/18/2022


SS68737LN



## NOTES:

1. CONDUIT BOX CAN BE ROTATED IN 90° STEPS.
2. CONDUIT BOX CAN BE MOUNTED ON OPPOSITE SIDE BY REMOVING BRACKETS AND TURNING FRAME 180°.
3. NAMEPLATE TO BE READ FROM CONDUIT BOX SIDE OF MOTOR

DASH	FR.	C	B	2F	BS	MOUNTING
575	182U	12.21	5.50	4.50	2.25	F1 ONLY
675	182U	13.21	6.50	5.50	2.75	F1 ONLY
675	184U	13.21	6.50	5.50	2.75	F1 OR F2

				TOLERANCES UNLESS SPECIFIED			DRAWN BJW 06-26-2000					
				DEC.	INCHES		CHK ML 06-26-2000					
3	REV'D TO SHOW STUDS ON D.E. OF MOTOR.CN29200-805	NJS 08-25-2000		.X	±.1		APPD TB 06-26-2000					
2	REVISED OUTLINE TO HAVE C'BOX FROM:	MSG 08-04-2000		.XX	±.03		SCALE 9=32					
2	A-SS68726LN CN 29200-179			.XXX	±.005	TITLE OUTLINE - TENV 180U FR. - 140FR. EXT. - CAST C'BOX			REF			
1	NEW DRAWING MU31620	BJW 06-26-2000		.XXXX	±.0005	MAT'L.			FMF			
NO.	REVISION	BY & DATE	CHK	ANG	±7'30"	FINISH			PREV			
THIS DRAWING IN DESIGN AND DETAIL IS OUR PROPERTY AND MUST NOT BE USED EXCEPT IN CONNECTION WITH OUR WORK ALL RIGHTS OF DESIGN AND INVENTION ARE RESERVED THIS IS AN ELECTRONICALLY GENERATED DOCUMENT - DO NOT SCALE THIS PRINT			RFP		CAD FILE SS68737LN			SIZE	DRAWING NO.	PAGE	OF	REV.
			DIST LB					A	SS68737LN		3	

ERROR: syntaxerror  
OFFENDING COMMAND: --nostringval--

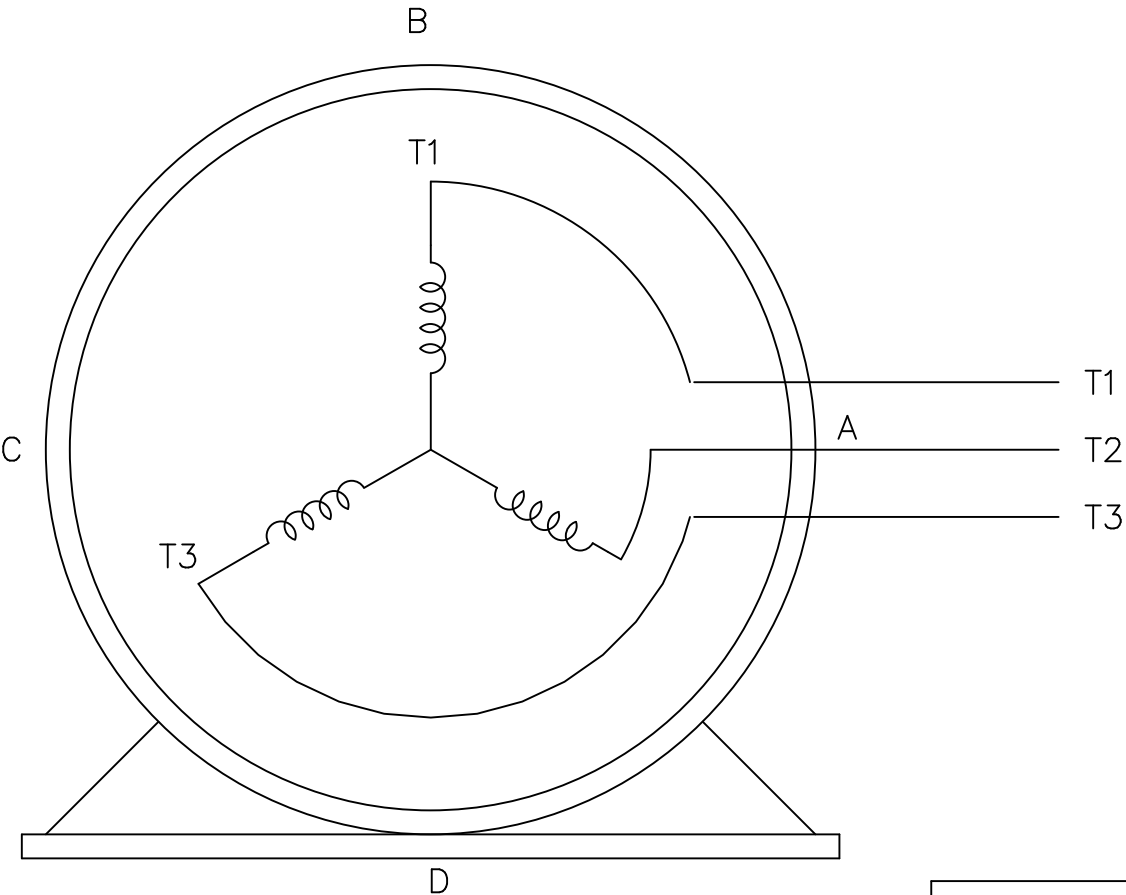
STACK:

/im  
-savelevel-

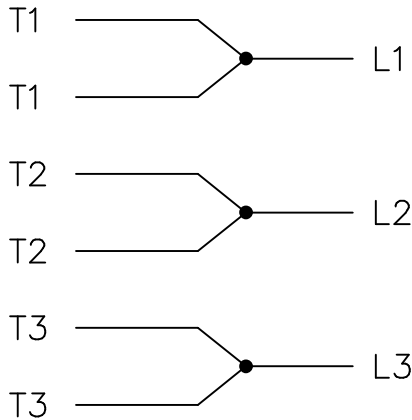
THREE PHASE – SINGLE VOLTAGE  
MOTOR – CONDUIT BOX @ 'A'

EE7300-LN

TO REVERSE ROTATION:  
INTERCHANGE ANY TWO LINE  
LEAD CONNECTIONS




IF MOTOR HAS  
6 LEADS



A-9806 DECAL

OPTIONAL CORD  
CONNECTION

L1 WHITE  
L2 RED  
L3 BLACK

			TOLERANCES UNLESS SPECIFIED			DRAWN BLR 08-13-1999		
			DEC.	INCHES		CHK	ML	08-13-1999
			.X	±.1		APPD	GK	08-13-1999
			.XX	±.02		SCALE 1=1		
2	ADDED OPTIONAL CORD CONNECTION PER MU47226	CTO 03-31-2004	PJB	.XXX	±.005	TITLE CONNECTION DIAGRAM SINGLE VOLT – 3Ø MOTOR		
1	NEW DRAWING	CTO 08-13-1999		.XXXX	±.0005	MAT'L.		
NO.	REVISION	BY & DATE	CHK	ANG	±7'30"	FINISH		
THIS DRAWING IN DESIGN AND DETAIL IS OUR PROPERTY AND MUST NOT BE USED EXCEPT IN CONNECTION WITH OUR WORK ALL RIGHTS OF DESIGN AND INVENTION ARE RESERVED THIS IS AN ELECTRONICALLY GENERATED DOCUMENT – DO NOT SCALE THIS PRINT			RFP	CAD FILE EE7300_LN			SIZE A	DRAWING NO. EE7300-LN
			DIST WP					PAGE OF 2