

PRODUCT INFORMATION PACKET



Model No: LM23695
Catalog No: LM23695
30,1200,TEFC,326TS,3/60/230/460

Regal and Leeson are trademarks of Regal Rexnord Corporation or one of its affiliated companies.
©2023 Regal Rexnord Corporation, All Rights Reserved. MC017097E





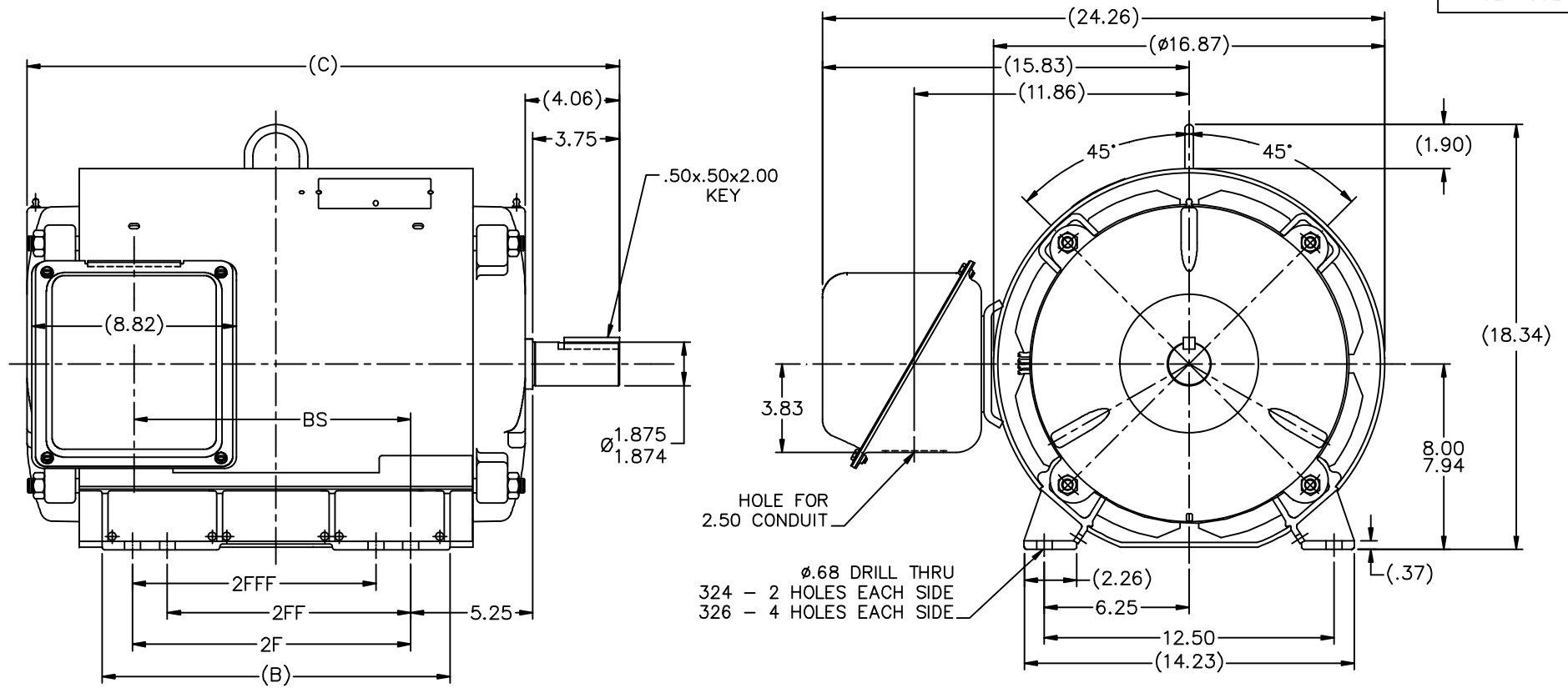
Nameplate Specifications

Phase	3	Output HP	30 & 25 Hp
Output KW	22.4 & 18.7 kW	Voltage	230/460 & 190/380 V
Speed	1175 & 970 rpm	Service Factor	1.25 & 1.15
Frame	326TS	Enclosure	Totally Enclosed Air Over
Thermal Protection	No Protection	Efficiency	91.7 & 90.2 %
Ambient Temperature	40 °C	Frequency	60 & 50 Hz
Current	75/37.5 & 76/38 A	Power Factor	81.5
Duty	Continuous	Insulation Class	F
Design Code	B	KVA Code	F
Drive End Bearing Size	311	Opp Drive End Bearing Size	309
UL	Recognized	CSA	Y
CE	N	IP Code	43
Number of Speeds	1		

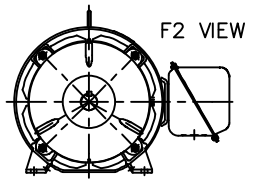
Technical Specifications

Electrical Type	Squirrel Cage Induction Run	Starting Method	Wye Start Delta Run
Poles	6	Rotation	Reversible
Resistance Main	.232 Ohms	Mounting	Rigid Base
Motor Orientation	Horizontal	Drive End Bearing	Ball
Opp Drive End Bearing	Ball	Frame Material	Rolled Steel
Shaft Type	TS	Assembly/Box Mounting	F1/F2 CAPABLE
Outline Drawing	XG2A1SS2-1700	Connection Drawing	A-EE7308AA-LN

This is an uncontrolled document once printed or downloaded and is subject to change without notice. Date Created:06/22/2023



- NOTES:
1. CONDUIT BOX CAN BE ROTATED IN 90° STEPS.
 2. NAMEPLATES TO BE READ FROM CONDUIT BOX SIDE OF MOTOR.



DASH	FRAME	C	BS	B	2F	2FF	2FFF
1550	324TS	24.07	10.62	13.52	10.50		
1700	326TS	25.57	12.12	15.02	12.00	10.50	10.50

		TOLERANCES UNLESS SPECIFIED					
		DEC.	INCHES				
		.X	±.1				
		.XX	±.03				
		.XXX	±.005				
		.XXXX	±.0005				
NO.	REVISION	BY & DATE	CHK	ANG	FINISH		
				RFP	CAD FILE XG2A1SS2	SIZE	DRAWING NO. PAGE OF REV.
				DIST		B	XG2A1SS2

THIS DRAWING IN DESIGN AND DETAIL IS OUR PROPERTY AND MUST NOT BE USED EXCEPT IN CONNECTION WITH OUR WORK ALL RIGHTS OF DESIGN AND INVENTION ARE RESERVED
THIS IS AN ELECTRONICALLY GENERATED DOCUMENT - DO NOT SCALE THIS PRINT



TITLE OUTLINE NEMA MOTORS
320TS FR. - TEAO - UE1

DRAWN WGJ 01-10-2012
CHK DD 01-10-2012
APPD
SCALE .225=1
REF
FMF
PREV

T12 _____
 T1 _____
 T6 _____ L1
 T7 _____

T2 _____
 T4 _____
 T8 _____ L2
 T10 _____

T3 _____
 T5 _____
 T9 _____ L3
 T11 _____

LOW VOLTAGE

T12 _____ L1
 T1 _____
 T4 _____
 T7 _____
 T2 _____
 T10 _____ L2

T5 _____
 T8 _____
 T3 _____ L3
 T11 _____

T6 _____
 T9 _____

HIGH VOLTAGE



VIEW OF TERMINAL END

					✓ UNLESS OTHERWISE SPECIFIED DIMENSIONS ARE IN INCHES TOL. ON XX±.02 XXX±.005 XXXX±.0005 ANGLES± 7°30"		
2	08-09-1999	RE-ISSUE, ADDED '-' TO PART NUMBER	BLR		MAX. SURFACE ROUGHNESS UNLESS OTHERWISE NOTED		DRAWN BY TRB 07-16-1999
1	06-18-1999	NEW DRAWING	TRB		FINISH		CHKD BY ML 06-18-1999
					MATERIAL		APPD BY GK 06-18-1999
REV	DATE	CHANGE	NAME	PART NAME 3 PHASE CONNECTION DIAGRAM 2/1 DELTA - 12 LEADS			DRWG NO A- EE7308AA-LN
					PURCHASED	CADD FILE NO.	EE7308AALN

ERROR: undefined
OFFENDING COMMAND: Pscrip
STACK: