

PRODUCT INFORMATION PACKET



Model No: LM21836

Catalog No: LM21836

OBSOLETE - NO REPLACEMENT FOR Obsolete in the US, replaced by LM34113 - 5,3600,TEFC,213UC,3/60/460

Regal and Leeson are trademarks of Regal Rexnord Corporation or one of its affiliated companies.

©2023 Regal Rexnord Corporation, All Rights Reserved. MC017097E





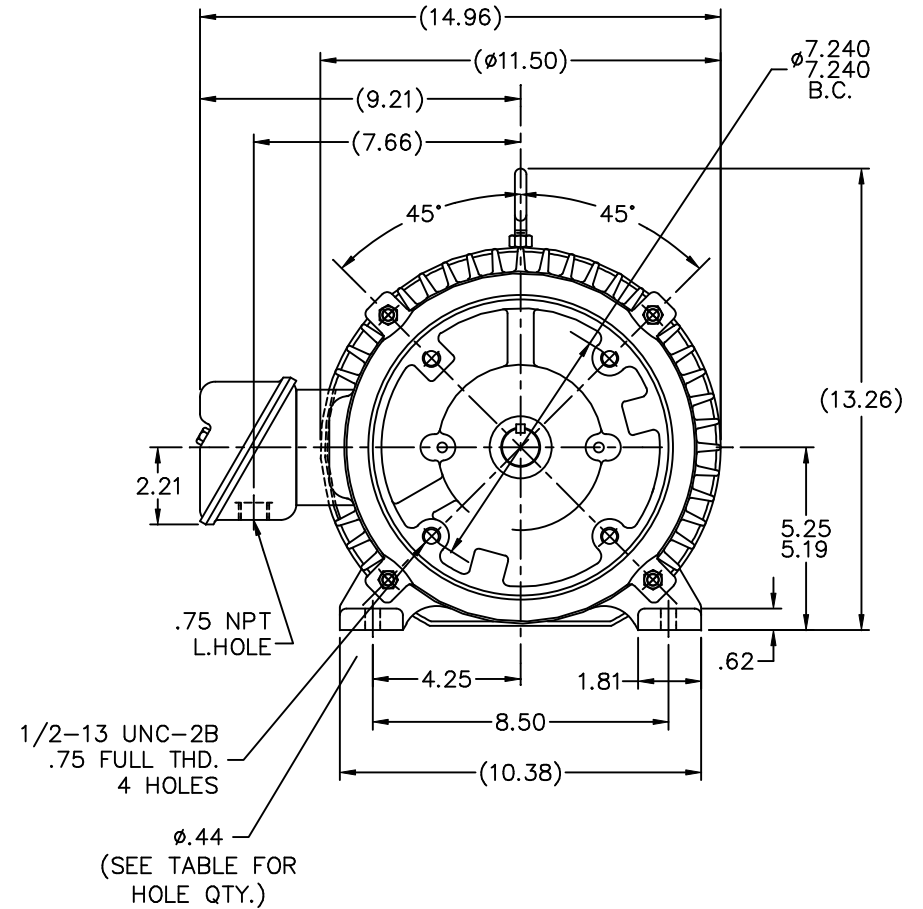
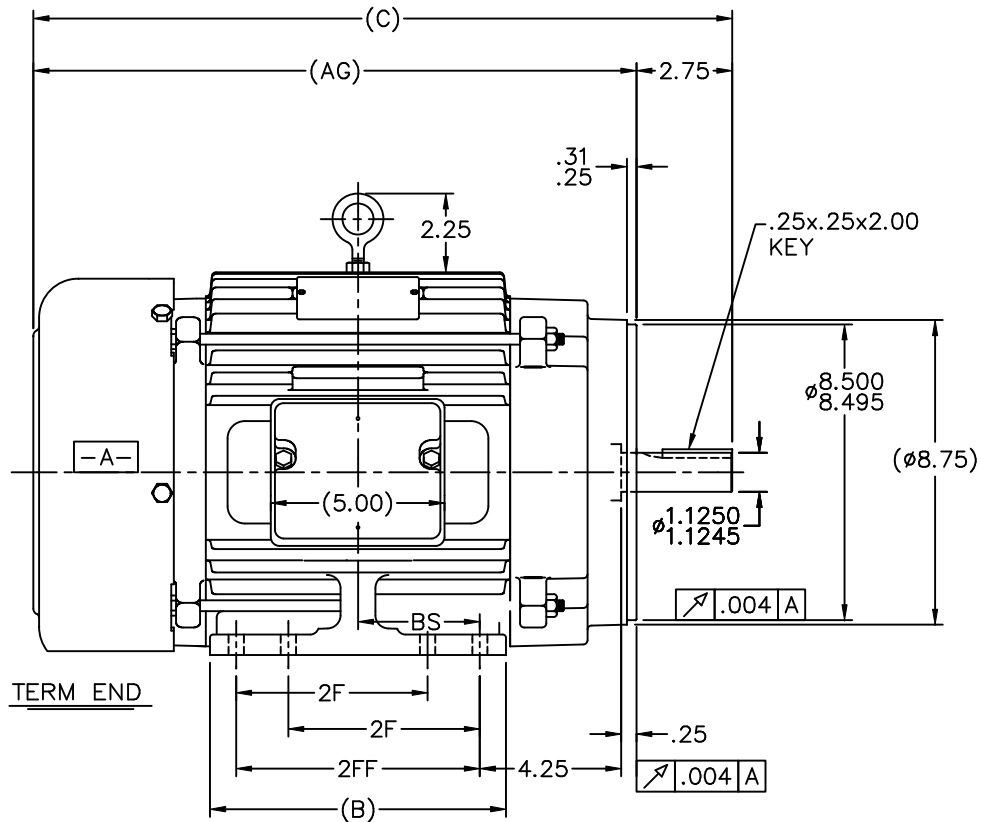
Nameplate Specifications

Phase	3	Output HP	5 Hp
Output KW	3.73 kW	Voltage	460 V
Speed	3530 rpm	Service Factor	1
Frame	213UC	Enclosure	Totally Enclosed Fan Cooled
Thermal Protection	No Protection	Efficiency	87.5 %
Ambient Temperature	65 °C	Frequency	60 Hz
Current	6.4 A	Power Factor	85
Duty	Continuous	Insulation Class	F
Design Code	B	KVA Code	G
Drive End Bearing Size	309	Opp Drive End Bearing Size	206
UL	Recognized	CSA	Y
CE	Y	IP Code	43
Number of Speeds	1		

Technical Specifications

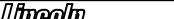
Electrical Type	Squirrel Cage Induction Run	Starting Method	Across The Line
Poles	2	Rotation	Reversible
Resistance Main	2.1 Ohms	Mounting	Rigid Base
Motor Orientation	Horizontal	Drive End Bearing	Ball
Opp Drive End Bearing	Ball	Frame Material	Cast Iron
Shaft Type	U	Assembly/Box Mounting	F1/F2 CAPABLE
Outline Drawing	A-SS88249LN-725	Connection Drawing	A-EE7300-LN

This is an uncontrolled document once printed or downloaded and is subject to change without notice. Date Created:06/06/2023



NOTES:

1. BOX CAN BE ROTATED IN 90° STEPS.
2. BOX CAN BE MOUNTED ON OPPOSITE SIDE BY REMOVING BRACKETS AND TURNING FRAME 180°.
3. NAMEPLATE TO BE READ FROM CONDUIT BOX SIDE OF MOTOR.


SIDE OF MOTOR.												TOLERANCES UNLESS SPECIFIED				DRAWN DRS 08-08-2000																									
										DEC.		INCHES				CHK ML 08-08-2000																									
								4		UPDATED DIM'S & TABLE FOR FOOT HOLES CN 38308		TAT 06-21-2005		ML .X		±.1		APPD TB 08-14-2000																							
								3		REVISED C' BOX WAS 3.75" WIDE CN 28426		RJW 01-07-2005		.XX		±.03																									
								2		CORRECTED DASH 725 C DIM WAS 21.58 CN29200-1013		BJW 10-27-2000		.XXX		±.005		TITLE OUTLINE																							
725								213UC		18.58		15.83		7.00		-		5.50		2.73		4		8		1		NEW DRAWING MU32711		DRS 08-14-2000		.XXXX		±.0005		210UC FR. - BB - TEFC - C' FACE		SCALE 9=32			
875								213/15UC		20.08		17.33		8.50		5.50		7.00		3.50		8		NO.		REVISION		BY & DATE		CHK		ANG		±1/2"		FINISH		REF			
																								THIS DRAWING IN DESIGN AND DETAIL IS OUR PROPERTY AND MUST NOT BE USED EXCEPT IN CONNECTION WITH OUR WORK ALL RIGHTS OF DESIGN AND INVENTION ARE RESERVED THIS IS AN ELECTRONICALLY GENERATED DOCUMENT - DO NOT SCALE THIS PRINT		RFP		DIST		LB		CAD FILE ss88249ln		SIZE		DRAWING NO.		PAGE OF		REV.	
DASH								FRAME		C		AG		B		2F		2FF		BS		FOOT HOLE QTY.										B		SS88249LN		4					

EE7300-LN

The diagram illustrates three parallel merge operations. Each operation consists of two input lines on the left and one output line on the right. The inputs are labeled T1, T2, and T3, and the outputs are labeled L1, L2, and L3. The lines for each operation are connected by a small black dot, representing a merge point.

VIEW OF TERMINAL END

L1	<u>WHITE</u>
L2	<u>RED</u>
L3	BLACK

				TOLERANCES UNLESS SPECIFIED			DRAWN BLR 08-13-1999			
				DEC.	INCHES		CHK ML 08-13-1999			
				.X	±.1		APPD GK 08-13-1999			
				.XX	±.02		SCALE 1=1			
2	ADDED OPTIONAL CORD CONNECTION PER MU47226	CTO 03-31-2004	PJB	.XXX	±.005	TITLE CONNECTION DIAGRAM SINGLE VOLT – 3Ø MOTOR	REF			
1	NEW DRAWING	CTO 08-13-1999		.XXXX	±.0005		MAT'L.	FMF		
NO.	REVISION	BY & DATE	CHK	ANG	± 7'30"	FINISH	PREV			
THIS DRAWING IN DESIGN AND DETAIL IS OUR PROPERTY AND MUST NOT BE USED EXCEPT IN CONNECTION WITH OUR WORK ALL RIGHTS OF DESIGN AND INVENTION ARE RESERVED THIS IS AN ELECTRONICALLY GENERATED DOCUMENT – DO NOT SCALE THIS PRINT				RFP		CAD FILE EE7300_LN	SIZE A	DRAWING NO. EE7300-LN	PAGE OF 2	REV.
				DIST WP						

EC Declaration of Conformity

The undersigned representing
the manufacturer:

Regal Beloit America
100 East Randolph St.
Wausau, WI 54401

and the authorized representative
established within the Community:

Marathon Electric UK
6F Thistleton Road Ind. Estate
Market Overton
Oakham, Rutland LE15 7PP UK

are committed to providing customers with products that comply with applicable regulations and international protocols to which they are subject, including the requirements of the European Parliament Directive on the Harmonization of the laws relating to electrical equipment designed for use within certain voltage limits (2014/35/EU).

Regal Beloit America declares that the following product(s), to which this declaration relates, are in conformity with the relevant sections of the EC standards listed below.

This statement supersedes any statements previously issued pertaining to the product(s) listed below and is subject to change without notice.

Model No : LM21836

(Model No. may contain prefix and/or suffix characters)

Catalog No : LM21836

Rework No : N/A

Directives :

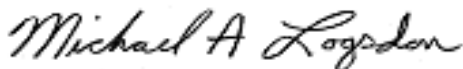
Low Voltage Directive 2014/35/EU

Harmonized Standards Used :

EN 60034-1: 2010 (IEC 60034-1: 2010)

EN 60034-5: 2001/A1:2007 (IEC 60034-5: 2000/A1:2006)

Authorized Representative:



Michael A. Logsdon
Vice President, Technology

Authorized Representative in the Community:



Julian Clark
Marketing Engineer

Created on 09/01/2022

CE 22