

# PRODUCT INFORMATION PACKET

Model No: LM21833

Catalog No: LM21833

Automotive Duty Motor, 1.50 HP, 3 Ph, 60 Hz, 460 V, 1800 RPM, 184UC Frame, TENV



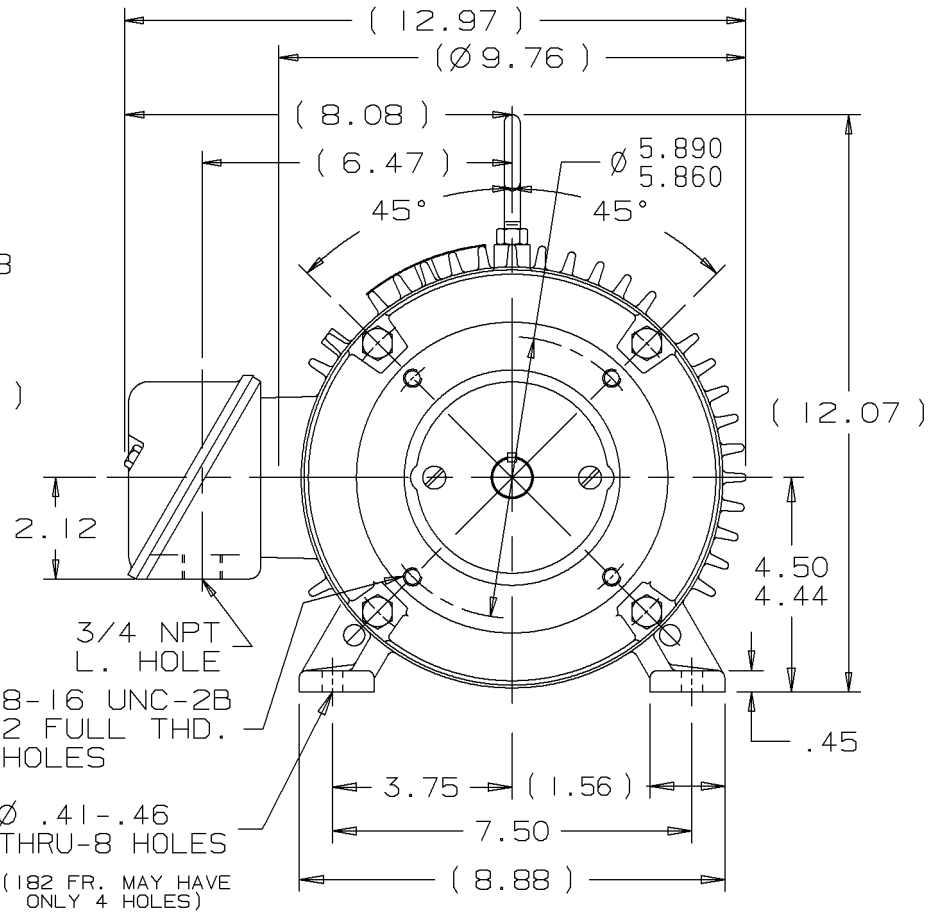
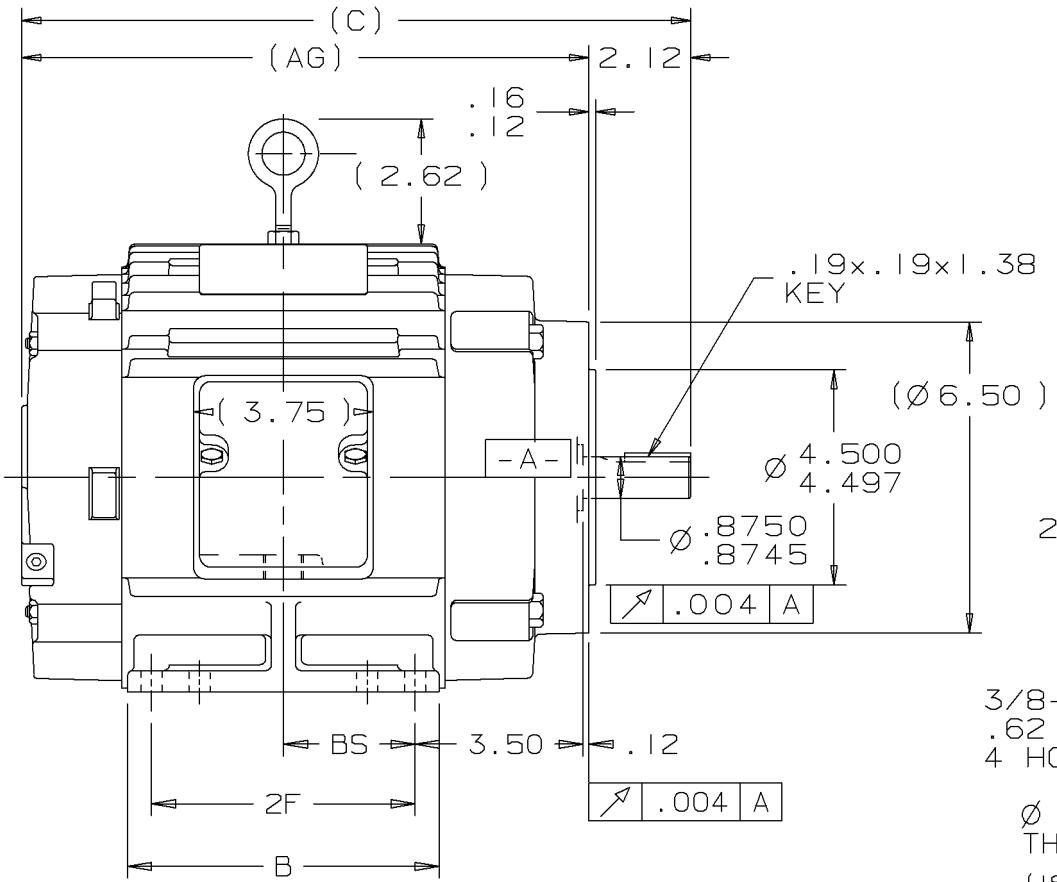
Regal and are trademarks of Regal Rexnord Corporation or one of its affiliated companies.  
©2022 Regal Rexnord Corporation, All Rights Reserved. MC017097E

### Nameplate Specifications

Output HP	<b>1.50 Hp</b>	Output KW	<b>1.1 kW</b>
Frequency	<b>60 Hz</b>	Voltage	<b>460 V</b>
Current	<b>2.1 A</b>	Speed	<b>1770 rpm</b>
Service Factor	<b>1</b>	Phase	<b>3</b>
Efficiency	<b>88.5 %</b>	Power Factor	<b>76</b>
Duty	<b>Continuous</b>	Insulation Class	<b>F</b>
Design Code	<b>B</b>	KVA Code	<b>L</b>
Frame	<b>184UC</b>	Enclosure	<b>Totally Enclosed Non Ventilated</b>
Thermal Protection	<b>No Protection</b>	Ambient Temperature	<b>65 °C</b>
Drive End Bearing Size	<b>207</b>	Opp Drive End Bearing Size	<b>205</b>
UL	<b>Recognized</b>	CSA	<b>Y</b>
CE	<b>Y</b>	IP Code	<b>43</b>
Number of Speeds	<b>1</b>		

### Technical Specifications

Electrical Type	<b>Squirrel Cage Induction Run</b>	Starting Method	<b>Across The Line</b>
Poles	<b>4</b>	Rotation	<b>Reversible</b>
Resistance Main	<b>8.25 Ohms</b>	Mounting	<b>Rigid Base</b>
Motor Orientation	<b>Horizontal</b>	Drive End Bearing	<b>Ball</b>
Opp Drive End Bearing	<b>Ball</b>	Frame Material	<b>Cast Iron</b>
Shaft Type	<b>U</b>	Overall Length	<b>13.96 in</b>
Frame Length	<b>6.75 in</b>	Shaft Diameter	<b>0.875 in</b>
Shaft Extension	<b>2.12 in</b>	Assembly/Box Mounting	<b>F1/F2 CAPABLE</b>
Outline Drawing	<b>A-SS69028LN-675</b>	Connection Drawing	<b>A-EE7300-LN</b>



DASH	FR.	C	B	2F	BS	AG
575	182U	12.96	5.50	4.50	2.25	10.84
675	182U	13.96	6.50	5.50	2.75	11.84
675	184U	13.96	6.50	5.50	2.75	11.84

- NOTES:
1. BOX CAN BE MOUNTED ON OPPOSITE SIDE BY REMOVING BRACKETS & TURNING FRAME 180°.
  2. BOX CAN BE ROTATED IN 90° STEPS.
  3. NAMEPLATE TO BE READ FROM CONDUIT BOX SIDE OF MOTOR.

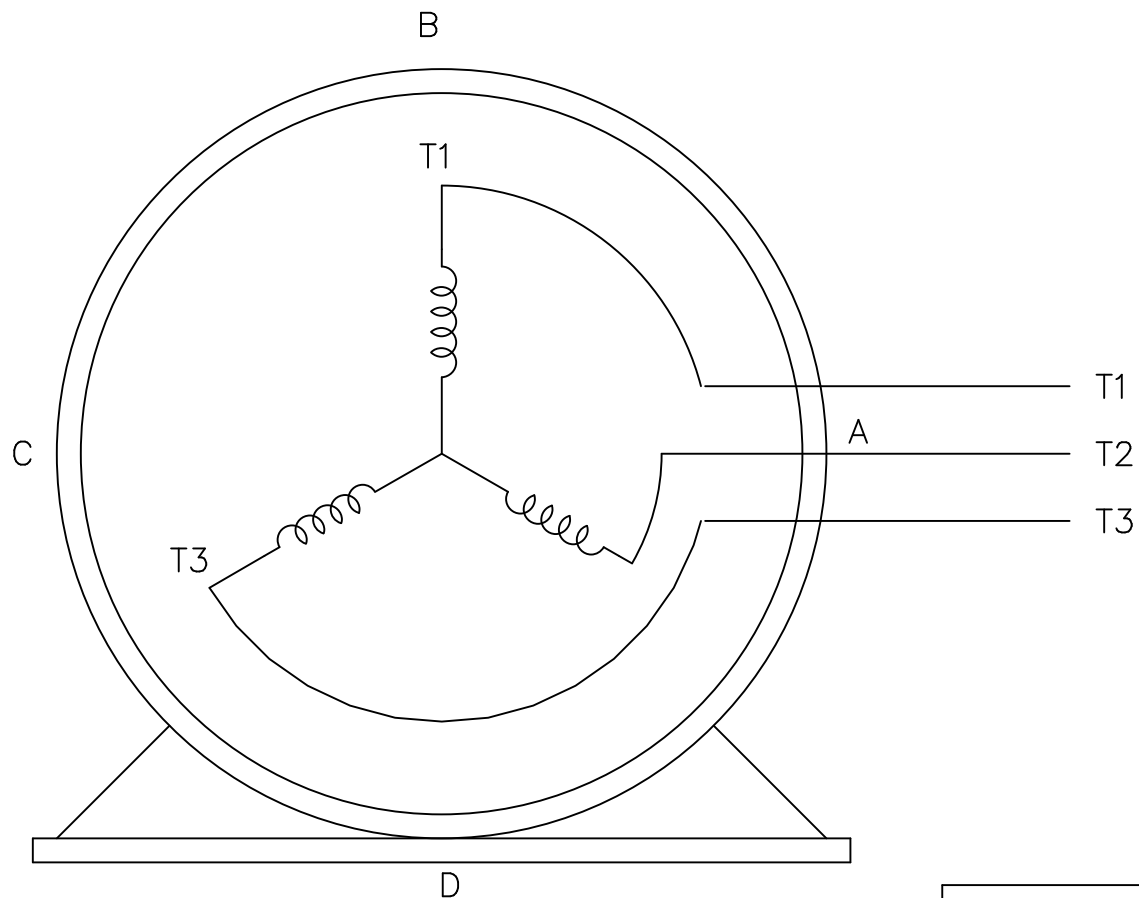
						UNLESS OTHERWISE SPECIFIED DIMENSIONS ARE IN INCHES TOL. ON XX±.03 XXX±.005 XXXX±.0005 ANGLES± 7'30"	
2	01-11-2001	ADDED DUAL DRILLING NOTE CN 29200-1280				DRS	MAX. SURFACE ROUGHNESS UNLESS OTHERWISE NOTED
1	09-20-2000	NEW DRAWING MU33591		DRS	MATERIAL		CHKD BY ML 09-19-2000
REV	DATE	CHANGE		NAME	PART NAME OUTLINE 180U FR. - TENV - C-FACE		DRWG NO A - SS69028LN

| L | PURCHASED | CADD FILE NO. | SS69028LN

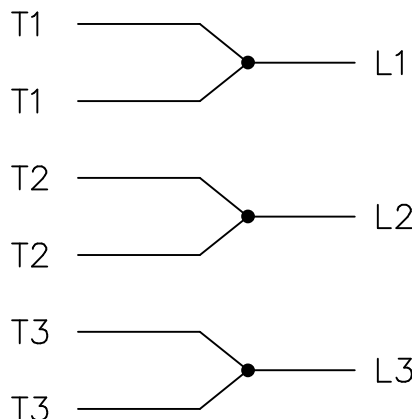
THREE PHASE – SINGLE VOLTAGE  
MOTOR – CONDUIT BOX @ 'A'

EE7300-LN

TO REVERSE ROTATION:  
INTERCHANGE ANY TWO LINE  
LEAD CONNECTIONS




IF MOTOR HAS  
6 LEADS



A-9806 DECAL

OPTIONAL CORD  
CONNECTION

L1 WHITE  
L2 RED  
L3 BLACK

				TOLERANCES UNLESS SPECIFIED			DRAWN BLR 08-13-1999		
				DEC.	INCHES		CHK ML 08-13-1999		
				.X	±.1		APPD GK 08-13-1999		
				.XX	±.02		SCALE 1=1		
2	ADDED OPTIONAL CORD CONNECTION PER MU47226	CTO 03-31-2004	PJB	.XXX	±.005	TITLE CONNECTION DIAGRAM SINGLE VOLT – 3Ø MOTOR	REF		
1	NEW DRAWING	CTO 08-13-1999		.XXXX	±.0005		MAT'L.	FMF	
NO.	REVISION	BY & DATE	CHK	ANG	±7'30"	FINISH	PREV		
THIS DRAWING IN DESIGN AND DETAIL IS OUR PROPERTY AND MUST NOT BE USED EXCEPT IN CONNECTION WITH OUR WORK ALL RIGHTS OF DESIGN AND INVENTION ARE RESERVED THIS IS AN ELECTRONICALLY GENERATED DOCUMENT – DO NOT SCALE THIS PRINT				RFP	CAD FILE EE7300_LN		SIZE	DRAWING NO. PAGE OF	REV.
				DIST WP			A	EE7300-LN	2



**CERTIFICATION DATA SHEET**

**2100 WASHINGTON ST.  
GRAFTON, WI  
PH. 262-277-8810**

**CONN. DIAGRAM:** A-EE7300-LN

**OUTLINE:** A-SS69028LN-675

**CATALOG #:** LM21833

**WINDING #:** K1824122 1

**MOUNTING:** F1/F2 CAPABLE

**TYPICAL MOTOR PERFORMANCE DATA**

HP	kW	SYNC. RPM	F.L. RPM	FRAME	ENCLOSURE	KVA CODE	DESIGN
1 1/2	1.12	1800	1770	184UC	TENV	L	B

PH	Hz	VOLTS	AMPS	START TYPE	DUTY	INSL	S.F.	AMB°C
3	60	460	2.1	ACROSS THE LINE	CONTINUOUS	F3	1.0	65

FULL LOAD EFF:	88.5	3/4 LOAD EFF:	88.5	1/2 LOAD EFF:	86.5	GTD. EFF		ELEC. TYPE	
FULL LOAD PF:	76	3/4 LOAD PF:	68	1/2 LOAD PF:	56	86.5		SQ CAGE IND RUN	

F.L. TORQUE	LOCKED ROTOR AMPS	L.R. TORQUE	B.D. TORQUE	F.L. RISE°C
4.5 LB-FT	18.5	11.3 LB-FT 251 %	18 LB-FT 400 %	45

SOUND PRESSURE @ 3 FT.	SOUND POWER	ROTOR WK^2	MAX. WK^2	SAFE STALL TIME	STARTS / HOUR	APPROX. MOTOR WGT
62 dBA	72 dBA	0.25 LB-FT^2	0 LB-FT^2	30 SEC.	0	60 LBS.

**\*\*\* SUPPLEMENTAL INFORMATION \*\*\***

DE BRACKET TYPE	ODE BRACKET TYPE	MOUNT TYPE	ORIENTATION	SEVERE DUTY	HAZARDOUS LOCATION	DRIP COVER	SCREENS	PAINT
C-FACE	STANDARD	RIGID	HORIZONTAL	FALSE	NONE	FALSE	NONE	GRAY - LINCOLN

BEARINGS		GREASE	SHAFT TYPE	SPECIAL DE	SPECIAL ODE	SHAFT MATERIAL	FRAME MATERIAL
DE	ODE						
BALL	BALL	POLYREX EM	U	NONE	NONE	1144 STRESSPROOF (C-223)	CAST IRON
207	205						

THERMO-PROTECTORS				THERMISTORS	CONTROL	SPACE HEATERS
THERMOSTATS	PROTECTORS	WDG RTDs	BRG RTDs			
NONE	NOT	NONE	NONE	NONE	FALSE	NONE VOLTS

\*  
N  
O  
T  
E  
S  
\*

<b>INVERTER TORQUE:</b> NONE
<b>INV. HP SPEED RANGE:</b> NONE
<b>ENCODER:</b> NONE
NONE NONE
NONE NONE PPR
<b>BRAKE:</b> NONE NONE
NONE P/N NONE
NONE NONE
NONE FT-LB NONE V NONE Hz

Data Sheet

Date: 1/19/2018

LM21833



Data @ **460 V**

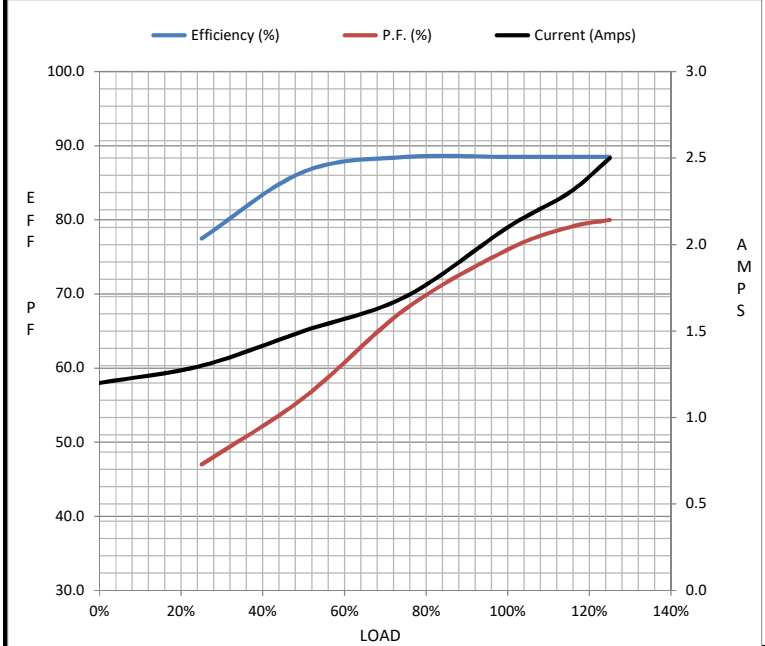
Motor Load Data

Load	0%	25%	50%	75%	100%	115%	125%	LR
Current (Amps)	1.20	1.30	1.50	1.70	2.10	2.30	2.50	18.5
Torque (ft-lb)	0.00	1.10	2.20	3.3	4.5	5.2	5.6	11.3
RPM	1800	1792	1785	1775	1770	1.765	1760	0
Efficiency (%)		77.5	86.5	88.5	88.5	88.5	88.5	
P.F. (%)	7.5	47.0	56.0	68.0	76.0	79.0	80.0	49.0

Motor Speed Data

	LR	Pull-Up	BD	Rated	Idle
Speed (RPM)	0	900	1500	1770	1800
Current (Amps)	18.5	16.5	12.0	2.10	1.20
Torque (ft-lb)	11.3	10.0	18.0	4.5	0.00

Information Block				
HP	1.5			
Sync. RPM	1800			
Frame	182			
Enclosure	TENV			
Construction	TTS			
Voltage	460 V			
Frequency	60 Hz			
Design	B			
LR Code letter	L			
Service Factor	1.15			
Temp Rise @ FL	45 °C			
Duty	CONT			
Ambient	40 °C			
Elevation	1,000 feet			
Rotor/Shaft wk <sup>2</sup>	0.25 Lb-Ft <sup>2</sup>			
Ref Wdg	K1824122 NONE			
Sound Pressure @ 1M	62 dBA			
VFD Rating	NONE			
Outline Dwg	A-SS69028LN-675			
Conn. Diag	A-EE7300-LN			
Additional Specifications:				
0				
0				
EQUIV CKT (OHMS / PHASE)				
R1	R2	X1	X2	Xm
4.7440	2.4380	9.4500	13.4570	223.0200



Speed - Torque Curve

