

PRODUCT INFORMATION PACKET

Model No: LM21827

Catalog No: LM21827

Automotive Duty Motor, 1 HP, 3 Ph, 60 Hz, 460 V, 1800 RPM, 182UC Frame, TENV



Regal and are trademarks of Regal Rexnord Corporation or one of its affiliated companies.
©2022 Regal Rexnord Corporation, All Rights Reserved. MC017097E

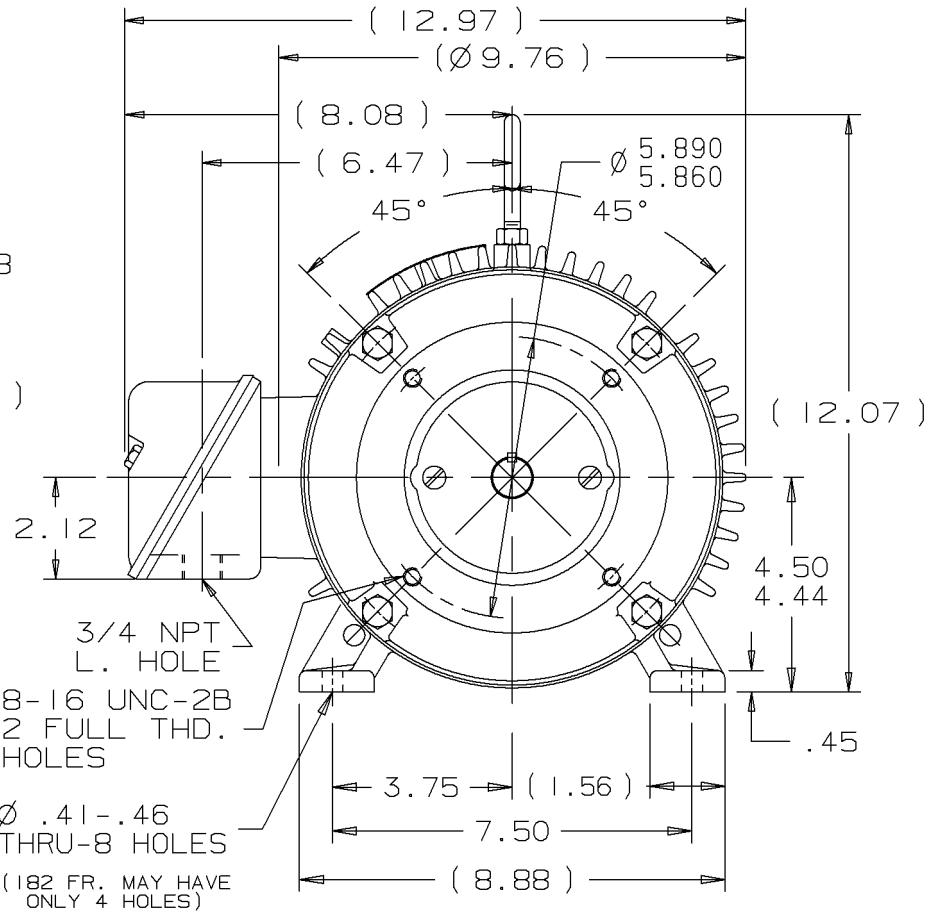
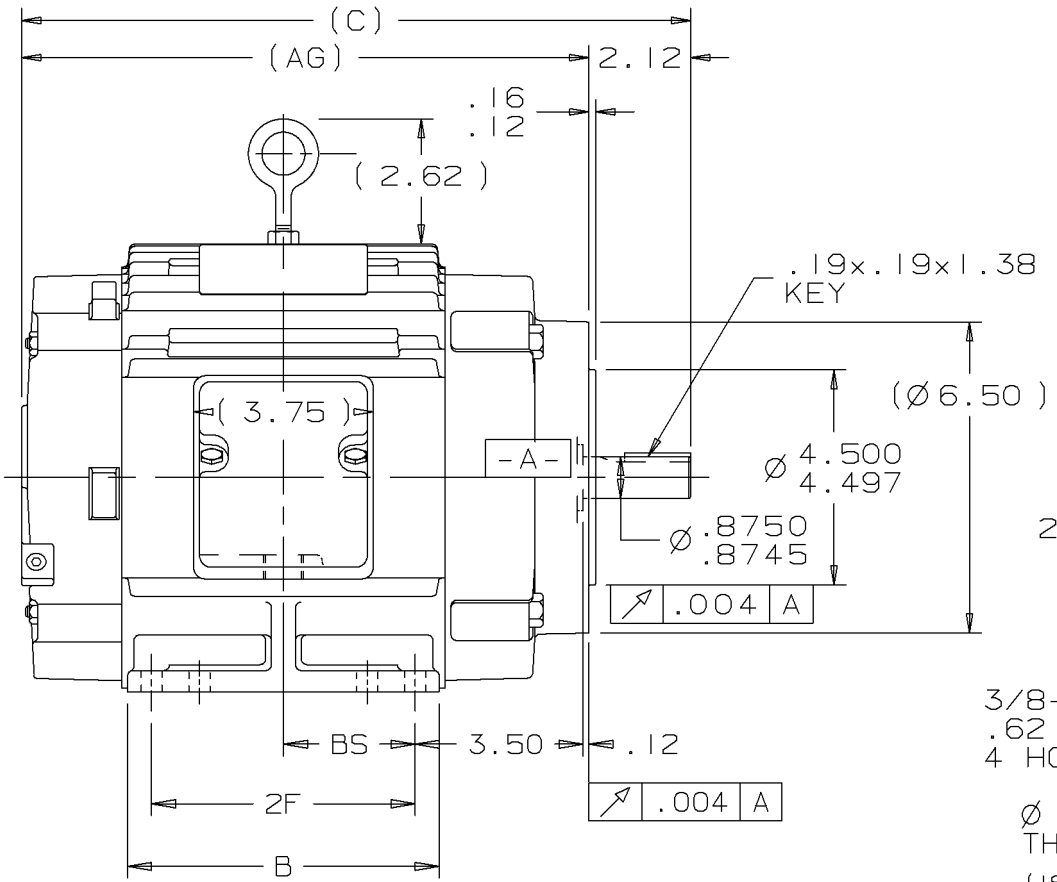
Nameplate Specifications

| | | | |
|------------------------|----------------------|----------------------------|--|
| Output HP | 1 Hp | Output KW | 0.75 kW |
| Frequency | 60 Hz | Voltage | 460 V |
| Current | 1.5 A | Speed | 1770 rpm |
| Service Factor | 1 | Phase | 3 |
| Efficiency | 87.5 % | Power Factor | 75 |
| Duty | Continuous | Insulation Class | F |
| Design Code | B | KVA Code | L |
| Frame | 182UC | Enclosure | Totally Enclosed Non Ventilated |
| Thermal Protection | No Protection | Ambient Temperature | 65 °C |
| Drive End Bearing Size | 207 | Opp Drive End Bearing Size | 205 |
| UL | Recognized | CSA | Y |
| CE | Y | IP Code | 43 |
| Number of Speeds | 1 | | |

Technical Specifications

| | | | |
|-----------------------|------------------------------------|-----------------------|------------------------|
| Electrical Type | Squirrel Cage Induction Run | Starting Method | Across The Line |
| Poles | 4 | Rotation | Reversible |
| Resistance Main | 13.4 Ohms | Mounting | Rigid Base |
| Motor Orientation | Horizontal | Drive End Bearing | Ball |
| Opp Drive End Bearing | Ball | Frame Material | Cast Iron |
| Shaft Type | U | Overall Length | 12.96 in |
| Frame Length | 5.75 in | Shaft Diameter | 0.875 in |
| Shaft Extension | 2.12 in | Assembly/Box Mounting | F1/F2 CAPABLE |
| Outline Drawing | A-SS69028LN-575 | Connection Drawing | A-EE7300-LN |

This is an uncontrolled document once printed or downloaded and is subject to change without notice. Date Created:09/07/2022



| DASH | FR. | C | B | 2F | BS | AG |
|------|------|-------|------|------|------|-------|
| 575 | 182U | 12.96 | 5.50 | 4.50 | 2.25 | 10.84 |
| 675 | 182U | 13.96 | 6.50 | 5.50 | 2.75 | 11.84 |
| 675 | 184U | 13.96 | 6.50 | 5.50 | 2.75 | 11.84 |

- NOTES:
1. BOX CAN BE MOUNTED ON OPPOSITE SIDE BY REMOVING BRACKETS & TURNING FRAME 180°.
 2. BOX CAN BE ROTATED IN 90° STEPS.
 3. NAMEPLATE TO BE READ FROM CONDUIT BOX SIDE OF MOTOR.

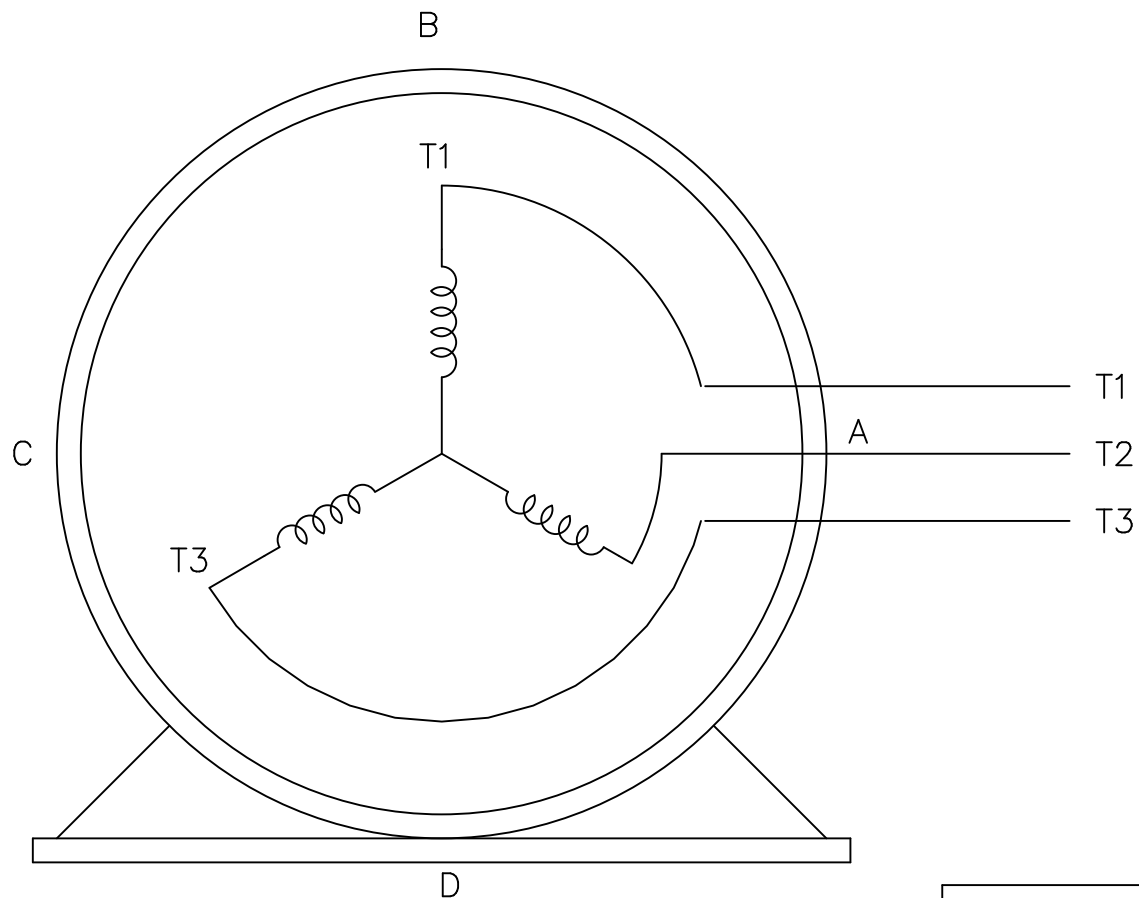
| | | | | | | | | | | |
|-----|------------|---|--|------|---------------------------------------|---|--|---------------|------------------------|-----------------|
| | | | | | | UNLESS OTHERWISE SPECIFIED DIMENSIONS ARE IN INCHES TOL. ON XX±.03 XXX±.005 XXXX±.0005 ANGLES± 7'30" | | | | |
| 2 | 01-11-2001 | ADDED DUAL DRILLING NOTE CN 29200-1280 | | | | DRS | MAX. SURFACE ROUGHNESS UNLESS OTHERWISE NOTED | FINISH | MATERIAL | DRAWN BY DRS |
| 1 | 09-20-2000 | NEW DRAWING MU33591 | | DRS | | | | CHKD BY ML | 09-19-2000 | |
| REV | DATE | CHANGE | | NAME | PART NAME 180U FR. - TENV - C-FACE | | | | DRWG NO A-SS69028LN | |

| L | PURCHASED | CADD FILE NO. | SS69028LN

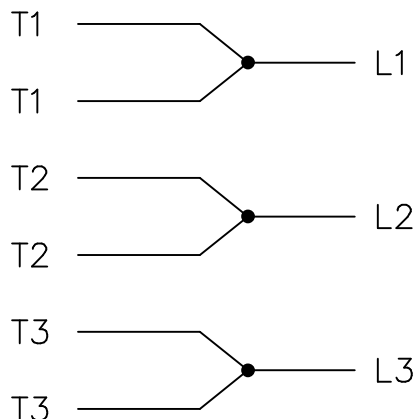
THREE PHASE – SINGLE VOLTAGE
MOTOR – CONDUIT BOX @ 'A'

EE7300-LN

TO REVERSE ROTATION:
INTERCHANGE ANY TWO LINE
LEAD CONNECTIONS



IF MOTOR HAS
6 LEADS



A-9806 DECAL

OPTIONAL CORD
CONNECTION

L1 WHITE
L2 RED
L3 BLACK

TOLERANCES
UNLESS SPECIFIED

DEC. INCHES

.X ±.1

.XX ±.02

2 ADDED OPTIONAL CORD CONNECTION PER MU47226

CTO 03-31-2004

PJB

.XXX ±.005

1 NEW DRAWING

CTO 08-13-1999

.XXXX ±.0005

NO. REVISION

BY & DATE

CHK

ANG ±7'30"

THIS DRAWING IN DESIGN AND DETAIL IS OUR PROPERTY AND MUST NOT BE USED EXCEPT
IN CONNECTION WITH OUR WORK ALL RIGHTS OF DESIGN AND INVENTION ARE RESERVED
THIS IS AN ELECTRONICALLY GENERATED DOCUMENT - DO NOT SCALE THIS PRINT

RFP

CAD FILE EE7300_LN

DIST WP



TITLE CONNECTION DIAGRAM
SINGLE VOLT – 3Ø MOTOR

MAT'L.

FINISH

DRAWN BLR 08-13-1999

CHK ML 08-13-1999

APPD GK 08-13-1999

SCALE 1=1

REF

FMF

PREV

SIZE DRAWING NO. PAGE OF REV.

A EE7300-LN 2

Data Sheet

Date: 2/1/2018

LM21827



Data @ **460 V**

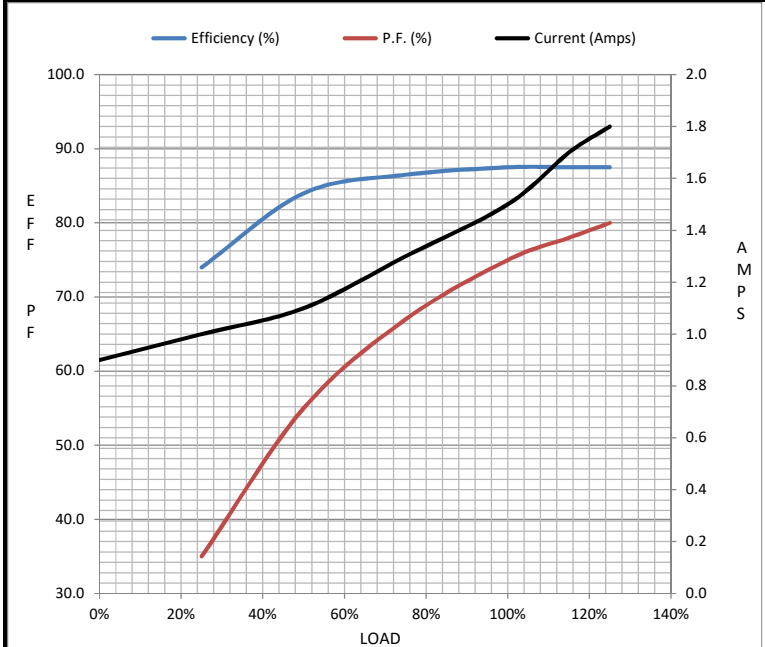
Motor Load Data

| Load | 0% | 25% | 50% | 75% | 100% | 115% | 125% | LR |
|----------------|------|------|------|------|------|-------|------|------|
| Current (Amps) | 0.90 | 1.00 | 1.10 | 1.30 | 1.50 | 1.70 | 1.80 | 12.5 |
| Torque (ft-lb) | 0.00 | 0.75 | 1.50 | 2.20 | 3.0 | 3.4 | 3.7 | 7.0 |
| RPM | 1800 | 1792 | 1785 | 1780 | 1770 | 1.765 | 1762 | 0 |
| Efficiency (%) | | 74.0 | 84.0 | 86.5 | 87.5 | 87.5 | 87.5 | |
| P.F. (%) | 8.0 | 35.0 | 55.0 | 67.0 | 75.0 | 78.0 | 80.0 | 51.0 |

Motor Speed Data

| | LR | Pull-Up | BD | Rated | Idle |
|----------------|------|---------|------|-------|------|
| Speed (RPM) | 0 | 900 | 1500 | 1770 | 1800 |
| Current (Amps) | 12.5 | 11.5 | 8.0 | 1.50 | 0.90 |
| Torque (ft-lb) | 7.0 | 5.4 | 12.5 | 3.0 | 0.00 |

| Information Block | | | | |
|-----------------------------|-------------------------|---------|---------|----------|
| HP | 1.0 | | | |
| Sync. RPM | 1800 | | | |
| Frame | 182 | | | |
| Enclosure | TENV | | | |
| Construction | TTS | | | |
| Voltage | 460 V | | | |
| Frequency | 60 Hz | | | |
| Design | B | | | |
| LR Code letter | L | | | |
| Service Factor | 1.15 | | | |
| Temp Rise @ FL | 40 °C | | | |
| Duty | CONT | | | |
| Ambient | 40 °C | | | |
| Elevation | 1,000 feet | | | |
| Rotor/Shaft wk ² | 0.22 Lb-Ft ² | | | |
| Ref Wdg | K1824131 NONE | | | |
| Sound Pressure @ 1M | 62 dBA | | | |
| VFD Rating | NONE | | | |
| Outline Dwg | A-SS69028LN-575 | | | |
| Conn. Diag | A-EE7300-LN | | | |
| Additional Specifications: | | | | |
| 0 | | | | |
| 0 | | | | |
| EQUIV CKT (OHMS / PHASE) | | | | |
| R1 | R2 | X1 | X2 | Xm |
| 7.8950 | 3.5220 | 13.8310 | 18.7720 | 325.1800 |



Speed - Torque Curve

