

PRODUCT INFORMATION PACKET

Model No: LM21665

Catalog No: LM21665

Automotive Duty Motor, 15 HP, 3 Ph, 60 Hz, 460 V, 1800 RPM, 284U Frame, TEFC



Regal and are trademarks of Regal Rexnord Corporation or one of its affiliated companies.
©2022 Regal Rexnord Corporation, All Rights Reserved. MC017097E

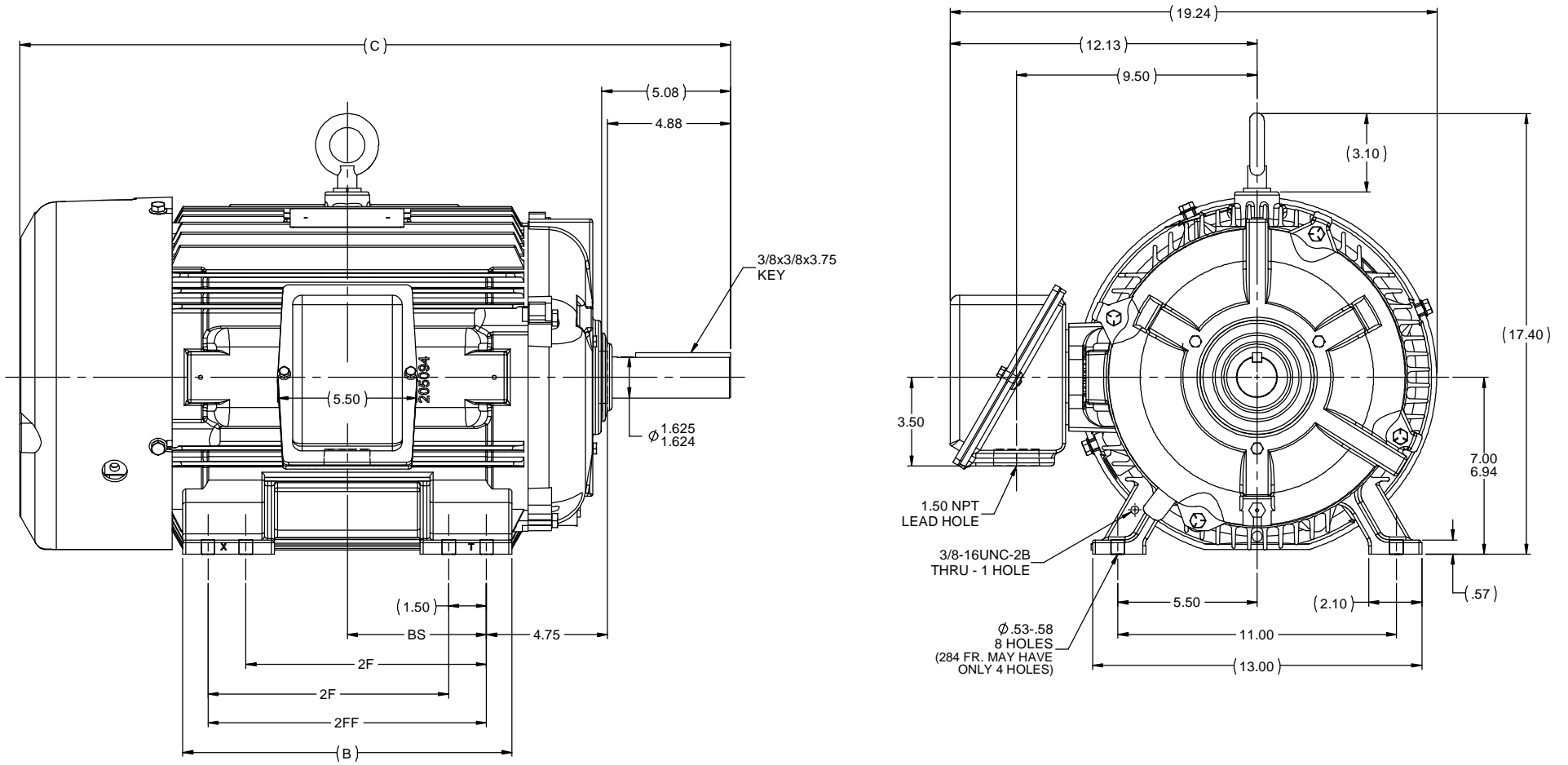
Nameplate Specifications

Output HP	15 Hp	Output KW	11.2 kW
Frequency	60 Hz	Voltage	460 V
Current	18.0 A	Speed	1770 rpm
Service Factor	1	Phase	3
Efficiency	92.4 %	Power Factor	85
Duty	Continuous	Insulation Class	F
Design Code	B	KVA Code	F
Frame	284U	Enclosure	Totally Enclosed Fan Cooled
Thermal Protection	No Protection	Ambient Temperature	65 °C
Drive End Bearing Size	311	Opp Drive End Bearing Size	210
UL	Recognized	CSA	Y
CE	Y	IP Code	43
Number of Speeds	1		

Technical Specifications

Electrical Type	Squirrel Cage Induction Run	Starting Method	Across The Line
Poles	4	Rotation	Reversible
Resistance Main	.629 Ohms	Mounting	Rigid Base
Motor Orientation	Horizontal	Drive End Bearing	Ball
Opp Drive End Bearing	Ball	Frame Material	Cast Iron
Shaft Type	U	Overall Length	26.56 in
Frame Length	12.75 in	Shaft Diameter	1.625 in
Shaft Extension	4.88 in	Assembly/Box Mounting	F1/F2 CAPABLE
Connection Drawing	A-EE7300-LN	Outline Drawing	B-SS311055LN-1275

This is an uncontrolled document once printed or downloaded and is subject to change without notice. Date Created:09/07/2022



- NOTES:
 1. CONDUIT BOX CAN BE ROTATED IN 90 ° STEPS.
 2. CONDUIT BOX CAN BE MOUNTED ON OPPOSITE SIDE BY REMOVING BRACKETS AND TURNING FRAME 180 °.
 3. NAMEPLATES TO BE READ FROM CONDUIT BOX SIDE OF MOTOR.

1275	284U	26.56	11.50	9.50	---	4.75
1425	284/286U	28.06	13.00	9.50	11.00	5.50
DASH	FRAME	C	B	2F	2FF	BS

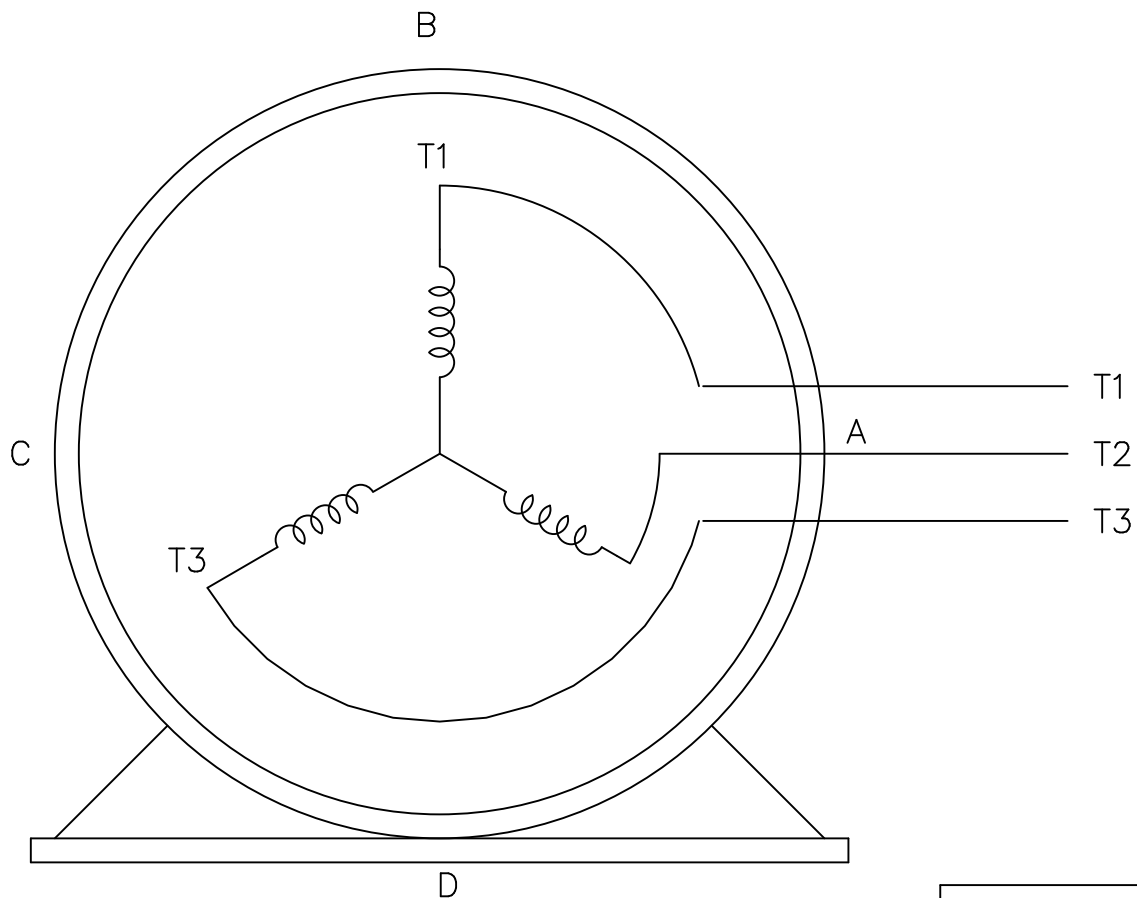
		TOLERANCES UNLESS SPECIFIED				Lincoln WORKS	DRAWN
		DEC	INCHES				ML
		X	±.1				HLB 10-10-2000
3	UPDATED TO NEW FRAME DESIGN	MU109232	MSG 08-16-2012	TB	XX	±.03	CHK ML 10-16-2000
2	286 FR. WAS 284 FR. (IN NOTE)	CN 29200-1344	HLB 01-25-2001	ML	XXX	±.005	APPR TB 10-16-2000
1	NEW DRAWING	MU33973	HLB 10-16-2000	ML	XXXX	±.0005	SCALE 1:4
NO	REVISION	BY & DATE	CHK	LANG	±7'30"	FINISH	REF
							FMF MU33973
							PAGE OF
							REV
							SIZE DRAWING NO
							B SS311055LN
							REV 3



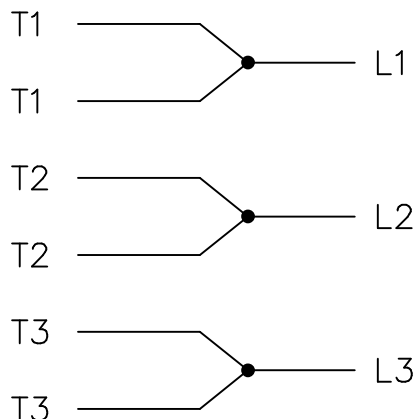
THREE PHASE – SINGLE VOLTAGE
MOTOR – CONDUIT BOX @ 'A'

EE7300-LN

TO REVERSE ROTATION:
INTERCHANGE ANY TWO LINE
LEAD CONNECTIONS



IF MOTOR HAS
6 LEADS




A-9806 DECAL

OPTIONAL CORD
CONNECTION

L1 WHITE
L2 RED
L3 BLACK

VIEW OF TERMINAL END

				TOLERANCES UNLESS SPECIFIED			DRAWN BLR 08-13-1999				
				DEC.	INCHES		CHK ML 08-13-1999				
				.X	±.1		APPD GK 08-13-1999				
				.XX	±.02		SCALE 1=1				
2	ADDED OPTIONAL CORD CONNECTION PER MU47226	CTO 03-31-2004	PJB	.XXX	±.005	TITLE CONNECTION DIAGRAM SINGLE VOLT – 3Ø MOTOR	REF				
1	NEW DRAWING	CTO 08-13-1999		.XXXX	±.0005		MAT'L.	FMF			
NO.	REVISION	BY & DATE	CHK	ANG	±7'30"	FINISH	PREV				
THIS DRAWING IN DESIGN AND DETAIL IS OUR PROPERTY AND MUST NOT BE USED EXCEPT IN CONNECTION WITH OUR WORK ALL RIGHTS OF DESIGN AND INVENTION ARE RESERVED THIS IS AN ELECTRONICALLY GENERATED DOCUMENT – DO NOT SCALE THIS PRINT				RFP	CAD FILE EE7300_LN		SIZE	DRAWING NO.	PAGE	OF	REV.
				DIST WP			A	EE7300-LN			2



CERTIFICATION DATA SHEET

2100 WASHINGTON ST.
GRAFTON, WI
PH. 262-277-8810

CONN. DIAGRAM: A-EE7300-LN

OUTLINE: B-SS311055LN-1275

WINDING #: K2564174 R1 7

CATALOG #: LM21665

MOUNTING: F1/F2 CAPABLE

TYPICAL MOTOR PERFORMANCE DATA

HP	kW	SYNC. RPM	F.L. RPM	FRAME	ENCLOSURE	KVA CODE	DESIGN
15	11.2	1800	1770	284U	TEFC	F	B

PH	Hz	VOLTS	AMPS	START TYPE	DUTY	INSL	S.F.	AMB°C
3	60	460	18	ACROSS THE LINE	CONTINUOUS	F3	1.0	65

FULL LOAD EFF:	92.4	3/4 LOAD EFF:	93	1/2 LOAD EFF:	92.4	GTD. EFF		ELEC. TYPE	
FULL LOAD PF:	85	3/4 LOAD PF:	82	1/2 LOAD PF:	74	91		SQ CAGE IND RUN	

F.L. TORQUE	LOCKED ROTOR AMPS	L.R. TORQUE	B.D. TORQUE	F.L. RISE°C
44.5 LB-FT	100	75 LB-FT 169 %	110 LB-FT 247 %	40

SOUND PRESSURE @ 3 FT.	SOUND POWER	ROTOR WK^2	MAX. WK^2	SAFE STALL TIME	STARTS / HOUR	APPROX. MOTOR WGT
65 dBA	75 dBA	2.7 LB-FT^2	- LB-FT^2	25 SEC.	-	475 LBS.

*** SUPPLEMENTAL INFORMATION ***

DE BRACKET TYPE	ODE BRACKET TYPE	MOUNT TYPE	ORIENTATION	SEVERE DUTY	HAZARDOUS LOCATION	DRIP COVER	SCREENS	PAINT
STANDARD	STANDARD	RIGID	HORIZONTAL	FALSE	NONE	FALSE	NONE	GRAY - LINCOLN

BEARINGS		GREASE	SHAFT TYPE	SPECIAL DE	SPECIAL ODE	SHAFT MATERIAL	FRAME MATERIAL
DE	ODE						
BALL	BALL	POLYREX EM	U	NONE	NONE	1045 HOT ROLLED (C-204)	CAST IRON
311	210						

THERMO-PROTECTORS				THERMISTORS	CONTROL	SPACE HEATERS
THERMOSTATS	PROTECTORS	WDG RTDs	BRG RTDs			
NONE	NOT	NONE	NONE	NONE	FALSE	NONE VOLTS

*
N
O
T
E
S
*

INVERTER TORQUE: NONE
INV. HP SPEED RANGE: NONE
ENCODER: NONE NONE NONE NONE NONE PPR
BRAKE: NONE NONE NONE P/N NONE NONE NONE FT-LB V NONE Hz

Data Sheet

Date: 1/19/2018

LM21665



Data @ **460 V**

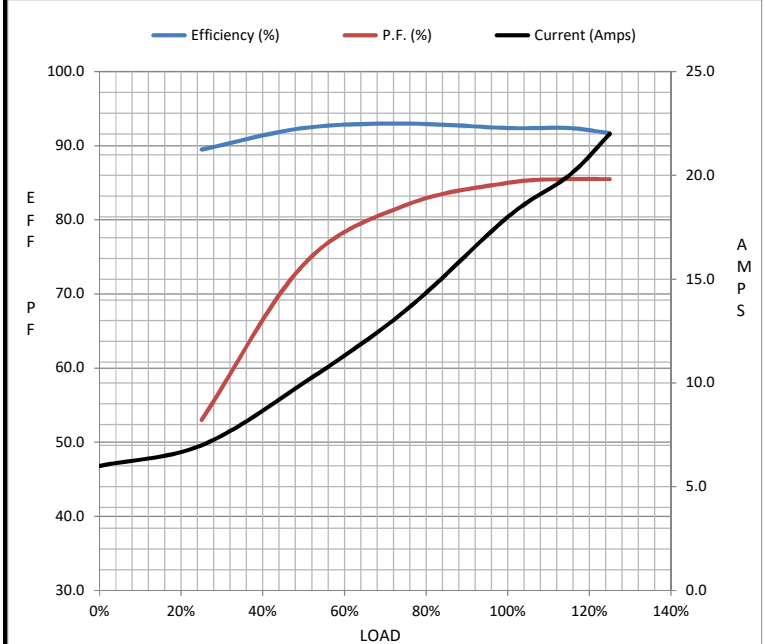
Motor Load Data

Load	0%	25%	50%	75%	100%	115%	125%	LR
Current (Amps)	6.0	7.0	10.0	13.5	18.0	20.0	22.0	100
Torque (ft-lb)	0.00	11.0	22.0	33.5	44.5	51.5	56.0	75.0
RPM	1800	1790	1785	1775	1770	1.765	1760	0
Efficiency (%)		89.5	92.4	93.0	92.4	92.4	91.7	
P.F. (%)	6.0	53.0	74.0	82.0	85.0	85.5	85.5	36.0

Motor Speed Data

	LR	Pull-Up	BD	Rated	Idle
Speed (RPM)	0	900	1640	1770	1800
Current (Amps)	100	90.0	65.0	18.0	6.0
Torque (ft-lb)	75.0	68.0	110	44.5	0.00

Information Block				
HP	15.0			
Sync. RPM	1800			
Frame	284			
Enclosure	TEFC			
Construction	TFP			
Voltage	460 V			
Frequency	60 Hz			
Design	B			
LR Code letter	F			
Service Factor	1.15			
Temp Rise @ FL	40 °C			
Duty	CONT			
Ambient	40 °C			
Elevation	1,000 feet			
Rotor/Shaft wk ²	2.70 Lb-Ft ²			
Ref Wdg	K2564174 R1			
Sound Pressure @ 1M	65 dBA			
VFD Rating	NONE			
Outline Dwg	B-SS311055LN-1275			
Conn. Diag	A-EE7300-LN			
Additional Specifications:				
0				
0				
EQUIV CKT (OHMS / PHASE)				
R1	R2	X1	X2	Xm
0.3650	0.2820	1.4690	2.2870	44.0370



Speed - Torque Curve

