

PRODUCT INFORMATION PACKET



Model No: LM21407
Catalog No: LM21407
25,3600,TEFC,284TCZ,3/60/230/460

Regal and Leeson are trademarks of Regal Rexnord Corporation or one of its affiliated companies.
©2023 Regal Rexnord Corporation, All Rights Reserved. MC017097E





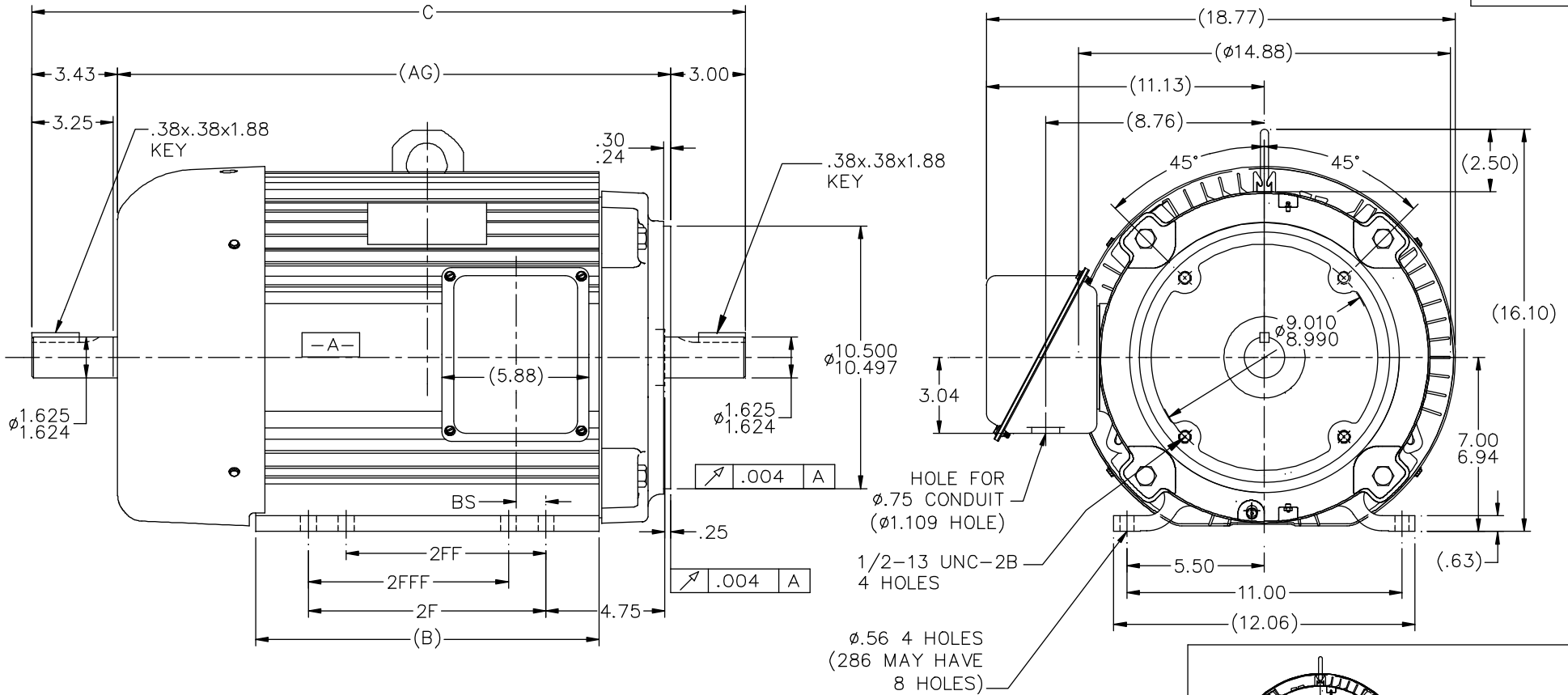
Nameplate Specifications

Phase	3	Output HP	25 & 25 Hp
Output KW	18.7 & 18.7 kW	Voltage	230/460 & 208/415 V
Speed	3530 & 2920 rpm	Service Factor	1.25 & 1.15
Frame	284TCZ	Enclosure	Totally Enclosed Fan Cooled
Thermal Protection	No Protection	Efficiency	91 & 90.2 %
Ambient Temperature	40 °C	Frequency	60 & 50 Hz
Current	58/29 & 64/32 A	Power Factor	90
Duty	Continuous	Insulation Class	F
Design Code	B	KVA Code	G
Drive End Bearing Size	312	Opp Drive End Bearing Size	209
UL	Recognized	CSA	Y
CE	Y	IP Code	43
Number of Speeds	1		

Technical Specifications


Electrical Type	Squirrel Cage Induction Run	Starting Method	Wye Start Delta Run
Poles	2	Rotation	Reversible
Mounting	Rigid Base	Motor Orientation	Horizontal
Drive End Bearing	Ball	Opp Drive End Bearing	Ball
Frame Material	Aluminum	Shaft Type	Special Extension Both Sides
Assembly/Box Mounting	F1/F2 CAPABLE		
Outline Drawing	XF5F1SC4-1375	Connection Drawing	3A263-2

This is an uncontrolled document once printed or downloaded and is subject to change without notice. Date Created:06/22/2023



NOTES:

1. CONDUIT BOX CAN BE ROTATED IN 90° STEPS.
2. CONDUIT BOX CAN BE MOUNTED ON OPPOSITE SIDE BY REMOVING BRACKETS AND TURNING FRAME 180°.
3. NAMEPLATE TO BE READ FROM CONDUIT BOX SIDE OF MOTOR.

									<div style="display: flex; justify-content: space-between;"> <div> <p>5 "BS" DIMS WERE 1.19 ECO-0038408</p> <p>4 CHANGED 'AG' FOR DASH 1525</p> <p>3 ADDED HOLE CALL OUT FOR FEET CN46077</p> <p>2 ø.75 CONDUIT WAS .75 HOLE CN 38428</p> <p>1 NEW DRAWING</p> </div> <div> <p>WGJ 09-19-2013</p> <p>RJW 11-01-2005</p> <p>RJW 05-09-2005</p> <p>HLB 09-28-2004</p> <p>DRS 01-14-2003</p> </div> <div> <p>EMH DEC. INCHES</p> <p>ML .X ±.1</p> <p>ML .XX ±.03</p> <p>ML .XXX ±.005</p> <p>TB .XXXX ±.0005</p> </div> <div>  <p>DRAWN DRS 01-13-2003</p> <p>CHK ML 01-14-2003</p> <p>APP TB 01-14-2003</p> <p>SCALE 1=4</p> <p>REF</p> <p>FMF</p> <p>PREV</p> </div> </div>		
									<div style="display: flex; justify-content: space-between;"> <div> <p>NO. REVISION</p> <p>BY & DATE</p> </div> <div> <p>CHK ANG ±7'30"</p> <p>FINISH</p> </div> <div> <p>CAD FILE xf5f1sc4</p> </div> </div>		
<p>THIS DRAWING IN DESIGN AND DETAIL IS OUR PROPERTY AND MUST NOT BE USED EXCEPT IN CONNECTION WITH OUR WORK ALL RIGHTS OF DESIGN AND INVENTION ARE RESERVED THIS IS AN ELECTRONICALLY GENERATED DOCUMENT - DO NOT SCALE THIS PRINT</p>									<div style="display: flex; justify-content: space-between;"> <div> <p>RFP</p> <p>DIST BY</p> </div> <div> <p>SIZE B</p> <p>DRAWING NO. XF5F1SC4</p> <p>PAGE 5</p> </div> </div>		