

# PRODUCT INFORMATION PACKET

Model No: LM21385

Catalog No: LM21385

Automotive Duty Motor, 5 HP, 3 Ph, 60 Hz, 460 V, 1200 RPM, 254U Frame, TEFC



Regal and are trademarks of Regal Rexnord Corporation or one of its affiliated companies.  
©2022 Regal Rexnord Corporation, All Rights Reserved. MC017097E

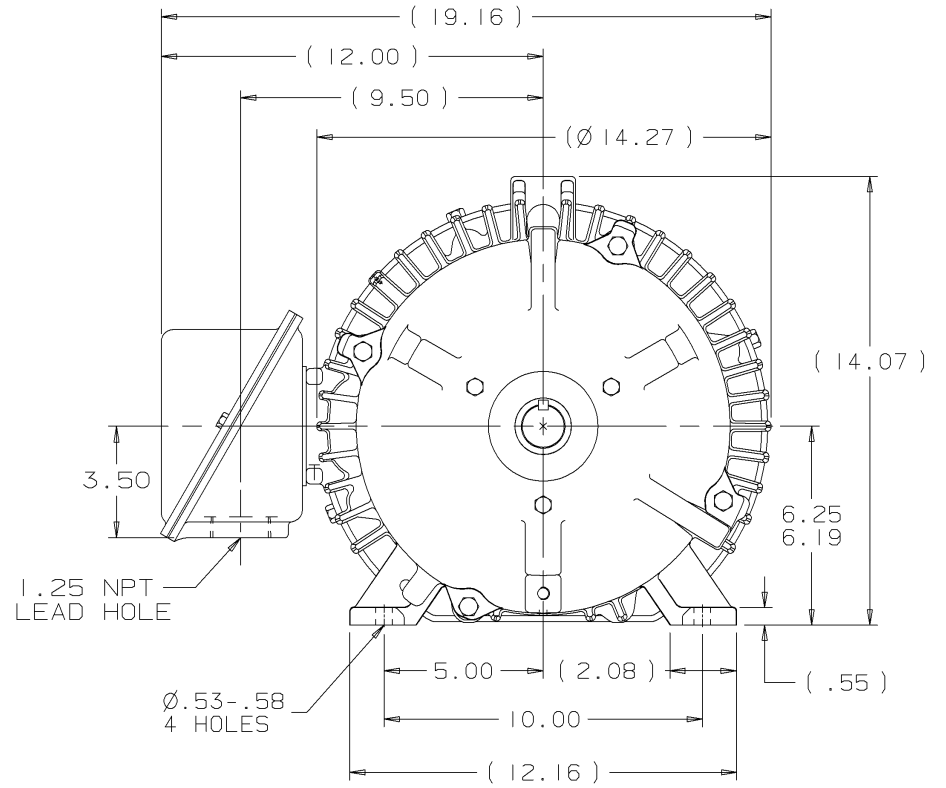
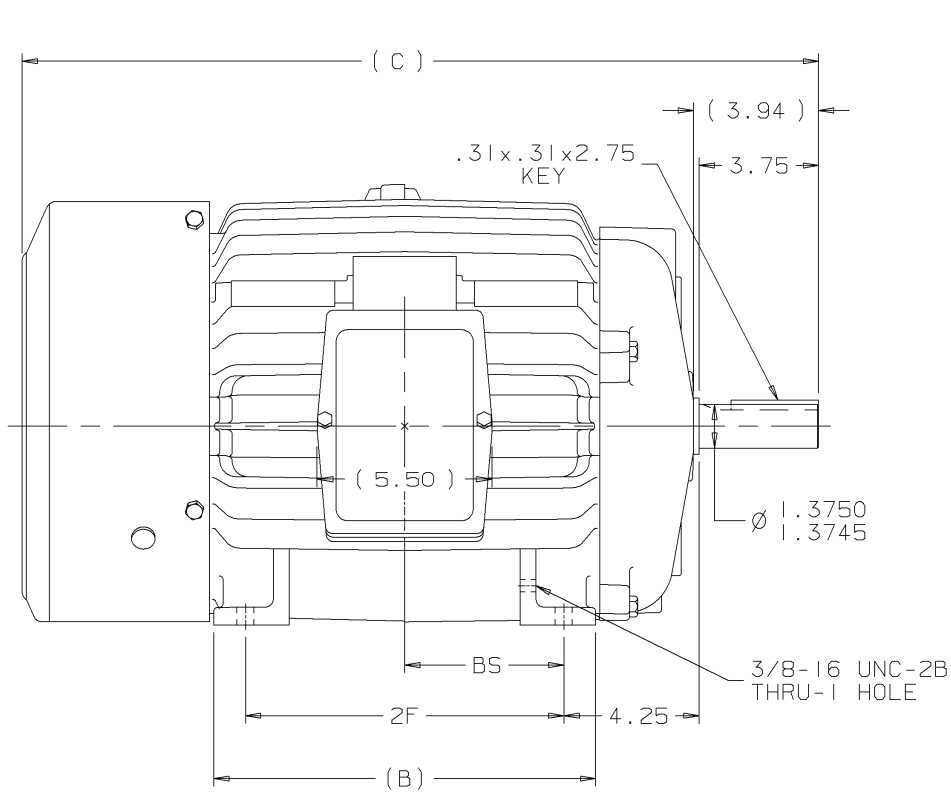
### Nameplate Specifications

Output HP	<b>5 Hp</b>	Output KW	<b>3.7 kW</b>
Frequency	<b>60 Hz</b>	Voltage	<b>460 V</b>
Current	<b>6.7 A</b>	Speed	<b>1175 rpm</b>
Service Factor	<b>1</b>	Phase	<b>3</b>
Efficiency	<b>90.2 %</b>	Power Factor	<b>76</b>
Duty	<b>Continuous</b>	Insulation Class	<b>F</b>
Design Code	<b>B</b>	KVA Code	<b>H</b>
Frame	<b>254U</b>	Enclosure	<b>Totally Enclosed Fan Cooled</b>
Thermal Protection	<b>No Protection</b>	Ambient Temperature	<b>65 °C</b>
Drive End Bearing Size	<b>309</b>	Opp Drive End Bearing Size	<b>210</b>
UL	<b>Recognized</b>	CSA	<b>Y</b>
CE	<b>Y</b>	IP Code	<b>43</b>
Number of Speeds	<b>1</b>		

### Technical Specifications


Electrical Type	<b>Squirrel Cage Induction Run</b>	Starting Method	<b>Across The Line</b>
Poles	<b>6</b>	Rotation	<b>Reversible</b>
Resistance Main	<b>1.92 Ohms</b>	Mounting	<b>Rigid Base</b>
Motor Orientation	<b>Horizontal</b>	Drive End Bearing	<b>Ball</b>
Opp Drive End Bearing	<b>Ball</b>	Frame Material	<b>Cast Iron</b>
Shaft Type	<b>U</b>	Overall Length	<b>23.27 in</b>
Frame Length	<b>10.50 in</b>	Shaft Diameter	<b>1.375 in</b>
Shaft Extension	<b>3.75 in</b>	Assembly/Box Mounting	<b>F1/F2 CAPABLE</b>
Connection Drawing	<b>A-EE7300-LN</b>	Outline Drawing	<b>B-SS203362LN-1050</b>

This is an uncontrolled document once printed or downloaded and is subject to change without notice. Date Created:09/07/2022



NOTES:

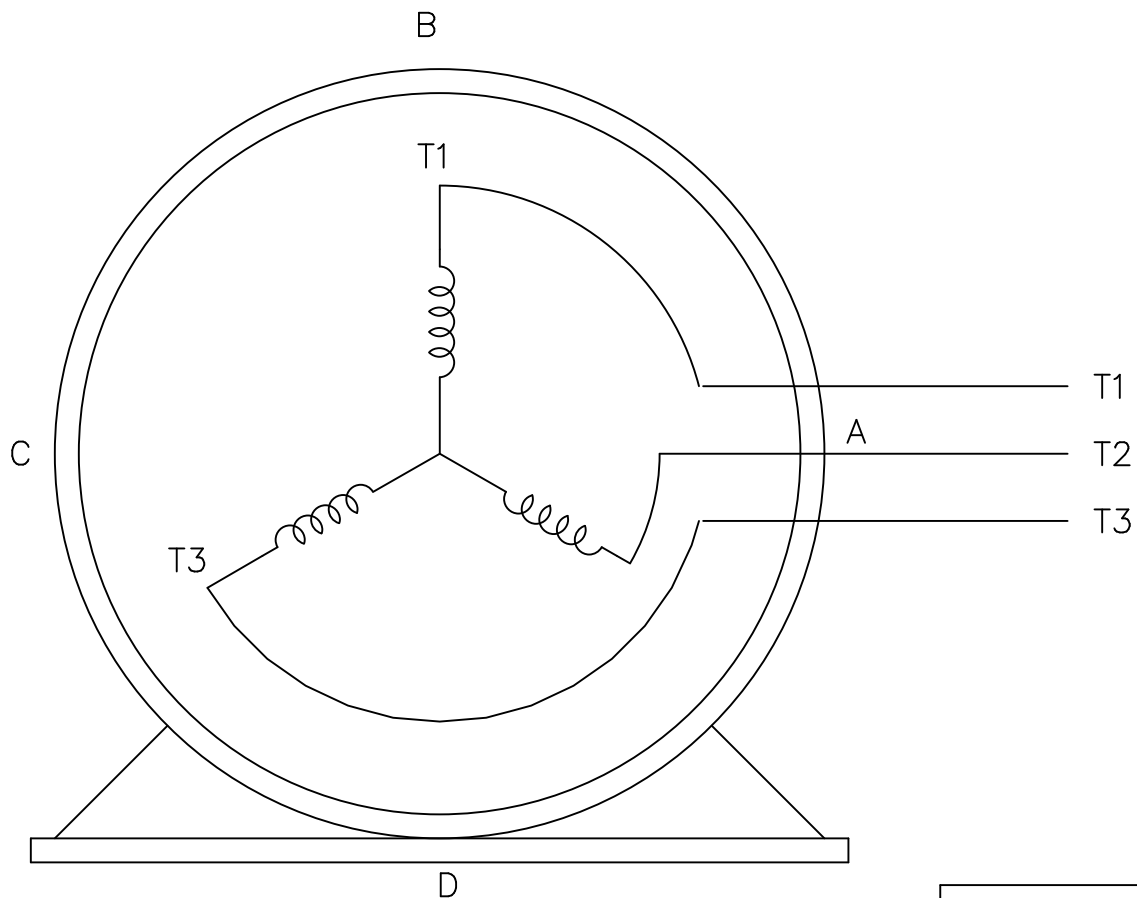
1. CONDUIT BOX CAN BE ROTATED ON ITS AXIS.
2. CONDUIT BOX CAN BE MOUNTED ON OPPOSITE SIDE BY REMOVING BRACKETS AND TURNING FRAME 180°.
3. NAMEPLATE TO BE READ FROM CONDUIT BOX SIDE OF MOTOR

DASH	FRAME	B	C	2F	BS	REV	DATE	CHANGE	NAME	UNLESS OTHERWISE SPECIFIED DIMENSIONS ARE IN INCHES TOL. ON XX±.03 XXX±.005 XXXX±.0005 ANGLES± 7'30"	MAX. SURFACE ROUGHNESS UNLESS OTHERWISE NOTED	FINISH	MATERIAL	DRAWN BY	CHKD BY	APPD BY	DRWG NO
1050	254U	10.25	23.27	8.25	4.12	2	08-09-2000	REVISED OUTLINE TO HAVE C'BOX FROM: SS203002LN CN 29200-711	MSG		<input checked="" type="checkbox"/>			DRS	BLR	TB	03-13-2000
1225	256U	12.00	25.02	10.00	5.00	1	03-13-2000	NEW DRAWING MU29681	DRS								
PART NAME OUTLINE - TEFC 250U FRAME - BB - TS - STD.													B-SS203362LN				
										L   PURCHASED		CADD FILE NO.		SS203362LN			

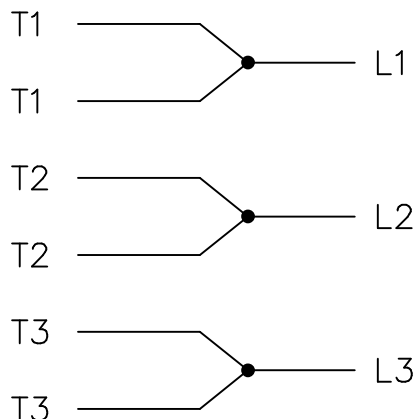
THREE PHASE – SINGLE VOLTAGE  
MOTOR – CONDUIT BOX @ 'A'

EE7300-LN

TO REVERSE ROTATION:  
INTERCHANGE ANY TWO LINE  
LEAD CONNECTIONS



IF MOTOR HAS  
6 LEADS




A-9806 DECAL

VIEW OF TERMINAL END

OPTIONAL CORD  
CONNECTION

L1 WHITE  
L2 RED  
L3 BLACK

				TOLERANCES UNLESS SPECIFIED			DRAWN BLR 08-13-1999	
				DEC.	INCHES		CHK ML 08-13-1999	
				.X	±.1		APPD GK 08-13-1999	
				.XX	±.02		SCALE 1=1	
2	ADDED OPTIONAL CORD CONNECTION PER MU47226	CTO 03-31-2004	PJB	.XXX	±.005	TITLE CONNECTION DIAGRAM SINGLE VOLT – 3Ø MOTOR	REF	
1	NEW DRAWING	CTO 08-13-1999		.XXXX	±.0005		MAT'L.	FMF
NO.	REVISION	BY & DATE	CHK	ANG	±7'30"	FINISH	PREV	
THIS DRAWING IN DESIGN AND DETAIL IS OUR PROPERTY AND MUST NOT BE USED EXCEPT IN CONNECTION WITH OUR WORK ALL RIGHTS OF DESIGN AND INVENTION ARE RESERVED THIS IS AN ELECTRONICALLY GENERATED DOCUMENT – DO NOT SCALE THIS PRINT			RFP	CAD FILE EE7300_LN		SIZE	DRAWING NO. PAGE OF	REV.
			DIST WP			A	EE7300-LN	2

Data Sheet

Date: 1/30/2018

LM21385



Data @ **460 V**

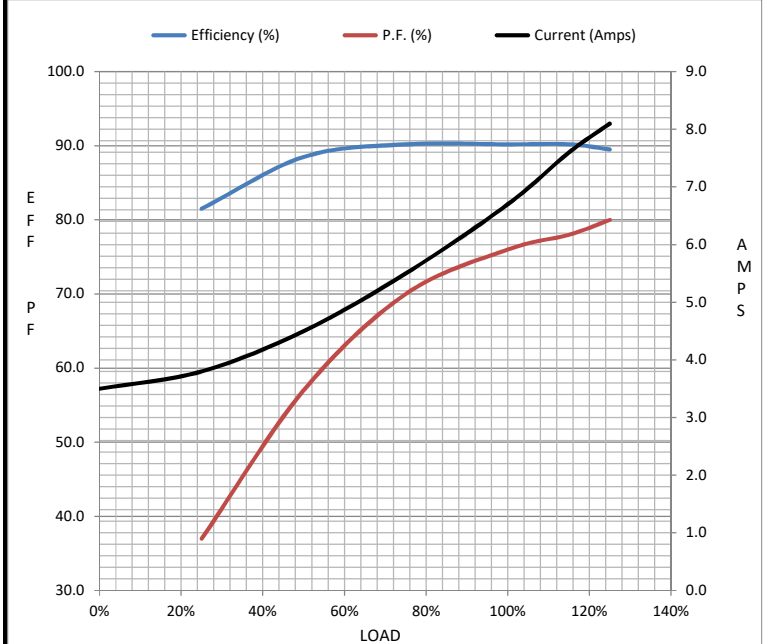
Motor Load Data

Load	0%	25%	50%	75%	100%	115%	125%	LR
Current (Amps)	3.5	3.8	4.5	5.5	6.7	7.6	8.1	46.0
Torque (ft-lb)	0.00	5.5	11.0	16.8	22.4	25.8	28.0	48.0
RPM	1200	1195	1188	1182	1175	1,172	1168	0
Efficiency (%)		81.5	88.5	90.2	90.2	90.2	89.5	
P.F. (%)	7.0	37.0	57.0	70.0	76.0	78.0	80.0	42.0

Motor Speed Data

	LR	Pull-Up	BD	Rated	Idle
Speed (RPM)	0	550	1025	1175	1200
Current (Amps)	46.0	43.0	27.5	6.7	3.5
Torque (ft-lb)	48.0	42.0	69.5	22.4	0.00

Information Block				
HP	5.0			
Sync. RPM	1200			
Frame	254			
Enclosure	TEFC			
Construction	TFN			
Voltage	460 V			
Frequency	60 Hz			
Design	B			
LR Code letter	H			
Service Factor	1.15			
Temp Rise @ FL	35 °C			
Duty	CONT			
Ambient	40 °C			
Elevation	1,000 feet			
Rotor/Shaft wk <sup>2</sup>	2.50 Lb-Ft <sup>2</sup>			
Ref Wdg	254671 NONE			
Sound Pressure @ 1M	56 dBA			
VFD Rating	NONE			
Outline Dwg	B-SS203362LN-1050			
Conn. Diag	A-EE7300-LN			
Additional Specifications:				
0				
0				
EQUIV CKT (OHMS / PHASE)				
R1	R2	X1	X2	Xm
1.1280	0.8900	3.8780	3.8780	73.7100



Speed - Torque Curve

