

# PRODUCT INFORMATION PACKET

Model No: LM21382

Catalog No: LM21382

OBSOLETE REPLACED BY LM34115 - 3,1800,TEFC,213U,3/60/460

Regal and are trademarks of Regal Rexnord Corporation or one of its affiliated companies.  
©2022 Regal Rexnord Corporation, All Rights Reserved. MC017097E



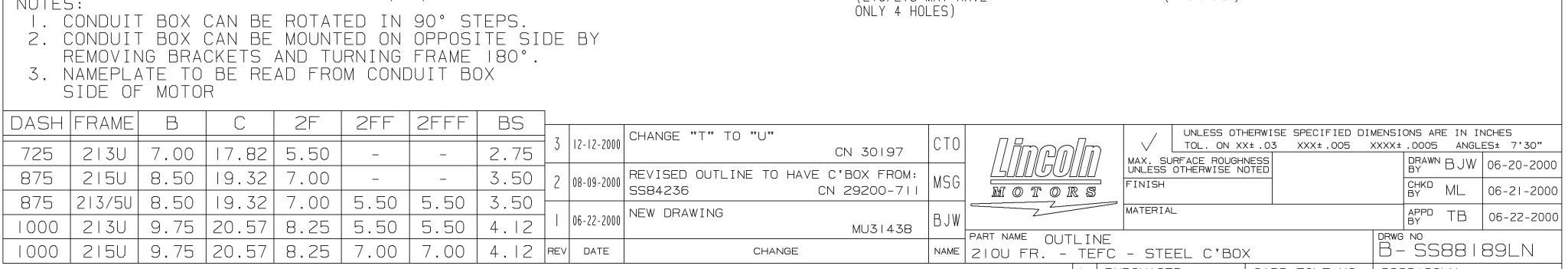
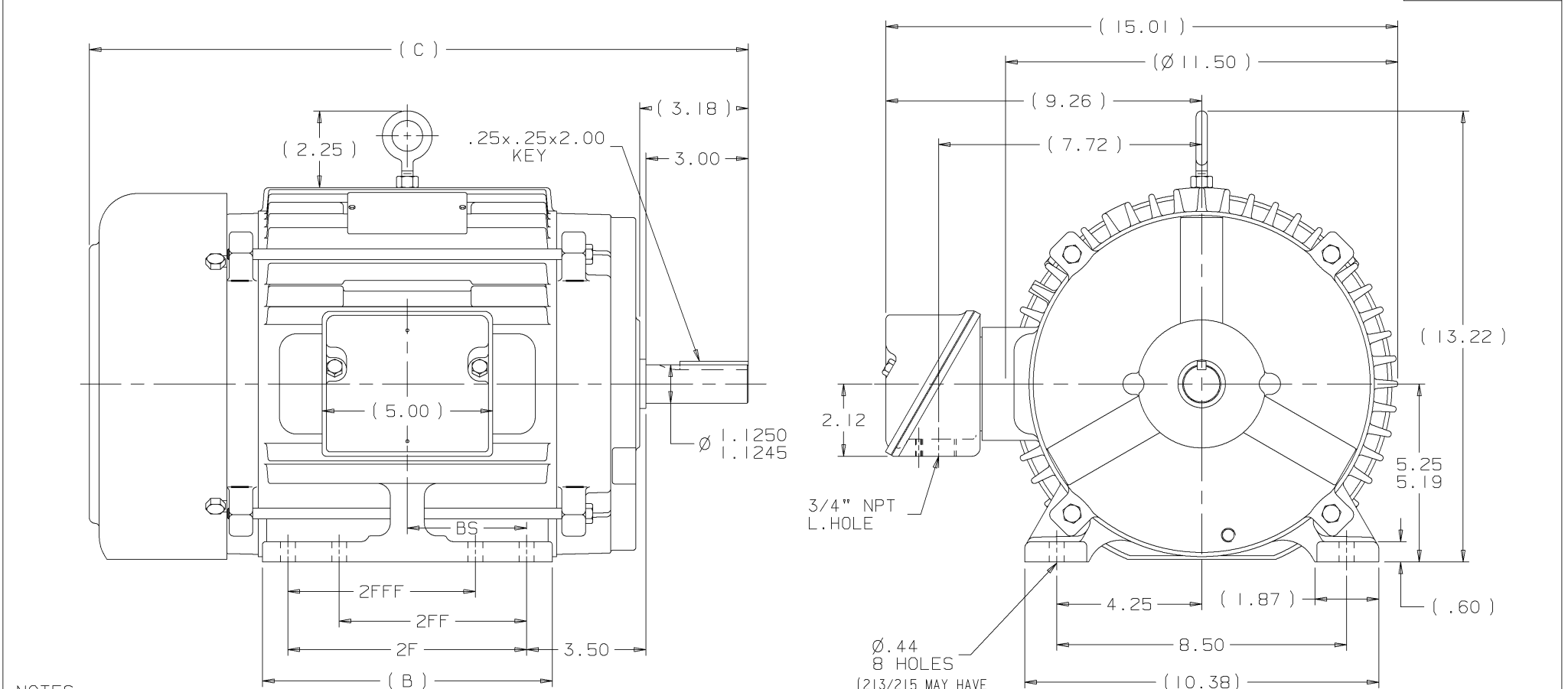
### Nameplate Specifications

Output HP	3 Hp	Output KW	2.2 kW
Frequency	60 Hz	Voltage	460 V
Current	4.0 A	Speed	1760 rpm
Service Factor	1	Phase	3
Efficiency	88.5 %	Power Factor	81
Duty	Continuous	Insulation Class	F
Design Code	B	KVA Code	K
Frame	213U	Enclosure	Totally Enclosed Fan Cooled
Thermal Protection	No Protection	Ambient Temperature	65 °C
Drive End Bearing Size	307	Opp Drive End Bearing Size	206
UL	Recognized	CSA	Y
CE	Y	IP Code	43
Number of Speeds	1		

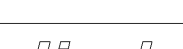
### Technical Specifications

Electrical Type	Squirrel Cage Induction Run	Starting Method	Across The Line
Poles	4	Rotation	Reversible
Resistance Main	3.62 Ohms	Mounting	Rigid Base
Motor Orientation	Horizontal	Drive End Bearing	Ball
Opp Drive End Bearing	Ball	Frame Material	Cast Iron
Shaft Type	U	Assembly/Box Mounting	F1/F2 CAPABLE
Outline Drawing	B-SS88189LN-725	Connection Drawing	A-EE7300-LN

This is an uncontrolled document once printed or downloaded and is subject to change without notice. Date Created:07/18/2022



3	12-12-2000	CHANGE "T" TO "U" CN 30197	CTO
2	08-09-2000	REVISED OUTLINE TO HAVE C*BOX FROM: SS84236 CN 29200-711	MSG
1	06-22-2000	NEW DRAWING MU31438	BJW
REV	DATE	CHANGE	NAME

	<div style="text-align: center;">✓</div>	UNLESS OTHERWISE SPECIFIED DIMENSIONS ARE IN INCHES TOL. ON XX+.03    XXX+.005    XXXX+.0005    ANGLES+ 7°30"		
		MAX. SURFACE ROUGHNESS UNLESS OTHERWISE NOTED	DRAWN BY BJW	06-20-2000
		FINISH	CHKD ML	06-21-2000
		MATERIAL	APPD TB	06-22-2000
PART NAME    OUTLINE Z10U FR. - TEFC    - STEEL C'BOX		DRWG NO B- SS88189LN		

ERROR: syntaxerror  
OFFENDING COMMAND: --nostringval--

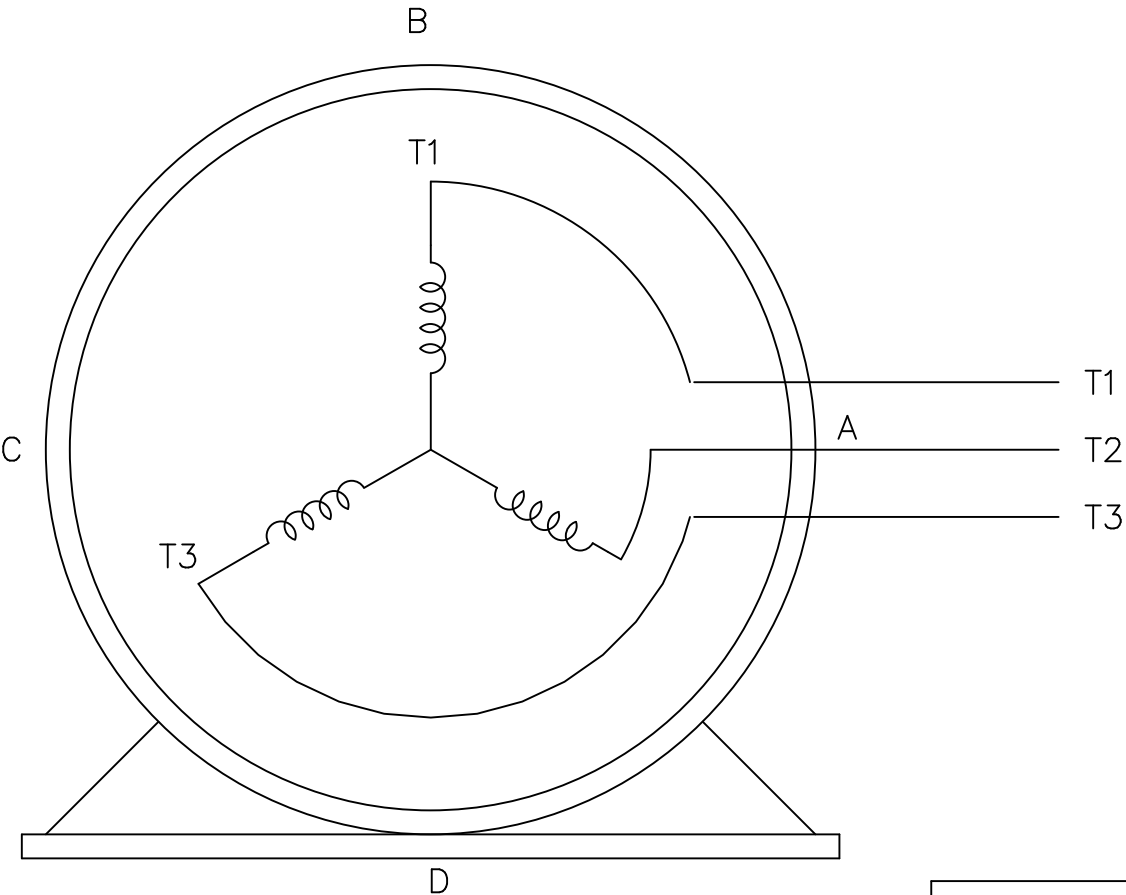
STACK:

/RS  
-dictionary-  
/Pscript\_WinNT\_Compat  
-dictionary-

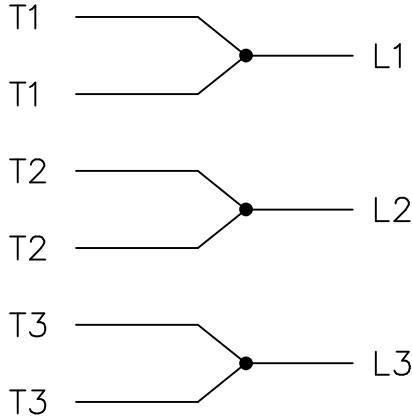
THREE PHASE – SINGLE VOLTAGE  
MOTOR – CONDUIT BOX @ 'A'

EE7300-LN

TO REVERSE ROTATION:  
INTERCHANGE ANY TWO LINE  
LEAD CONNECTIONS




IF MOTOR HAS  
6 LEADS



A-9806 DECAL

OPTIONAL CORD  
CONNECTION

L1 WHITE  
L2 RED  
L3 BLACK

				TOLERANCES UNLESS SPECIFIED			DRAWN BLR 08-13-1999			
				DEC.	INCHES		CHK ML 08-13-1999			
				.X	±.1		APPD GK 08-13-1999			
				.XX	±.02		SCALE 1=1			
2	ADDED OPTIONAL CORD CONNECTION PER MU47226	CTO 03-31-2004	PJB	.XXX	±.005	TITLE CONNECTION DIAGRAM SINGLE VOLT – 3Ø MOTOR			REF	
1	NEW DRAWING	CTO 08-13-1999		.XXXX	±.0005	MAT'L.			FMF	
NO.	REVISION	BY & DATE	CHK	ANG	±7'30"	FINISH			PREV	
THIS DRAWING IN DESIGN AND DETAIL IS OUR PROPERTY AND MUST NOT BE USED EXCEPT IN CONNECTION WITH OUR WORK ALL RIGHTS OF DESIGN AND INVENTION ARE RESERVED THIS IS AN ELECTRONICALLY GENERATED DOCUMENT – DO NOT SCALE THIS PRINT			RFP		CAD FILE EE7300_LN		SIZE	DRAWING NO.	PAGE OF	REV.
			DIST WP				A	EE7300-LN		2