

PRODUCT INFORMATION PACKET

Model No: LM21380

Catalog No: LM21380

Automotive Duty Motor, 1.50 HP, 3 Ph, 60 Hz, 460 V, 1800 RPM, 184U Frame, TENV



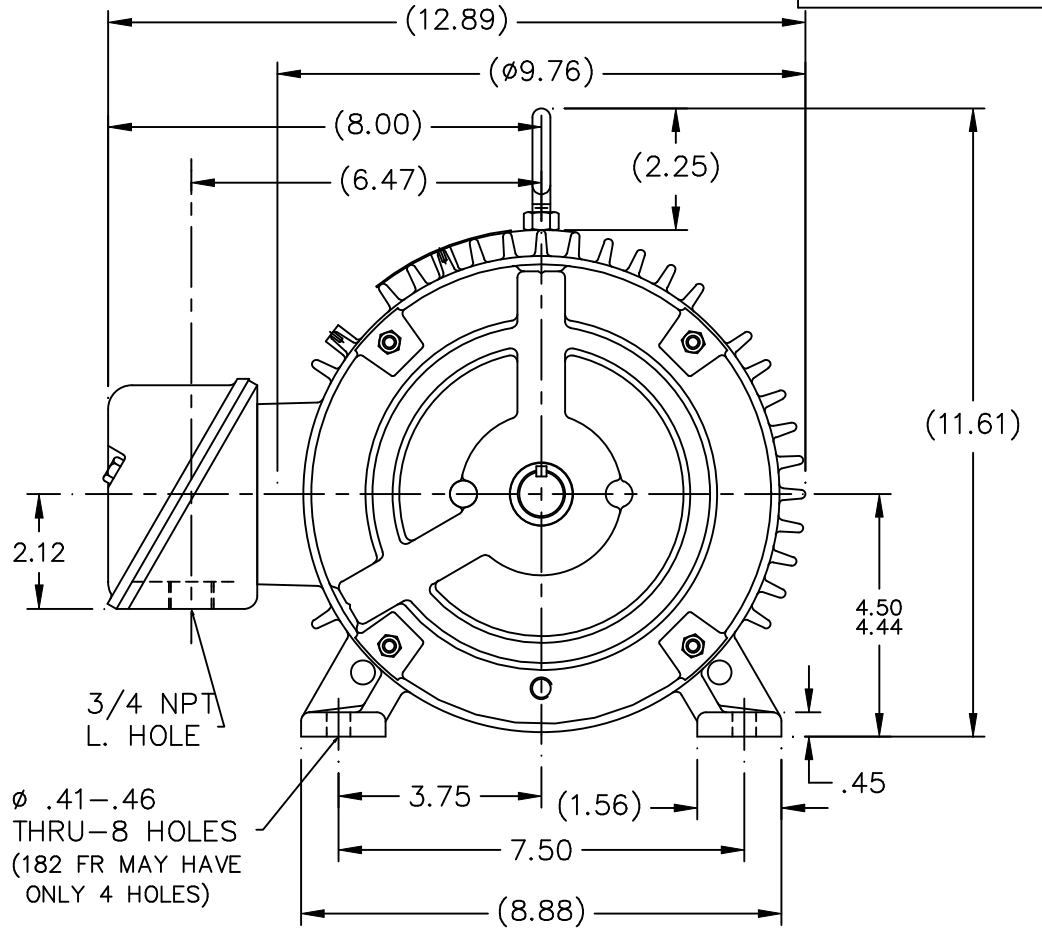
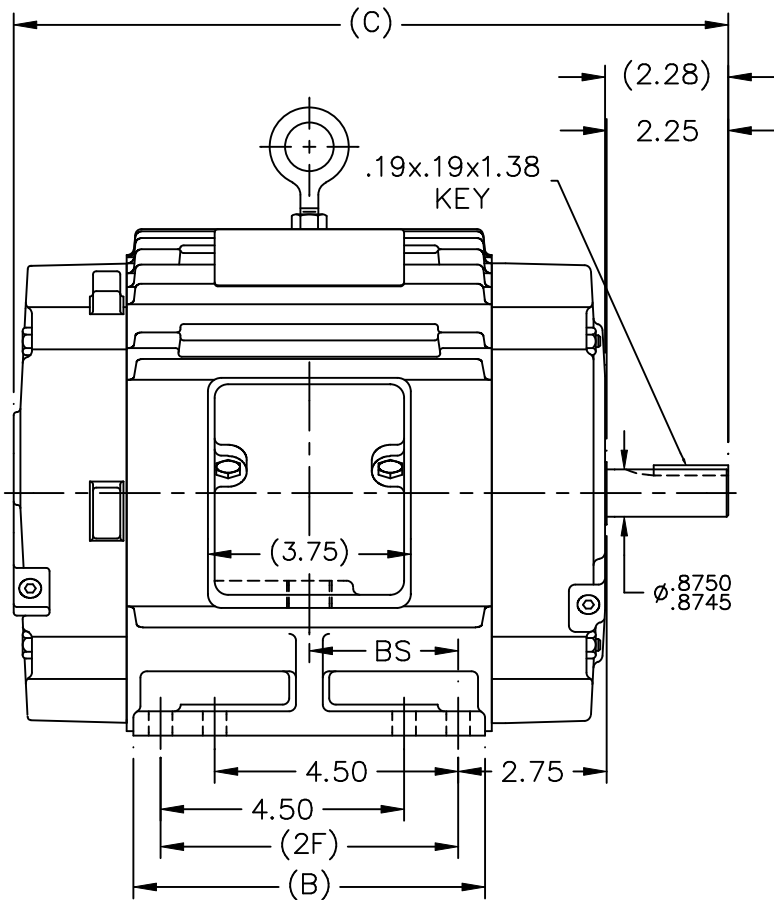
Regal and are trademarks of Regal Rexnord Corporation or one of its affiliated companies.
©2022 Regal Rexnord Corporation, All Rights Reserved. MC017097E

Nameplate Specifications

Output HP	1.50 Hp	Output KW	1.1 kW
Frequency	60 Hz	Voltage	460 V
Current	2.1 A	Speed	1770 rpm
Service Factor	1	Phase	3
Efficiency	88.5 %	Power Factor	76
Duty	Continuous	Insulation Class	F
Design Code	B	KVA Code	L
Frame	184U	Enclosure	Totally Enclosed Non Ventilated
Thermal Protection	No Protection	Ambient Temperature	65 °C
Drive End Bearing Size	206	Opp Drive End Bearing Size	205
UL	Recognized	CSA	Y
CE	Y	IP Code	43
Number of Speeds	1		

Technical Specifications

Electrical Type	Squirrel Cage Induction Run	Starting Method	Across The Line
Poles	4	Rotation	Reversible
Resistance Main	8.25 Ohms	Mounting	Rigid Base
Motor Orientation	Horizontal	Drive End Bearing	Ball
Opp Drive End Bearing	Ball	Frame Material	Cast Iron
Shaft Type	U	Overall Length	13.21 in
Frame Length	6.75 in	Shaft Diameter	0.875 in
Shaft Extension	2.25 in	Assembly/Box Mounting	F1/F2 CAPABLE
Outline Drawing	A-SS68737LN-675	Connection Drawing	A-EE7300-LN



NOTES:

1. CONDUIT BOX CAN BE ROTATED IN 90° STEPS.
2. CONDUIT BOX CAN BE MOUNTED ON OPPOSITE SIDE BY REMOVING BRACKETS AND TURNING FRAME 180°.
3. NAMEPLATE TO BE READ FROM CONDUIT BOX SIDE OF MOTOR

DASH	FR.	C	B	2F	BS	MOUNTING
575	182U	12.21	5.50	4.50	2.25	F1 ONLY
675	182U	13.21	6.50	5.50	2.75	F1 ONLY
675	184U	13.21	6.50	5.50	2.75	F1 OR F2

NO.	REVISION	BY & DATE
3	REV'D TO SHOW STUDS ON D.E. OF MOTOR.CN29200-805	NJS 08-25-2000
2	REVISED OUTLINE TO HAVE C'BOX FROM:	MSG 08-04-2000
2	A-SS68726LN CN 29200-179	
1	NEW DRAWING MU31620	BJW 06-26-2000

TOLERANCES UNLESS SPECIFIED	
DEC.	INCHES
.X	±.1
.XX	±.03
.XXX	±.005
.XXXX	±.0005
ANG	±7'30"

TITLE OUTLINE - TENV	
180U FR. - 140FR. EXT. - CAST C'BOX	
MAT'L.	FINISH



DRAWN	BJW	06-26-2000
CHK	ML	06-26-2000
APPD	TB	06-26-2000
SCALE	9=32	
REF		
FMF		
PREV		

THIS DRAWING IN DESIGN AND DETAIL IS OUR PROPERTY AND MUST NOT BE USED EXCEPT IN CONNECTION WITH OUR WORK ALL RIGHTS OF DESIGN AND INVENTION ARE RESERVED THIS IS AN ELECTRONICALLY GENERATED DOCUMENT - DO NOT SCALE THIS PRINT

RFP	CAD FILE SS68737LN
DIST LB	

SIZE	DRAWING NO.	PAGE	OF	REV.
A	SS68737LN			3

```
ERROR: syntaxerror  
OFFENDING COMMAND: --nostringval--
```

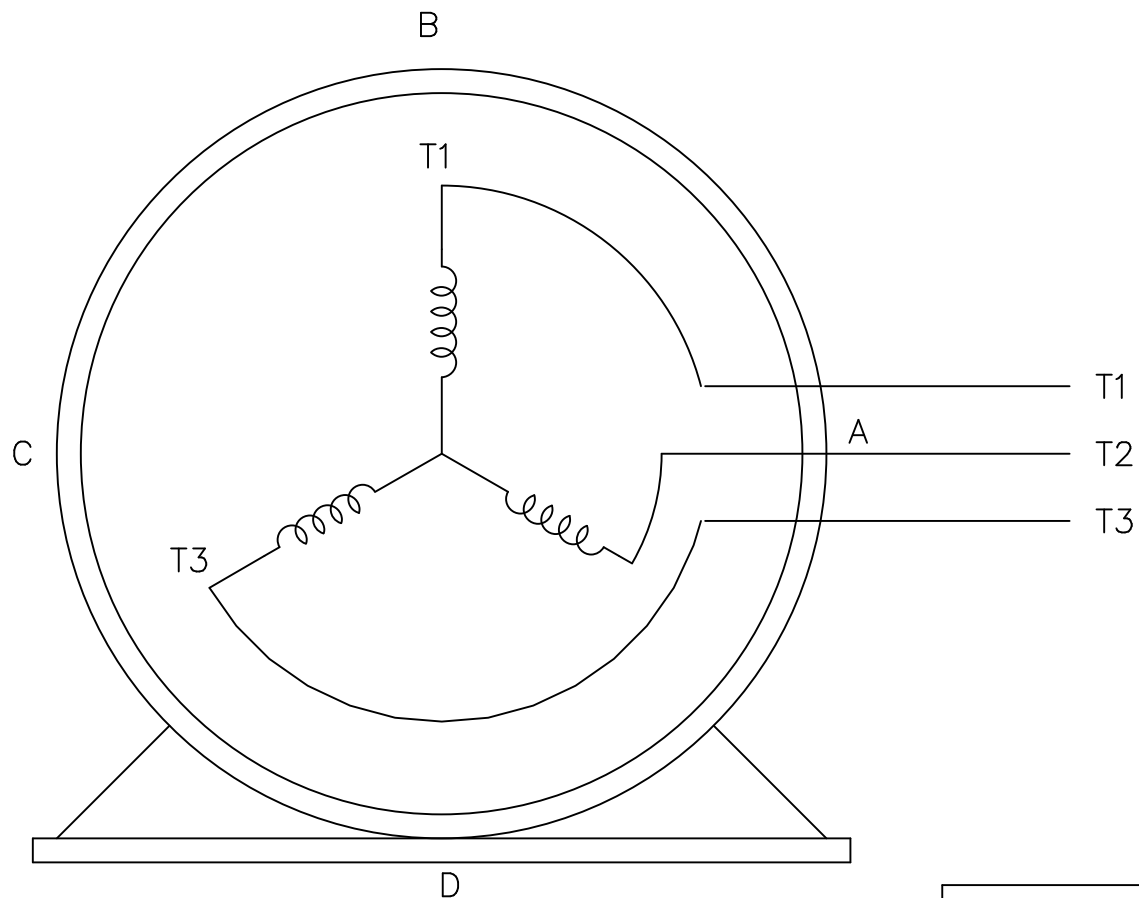
```
STACK:
```

```
/im  
-savelevel-
```

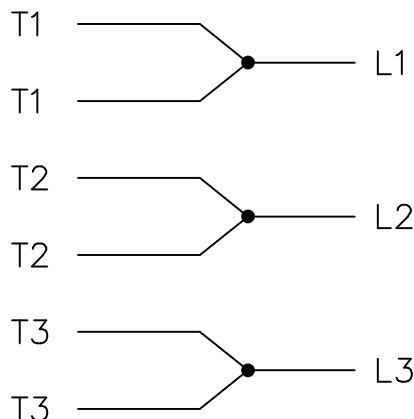
THREE PHASE – SINGLE VOLTAGE
MOTOR – CONDUIT BOX @ 'A'

EE7300-LN

TO REVERSE ROTATION:
INTERCHANGE ANY TWO LINE
LEAD CONNECTIONS



IF MOTOR HAS
6 LEADS



A-9806 DECAL

OPTIONAL CORD
CONNECTION

L1 WHITE
L2 RED
L3 BLACK

TOLERANCES
UNLESS SPECIFIED

DEC.	INCHES
.X	±.1
.XX	±.02
.XXX	±.005
.XXXX	±.0005
ANG	±7'30"



DRAWN BLR 08-13-1999

CHK ML 08-13-1999

APPD GK 08-13-1999

SCALE 1=1

REF

FMF

PREV

2 ADDED OPTIONAL CORD CONNECTION PER MU47226

CTO 03-31-2004

PJB

.XXX ±.005

TITLE CONNECTION DIAGRAM
SINGLE VOLT – 3Ø MOTOR

1 NEW DRAWING

CTO 08-13-1999

.XXXX ±.0005

MAT'L.

NO. REVISION

BY & DATE

CHK

ANG ±7'30"

FINISH

THIS DRAWING IN DESIGN AND DETAIL IS OUR PROPERTY AND MUST NOT BE USED EXCEPT
IN CONNECTION WITH OUR WORK ALL RIGHTS OF DESIGN AND INVENTION ARE RESERVED
THIS IS AN ELECTRONICALLY GENERATED DOCUMENT – DO NOT SCALE THIS PRINT

RFP

CAD FILE EE7300_LN

SIZE

DRAWING NO. PAGE OF

REV.

DIST WP

A

EE7300-LN

2

Data Sheet

Date: 2/1/2018

LM21380



Data @ **460 V**

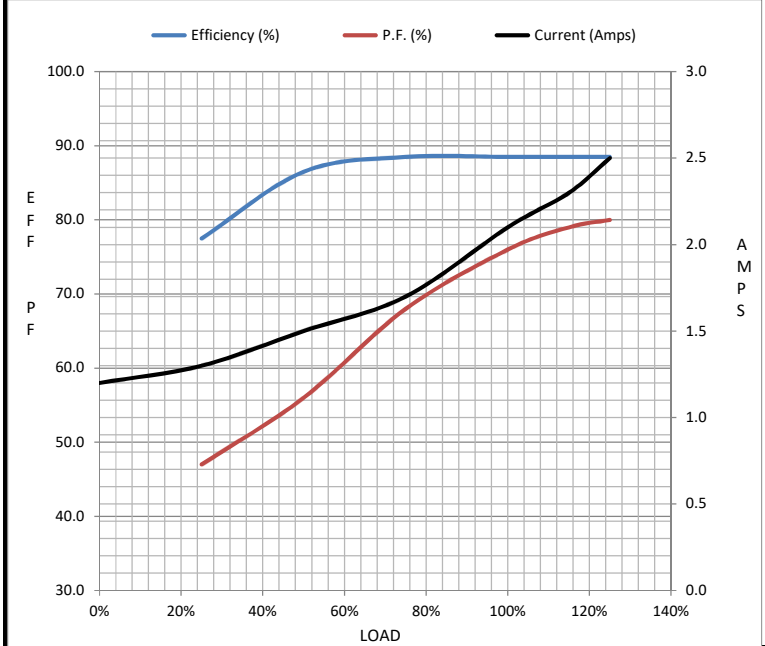
Motor Load Data

Load	0%	25%	50%	75%	100%	115%	125%	LR
Current (Amps)	1.20	1.30	1.50	1.70	2.10	2.30	2.50	18.5
Torque (ft-lb)	0.00	1.10	2.20	3.3	4.5	5.2	5.6	11.3
RPM	1800	1792	1785	1775	1770	1.765	1760	0
Efficiency (%)		77.5	86.5	88.5	88.5	88.5	88.5	
P.F. (%)	7.5	47.0	56.0	68.0	76.0	79.0	80.0	49.0

Motor Speed Data

	LR	Pull-Up	BD	Rated	Idle
Speed (RPM)	0	900	1500	1770	1800
Current (Amps)	18.5	16.5	12.0	2.10	1.20
Torque (ft-lb)	11.3	10.0	18.0	4.5	0.00

Information Block				
HP	1.5			
Sync. RPM	1800			
Frame	182			
Enclosure	TENV			
Construction	TTS			
Voltage	460 V			
Frequency	60 Hz			
Design	B			
LR Code letter	L			
Service Factor	1.15			
Temp Rise @ FL	45 °C			
Duty	CONT			
Ambient	40 °C			
Elevation	1,000 feet			
Rotor/Shaft wk ²	0.25 Lb-Ft ²			
Ref Wdg	K1824122 NONE			
Sound Pressure @ 1M	62 dBA			
VFD Rating	NONE			
Outline Dwg	A-SS68737LN-675			
Conn. Diag	A-EE7300-LN			
Additional Specifications:				
0				
0				
EQUIV CKT (OHMS / PHASE)				
R1	R2	X1	X2	Xm
4.7440	2.4380	9.4500	13.4570	223.0200



Speed - Torque Curve

