

PRODUCT INFORMATION PACKET

Model No: LM21239

Catalog No: LM21239

Speed Ratio Motors, TEFC, 300 HP, 3 Ph, 60 Hz, 460 V, 1788 RPM, 447/449T Frame



Regal and are trademarks of Regal Rexnord Corporation or one of its affiliated companies.
©2022 Regal Rexnord Corporation, All Rights Reserved. MC017097E

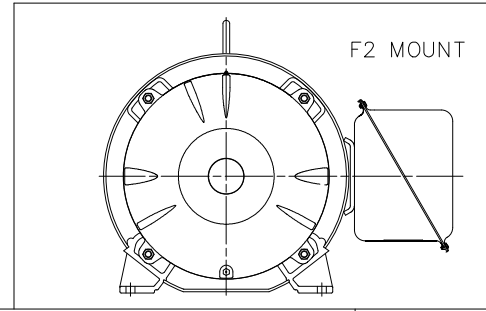
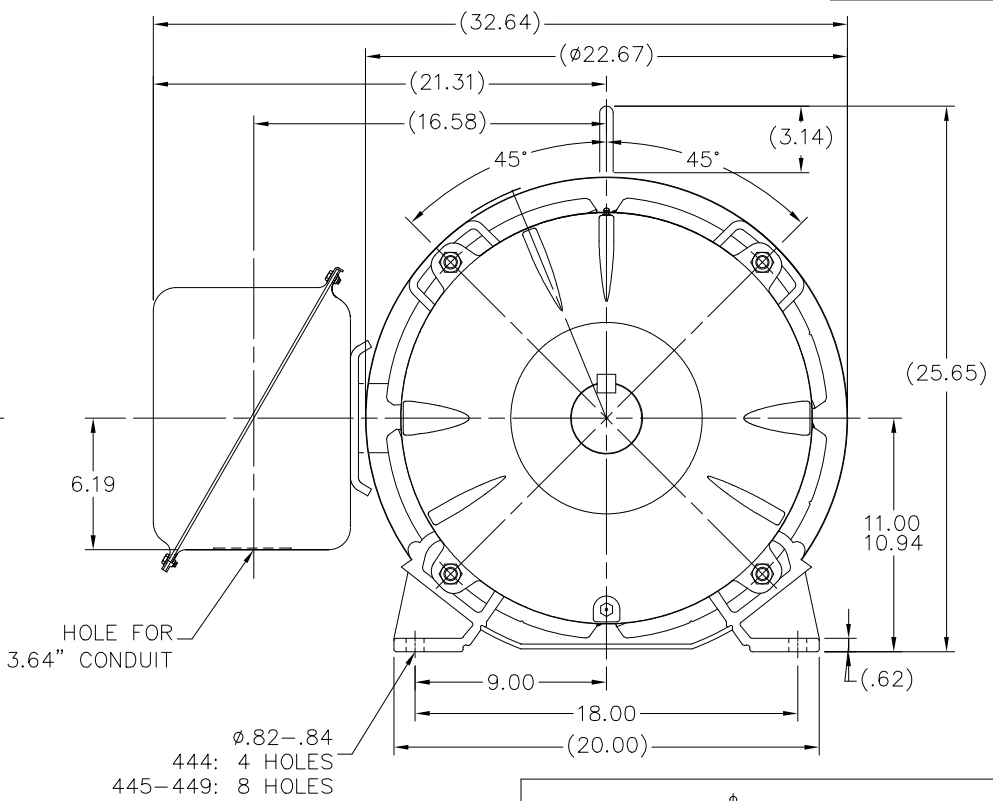
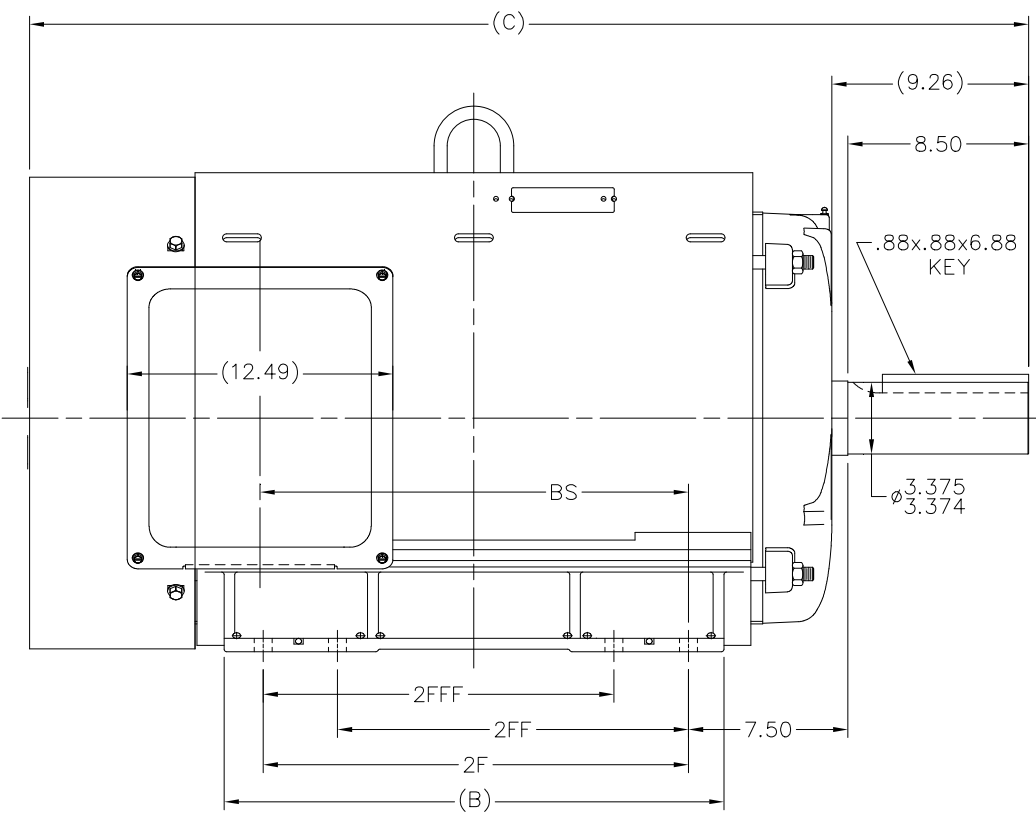
Nameplate Specifications

Output HP	300 Hp	Output KW	224.0 kW
Frequency	60 Hz	Voltage	460 V
Current	349.0 A	Speed	1788 rpm
Service Factor	1	Phase	3
Efficiency	95.8 %	Power Factor	84
Duty	Continuous	Insulation Class	F
Design Code	INV	KVA Code	H
Frame	447/449T	Enclosure	Totally Enclosed Fan Cooled
Thermal Protection	No Protection	Ambient Temperature	40 °C
Drive End Bearing Size	318	Opp Drive End Bearing Size	315
UL	Recognized	CSA	Y
CE	Y	IP Code	43
Number of Speeds	1		

Technical Specifications

Electrical Type	Squirrel Cage Inverter Duty	Starting Method	Inverter Only
Poles	4	Rotation	Reversible
Resistance Main	.0104 Ohms	Mounting	Rigid Base
Motor Orientation	Horizontal	Drive End Bearing	Ball
Opp Drive End Bearing	Ball	Frame Material	Rolled Steel
Shaft Type	T	Overall Length	52.08 in
Frame Length	31.67 in	Shaft Diameter	3.375 in
Shaft Extension	8.5 in	Assembly/Box Mounting	F1/F2 CAPABLE
Outline Drawing	XK2F1SS1-3167	Connection Drawing	A-EE7340D-LN

XK2F1SS1

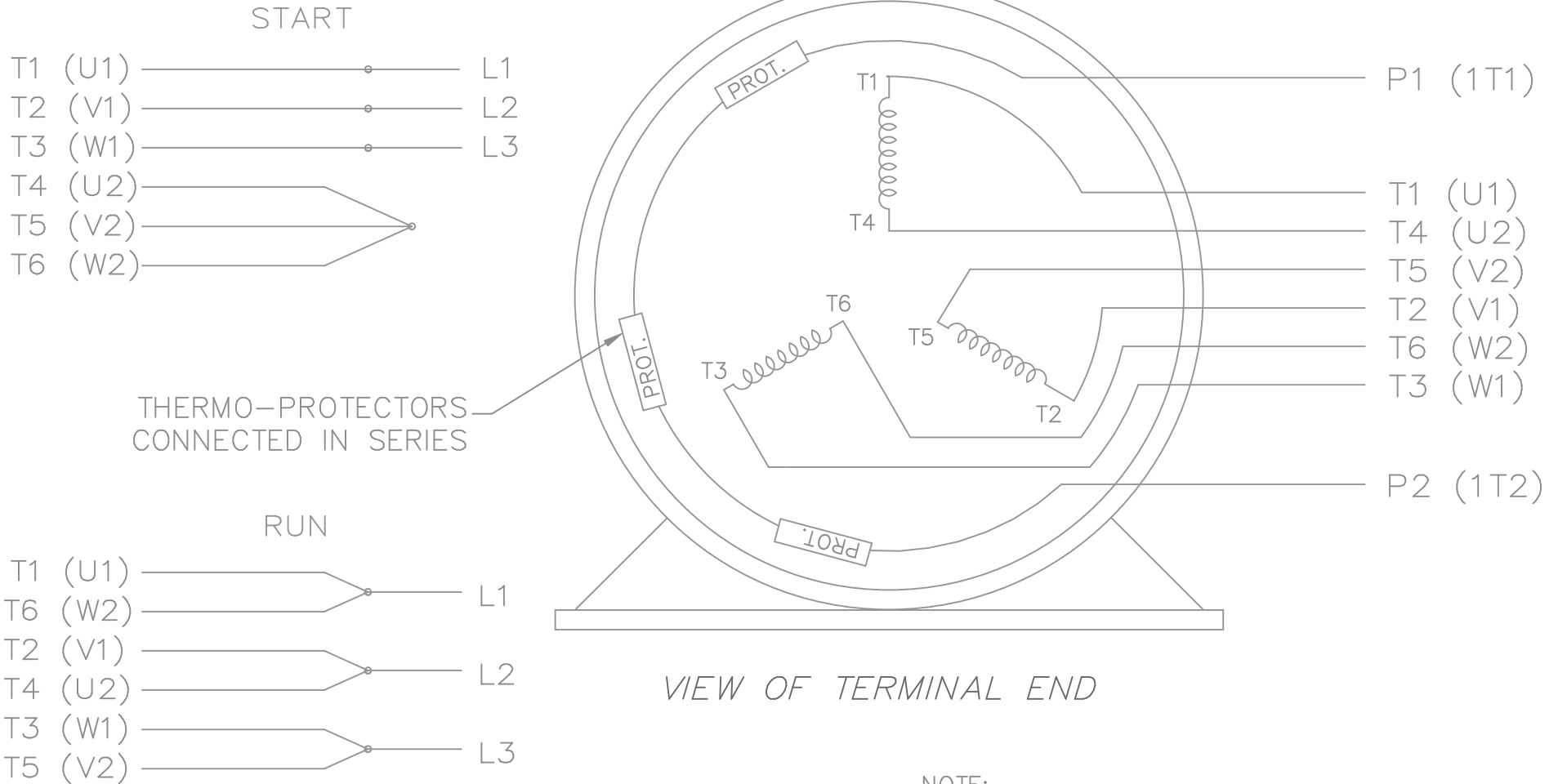


NOTES:
 1. CONDUIT BOX CAN BE ROTATED IN 90° STEPS.
 2. NAMEPLATES TO BE READ FROM CONDUIT BOX SIDE OF MOTOR.

2117	444T	41.58	--	18.00	14.50			14.62
2317	445T	43.58	--	20.00	16.50	14.50	14.50	16.64
2667	447T	47.08	--	23.50	20.00	16.50	16.50	20.14
3167	449T	52.08	--	28.50	25.00	20.00	20.00	25.14
DASH	FRAME	C	AG	B	2F	2FF	2FFF	BS

				TOLERANCES UNLESS SPECIFIED				DRAWN MSG 09-19-2001	
				DEC.	INCHES			CHK	ML 09-21-2001
				.X	±.1			APPD	HNH 09-24-2001
				.XX	±.03	TITLE		SCALE	1=6
				.XXX	±.005	OUTLINE NEMA MOTORS		REF	
				.XXXX	±.0005	440T TEFC UEI		FMF	
8	Change from 3C223-K4 to 557963 fan guard	MK	11-10-2021	VJR	.XXXX	±.0005	MAT'L	PREV	
NO.	REVISION	BY & DATE	CHK	ANG	±7'30"	FINISH			
				RFP		CAD FILE	xk2f1ss1	SIZE	DRAWING NO. PAGE OF REV.
				DIST	BY			B	XK2F1SS1 8


THREE PHASE
WYE START DELTA RUN



THERMO-PROTECTORS
CONNECTED IN SERIES

VIEW OF TERMINAL END

NOTE:
IEC LEAD MARKINGS ARE NOTED IN PARANTHESES

				TOLERANCES UNLESS SPECIFIED			DRAWN KL 11-10-2000				
				DEC.	INCHES		CHK DJK 11-10-2000				
				.X	±.1		APPD DJK 11-10-2000				
				.XX	±.02		SCALE 1=1				
2	ADDED IEC LEAD MARKINGS	MSG 10-08-2008	ML	.XXX	±.005	TITLE CONNECTION DIAGRAM - EXTERNAL - 3φ WYE START DELTA RUN - SINGLE VOLTAGE		REF			
1	NEW DRAWING MU34618	KL 11-10-2000	DJK	.XXXX	±.0005	MAT'L.		FMF			
NO.	REVISION	BY & DATE	CHK	ANG	±7'30"	FINISH		PREV			
THIS DRAWING IN DESIGN AND DETAIL IS OUR PROPERTY AND MUST NOT BE USED EXCEPT IN CONNECTION WITH OUR WORK ALL RIGHTS OF DESIGN AND INVENTION ARE RESERVED THIS IS AN ELECTRONICALLY GENERATED DOCUMENT - DO NOT SCALE THIS PRINT				RFP	11-10-2000	CAD FILE EE7340D_LN		SIZE A	DRAWING NO. EE7340D_LN	PAGE OF 2	REV. 2



1051 CHEYENNE AVE.
GRAFTON, WI 53024
PH. 262-277-8810

DATA VOLTS: 460

CERTIFICATION DATA SHEET

CONN. DIAGRAM: A-EE7340D-LN
OUTLINE: XK2F1SS1-3167
WINDING: L4494036

CAT #: LM21239

R1 1

TYPICAL MOTOR PERFORMANCE DATA

HP	KW	SYNC RPM	FL RPM	FRAME	ENCLOSURE	TYPE	KVA CODE	DESIGN
300	224	1800	1788	447/449T	TEFC	TFR	H	INC

PH	HZ	VOLTS	AMPS	START TYPE	DUTY	INSL	S.F.	AMB	ELEV.
3	60	460	349	INVERTER ONLY	CONT	F	1.15	40	3300

F.L. EFF	95.8	3/4 LD EFF	95.8	1/2 LD EFF	95.0	GTD EFF	ELECT. TYPE
F.L. PF	84.0	3/4 LD PF	81.0	1/2 LD PF	73.5	95.0	SQ CAGE INV DUTY

F.L. TORQUE	LR AMPS @ 460 V	L.R. TORQUE	B.D. TORQUE	F.L. RISE (° C)
881 LB-FT	2,550	2,525 LB-FT 287%	2,300 LB-FT 261%	65

PRESSURE @ 3	SOUND	POWER	ROTOR WK²	MAX. LOAD WK²	SAFE STALL TIME	STARTS/HOUR	MOTOR WGT
999 dBA	1008 dBA		0.00 LB-FT²	0 LB-FT²	0 SEC.	0	0 LB.

***** SUPPLEMENTAL INFORMATION *****

DE BRACKET TYPE	ODE BRACKET TYPE	MOUNT TYPE	MOTOR ORIENTATION	SEVERE DUTY	HAZARDOUS LOCATION	DRIP COVER	SCREENS	PAINT
STANDARD	STANDARD	RIGID	HORIZONTAL	NO	NONE	NO	NONE	WATTSAVER

BEARINGS		GREASE	SHAFT TYPE	SPECIAL DE	SPECIAL ODE	SHAFT MATERIAL	FRAME MATERIAL
DE	ODE	POLYREX EM	T	NONE	NONE	1045 HOT ROLLED (C-204)	ROLLED STEEL
BALL	BALL						
318	315						

THERMOSTATS	PROTECTORS	WDG RTD's	BRG RTD's	THERMISTORS	CONTROL	SPACE HEATERS
TSTATS (N/C)	NOT	NONE	NONE	NONE	FALSE	NA

R1 (ohms/ph)	R2 (ohms/ph)	X1 (ohms/ph)	X2 (ohms/ph)	Xm (ohms/ph)	VIBRATION (in/sec)	FLOAT
0.009	0.006	0.069	0.098	2.363	0.150	ODE

* N O T E S *	INVERTER TORQUE: CONSTANT 4:1 INV. HP SPEED RANGE: NONE	
	ENCODER: NONE NONE NONE	
	BRAKE: NONE NONE NONE	
	FT-LB: NA VOLTAGE: NONE	
	HZ: NONE PPR	

DATE:	9/10/2018	UL: V-INS, CONST UL REC
-------	-----------	-------------------------

Data Sheet

Date: 9/10/2018

LM21239



Data @ **460 V**

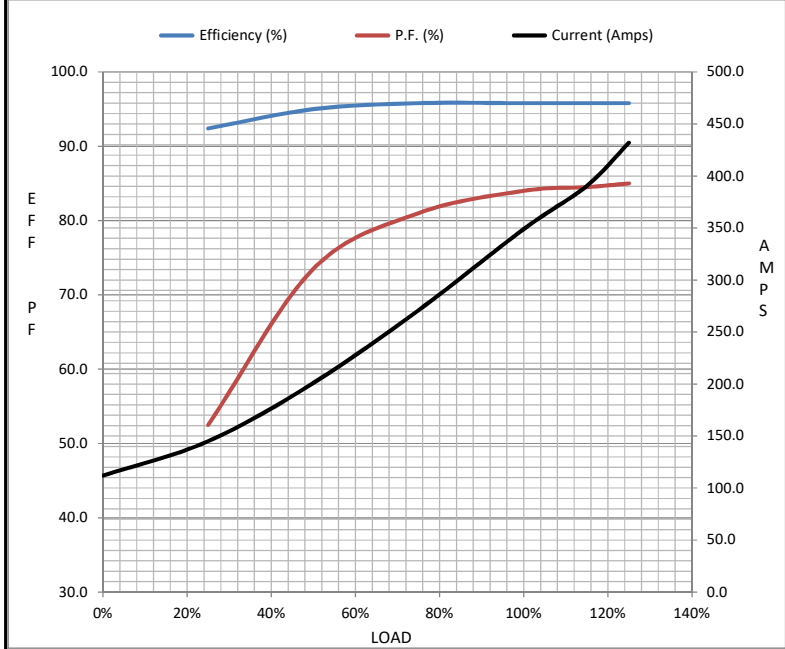
Motor Load Data

Load	0%	25%	50%	75%	100%	115%	125%	LR
Current (Amps)	112	145	201	271	349	391	432	2,550
Torque (ft-lb)	0.00	219	439	660	881	993	1,104	2,525
RPM	1800	1797	1794	1791	1788	1,787	1785	0
Efficiency (%)		92.4	95.0	95.8	95.8	95.8	95.8	
P.F. (%)	5.0	52.5	73.5	81.0	84.0	84.5	85.0	38.0

Motor Speed Data

	LR	Pull-Up	BD	Rated	Idle
Speed (RPM)	0	900	1725	1788	1800
Current (Amps)	2,550	2,350	1,700	349	112
Torque (ft-lb)	2,525	2,275	2,300	881	0.00

Information Block				
HP	300.0			
Sync. RPM	1800			
Frame	449			
Enclosure	TEFC			
Construction	TFR			
Voltage	460 V			
Frequency	60 Hz			
Design	A			
LR Code letter	H			
Service Factor	1.0			
Temp Rise @ FL	65 ° C			
Duty	CONT			
Ambient	40 ° C			
Elevation	1,000 feet			
Rotor/Shaft wk ²	0.00 Lb-Ft ²			
Ref Wdg	L4494036 R1			
Sound Pressure @ 1M	999 dBA			
VFD Rating	CONSTANT 4:1			
Outline Dwg	XK2F1SS1-3167			
Conn. Diag	A-EE7340D-LN			
Additional Specifications:				
0				
0				
EQUIV CKT (OHMS / PHASE)				
R1	R2	X1	X2	Xm
0.0090	0.0060	0.0690	0.0980	2.3630



Speed - Torque Curve

