

# PRODUCT INFORMATION PACKET

Model No: LM21223

Catalog No: LM21223

Speed Ratio Motors, TEFC, 75 HP, 3 Ph, 60 Hz, 230/460 V, 1785 RPM, 365T Frame



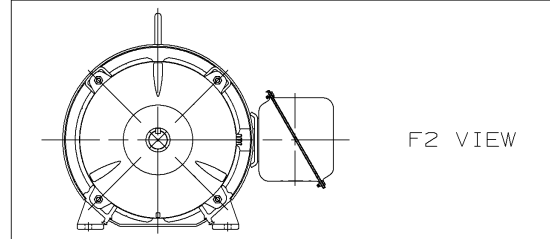
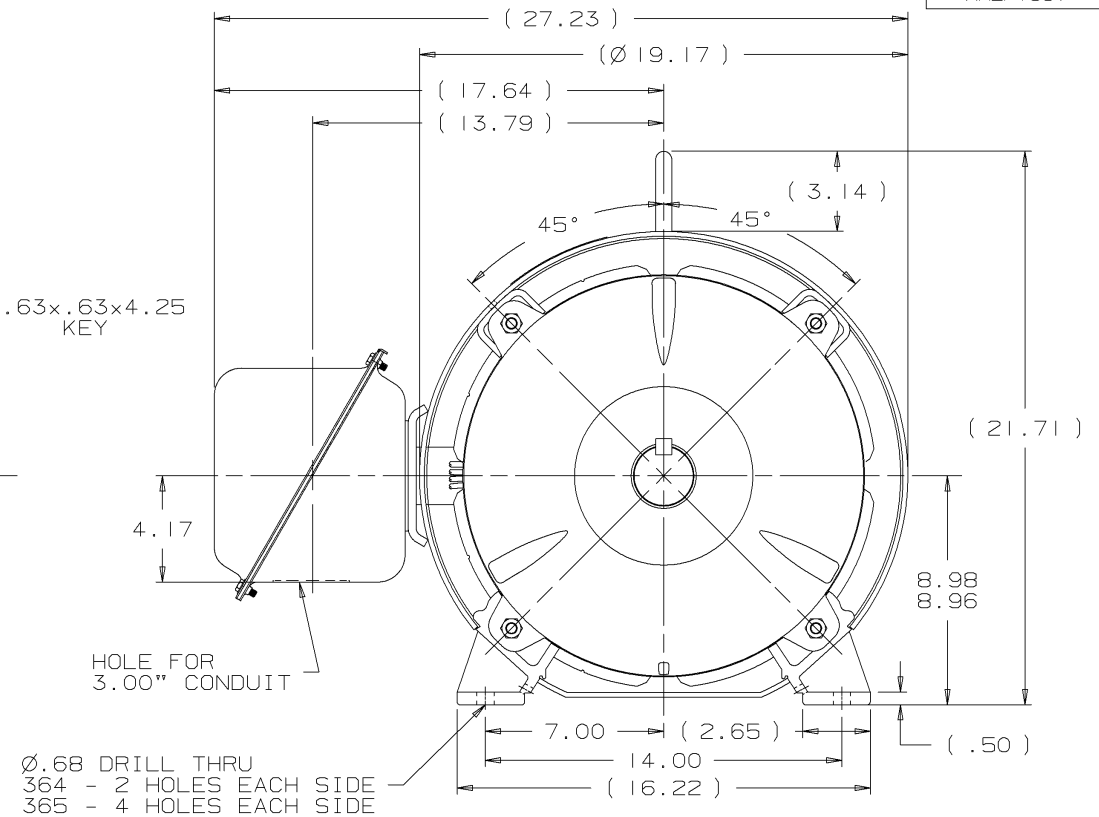
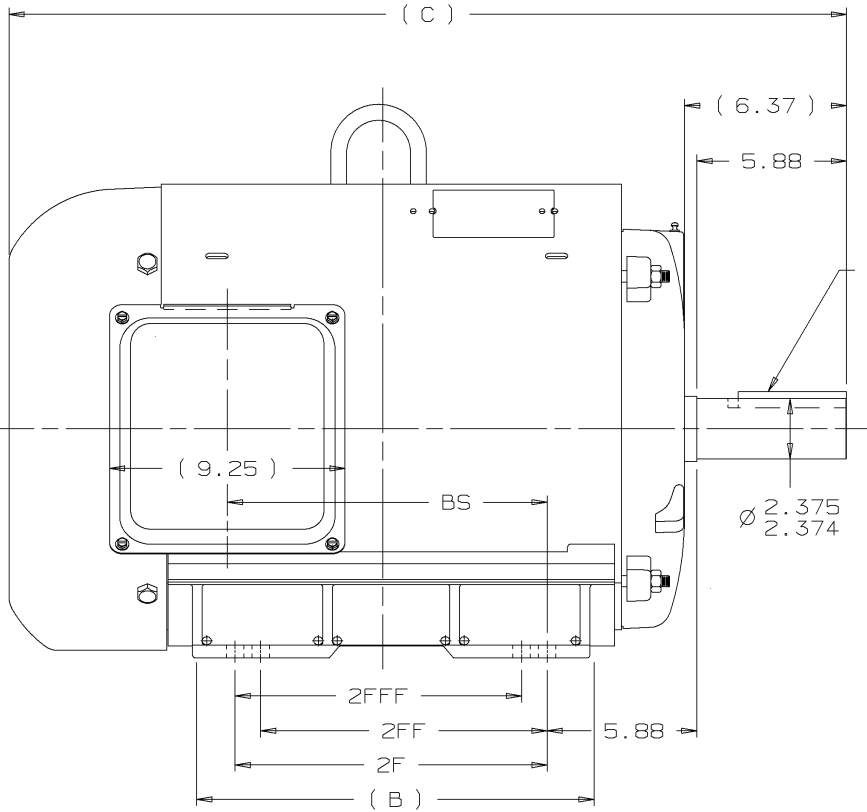
Regal and are trademarks of Regal Rexnord Corporation or one of its affiliated companies.  
©2022 Regal Rexnord Corporation, All Rights Reserved. MC017097E

### Nameplate Specifications

Output HP	<b>75 Hp</b>	Output KW	<b>56.0 kW</b>
Frequency	<b>60 Hz</b>	Voltage	<b>230/460 V</b>
Current	<b>187.0/93.5 A</b>	Speed	<b>1785 rpm</b>
Service Factor	<b>1</b>	Phase	<b>3</b>
Efficiency	<b>94.1 %</b>	Power Factor	<b>81</b>
Duty	<b>Continuous</b>	Insulation Class	<b>F</b>
Design Code	<b>INV</b>	KVA Code	<b>G</b>
Frame	<b>365T</b>	Enclosure	<b>Totally Enclosed Fan Cooled</b>
Thermal Protection	<b>No Protection</b>	Ambient Temperature	<b>40 °C</b>
Drive End Bearing Size	<b>313</b>	Opp Drive End Bearing Size	<b>311</b>
UL	<b>Recognized</b>	CSA	<b>Y</b>
CE	<b>Y</b>	IP Code	<b>43</b>
Number of Speeds	<b>1</b>		

### Technical Specifications

Electrical Type	<b>Squirrel Cage Inverter Duty</b>	Starting Method	<b>Inverter Only</b>
Poles	<b>4</b>	Rotation	<b>Reversible</b>
Resistance Main	<b>.082 Ohms</b>	Mounting	<b>Rigid Base</b>
Motor Orientation	<b>Horizontal</b>	Drive End Bearing	<b>Ball</b>
Opp Drive End Bearing	<b>Ball</b>	Frame Material	<b>Rolled Steel</b>
Shaft Type	<b>T</b>	Overall Length	<b>32.90 in</b>
Frame Length	<b>17.70 in</b>	Shaft Diameter	<b>2.375 in</b>
Shaft Extension	<b>5.88 in</b>	Assembly/Box Mounting	<b>F1 ONLY</b>
Outline Drawing	<b>XH2F1SS1-1770</b>	Connection Drawing	<b>A-EE7308BZ-LN</b>



NOTES:  
 1. CONDUIT BOX CAN BE ROTATED IN 90° STEPS.  
 2. NAMEPLATES TO BE READ FROM CONDUIT BOX SIDE OF MOTOR.

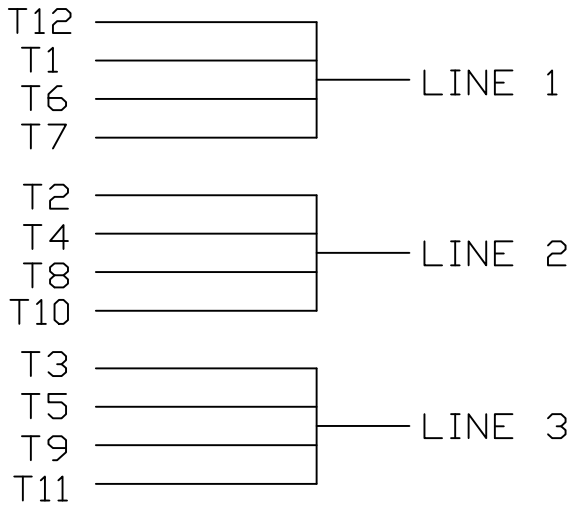
DASH	FRAME	C	BS	B	2F	2FF	2FFF	REV	DATE	CHANGE	NAME	PART NAME	DRWG NO
1670	364T	31.90	11.56	14.61	11.25			1	10-31-2002	NEW DRAWING	CTO	360T TEFC UE1	XH2F1SS1
1770	365T	32.90	12.56	15.61	12.25	11.25	11.25						

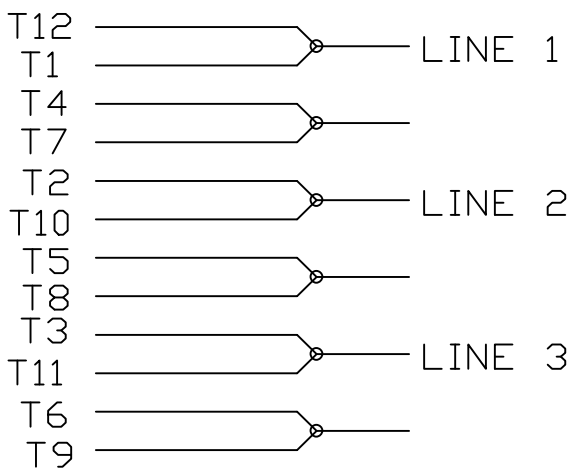
MU44106	CTO	UNLESS OTHERWISE SPECIFIED DIMENSIONS ARE IN INCHES TOL. ON XX±.02 XXX±.005 XXXX±.0005 ANGLES± 7'30"	MAX. SURFACE ROUGHNESS UNLESS OTHERWISE NOTED	DRAWN BY CTO	10-31-2002
		FINISH		CHKD BY ML	10-31-2002
		MATERIAL		APPD BY HNH	10-31-2002

LINECOLN MOTORS  
 PART NAME OUTLINE NEMA MOTORS  
 360T TEFC UE1  
 DISTRIBUTION ~~W~~ - ~~X~~ - ~~W~~ - BY | CADD FILE NO. XH2F1SS1

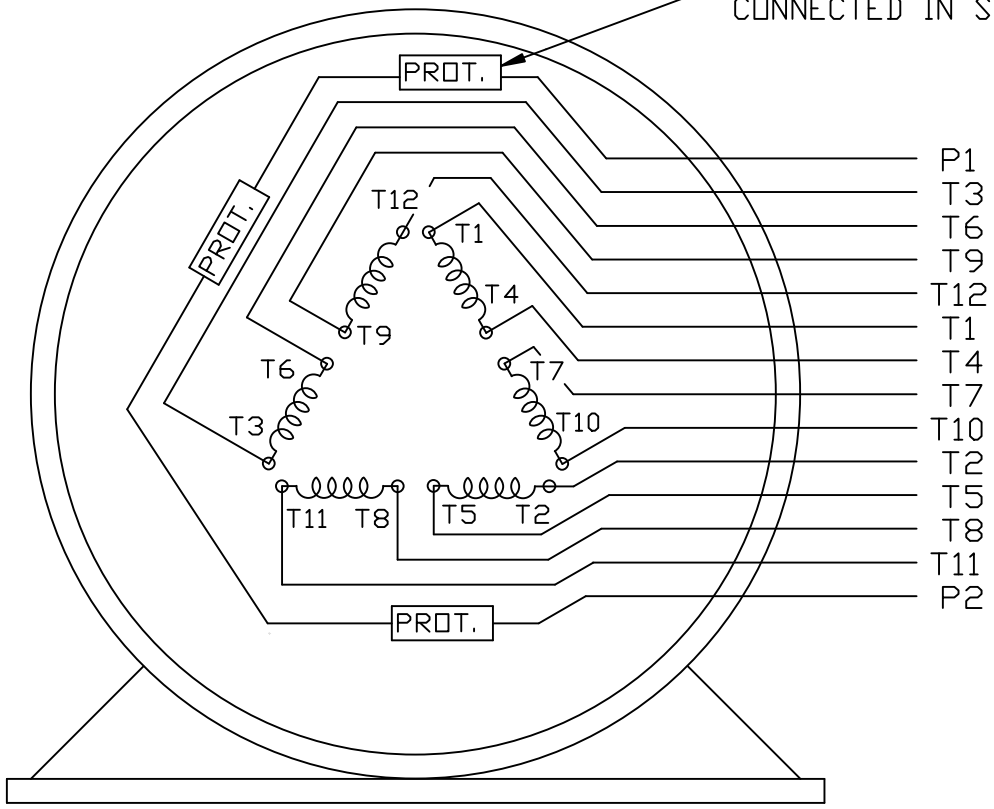
LOW VOLTAGE



HIGH VOLTAGE



THERMO - PROTECTORS  
CONNECTED IN SERIES.



VIEW OF TERMINAL END

					✓ UNLESS OTHERWISE SPECIFIED DIMENSIONS ARE IN INCHES TOL. ON XX±      XXX±      XXXX±      ANGLES±				
2	08/17/2011	REMOVED NOTE '12 LEADS SINGLE VOLTAGE'	MU103768		RFH	MAX. SURFACE ROUGHNESS UNLESS OTHERWISE NOTED		DRAWN BY KL	12-11-2000
1	12-11-2000	NEW DRAWING	MU34925		KL	FINISH		CHKD BY DJK	12-11-2000
REV		DATE	CHANGE	NAME	PART NAME EXTERNAL CONNECTION DIAGRAM 3 PHASE - 2/1 DELTA - 12 LEADS				DRWG NO A- EE7308BZ-LN
					PURCHASED		CADD FILE NO.		EE7308BZ-LN

Data Sheet

Date: 1/30/2018

LM21223



Data @ 460 V

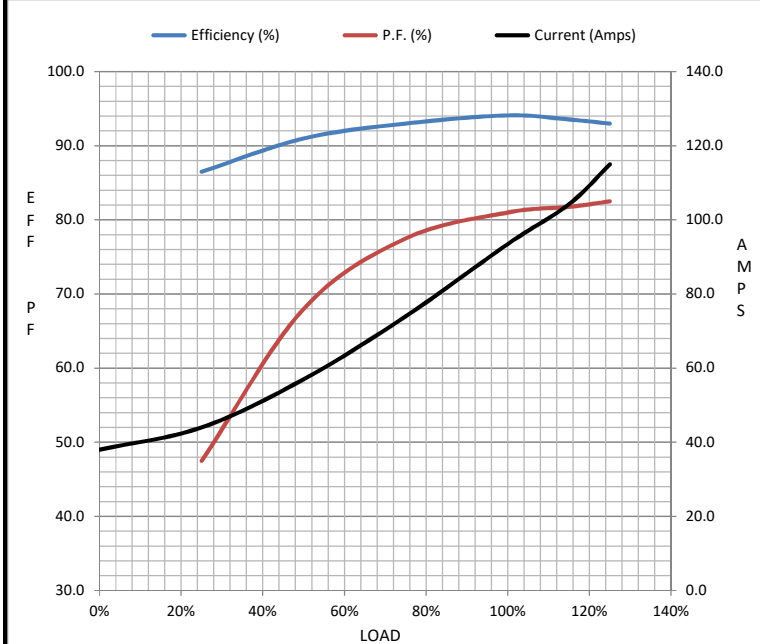
Motor Load Data

Load	0%	25%	50%	75%	100%	115%	125%	LR
Current (Amps)	38.0	44.0	57.0	74.0	93.5	104	115	542
Torque (ft-lb)	0.00	55.0	110	165	221	249	277	410
RPM	1800	1798	1795	1790	1785	1.783	1780	0
Efficiency (%)		86.5	91.0	93.0	94.1	93.6	93.0	
P.F. (%)	10.0	47.5	68.0	77.5	81.0	81.8	82.5	35.0

Motor Speed Data

	LR	Pull-Up	BD	Rated	Idle
Speed (RPM)	0	900	1710	1785	1800
Current (Amps)	542	485	330	93.5	38.0
Torque (ft-lb)	410	370	600	221	0.00

Information Block				
HP	75.0			
Sync. RPM	1800			
Frame	365			
Enclosure	TEFC			
Construction	TFR			
Voltage	230/460 V			
Frequency	60 Hz			
Design	B			
LR Code letter	G			
Service Factor	1.0			
Temp Rise @ FL	60 °C			
Duty	CONT			
Ambient	40 °C			
Elevation	1,000 feet			
Rotor/Shaft wk <sup>2</sup>	0.00 Lb-Ft <sup>2</sup>			
Ref Wdg	C3654002 C			
Sound Pressure @ 1M	999 dBA			
VFD Rating	CONSTANT 4:1			
Outline Dwg	XH2F1SS1-1770			
Conn. Diag	A-EE7308BZ-LN			
Additional Specifications:				
0				
0				
EQUIV CKT (OHMS / PHASE)				
R1	R2	X1	X2	Xm
0.0600	0.0260	0.3020	0.4650	7.5600



Speed - Torque Curve

