

# PRODUCT INFORMATION PACKET

Model No: LM21199

Catalog No: LM21199

Speed Ratio Motor, 10 HP, 3 Ph, 60 Hz, 230/460 V, 1800 RPM, 215T Frame, TEFC



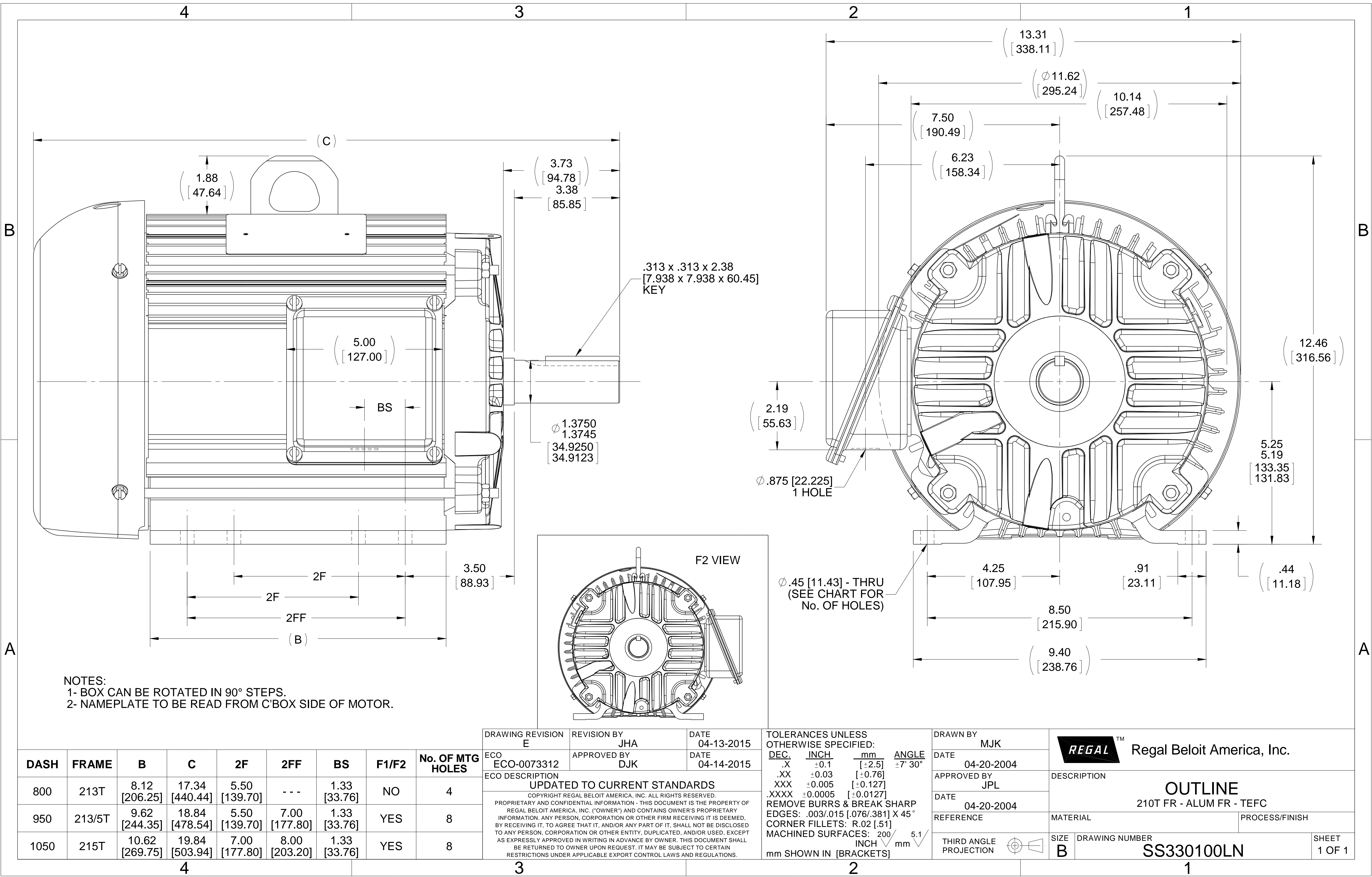
Regal and are trademarks of Regal Rexnord Corporation or one of its affiliated companies.  
©2022 Regal Rexnord Corporation, All Rights Reserved. MC017097E

## Nameplate Specifications

Output HP	10 Hp	Output KW	7.5 kW
Frequency	60 Hz	Voltage	230/460 V
Current	25.4/12.7 A	Speed	1755 rpm
Service Factor	1.15	Phase	3
Efficiency	90.2 %	Power Factor	81.5
Duty	Continuous	Insulation Class	F
Design Code	INV	KVA Code	G
Frame	215T	Enclosure	Totally Enclosed Fan Cooled
Thermal Protection	No Protection	Ambient Temperature	40 °C
Drive End Bearing Size	6208	Opp Drive End Bearing Size	6206
UL	No	CSA	Y
CE	Y	IP Code	43
Number of Speeds	1		

## Technical Specifications


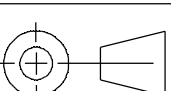
Electrical Type	Squirrel Cage Inverter Duty	Starting Method	Inverter Only
Poles	4	Rotation	Reversible
Resistance Main	1.16 Ohms	Mounting	Rigid Base
Motor Orientation	Horizontal	Drive End Bearing	Ball
Opp Drive End Bearing	Ball	Frame Material	Aluminum
Shaft Type	T	Overall Length	18.84 in
Frame Length	9.50 in	Shaft Diameter	1.375 in
Shaft Extension	3.38 in	Assembly/Box Mounting	F1/F2 CAPABLE
Inverter Load	CONSTANT 4:1		
Outline Drawing	B-SS330100LN-950	Connection Drawing	A-EE7308T-LN



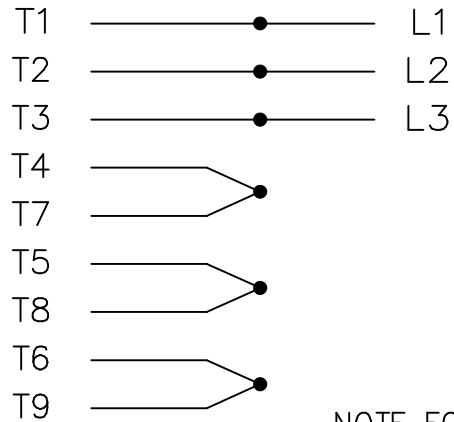
DASH	FRAME	B	C	2F	2FF	BS	F1/F2	No. OF MTG HOLES
800	213T	8.12 [206.25]	17.34 [440.44]	5.50 [139.70]	---	1.33 [33.76]	NO	4
950	213/5T	9.62 [244.35]	18.84 [478.54]	5.50 [139.70]	7.00 [177.80]	1.33 [33.76]	YES	8
1050	215T	10.62 [269.75]	19.84 [503.94]	7.00 [177.80]	8.00 [203.20]	1.33 [33.76]	YES	8

DRAWING REVISION	REVISION BY	DATE
E	JHA	04-13-2015
ECO	DJK	04-14-2015
ECO-0073312		
ECO DESCRIPTION		
UPDATED TO CURRENT STANDARDS		
COPYRIGHT REGAL BELOIT AMERICA, INC. ALL RIGHTS RESERVED. PROPRIETARY AND CONFIDENTIAL INFORMATION - THIS DOCUMENT IS THE PROPERTY OF REGAL BELOIT AMERICA, INC. ("OWNER") AND CONTAINS OWNER'S PROPRIETARY INFORMATION. ANY PERSON, CORPORATION OR OTHER FIRM RECEIVING IT IS DEEMED, BY RECEIVING IT, TO AGREE THAT IT, AND/OR ANY PART OF IT, SHALL NOT BE DISCLOSED TO ANY PERSON, CORPORATION OR OTHER ENTITY, DUPLICATED, AND/OR USED, EXCEPT AS EXPRESSLY APPROVED IN WRITING IN ADVANCE BY OWNER. THIS DOCUMENT SHALL BE RETURNED TO OWNER UPON REQUEST. IT MAY BE SUBJECT TO CERTAIN RESTRICTIONS UNDER APPLICABLE EXPORT CONTROL LAWS AND REGULATIONS.		

TOLERANCES UNLESS OTHERWISE SPECIFIED:			
DEC.	INCH	mm	ANGLE
.X	$\pm 0.1$	[ $\pm 2.5$ ]	$\pm 7^{\circ} 30'$
.XX	$\pm 0.03$	[ $\pm 0.76$ ]	
.XXX	$\pm 0.005$	[ $\pm 0.127$ ]	
.XXXX	$\pm 0.0005$	[ $\pm 0.0127$ ]	
REMOVE BURRS & BREAK SHARP EDGES: .003/.015 [0.076/.381] X 45° CORNER FILLETS: R.02 [.51] MACHINED SURFACES: 200 INCH 5.1 mm			
mm SHOWN IN [BRACKETS]			

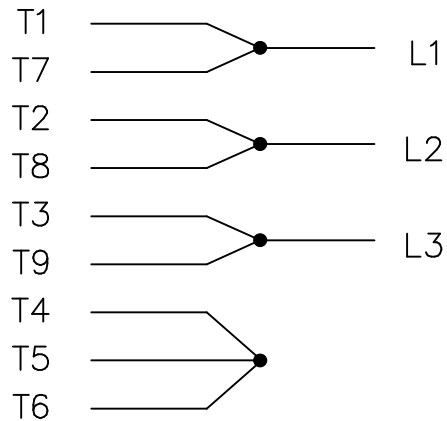
DRAWN BY	 Regal Beloit America, Inc.		
MJK			
DATE	04-20-2004		
APPROVED BY	JPL		
DATE	04-20-2004		
REFERENCE	DESCRIPTION		
	210T FR - ALUM FR - TEFC		
THIRD ANGLE PROJECTION	SIZE	DRAWING NUMBER	SHEET
	B	SS330100LN	1 OF 1

# HIGH VOLTAGE



NOTE FOR FACTORY USE ONLY:  
TO SURGE TEST FOR COMMON CONNECT:  
HIGH VOLT: CONNECT P1 TO T1  
THEN P2 TO L1  
LOW VOLT: CONNECT P1 TO T1 & T7,  
THEN P2 TO L1

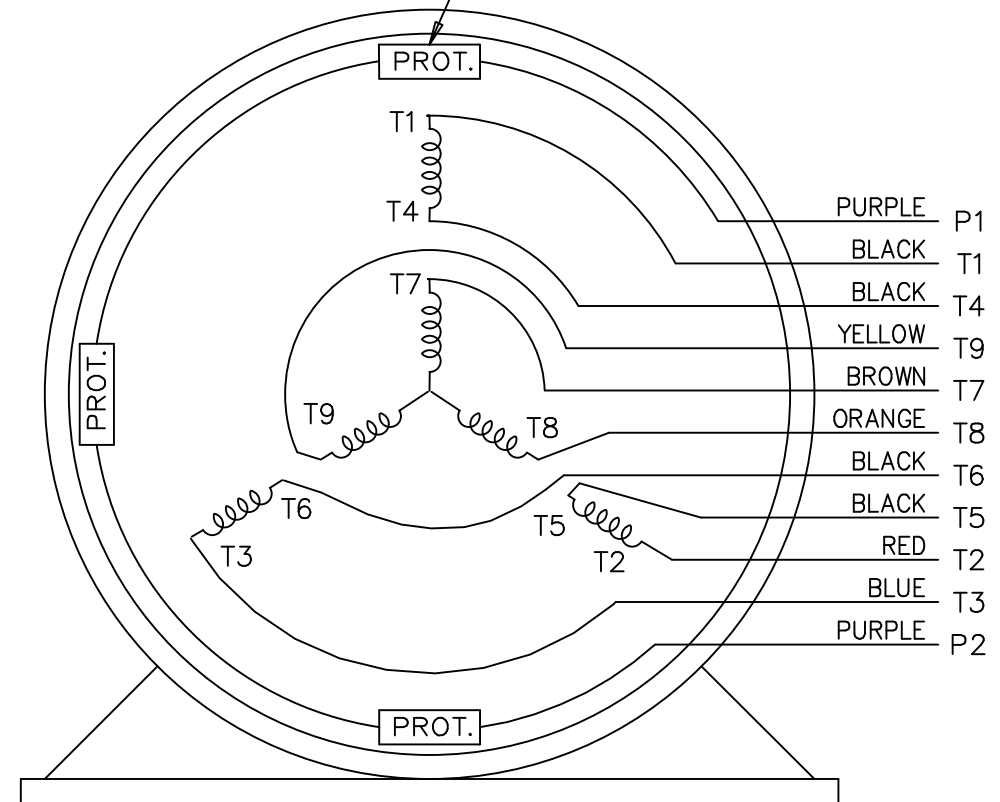
# LOW VOLTAGE




# THREE PHASE DUAL VOLTAGE MOTOR

EE7308T-LN

THREMO-PROTECTORS  
CONNECTED IN SERIES.



VIEW OF TERMINAL END

				TOLERANCES UNLESS SPECIFIED			DRAWN BJK 07-16-2002					
				DEC.	INCHES		CHK	DRS	07-18-2002			
				.X	±.1		APPD	GK	07-18-2002			
				.XX	±.02		SCALE 1=1					
2	ADDED COLORS TO "T & P" LEADS	CN 40494	MSG 08-08-2006	ML	.XXX	±.005	TITLE CONNECTION DIAGRAM 3 PHASE – DUAL VOLTAGE MOTOR				REF	
1	NEW DRAWING		BJK 07-18-2002	DRS	.XXXX	±.0005	MAT'L.				FMF	
NO.	REVISION		BY & DATE	CHK	ANG	±7'30"	FINISH				PREV	
THIS DRAWING IN DESIGN AND DETAIL IS OUR PROPERTY AND MUST NOT BE USED EXCEPT IN CONNECTION WITH OUR WORK ALL RIGHTS OF DESIGN AND INVENTION ARE RESERVED THIS IS AN ELECTRONICALLY GENERATED DOCUMENT – DO NOT SCALE THIS PRINT				RFP		CAD FILE ee7308t_ln			SIZE A	DRAWING NO. PAGE OF		REV. 2
				DIST LB						EE7308T-LN		

## Data Sheet

Date: 2/1/2018

LM21199



Data @ 460 V

## Motor Load Data

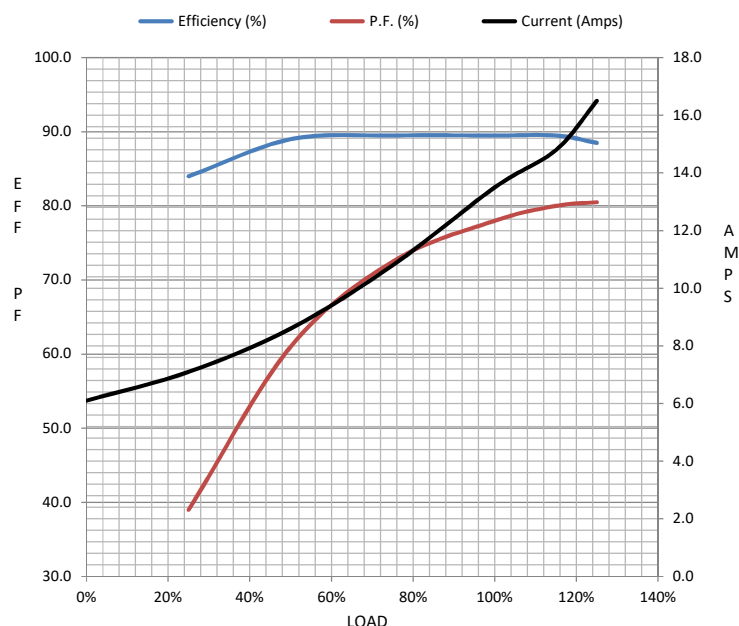
Load	0%	25%	50%	75%	100%	115%	125%	LR	
Current (Amps)	6.1	7.1	8.6	10.8	13.5	14.8	16.5	81.0	
Torque (ft-lb)	0.00	7.4	14.8	22.5	30.0	34.5	37.5	67.0	
RPM	1800	1775	1765	1755	1745	1,740	1735	0	
Efficiency (%)		84.0	89.0	89.5	89.5	89.5	88.5		
P.F. (%)	5.9	39.0	61.0	72.5	78.0	80.0	80.5	45.0	

## Motor Speed Data

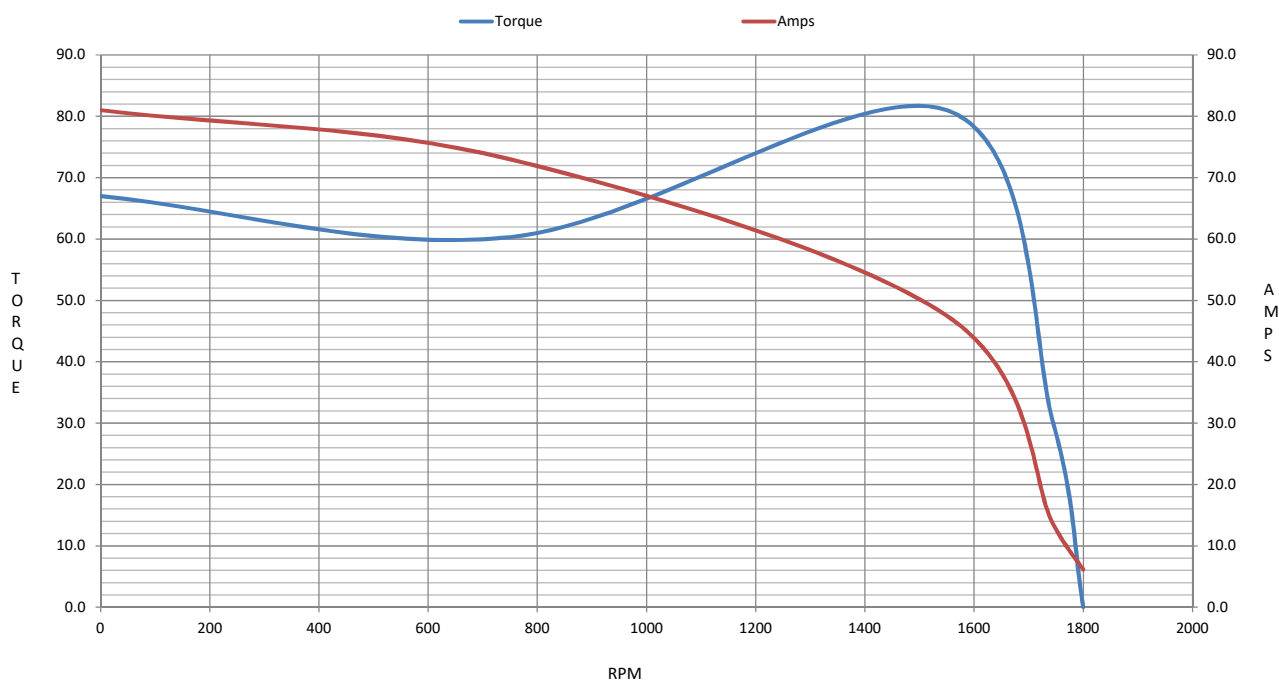
	LR	Pull-Up	BD	Rated	Idle
Speed (RPM)	0	750	1550	1745	1800
Current (Amps)	81.0	73.0	47.5	13.5	6.1
Torque (ft-lb)	67.0	60.3	81.0	30.0	0.00

## Information Block

HP	10.0			
Sync. RPM	1800			
Frame	215			
Enclosure	TEFC			
Construction	TFL			
Voltage	230/460 V			
Frequency	60 Hz			
Design	B			
LR Code letter	G			
Service Factor	1.15			
Temp Rise @ FL	70 °C			
Duty	CONT			
Ambient	40 °C			
Elevation	1,000 feet			
Rotor/Shaft wk²	0.80 Lb-Ft²			
Ref Wdg	K2154452 NONE			
Sound Pressure @ 1M	62 dBA			
VFD Rating	CONSTANT 4:1			
Outline Dwg	B-SS330100LN-950			
Conn. Diag	A-EE7308T-LN			
Additional Specifications:				
0				
0				
EQUIV CKT (OHMS / PHASE)				
R1	R2	X1	X2	Xm
0.8520	0.5680	2.5560	3.4080	45.4400



## Speed - Torque Curve



## EC Declaration of Conformity

The undersigned representing  
the manufacturer:

Regal Beloit America  
100 East Randolph St.  
Wausau, WI 54401

and the authorized representative  
established within the Community:

Marathon Electric UK  
6F Thistleton Road Ind. Estate  
Market Overton  
Oakham, Rutland LE15 7PP UK

are committed to providing customers with products that comply with applicable regulations and international protocols to which they are subject, including the requirements of the European Parliament Directive on the Harmonization of the laws relating to electrical equipment designed for use within certain voltage limits (2014/35/EU).

Regal Beloit America declares that the following product(s), to which this declaration relates, are in conformity with the relevant sections of the EC standards listed below.

This statement supersedes any statements previously issued pertaining to the product(s) listed below and is subject to change without notice.

Model No : LM21199

(Model No. may contain prefix and/or suffix characters)

Catalog No : LM21199

Rework No : N/A

Directives :

Low Voltage Directive 2014/35/EU

Harmonized Standards Used :

EN 60034-1: 2010 (IEC 60034-1: 2010)


EN 60034-5: 2001/A1:2007 (IEC 60034-5: 2000/A1:2006)

Authorized Representative:



Michael A. Logsdon  
Vice President, Technology

Authorized Representative in the Community:



Julian Clark  
Marketing Engineer

Created on 09/01/2022

**CE 22**