

PRODUCT INFORMATION PACKET

Model No: LM21124

Catalog No: LM21124

Speed Ratio Motors, Drip Proof, 75 HP, 3 Ph, 60 Hz, 230/460 V, 1782 RPM, 365T Frame



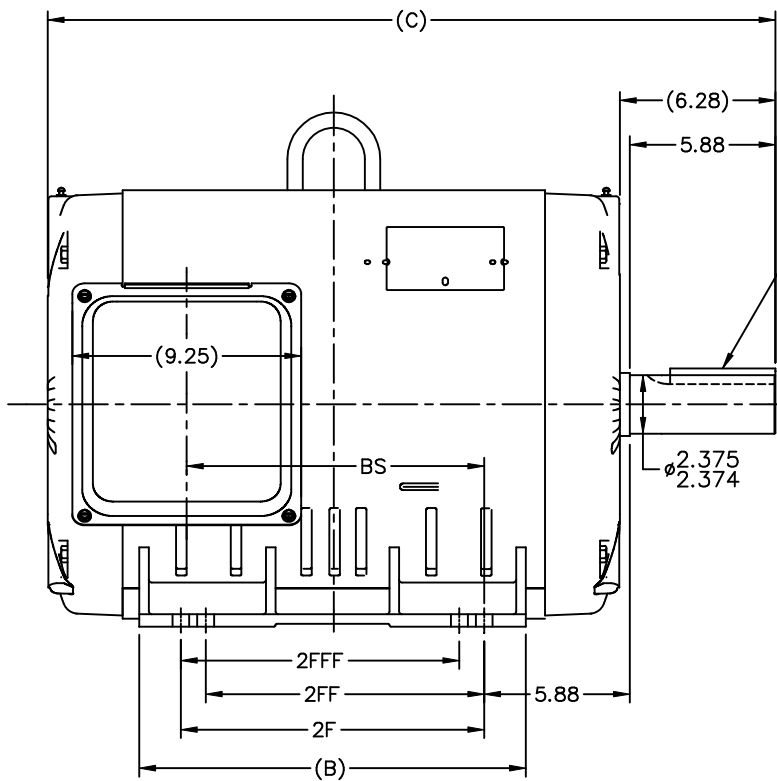
Regal and are trademarks of Regal Rexnord Corporation or one of its affiliated companies.
©2022 Regal Rexnord Corporation, All Rights Reserved. MC017097E

Nameplate Specifications

Output HP	75 Hp	Output KW	56.0 kW
Frequency	60 Hz	Voltage	230/460 V
Current	176.0/88.0 A	Speed	1782 rpm
Service Factor	1	Phase	3
Efficiency	95 %	Power Factor	84
Duty	Continuous	Insulation Class	F
Design Code	B	KVA Code	G
Frame	365T	Enclosure	Drip Proof
Thermal Protection	No Protection	Ambient Temperature	40 °C
Drive End Bearing Size	6313	Opp Drive End Bearing Size	6311
UL	Recognized	CSA	Y
CE	Y	IP Code	22
Number of Speeds	1		

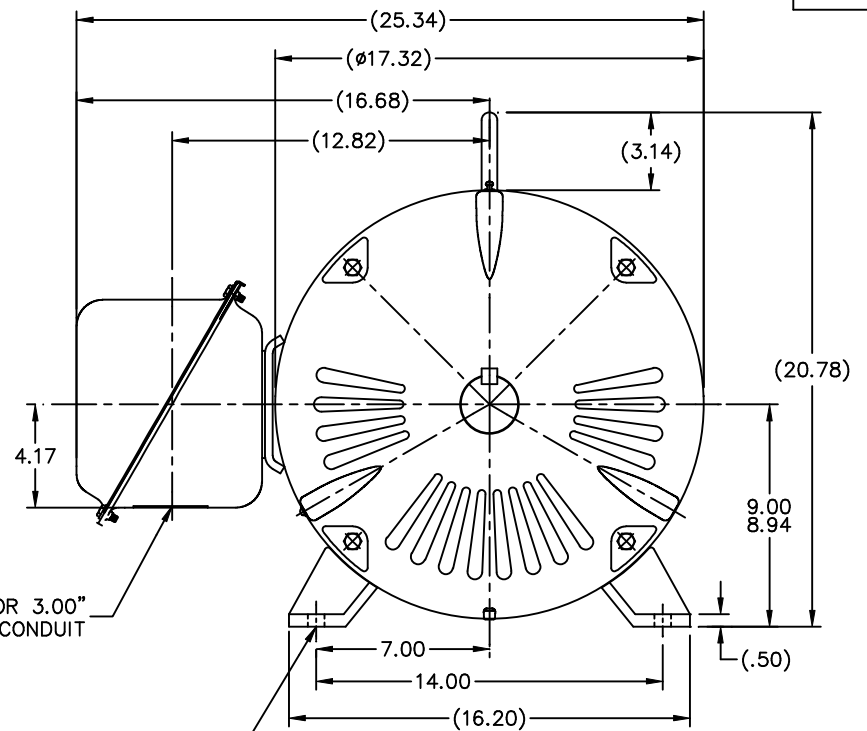
Technical Specifications

Electrical Type	Squirrel Cage Inverter Rated	Starting Method	Wye Start Delta Run Or Inverter
Poles	4	Rotation	Reversible
Resistance Main	.067 Ohms	Mounting	Rigid Base
Motor Orientation	Horizontal	Drive End Bearing	Ball
Opp Drive End Bearing	Ball	Frame Material	Rolled Steel
Shaft Type	T	Overall Length	32.90 in
Frame Length	17.70 in	Shaft Diameter	2.375 in
Shaft Extension	5.88 in	Assembly/Box Mounting	F1 Only
Connection Drawing	A-EE7308BZ-LN	Outline Drawing	XH2D1SS1-1648



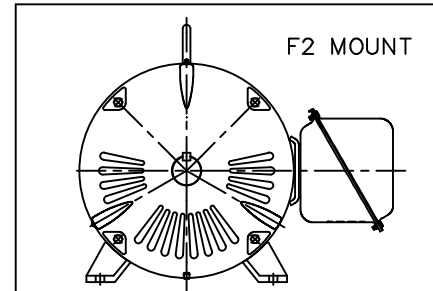
.62x.62x4.25 KEY

2.375
2.374



HOLE FOR 3.00" CONDUIT

Ø.68 DRILL THRU
364 - 2 HOLES EACH SIDE
365 - 4 HOLES EACH SIDE

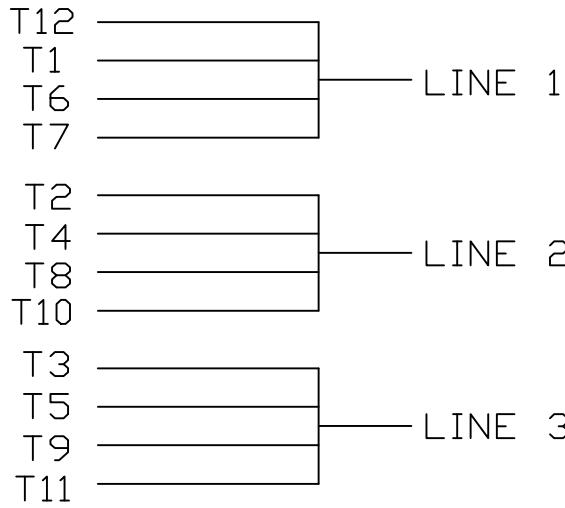


NOTES:
1. NAMEPLATES TO BE READ FROM CONDUIT BOX SIDE OF MOTOR.

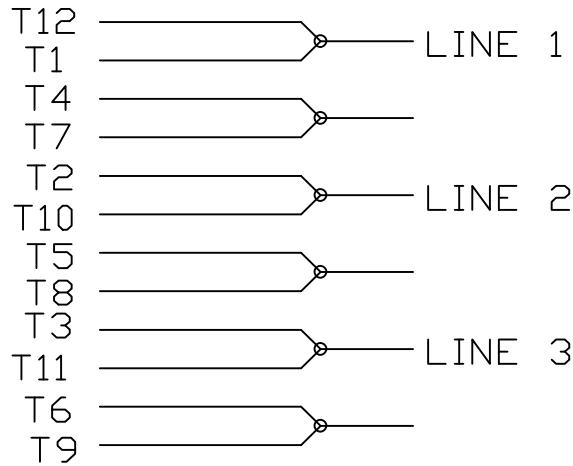
DASH	FRAME	C	B	2F	2FF	2FFF	BS
1548	364T	28.40	14.61	11.25	11.25	11.25	11.02
1648	365T	29.40	15.61	12.25	11.25	11.25	12.02

		TOLERANCES UNLESS SPECIFIED		Lincoln MOTOR		DRAWN TJB 08-07-2001	
		DEC.	INCHES			CHK	DRS 09-04-2001
		.X	±.1			APPD	HNH 09-04-2001
2	ADDED DASH 1548, REVISED PART NAME; U.E.I. WAS U.E. CN34267	.XX	±.03	TITLE OUTLINE NEMA MOTORS 360T FRAME OPD UEI		SCALE	1=5
1	NEW DRAWING MU37565	.XXX	±.005			REF	
NO.	REVISION	BY & DATE	CHK	ANG	FINISH	FMF	PREV
THIS DRAWING IN DESIGN AND DETAIL IS OUR PROPERTY AND MUST NOT BE USED EXCEPT IN CONNECTION WITH OUR WORK ALL RIGHTS OF DESIGN AND INVENTION ARE RESERVED THIS IS AN ELECTRONICALLY GENERATED DOCUMENT - DO NOT SCALE THIS PRINT		RFP 09-04-2001	±7'30"	CAD FILE xh2d1ss1		SIZE	DRAWING NO. PAGE 1 OF 1 REV.
		DIST BY				B	XH2D1SS1 2

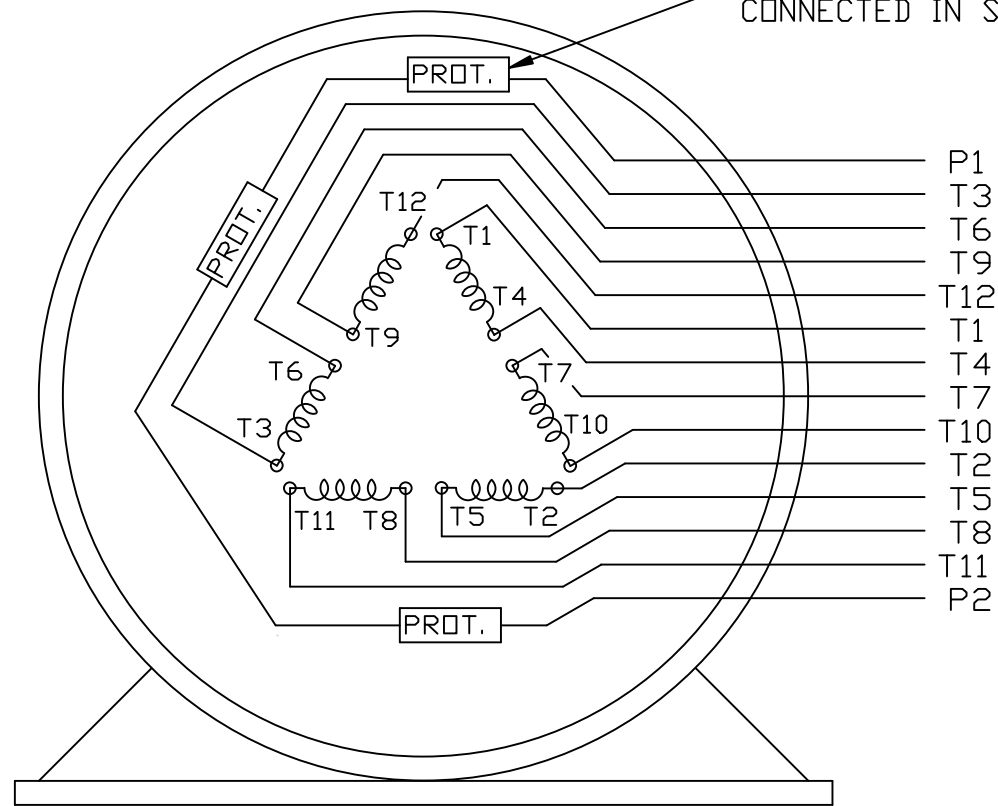
LOW VOLTAGE



HIGH VOLTAGE



THERMO - PROTECTORS
CONNECTED IN SERIES.



VIEW OF TERMINAL END

					UNLESS OTHERWISE SPECIFIED DIMENSIONS ARE IN INCHES TOL. ON XX± XXX± XXXX± ANGLES±			
2	08/17/2011	REMOVED NOTE '12 LEADS SINGLE VOLTAGE'	MU103768		RFH	MAX. SURFACE ROUGHNESS UNLESS OTHERWISE NOTED		DRAWN BY KL 12-11-2000
1	12-11-2000	NEW DRAWING	MU34925		KL	FINISH		CHKD BY DJK 12-11-2000
REV	DATE	CHANGE	NAME		PART NAME	EXTERNAL CONNECTION DIAGRAM 3 PHASE - 2/1 DELTA - 12 LEADS		DRWG NO A- EE7308BZ-LN
					PURCHASED	CADD FILE NO.	EE7308BZ-LN	



CERTIFICATION DATA SHEET

2100 WASHINGTON ST.
GRAFTON, WI
PH. 262-277-8810

CONN. DIAGRAM: A-EE7308BZ-LN

OUTLINE: XH2F1SS1-1770

CATALOG #: LM21124

WINDING #: L3654030 1

MOUNTING: F1 ONLY

TYPICAL MOTOR PERFORMANCE DATA

HP	kW	SYNC. RPM	F.L. RPM	FRAME	ENCLOSURE	KVA CODE	DESIGN
75	56.0	1800	1782	365T	DP	G	B

PH	Hz	VOLTS	AMPS	START TYPE	DUTY	INSL	S.F.	AMB°C
3	60	230/460	176/88	Y START D RUN OR INV	CONTINUOUS	F1	1.0	40

FULL LOAD EFF:	95	3/4 LOAD EFF:	95	1/2 LOAD EFF:	94.5	GTD. EFF	ELEC. TYPE
FULL LOAD PF:	84	3/4 LOAD PF:	81	1/2 LOAD PF:	73.5	94.1	SQ CAGE INV RATED

F.L. TORQUE	LOCKED ROTOR AMPS	L.R. TORQUE	B.D. TORQUE	F.L. RISE°C
221 LB-FT	1084 / 542	495 LB-FT 224 %	500 LB-FT 226 %	45

SOUND PRESSURE @ 3 FT.	SOUND POWER	ROTOR WK^2	MAX. WK^2	SAFE STALL TIME	STARTS / HOUR	APPROX. MOTOR WGT
76 dBA	86 dBA	0 LB-FT^2	- LB-FT^2	- SEC.	-	- LBS.

*** SUPPLEMENTAL INFORMATION ***

DE BRACKET TYPE	ODE BRACKET TYPE	MOUNT TYPE	ORIENTATION	SEVERE DUTY	HAZARDOUS LOCATION	DRIP COVER	SCREENS	PAINT
STANDARD	STANDARD	RIGID	HORIZONTAL	FALSE	NONE	FALSE	NONE	GRAY - LINCOLN

BEARINGS		GREASE	SHAFT TYPE	SPECIAL DE	SPECIAL ODE	SHAFT MATERIAL	FRAME MATERIAL
DE	ODE						
BALL	BALL	POLYREX EM	T	NONE	NONE	1045 HOT ROLLED (C-204)	ROLLED STEEL
6313	6311						

THERMO-PROTECTORS				THERMISTORS	CONTROL	SPACE HEATERS
THERMOSTATS	PROTECTORS	WDG RTDs	BRG RTDs			
TSTATS (N/C)	NOT	NONE	NONE	NONE	FALSE	NONE VOLTS

*
N
O
T
E
S
*

INVERTER TORQUE: VARIABLE 10:1
INV. HP SPEED RANGE: NONE
ENCODER: NONE NONE NONE NONE NONE PPR
BRAKE: NONE NONE NONE P/N NONE NONE NONE FT-LB NONE V NONE Hz

Data Sheet

Date: 1/18/2018

LM21124



Data @ **460 V**

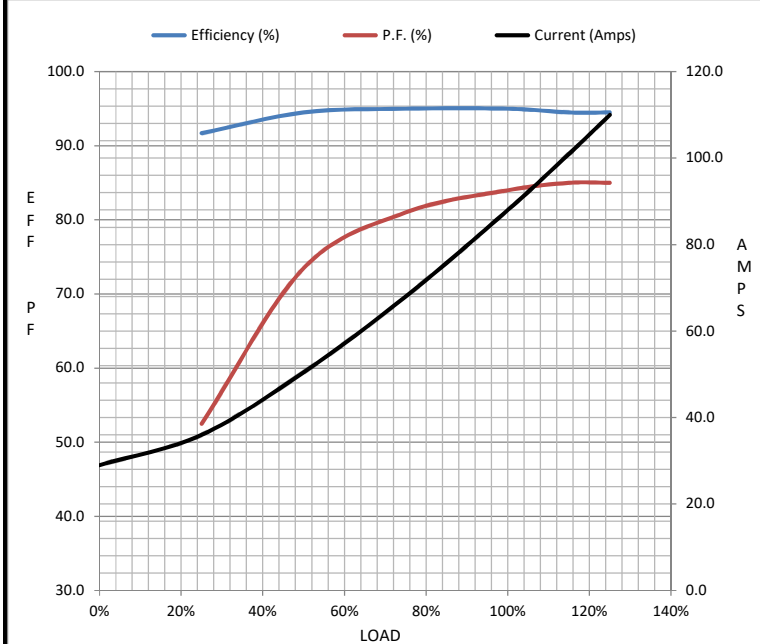
Motor Load Data

Load	0%	25%	50%	75%	100%	115%	125%	LR
Current (Amps)	29.0	36.0	50.5	68.0	88.0	101	110	542
Torque (ft-lb)	0.00	55.0	110	165	221	255	277	495
RPM	1800	1795	1790	1785	1782	1.778	1.775	0
Efficiency (%)		91.7	94.5	95.0	95.0	94.5	94.5	
P.F. (%)	3.5	52.5	73.5	81.0	84.0	85.0	85.0	36.0

Motor Speed Data

	LR	Pull-Up	BD	Rated	Idle
Speed (RPM)	0	900	1725	1782	1800
Current (Amps)	542	488	292	88.0	29.0
Torque (ft-lb)	495	420	500	221	0.00

Information Block				
HP	75.0			
Sync. RPM	1800			
Frame	365			
Enclosure	DP			
Construction	TDR			
Voltage	230/460 V			
Frequency	60 Hz			
Design	B			
LR Code letter	G			
Service Factor	1.15			
Temp Rise @ FL	45 °C			
Duty	CONT			
Ambient	40 °C			
Elevation	1,000 feet			
Rotor/Shaft wk ²	0.00 Lb-Ft ²			
Ref Wdg	L3654030 NONE			
Sound Pressure @ 1M	76 dBA			
VFD Rating	VARIABLE 10:1			
Outline Dwg	XH2F1SS1-1770			
Conn. Diag	A-EE7308BZ-LN			
Additional Specifications:				
0				
0				
EQUIV CKT (OHMS / PHASE)				
R1	R2	X1	X2	Xm
0.0450	0.0300	0.3210	0.4610	9.1850



Speed - Torque Curve

