

PRODUCT INFORMATION PACKET

Model No: LM21121

Catalog No: LM21121

Speed Ratio Motors, Drip Proof, 60 HP, 3 Ph, 60 Hz, 230/460 V, 1785 RPM, 364T Frame



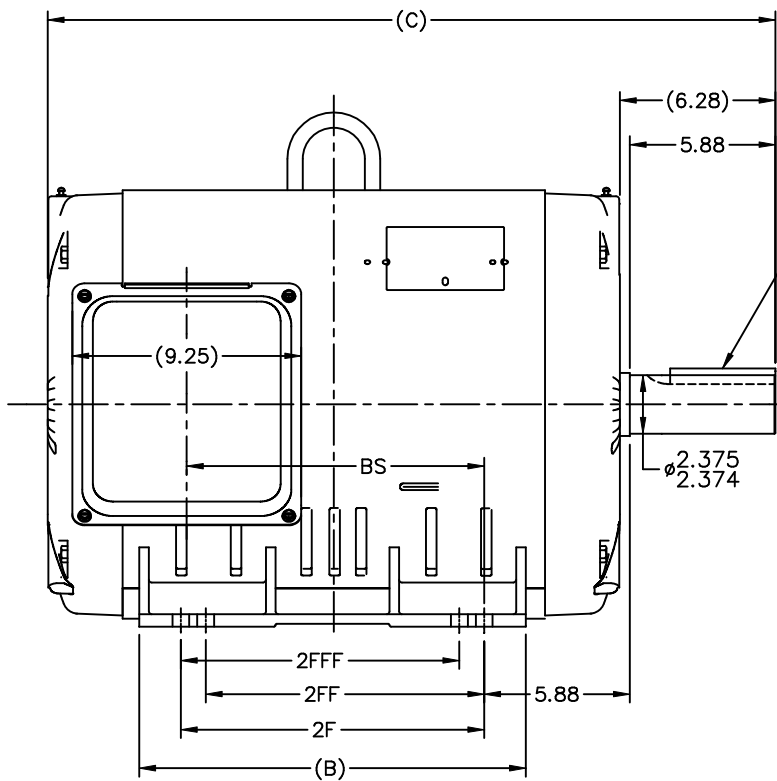
Regal and are trademarks of Regal Rexnord Corporation or one of its affiliated companies.
©2022 Regal Rexnord Corporation, All Rights Reserved. MC017097E

Nameplate Specifications

Output HP	60 Hp	Output KW	44.8 kW
Frequency	60 Hz	Voltage	230/460 V
Current	145.0/72.5 A	Speed	1785 rpm
Service Factor	1	Phase	3
Efficiency	93.6 %	Power Factor	82
Duty	Continuous	Insulation Class	F
Design Code	B	KVA Code	G
Frame	364T	Enclosure	Drip Proof
Thermal Protection	No Protection	Ambient Temperature	40 °C
Drive End Bearing Size	313	Opp Drive End Bearing Size	311
UL	Recognized	CSA	Y
CE	Y	IP Code	22
Number of Speeds	1		

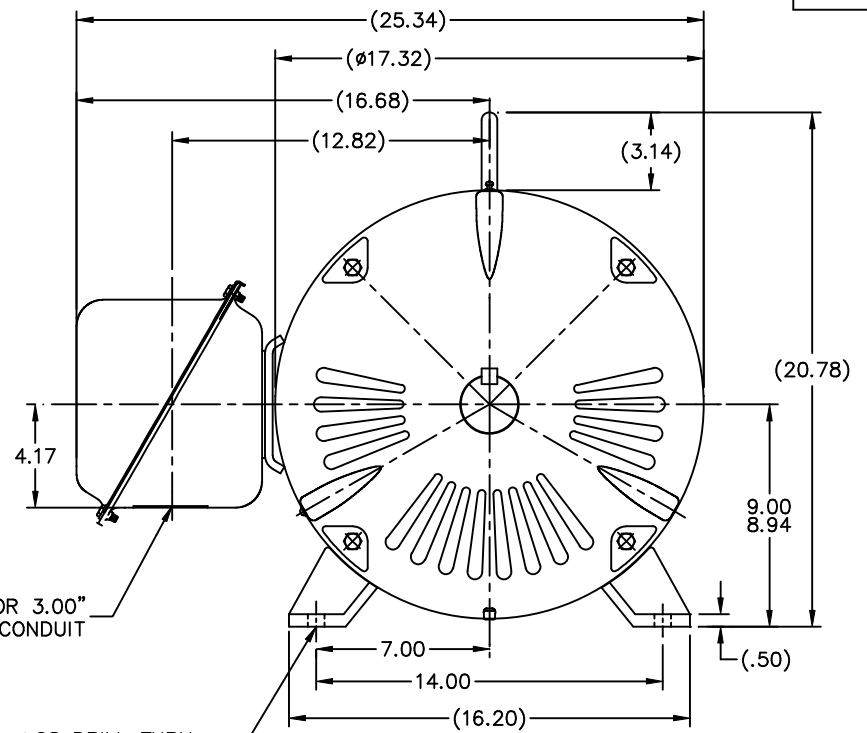
Technical Specifications

Electrical Type	Squirrel Cage Inverter Rated	Starting Method	Wye Start Delta Run Or Inverter
Poles	4	Rotation	Reversible
Resistance Main	.106 Ohms	Mounting	Rigid Base
Motor Orientation	Horizontal	Drive End Bearing	Ball
Opp Drive End Bearing	Ball	Frame Material	Rolled Steel
Shaft Type	T	Overall Length	28.40 in
Frame Length	15.48 in	Shaft Diameter	2.375 in
Shaft Extension	5.88 in	Assembly/Box Mounting	F1 Only
Connection Drawing	A-EE7308AA-LN	Outline Drawing	XH2D1SS1-1548



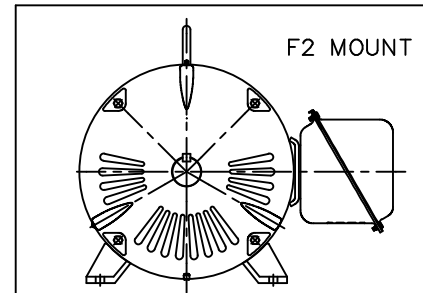
.62x.62x4.25
KEY

2.375
2.374



HOLE FOR 3.00"
CONDUIT

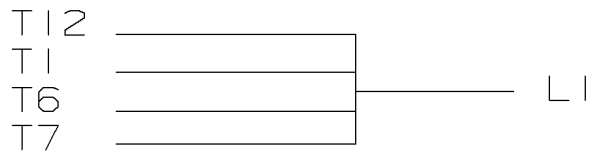
Ø.68 DRILL THRU
364 - 2 HOLES EACH SIDE
365 - 4 HOLES EACH SIDE



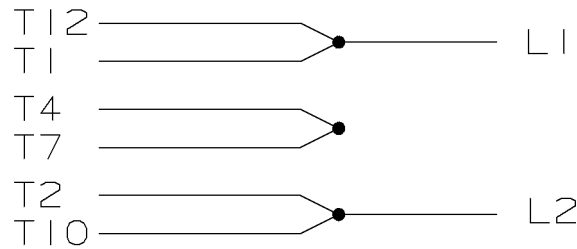
NOTES:
1. NAMEPLATES TO BE READ FROM CONDUIT BOX
SIDE OF MOTOR.

DASH	FRAME	C	B	2F	2FF	2FFF	BS
1548	364T	28.40	14.61	11.25	11.25	11.25	11.02
1648	365T	29.40	15.61	12.25	11.25	11.25	12.02

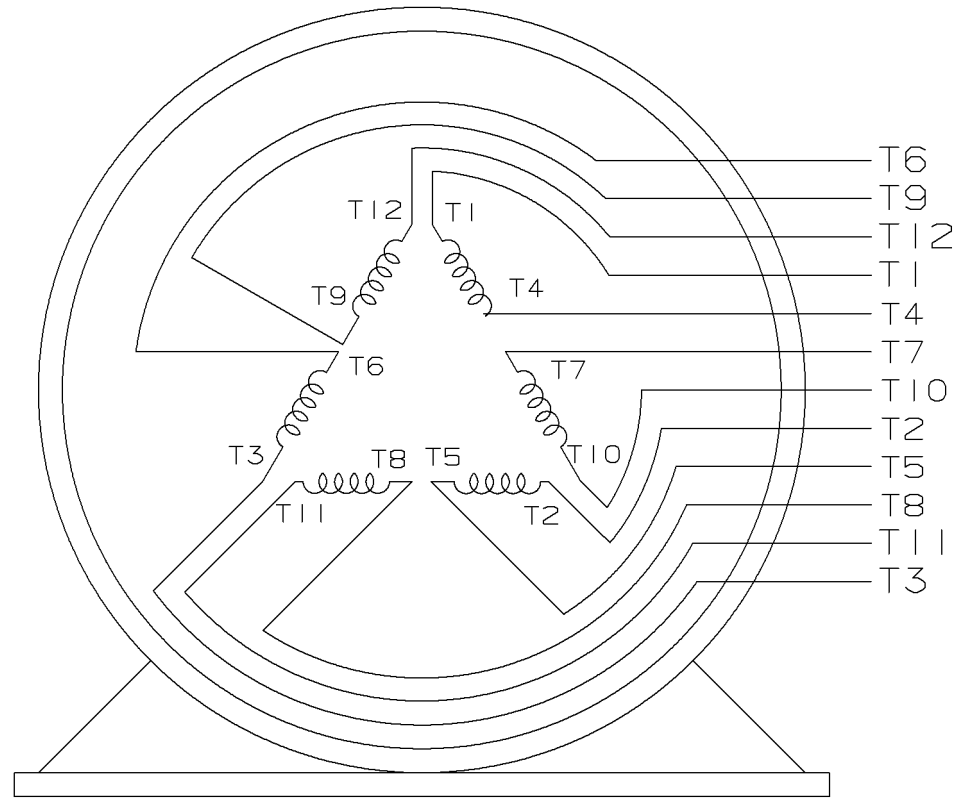
		TOLERANCES UNLESS SPECIFIED		Lincoln ROTOR		DRAWN TJB 08-07-2001	
		DEC.	INCHES	CHK	DRS	09-04-2001	
		.X	±.1	APPD		HNH 09-04-2001	
2	ADDED DASH 1548, REVISED PART NAME; U.E.I. WAS U.E. CN34267	.XX	±.03	TITLE		OUTLINE NEMA MOTORS	
		.XXX	±.005	360T FRAME OPD UEI		SCALE 1=5	
1	NEW DRAWING MU37565	.XXXX	±.0005	MAT'L		REF	
NO.	REVISION	BY & DATE	CHK	ANG	FINISH	FMF	
				RFP	09-04-2001	CAD FILE	xh2d1ss1
		THIS DRAWING IN DESIGN AND DETAIL IS OUR PROPERTY AND MUST NOT BE USED EXCEPT IN CONNECTION WITH OUR WORK ALL RIGHTS OF DESIGN AND INVENTION ARE RESERVED THIS IS AN ELECTRONICALLY GENERATED DOCUMENT - DO NOT SCALE THIS PRINT		DIST	BY	SIZE	DRAWING NO. XH2D1SS1
						PAGE	1 OF 1
						REV.	2



LOW VOLTAGE



HIGH VOLTAGE



VIEW OF TERMINAL END

					UNLESS OTHERWISE SPECIFIED DIMENSIONS ARE IN INCHES TOL. ON XX±.02 XXX±.005 XXXX±.0005 ANGLES± 7'30"		
2	08-09-1999	RE-ISSUE, ADDED '-' TO PART NUMBER	BLR		MAX. SURFACE ROUGHNESS UNLESS OTHERWISE NOTED		DRAWN BY TRB 07-16-1999
1	06-18-1999	NEW DRAWING	TRB	FINISH		CHKD BY ML 06-18-1999	
				MATERIAL		APPD BY GK 06-18-1999	
REV	DATE	CHANGE	NAME	PART NAME 3 PHASE CONNECTION DIAGRAM 2/1 DELTA - 12 LEADS			DRWG NO A- EE7308AA-LN

PURCHASED

CADD FILE NO.

EE7308AALN

ERROR: undefined
OFFENDING COMMAND: Pscrip

STACK:



CERTIFICATION DATA SHEET

2100 WASHINGTON ST.
GRAFTON, WI
PH. 262-277-8810

CONN. DIAGRAM: A-EE7308AA-LN

CATALOG #: LM21121

OUTLINE: XH2D1SS1-1548

WINDING #: C3644009 R3 1

MOUNTING: F1 ONLY

TYPICAL MOTOR PERFORMANCE DATA

HP	kW	SYNC. RPM	F.L. RPM	FRAME	ENCLOSURE	KVA CODE	DESIGN
60	44.8	1800	1785	364T	DP	G	B

PH	Hz	VOLTS	AMPS	START TYPE	DUTY	INSL	S.F.	AMB°C
3	60	230/460	145/72.5	Y START D RUN OR INV	CONTINUOUS	F4	1.0	40

FULL LOAD EFF:	93.6	3/4 LOAD EFF:	94.1	1/2 LOAD EFF:	93	GTD. EFF		ELEC. TYPE	
FULL LOAD PF:	82	3/4 LOAD PF:	77	1/2 LOAD PF:	68	92.4		SQ CAGE INV RATED	

F.L. TORQUE	LOCKED ROTOR AMPS	L.R. TORQUE	B.D. TORQUE	F.L. RISE°C
177 LB-FT	870 / 435	325 LB-FT 184 %	450 LB-FT 254 %	40

SOUND PRESSURE @ 3 FT.	SOUND POWER	ROTOR WK^2	MAX. WK^2	SAFE STALL TIME	STARTS / HOUR	APPROX. MOTOR WGT
76 dBA	86 dBA	0 LB-FT^2	- LB-FT^2	- SEC.	-	- LBS.

*** SUPPLEMENTAL INFORMATION ***

DE BRACKET TYPE	ODE BRACKET TYPE	MOUNT TYPE	ORIENTATION	SEVERE DUTY	HAZARDOUS LOCATION	DRIP COVER	SCREENS	PAINT
STANDARD	STANDARD	RIGID	HORIZONTAL	FALSE	NONE	FALSE	NONE	GRAY - LINCOLN

BEARINGS		GREASE	SHAFT TYPE	SPECIAL DE	SPECIAL ODE	SHAFT MATERIAL	FRAME MATERIAL
DE	ODE						
BALL	BALL	POLYREX EM	T	NONE	NONE	1045 HOT ROLLED (C-204)	ROLLED STEEL
313	311						

THERMO-PROTECTORS				THERMISTORS	CONTROL	SPACE HEATERS
THERMOSTATS	PROTECTORS	WDG RTDs	BRG RTDs			
TSTATS (N/C)	NOT	NONE	NONE	NONE	FALSE	NONE VOLTS

*
N
O
T
E
S
*

INVERTER TORQUE: CONSTANT 2:1
INV. HP SPEED RANGE: 1.5 X BASE SPEED
ENCODER: NONE NONE NONE NONE NONE PPR
BRAKE: NONE NONE NONE P/N NONE NONE NONE FT-LB V NONE Hz

Data Sheet

Date: 1/19/2018

LM21121



Data @ 460 V

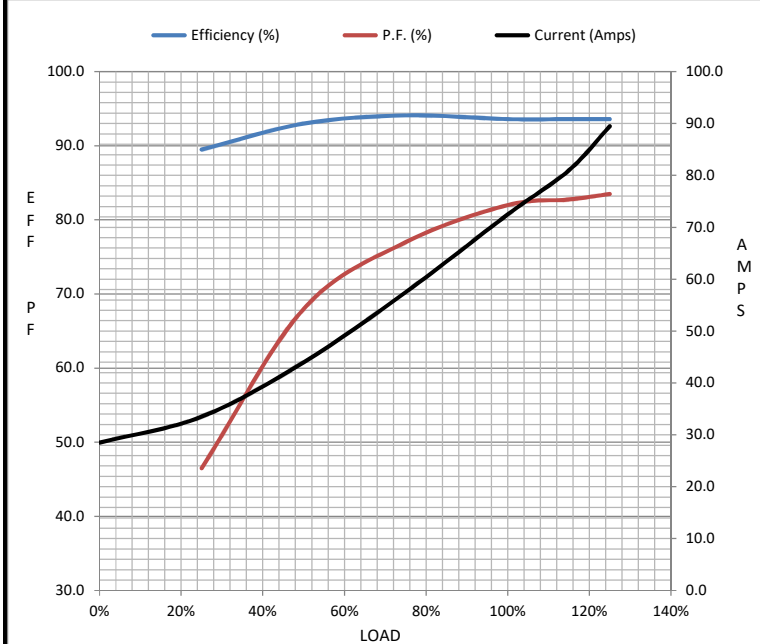
Motor Load Data

Load	0%	25%	50%	75%	100%	115%	125%	LR
Current (Amps)	28.5	33.5	44.0	57.5	72.5	81.0	89.5	435
Torque (ft-lb)	0.00	44.0	88.0	132	177	199	221	325
RPM	1800	1795	1792	1788	1785	1783	1780	0
Efficiency (%)		89.5	93.0	94.1	93.6	93.6	93.6	
P.F. (%)	5.0	46.5	68.0	77.0	82.0	82.8	83.5	34.0

Motor Speed Data

	LR	Pull-Up	BD	Rated	Idle
Speed (RPM)	0	900	1700	1785	1800
Current (Amps)	435	390	280	72.5	28.5
Torque (ft-lb)	325	290	450	177	0.00

Information Block				
HP	60.0			
Sync. RPM	1800			
Frame	364			
Enclosure	DP			
Construction	TDR			
Voltage	230/460 V			
Frequency	60 Hz			
Design	B			
LR Code letter	G			
Service Factor	1.15			
Temp Rise @ FL	40 °C			
Duty	CONT			
Ambient	40 °C			
Elevation	1,000 feet			
Rotor/Shaft wk ²	0.00 Lb-Ft ²			
Ref Wdg	C3644009 R3			
Sound Pressure @ 1M	76 dBA			
VFD Rating	CONSTANT 2:1			
Outline Dwg	XH2D1SS1-1548			
Conn. Diag	A-EE7308AA-LN			
Additional Specifications:				
0				
0				
EQUIV CKT (OHMS / PHASE)				
R1	R2	X1	X2	Xm
0.0710	0.0330	0.3640	0.5160	9.2240



Speed - Torque Curve

