

PRODUCT INFORMATION PACKET



Model No: LM21089

Catalog No: LM21089

OBSOLETE - NO REPLACEMENT FOR 25,3600,TEFC,324U,3/60/460

Regal and Leeson are trademarks of Regal Rexnord Corporation or one of its affiliated companies.

©2023 Regal Rexnord Corporation, All Rights Reserved. MC017097E





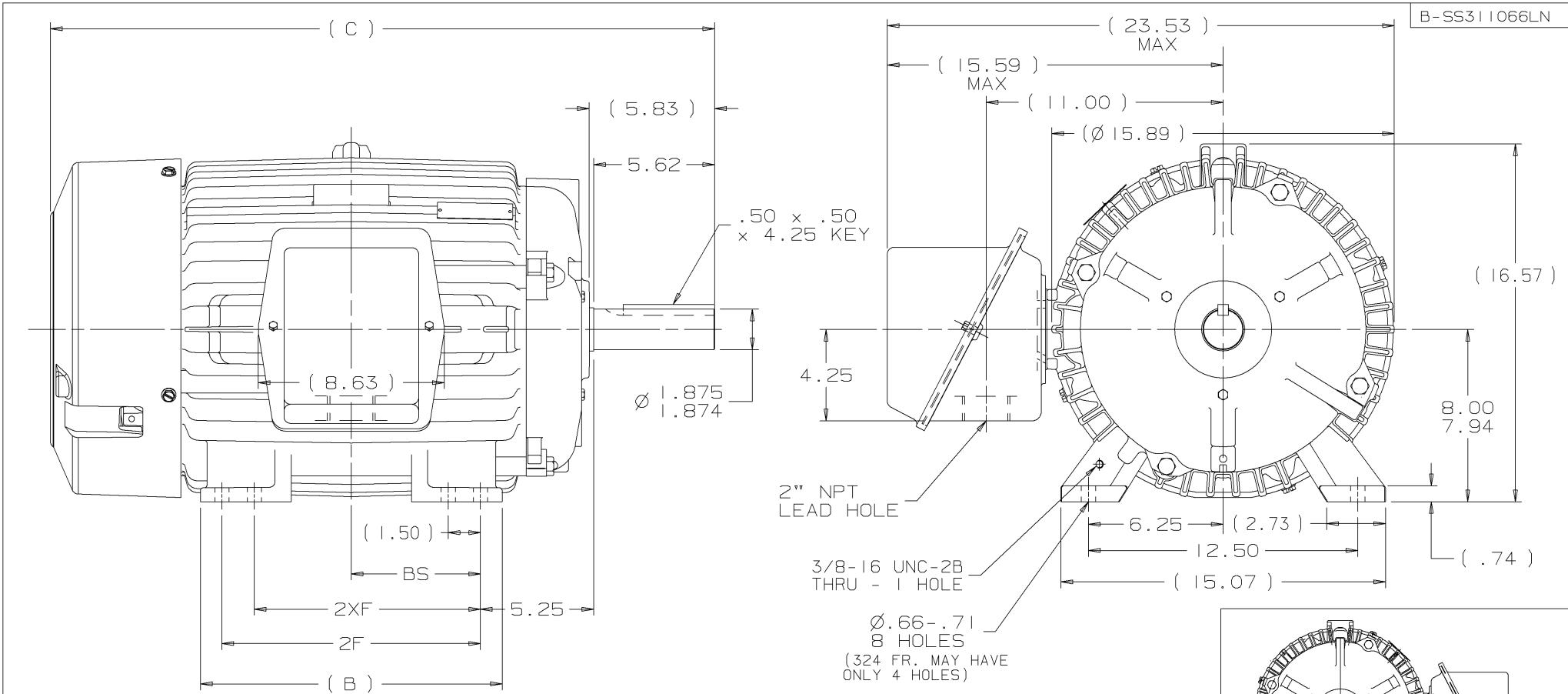
Nameplate Specifications

Phase	3	Output HP	25 Hp
Output KW	18.7 kW	Voltage	460 V
Speed	3555 rpm	Service Factor	1
Frame	324U	Enclosure	Totally Enclosed Fan Cooled
Thermal Protection	No Protection	Efficiency	93.6 %
Ambient Temperature	65 °C	Frequency	60 Hz
Current	28.1 A	Power Factor	89
Duty	Continuous	Insulation Class	F
Design Code	B	KVA Code	G
Drive End Bearing Size	312	Opp Drive End Bearing Size	311
UL	Recognized	CSA	Y
CE	Y	IP Code	43
Number of Speeds	1		

Technical Specifications

Electrical Type	Squirrel Cage Induction Run	Starting Method	Across The Line
Poles	2	Rotation	Reversible
Resistance Main	.356 Ohms	Mounting	Rigid Base
Motor Orientation	Horizontal	Drive End Bearing	Ball
Opp Drive End Bearing	Ball	Frame Material	Cast Iron
Shaft Type	U	Assembly/Box Mounting	F1/F2 CAPABLE
Outline Drawing	B-SS311066LN-1475	Connection Drawing	A-EE7300U-LN

This is an uncontrolled document once printed or downloaded and is subject to change without notice. Date Created:06/06/2023



NOTES

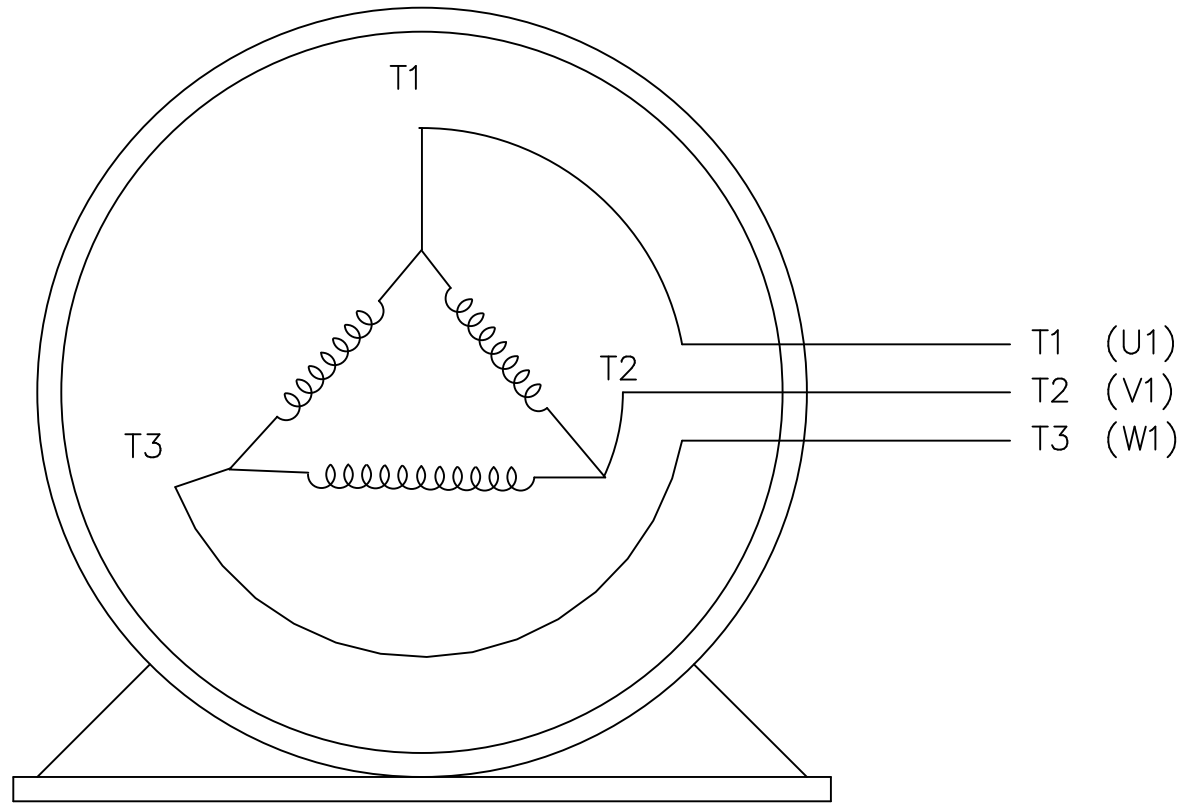
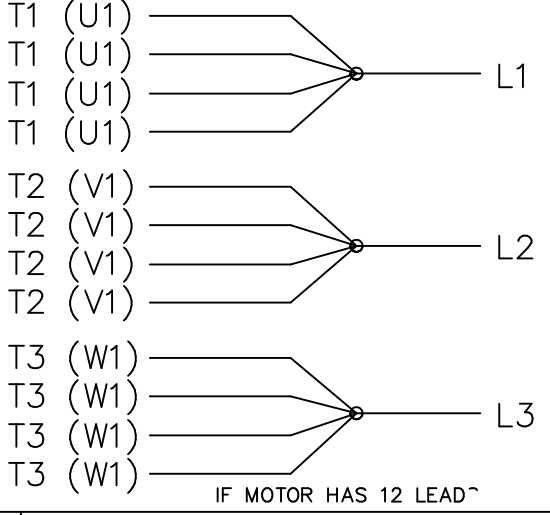
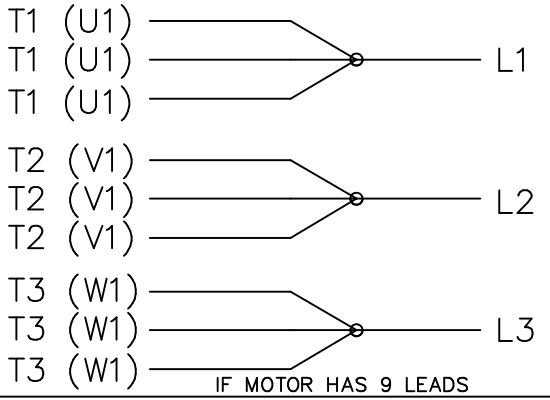
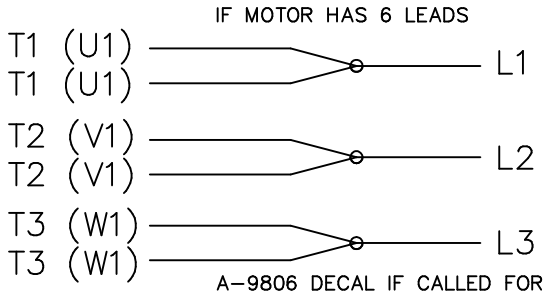
1. BOX CAN BE ROTATED IN 90° STEPS
2. BOX CAN BE MOUNTED ON OPPOSITE SIDE BY REMOVING BRACKETS AND TURNING FRAME 180°
3. NAMEPLATE TO BE READ FROM CONDUIT BOX SIDE OF MOTOR

DASH	FRAME	B	C	2F	2XF	BS	REV	DATE	CHANGE	NAME	LINE	DESCRIPTION	DATE	BY	CHKD	APPD	DATE	DESCRIPTION
1475	324U	14.00	29.34	10.50		5.25	2	03-06-2001	DASH 1475 (B) 14.00 WAS 12.50 CN 29200-1468	HLB								
1625	326U	14.00	30.84	12.00	10.50	6.00	1	10-24-2000	NEW DRAWING	DRS								
										PART NAME		OUTLINE - TFPA - CAST C'BOX 320U FR. - TEFC - STD - 12.50 LAM						DRWG NO
												PURCHASED						B-SS311066LN
												CADD FILE NO.						SS311066LN


ERROR: syntaxerror
OFFENDING COMMAND: --nostringval--

STACK:

/im
-savelevel-



VIEW OF TERMINAL END

				TOLERANCES UNLESS SPECIFIED			DRAWN KL 12-06-2000						
				DEC.	INCHES		CHK DJK 12-06-2000						
				.X	±.1		APPD DJK 12-06-2000						
				.XX	±.02		SCALE						
2	ADDED TABLES	CN39272	RJW 06-03-2005	ML	.XXX ±.005	TITLE EXTERNAL CONNECTION DIAGRAM 3Ø SINGLE VOLTAGE DELTA			REF				
1	NEW DRAWING	MU34873	KL 12-06-2000		.XXXX ±.0005				MAT'L.			FMF	
NO.	REVISION		BY & DATE	CHK	ANG	±7'30"	FINISH			PREV			
THIS DRAWING IN DESIGN AND DETAIL IS OUR PROPERTY AND MUST NOT BE USED EXCEPT IN CONNECTION WITH OUR WORK ALL RIGHTS OF DESIGN AND INVENTION ARE RESERVED THIS IS AN ELECTRONICALLY GENERATED DOCUMENT – DO NOT SCALE THIS PRINT				RFP		CAD FILE EE7300U_LN		SIZE	DRAWING NO.		PAGE	OF	REV.
				DIST LE				A	EE7300U-LN				2

EC Declaration of Conformity

The undersigned representing
the manufacturer:

Regal Beloit America
100 East Randolph St.
Wausau, WI 54401

and the authorized representative
established within the Community:

Marathon Electric UK
6F Thistleton Road Ind. Estate
Market Overton
Oakham, Rutland LE15 7PP UK

are committed to providing customers with products that comply with applicable regulations and international protocols to which they are subject, including the requirements of the European Parliament Directive on the Harmonization of the laws relating to electrical equipment designed for use within certain voltage limits (2014/35/EU).

Regal Beloit America declares that the following product(s), to which this declaration relates, are in conformity with the relevant sections of the EC standards listed below.

This statement supersedes any statements previously issued pertaining to the product(s) listed below and is subject to change without notice.

Model No : LM21089

(Model No. may contain prefix and/or suffix characters)

Catalog No : LM21089

Rework No : N/A

Directives :

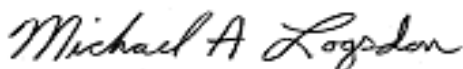
Low Voltage Directive 2014/35/EU

Harmonized Standards Used :

EN 60034-1: 2010 (IEC 60034-1: 2010)


EN 60034-5: 2001/A1:2007 (IEC 60034-5: 2000/A1:2006)

Authorized Representative:



Michael A. Logsdon
Vice President, Technology

Authorized Representative in the Community:



Julian Clark
Marketing Engineer

Created on 09/01/2022

CE 22