

# PRODUCT INFORMATION PACKET

Model No: LM21087

Catalog No: LM21087

Automotive Duty Motor, 10 HP, 3 Ph, 60 Hz, 460 V, 3600 RPM, 254U Frame, TEFC



Regal and are trademarks of Regal Rexnord Corporation or one of its affiliated companies.  
©2022 Regal Rexnord Corporation, All Rights Reserved. MC017097E

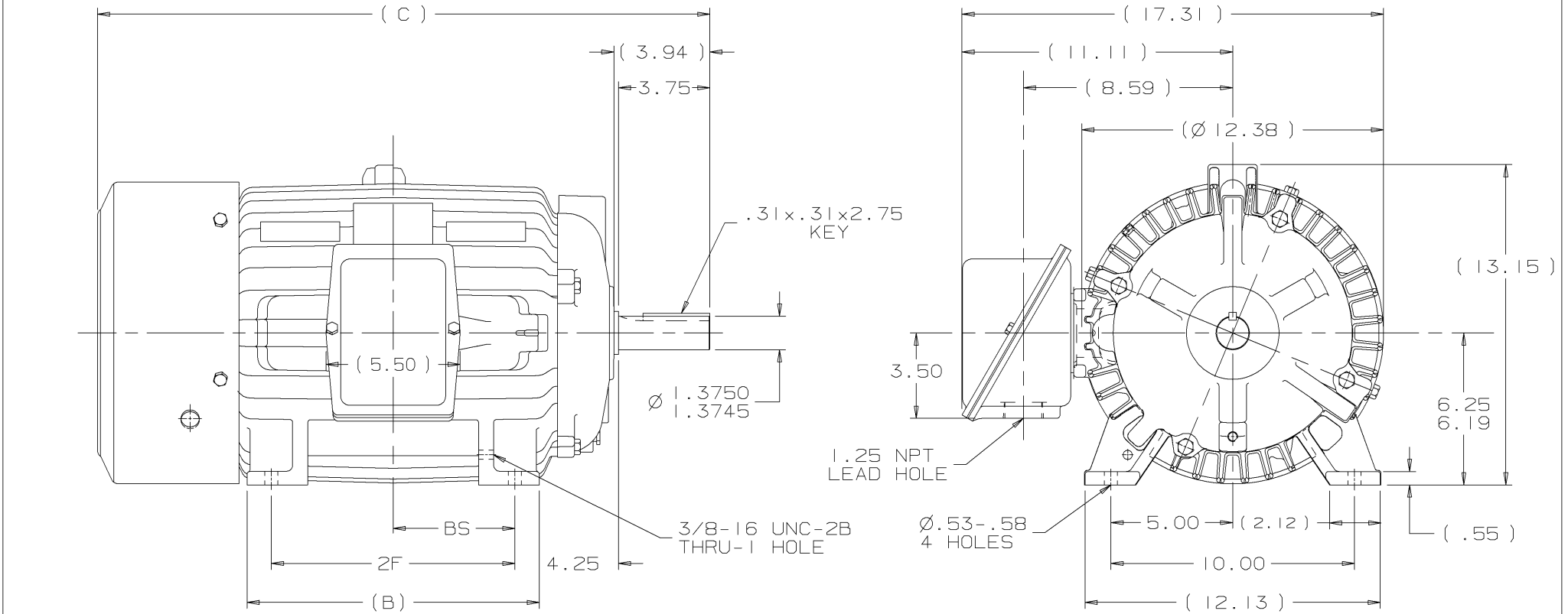
## Nameplate Specifications

Output HP	10 Hp	Output KW	7.5 kW
Frequency	60 Hz	Voltage	460 V
Current	12.0 A	Speed	3525 rpm
Service Factor	1	Phase	3
Efficiency	90.2 %	Power Factor	87
Duty	Continuous	Insulation Class	F
Design Code	B	KVA Code	G
Frame	254U	Enclosure	Totally Enclosed Fan Cooled
Thermal Protection	No Protection	Ambient Temperature	65 °C
Drive End Bearing Size	309	Opp Drive End Bearing Size	207
UL	Recognized	CSA	Y
CE	Y	IP Code	43
Number of Speeds	1		

## Technical Specifications

Electrical Type	Squirrel Cage Induction Run	Starting Method	Across The Line
Poles	2	Rotation	Reversible
Resistance Main	.955 Ohms	Mounting	Rigid Base
Motor Orientation	Horizontal	Drive End Bearing	Ball
Opp Drive End Bearing	Ball	Frame Material	Cast Iron
Shaft Type	U	Overall Length	23.44 in
Frame Length	11.75 in	Shaft Diameter	1.375 in
Shaft Extension	3.75 in	Assembly/Box Mounting	F1/F2 CAPABLE
Outline Drawing	B-SS203580LN-1175	Connection Drawing	A-EE7300-LN


This is an uncontrolled document once printed or downloaded and is subject to change without notice. Date Created:09/07/2022



NOTES:

1. C.BOX CAN BE ROTATED IN 90° STEPS
2. C.BOX CAN BE MOUNTED ON OPPOSITE SIDE BY REMOVING BRACKETS AND TURNING FRAME 180°
3. NAMEPLATES TO BE READ FROM CONDUIT BOX SIDE OF MOTOR

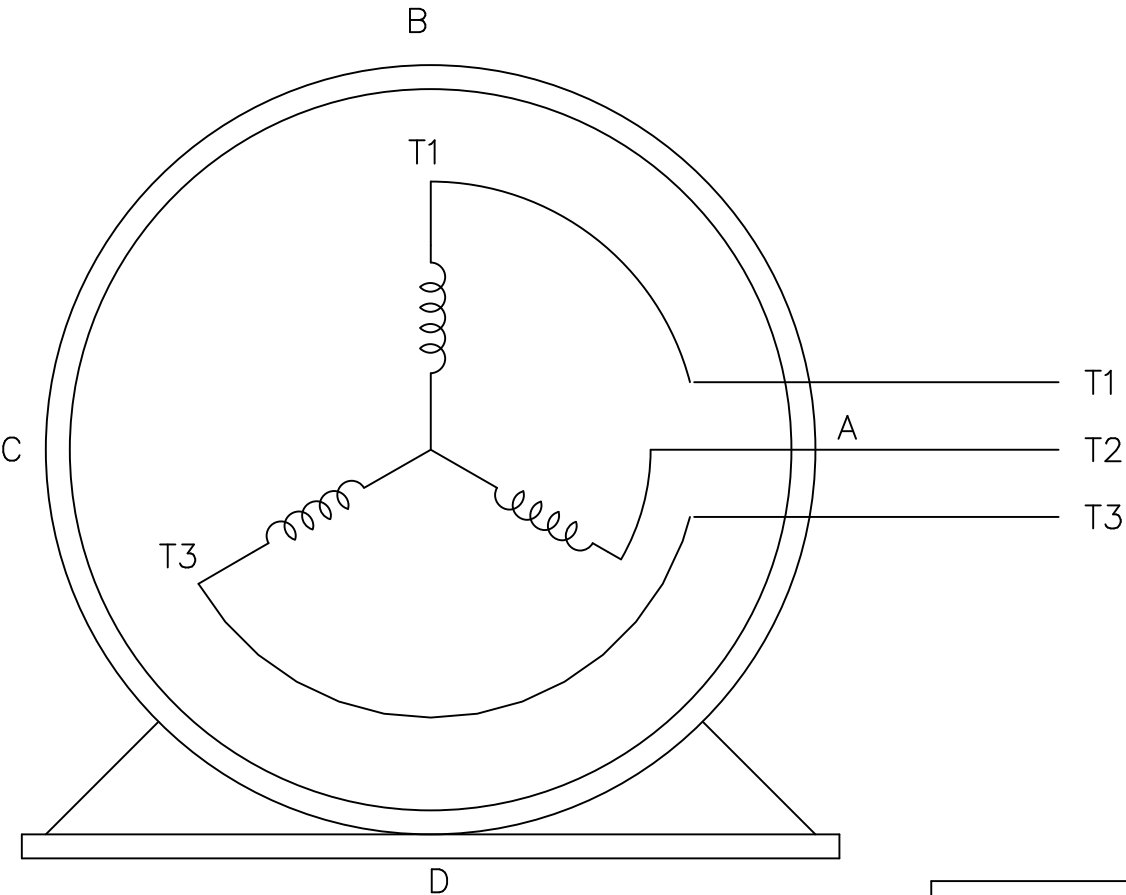
- NOTES:
1. C.BOX CAN BE ROTATED IN 90° STEPS
  2. C.BOX CAN BE MOUNTED ON OPPOSITE SIDE BY REMOVING BRACKETS AND TURNING FRAME 180°
  3. NAMEPLATES TO BE READ FROM CONDUIT BOX SIDE OF MOTOR

												<input checked="" type="checkbox"/>		UNLESS OTHERWISE SPECIFIED DIMENSIONS ARE IN INCHES TOL. ON XX±.03    XXX±.005    XXXX±.0005    ANGLES± 7°30"					
												MAX. SURFACE ROUGHNESS UNLESS OTHERWISE NOTED				DRAWN BY NJS 08-02-2000			
												FINISH				CHKD BY ML 08-02-2000			
												MATERIAL				APPD BY TB 08-02-2000			
DASH	FRAME	B	C	2F	BS		I	08-02-2000	NEW DRAWING			MU32304	NJS	PART NAME OUTLINE - TEFC 250U FR. - BB - TS - STD. CAST C.BOX			DRWG NO B - SS203580LN		
1175	254U	10.25	23.44	8.25	4.12														
1350	256U	12.00	25.19	10.00	5.00		REV	DATE	CHANGE			NAME	L PURCHASED			CADD FILE NO. SS203580LN			

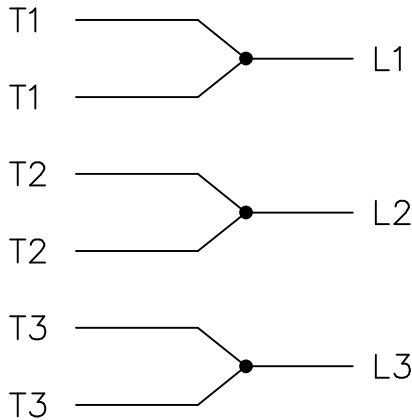
THREE PHASE – SINGLE VOLTAGE  
MOTOR – CONDUIT BOX @ 'A'

EE7300-LN

TO REVERSE ROTATION:  
INTERCHANGE ANY TWO LINE  
LEAD CONNECTIONS




IF MOTOR HAS  
6 LEADS



A-9806 DECAL

OPTIONAL CORD  
CONNECTION

L1 WHITE  
L2 RED  
L3 BLACK

			TOLERANCES UNLESS SPECIFIED			DRAWN BLR 08-13-1999		
			DEC.	INCHES		CHK	ML	08-13-1999
			.X	±.1		APPD	GK	08-13-1999
			.XX	±.02		SCALE 1=1		
2	ADDED OPTIONAL CORD CONNECTION PER MU47226	CTO 03-31-2004	PJB	.XXX	±.005	TITLE CONNECTION DIAGRAM SINGLE VOLT – 3Ø MOTOR		
1	NEW DRAWING	CTO 08-13-1999		.XXXX	±.0005	MAT'L.		
NO.	REVISION	BY & DATE	CHK	ANG	±7'30"	FINISH		
THIS DRAWING IN DESIGN AND DETAIL IS OUR PROPERTY AND MUST NOT BE USED EXCEPT IN CONNECTION WITH OUR WORK ALL RIGHTS OF DESIGN AND INVENTION ARE RESERVED THIS IS AN ELECTRONICALLY GENERATED DOCUMENT – DO NOT SCALE THIS PRINT			RFP	CAD FILE EE7300_LN			SIZE A	DRAWING NO. EE7300-LN
			DIST	WP				PAGE OF 2

## Data Sheet

Date: 2/1/2018

LM21087



Data @ 460 V

## Motor Load Data

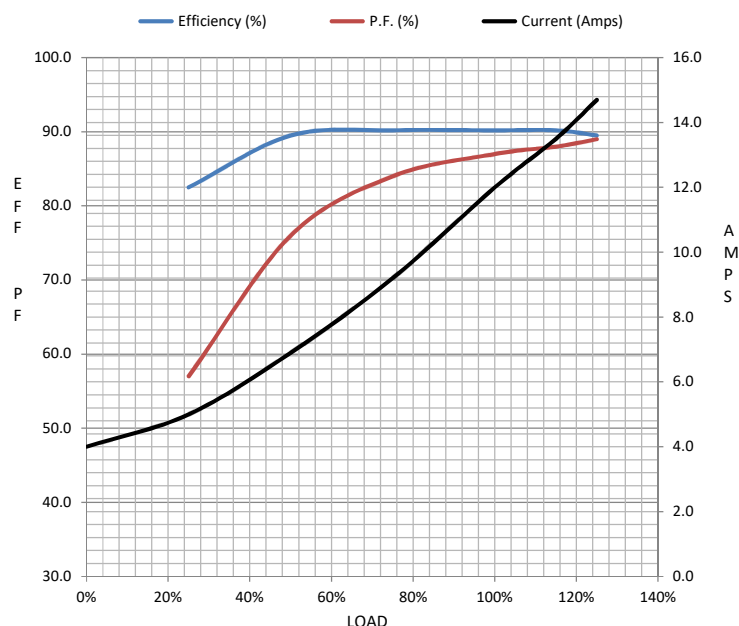
Load	0%	25%	50%	75%	100%	115%	125%	LR	
Current (Amps)	4.0	5.0	6.9	9.2	12.0	13.5	14.7	78.0	
Torque (ft-lb)	0.00	3.7	7.5	11.0	14.9	17.0	18.5	28.5	
RPM	3600	3580	3562	3540	3525	3,510	3500	0	
Efficiency (%)		82.5	89.5	90.2	90.2	89.2	89.5		
P.F. (%)	12.0	57.0	76.0	84.0	87.0	88.0	89.0	38.0	

## Motor Speed Data

	LR	Pull-Up	BD	Rated	Idle
Speed (RPM)	0	1800	3175	3525	3600
Current (Amps)	78.0	67.0	47.0	12.0	4.0
Torque (ft-lb)	28.5	25.0	40.0	14.9	0.00

## Information Block

HP	10.0			
Sync. RPM	3600			
Frame	254			
Enclosure	TEFC			
Construction	TFP			
Voltage	460 V			
Frequency	60 Hz			
Design	B			
LR Code letter	G			
Service Factor	1.15			
Temp Rise @ FL	40 °C			
Duty	CONT			
Ambient	40 °C			
Elevation	1,000 feet			
Rotor/Shaft wk²	0.55 Lb-Ft²			
Ref Wdg	K2152187 R3			
Sound Pressure @ 1M	72 dBA			
VFD Rating	NONE			
Outline Dwg	B-SS203580LN-1175			
Conn. Diag	A-EE7300-LN			
Additional Specifications:				
0				
0				
EQUIV CKT (OHMS / PHASE)				
R1	R2	X1	X2	Xm
0.6080	0.4170	2.0700	1.7550	64.7520



## Speed - Torque Curve

