

PRODUCT INFORMATION PACKET

Model No: LM21085

Catalog No: LM21085

Automotive Duty Motor, 2 HP, 3 Ph, 60 Hz, 460 V, 3600 RPM, 184U Frame, TEFC



Regal and are trademarks of Regal Rexnord Corporation or one of its affiliated companies.
©2022 Regal Rexnord Corporation, All Rights Reserved. MC017097E

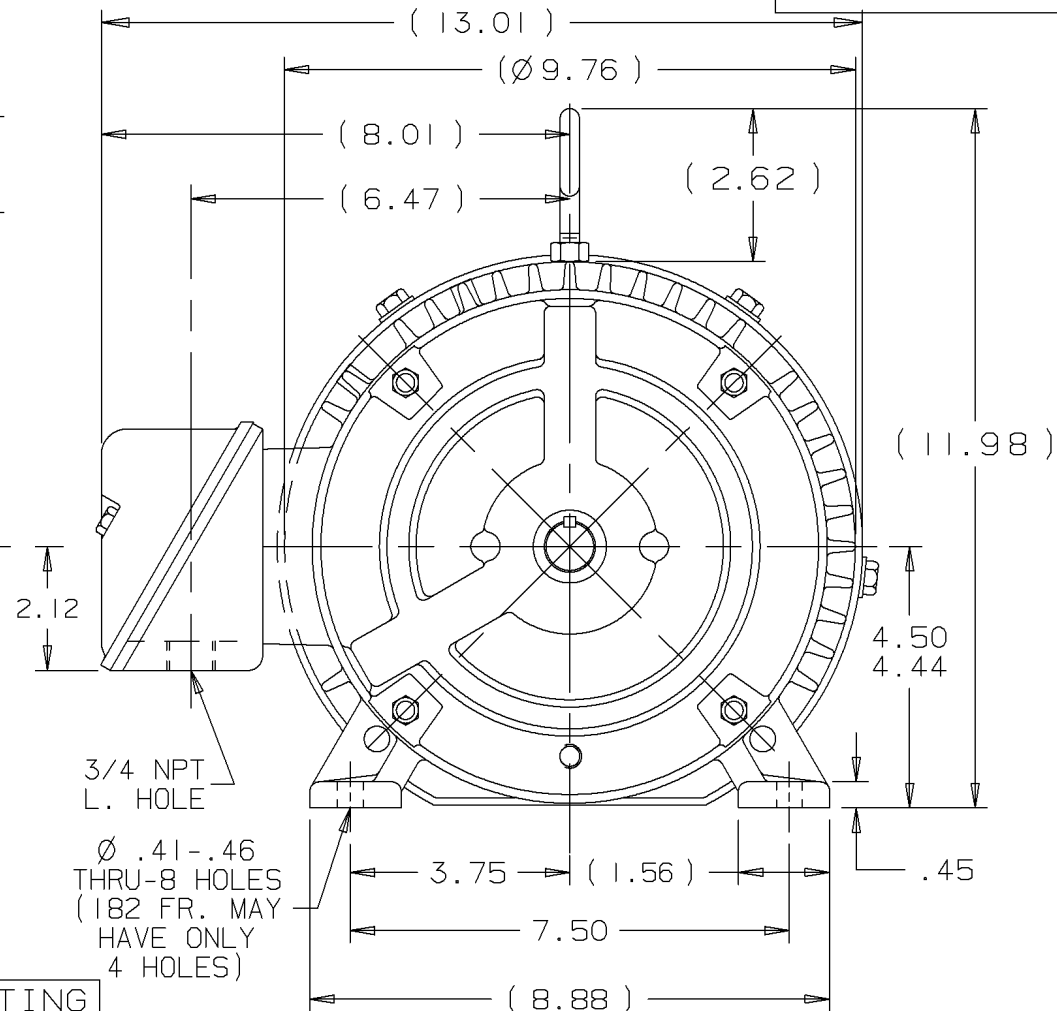
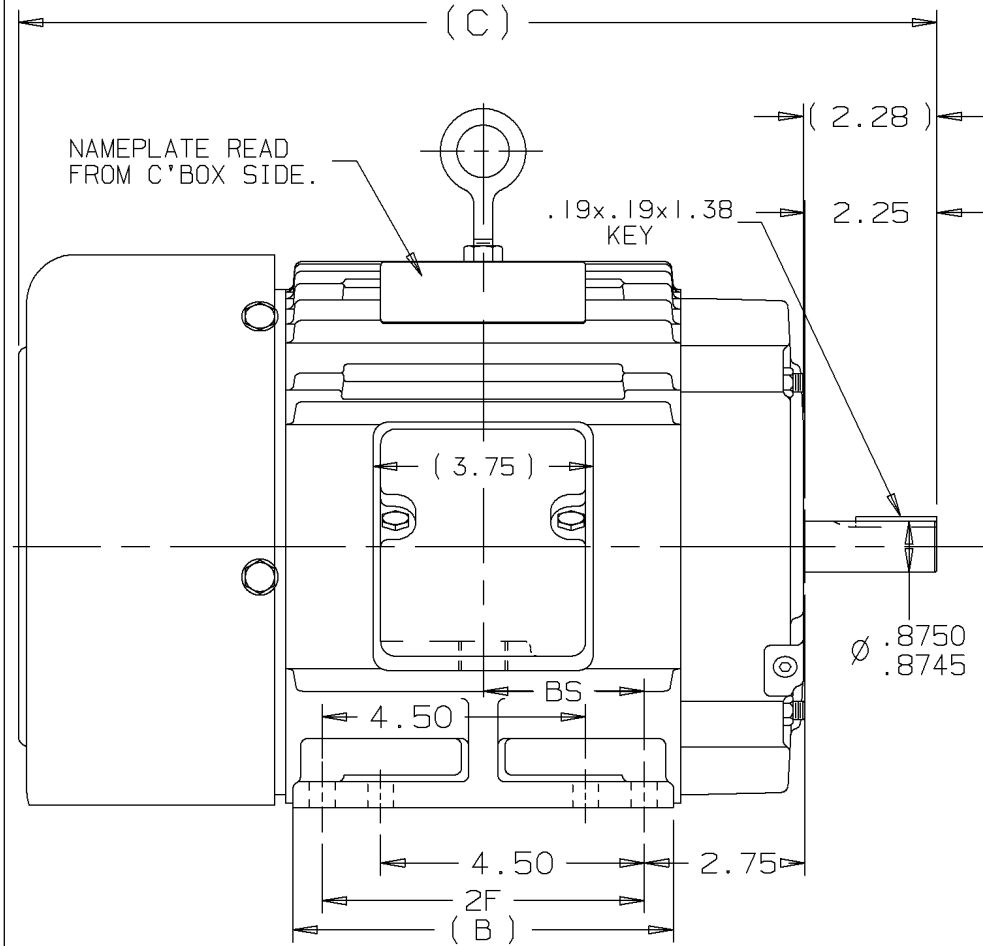
Nameplate Specifications

Output HP	2 Hp	Output KW	1.5 kW
Frequency	60 Hz	Voltage	460 V
Current	2.7 A	Speed	3510 rpm
Service Factor	1	Phase	3
Efficiency	85.5 %	Power Factor	84.6
Duty	Continuous	Insulation Class	F
Design Code	B	KVA Code	L
Frame	184U	Enclosure	Totally Enclosed Fan Cooled
Thermal Protection	No Protection	Ambient Temperature	65 °C
Drive End Bearing Size	206	Opp Drive End Bearing Size	205
UL	Recognized	CSA	Y
CE	Y	IP Code	43
Number of Speeds	1		

Technical Specifications

Electrical Type	Squirrel Cage Induction Run	Starting Method	Across The Line
Poles	2	Rotation	Reversible
Resistance Main	5.5 Ohms	Mounting	Rigid Base
Motor Orientation	Horizontal	Drive End Bearing	Ball
Opp Drive End Bearing	Ball	Frame Material	Cast Iron
Shaft Type	U	Overall Length	15.69 in
Frame Length	6.75 in	Shaft Diameter	0.875 in
Shaft Extension	2.25 in	Assembly/Box Mounting	F1/F2 CAPABLE
Connection Drawing	A-EE7300-LN	Outline Drawing	A-SS69291LN-675

This is an uncontrolled document once printed or downloaded and is subject to change without notice. Date Created:09/07/2022



BOX CAN BE MOUNTED ON OPPOSITE SIDE BY REMOVING BRACKETS & TURNING FRAME 180°.

BOX CAN BE ROTATED IN 90° STEPS.

DASH	FR.	C	B	2F	BS	MOUNTING
575	182U	14.69	5.50	4.50	2.25	F1 OR F2
675	182U	15.69	6.50	5.50	2.75	F1 ONLY
675	184U	15.69	6.50	5.50	2.75	F1 OR F2

NO.	REVISION	BY	DATE	CHK	ANG	TOLERANCES UNLESS SPECIFIED	
						DEC.	TOLERANCE
						.X	± .1
						.XX	± .03
						.XXX	± .005
1	NEW DRAWING MU42917	CAV	08-09-2002	PH	.XXXX	± .0005	
						± 7'30"	

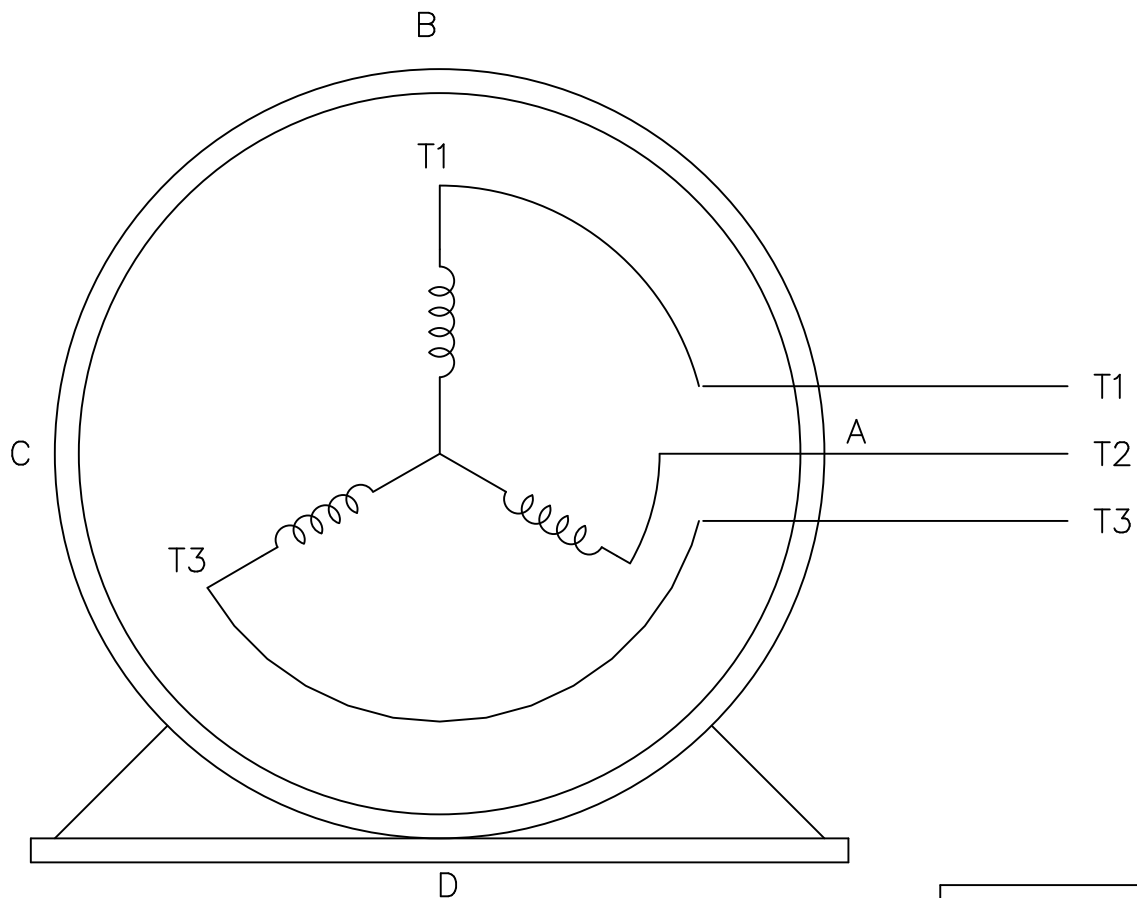
	TITLE	OUTLINE	DRAWN	CAV 08-08-2002
		180U FR. BB TS	CHK	ML 08-08-2002
			APPD	PH 08-09-2002
			SCALE	
			REF	
			FMF	
			PREV	

THIS DRAWING IN DESIGN AND DETAIL IS OUR PROPERTY AND MUST NOT BE USED EXCEPT IN CONNECTION WITH OUR WORK. ALL RIGHTS OF DESIGN AND INVENTION ARE RESERVED. THIS IS AN ELECTRONICALLY GENERATED DOCUMENT - DO NOT SCALE THIS PRINT		PURCHASED	CAD FILE	SS69291LN	SHOP BOOK	SIZE	DRAWING NO.	REV.
		DIST	WA - LB - WC - LM - BR - BY				SS69291LN	

THREE PHASE – SINGLE VOLTAGE
MOTOR – CONDUIT BOX @ 'A'

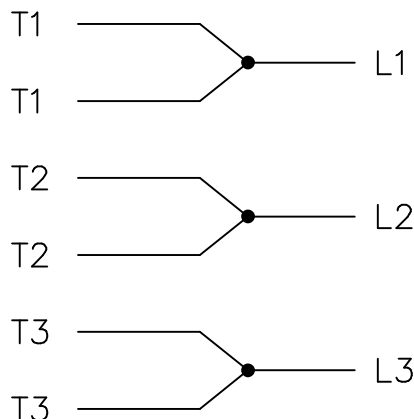
EE7300-LN

TO REVERSE ROTATION:
INTERCHANGE ANY TWO LINE
LEAD CONNECTIONS



VIEW OF TERMINAL END


IF MOTOR HAS
6 LEADS



A-9806 DECAL

OPTIONAL CORD
CONNECTION

L1 WHITE
L2 RED
L3 BLACK

				TOLERANCES UNLESS SPECIFIED			DRAWN BLR 08-13-1999				
				DEC.	INCHES		CHK ML 08-13-1999				
				.X	±.1		APPD GK 08-13-1999				
				.XX	±.02		SCALE 1=1				
2	ADDED OPTIONAL CORD CONNECTION PER MU47226	CTO 03-31-2004	PJB	.XXX	±.005	TITLE CONNECTION DIAGRAM SINGLE VOLT – 3Ø MOTOR	REF				
1	NEW DRAWING	CTO 08-13-1999		.XXXX	±.0005		MAT'L.	FMF			
NO.	REVISION	BY & DATE	CHK	ANG	±7'30"	FINISH	PREV				
THIS DRAWING IN DESIGN AND DETAIL IS OUR PROPERTY AND MUST NOT BE USED EXCEPT IN CONNECTION WITH OUR WORK ALL RIGHTS OF DESIGN AND INVENTION ARE RESERVED THIS IS AN ELECTRONICALLY GENERATED DOCUMENT – DO NOT SCALE THIS PRINT				RFP	CAD FILE EE7300_LN		SIZE	DRAWING NO.	PAGE	OF	REV.
				DIST WP			A	EE7300-LN			2

Data Sheet

Date: 1/30/2018

LM21085



Data @ 460 V

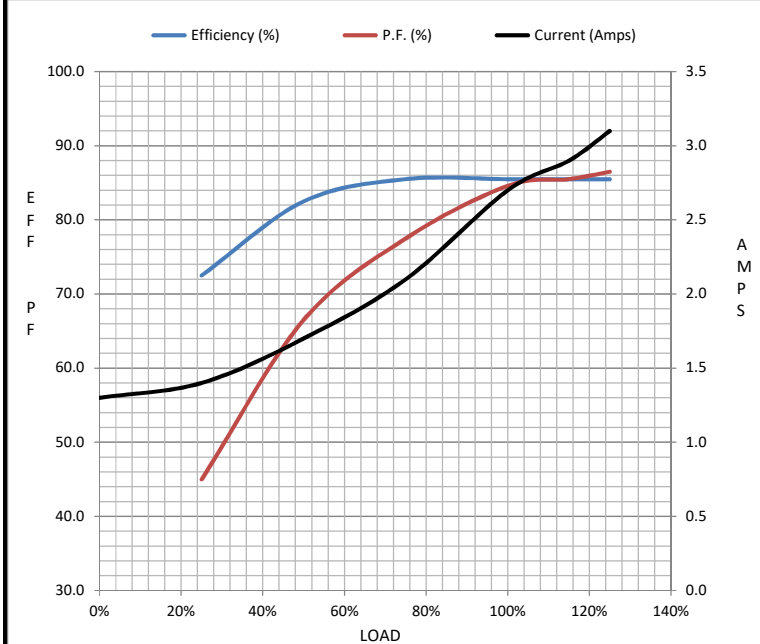
Motor Load Data

Load	0%	25%	50%	75%	100%	115%	125%	LR
Current (Amps)	1.30	1.40	1.70	2.10	2.70	2.90	3.1	22.5
Torque (ft-lb)	0.00	0.75	1.50	2.20	3.0	3.5	3.7	8.0
RPM	3600	3585	3565	3545	3510	3,500	3490	0
Efficiency (%)		72.5	82.5	85.5	85.5	85.5	85.5	
P.F. (%)	33.5	45.0	66.5	77.5	84.6	85.5	86.5	48.0

Motor Speed Data

	LR	Pull-Up	BD	Rated	Idle
Speed (RPM)	0	1755	2840	3510	3600
Current (Amps)	22.5	20.3	14.5	2.70	1.30
Torque (ft-lb)	8.0	6.8	12.0	3.0	0.00

Information Block				
HP	2.0			
Sync. RPM	3600			
Frame	182			
Enclosure	TEFC			
Construction	TFS			
Voltage	460 V			
Frequency	60 Hz			
Design	B			
LR Code letter	L			
Service Factor	1.15			
Temp Rise @ FL	30 °C			
Duty	CONT			
Ambient	40 °C			
Elevation	1,000 feet			
Rotor/Shaft wk ²	0.18 Lb-Ft ²			
Ref Wdg	K182272 NONE			
Sound Pressure @ 1M	72 dBA			
VFD Rating	NONE			
Outline Dwg	A-SS69291LN-675			
Conn. Diag	A-EE7300-LN			
Additional Specifications:				
0				
0				
EQUIV CKT (OHMS / PHASE)				
R1	R2	X1	X2	Xm
3.2640	2.6250	8.9680	4.3280	212.8500



Speed - Torque Curve

