

# PRODUCT INFORMATION PACKET

Model No: LM21084

Catalog No: LM21084

Automotive Duty Motor, 1.50 HP, 3 Ph, 60 Hz, 460 V, 3600 RPM, 182U Frame, TENV



Regal and are trademarks of Regal Rexnord Corporation or one of its affiliated companies.  
©2022 Regal Rexnord Corporation, All Rights Reserved. MC017097E

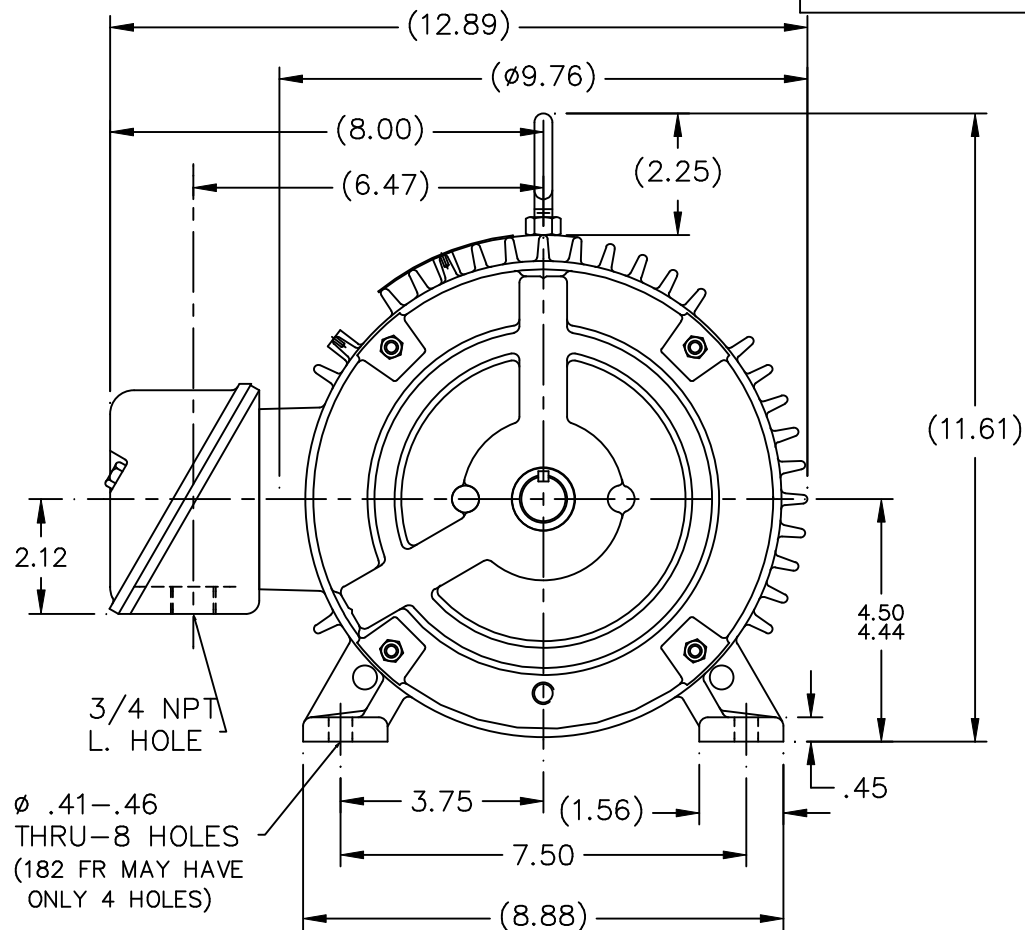
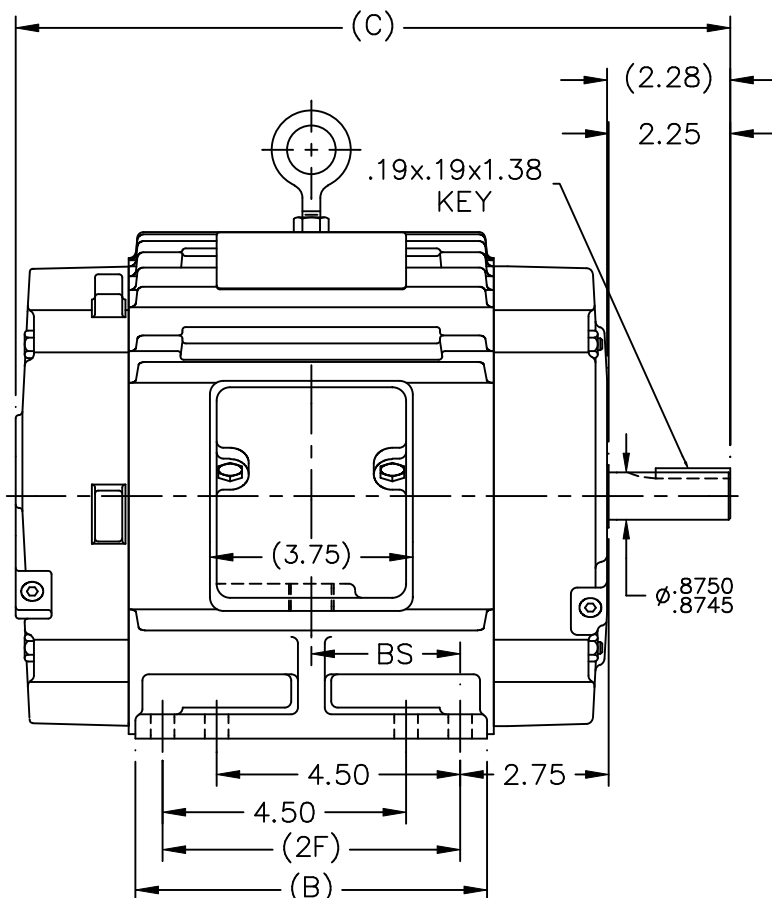
## Nameplate Specifications

Output HP	1.50 Hp	Output KW	1.1 kW
Frequency	60 Hz	Voltage	460 V
Current	2.0 A	Speed	3480 rpm
Service Factor	1	Phase	3
Efficiency	85.5 %	Power Factor	87
Duty	Continuous	Insulation Class	F
Design Code	B	KVA Code	L
Frame	182U	Enclosure	Totally Enclosed Non Ventilated
Thermal Protection	No Protection	Ambient Temperature	65 °C
Drive End Bearing Size	206	Opp Drive End Bearing Size	205
UL	Recognized	CSA	Y
CE	Y	IP Code	43
Number of Speeds	1		

## Technical Specifications

Electrical Type	Squirrel Cage Induction Run	Starting Method	Across The Line
Poles	2	Rotation	Reversible
Resistance Main	8.95 Ohms	Mounting	Rigid Base
Motor Orientation	Horizontal	Drive End Bearing	Ball
Opp Drive End Bearing	Ball	Frame Material	Cast Iron
Shaft Type	U	Overall Length	12.21 in
Frame Length	5.75 in	Shaft Diameter	0.875 in
Shaft Extension	2.25 in	Assembly/Box Mounting	F1/F2 CAPABLE
Connection Drawing	A-EE7300-LN	Outline Drawing	A-SS68737LN-575


SS68737LN



## NOTES:

1. CONDUIT BOX CAN BE ROTATED IN 90° STEPS.
2. CONDUIT BOX CAN BE MOUNTED ON OPPOSITE SIDE BY REMOVING BRACKETS AND TURNING FRAME 180°.
3. NAMEPLATE TO BE READ FROM CONDUIT BOX SIDE OF MOTOR

DASH	FR.	C	B	2F	BS	MOUNTING
575	182U	12.21	5.50	4.50	2.25	F1 ONLY
675	182U	13.21	6.50	5.50	2.75	F1 ONLY
675	184U	13.21	6.50	5.50	2.75	F1 OR F2

				TOLERANCES UNLESS SPECIFIED			DRAWN BJW 06-26-2000					
				DEC.	INCHES		CHK	ML	06-26-2000			
3	REV'D TO SHOW STUDS ON D.E. OF MOTOR.CN29200-805	NJS 08-25-2000		.X	±.1		APPD	TB	06-26-2000			
2	REVISED OUTLINE TO HAVE C'BOX FROM:	MSG 08-04-2000		.XX	±.03	TITLE OUTLINE - TENV 180U FR. - 140FR. EXT. - CAST C'BOX			SCALE	9=32		
2	A-SS68726LN CN 29200-179			.XXX	±.005				REF			
1	NEW DRAWING MU31620	BJW 06-26-2000		.XXXX	±.0005	MAT'L.			FMF			
NO.	REVISION	BY & DATE	CHK	ANG	±7'30"	FINISH			PREV			
THIS DRAWING IN DESIGN AND DETAIL IS OUR PROPERTY AND MUST NOT BE USED EXCEPT IN CONNECTION WITH OUR WORK ALL RIGHTS OF DESIGN AND INVENTION ARE RESERVED THIS IS AN ELECTRONICALLY GENERATED DOCUMENT - DO NOT SCALE THIS PRINT			RFP		CAD FILE SS68737LN			SIZE	DRAWING NO.	PAGE	OF	REV.
			DIST LB					A	SS68737LN			3

ERROR: syntaxerror  
OFFENDING COMMAND: --nostringval--

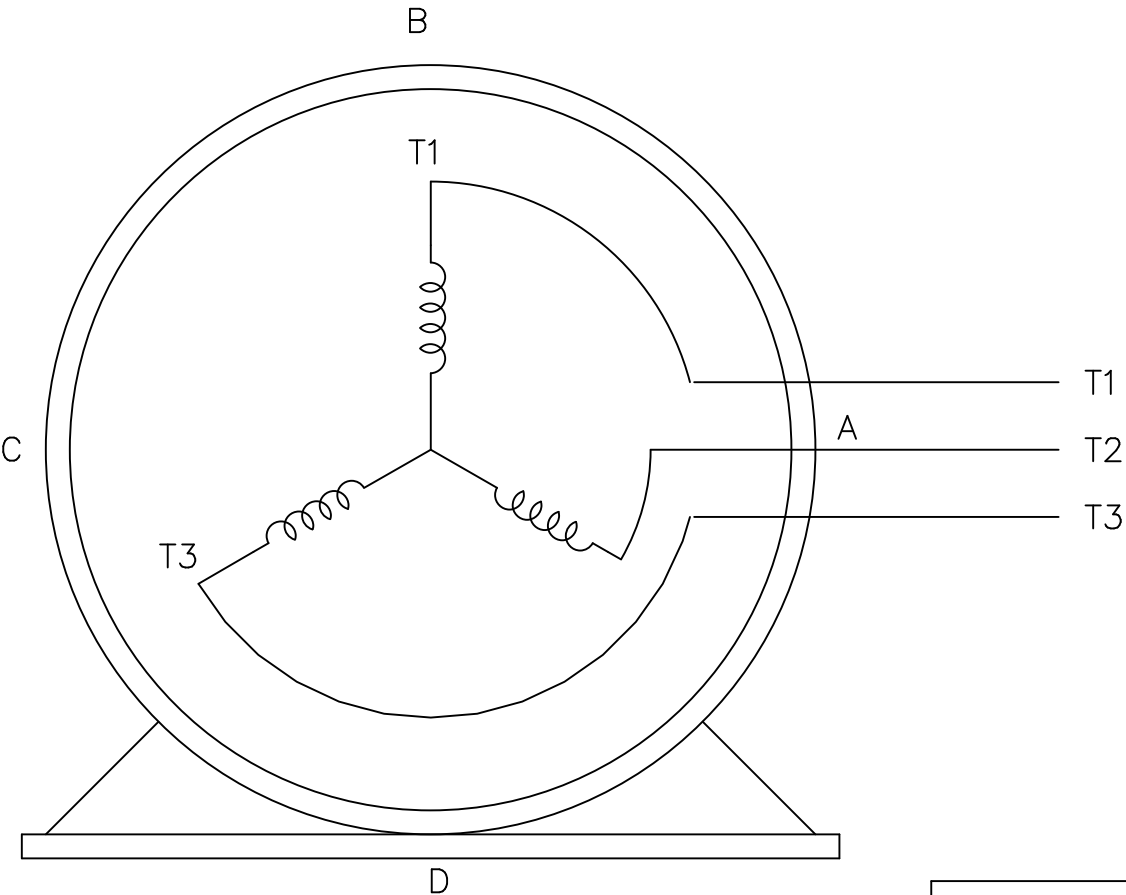
STACK:

/im  
-savelevel-

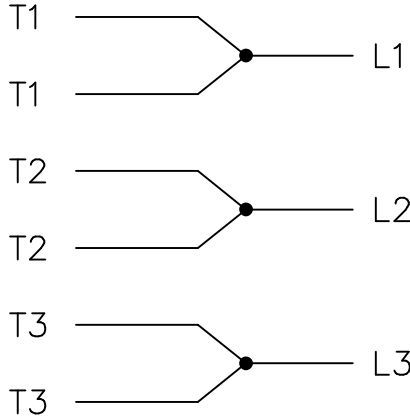
THREE PHASE – SINGLE VOLTAGE  
MOTOR – CONDUIT BOX @ 'A'

EE7300-LN

TO REVERSE ROTATION:  
INTERCHANGE ANY TWO LINE  
LEAD CONNECTIONS




IF MOTOR HAS  
6 LEADS



A-9806 DECAL

OPTIONAL CORD  
CONNECTION

L1 WHITE  
L2 RED  
L3 BLACK

			TOLERANCES UNLESS SPECIFIED			DRAWN BLR 08-13-1999		
			DEC.	INCHES		CHK	ML	08-13-1999
			.X	±.1		APPD	GK	08-13-1999
			.XX	±.02		SCALE 1=1		
2	ADDED OPTIONAL CORD CONNECTION PER MU47226	CTO 03-31-2004	PJB	.XXX	±.005	TITLE CONNECTION DIAGRAM SINGLE VOLT – 3Ø MOTOR		
1	NEW DRAWING	CTO 08-13-1999		.XXXX	±.0005	MAT'L.		
NO.	REVISION	BY & DATE	CHK	ANG	±7'30"	FINISH		
THIS DRAWING IN DESIGN AND DETAIL IS OUR PROPERTY AND MUST NOT BE USED EXCEPT IN CONNECTION WITH OUR WORK ALL RIGHTS OF DESIGN AND INVENTION ARE RESERVED THIS IS AN ELECTRONICALLY GENERATED DOCUMENT – DO NOT SCALE THIS PRINT			RFP	CAD FILE EE7300_LN			SIZE A	DRAWING NO. EE7300-LN
			DIST	WP				PAGE OF 2



**2100 WASHINGTON ST.  
GRAFTON, WI  
PH. 262-277-8810**

**CERTIFICATION DATA SHEET**

**CONN. DIAGRAM:** A-EE7300-LN

**OUTLINE:** A-SS68737LN-575

**CATALOG #:** LM21084

**WINDING #:** K182282 1

**MOUNTING:** F1/F2 CAPABLE

**TYPICAL MOTOR PERFORMANCE DATA**

HP	kW	SYNC. RPM	F.L. RPM	FRAME	ENCLOSURE	KVA CODE	DESIGN
1 1/2	1.12	3600	3480	182U	TENV	L	B

PH	Hz	VOLTS	AMPS	START TYPE	DUTY	INSL	S.F.	AMB°C
3	60	460	2	ACROSS THE LINE	CONTINUOUS	F3	1.0	65

<b>FULL LOAD EFF:</b>	85.5	<b>3/4 LOAD EFF:</b>	85.5	<b>1/2 LOAD EFF:</b>	82.5	<b>GTD. EFF</b>		<b>ELEC. TYPE</b>
<b>FULL LOAD PF:</b>	87	<b>3/4 LOAD PF:</b>	83	<b>1/2 LOAD PF:</b>	76	82.5		SQ CAGE IND RUN

F.L. TORQUE	LOCKED ROTOR AMPS	L.R. TORQUE	B.D. TORQUE	F.L. RISE°C
2.3 LB-FT	17.5	6 LB-FT 261 %	8.2 LB-FT 357 %	40

SOUND PRESSURE @ 3 FT.	SOUND POWER	ROTOR WK^2	MAX. WK^2	SAFE STALL TIME	STARTS / HOUR	APPROX. MOTOR WGT
65 dBA	75 dBA	0.16 LB-FT^2	0 LB-FT^2	15 SEC.	0	65 LBS.

**\*\*\* SUPPLEMENTAL INFORMATION \*\*\***

DE BRACKET TYPE	ODE BRACKET TYPE	MOUNT TYPE	ORIENTATION	SEVERE DUTY	HAZARDOUS LOCATION	DRIP COVER	SCREENS	PAINT
STANDARD	STANDARD	RIGID	HORIZONTAL	FALSE	NONE	FALSE	NONE	GRAY - LINCOLN

BEARINGS		GREASE	SHAFT TYPE	SPECIAL DE	SPECIAL ODE	SHAFT MATERIAL	FRAME MATERIAL
DE	ODE						
BALL	BALL	POLYREX EM	U	NONE	NONE	1144 STRESSPROOF (C-223)	CAST IRON
206	205						

THERMO-PROTECTORS				THERMISTORS	CONTROL	SPACE HEATERS
THERMOSTATS	PROTECTORS	WDG RTDs	BRG RTDs			
NONE	NOT	NONE	NONE	NONE	FALSE	NONE VOLTS

\*  
  
N  
  
O  
  
T  
  
E  
  
S  
  
\*

<b>INVERTER TORQUE:</b>	NONE
<b>INV. HP SPEED RANGE:</b>	NONE
<b>ENCODER:</b>	NONE
	NONE NONE
	NONE NONE PPR
<b>BRAKE:</b>	NONE NONE
	NONE P/N NONE
	NONE NONE
	FT-LB V NONE Hz

## Data Sheet

Date: 1/24/2018

LM21084



Data @ 460 V

## Motor Load Data

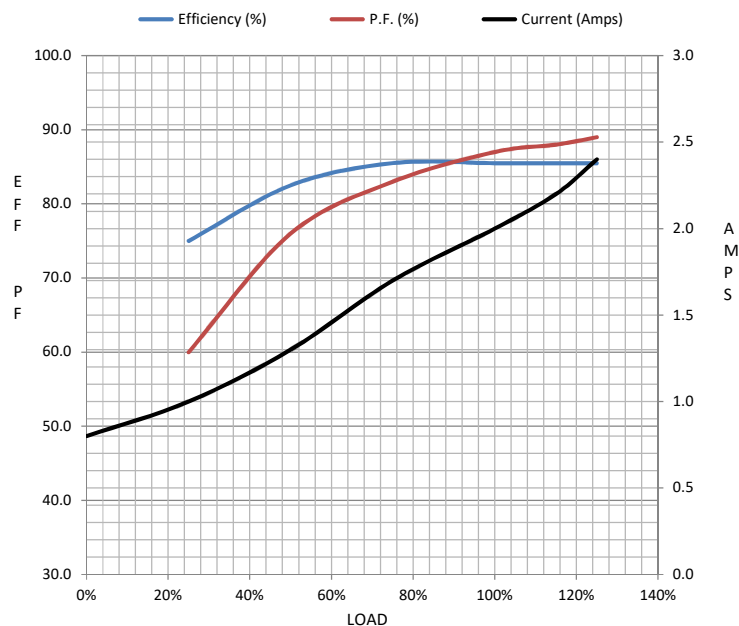
Load	0%	25%	50%	75%	100%	115%	125%	LR	
Current (Amps)	0.80	1.00	1.30	1.70	2.00	2.20	2.40	17.5	
Torque (ft-lb)	0.00	0.55	1.20	1.80	2.30	2.70	2.90	6.0	
RPM	3600	3560	3520	3500	3480	3,465	3450	0	
Efficiency (%)		75.0	82.5	85.5	85.5	85.5	85.5		
P.F. (%)	12.0	60.0	76.0	83.0	87.0	88.0	89.0	50.0	

## Motor Speed Data

	LR	Pull-Up	BD	Rated	Idle
Speed (RPM)	0	1800	2885	3480	3600
Current (Amps)	17.5	16.5	10.5	2.00	0.80
Torque (ft-lb)	6.0	5.5	8.2	2.30	0.00

## Information Block

HP	1.5			
Sync. RPM	3600			
Frame	182			
Enclosure	TENV			
Construction	TTS			
Voltage	460 V			
Frequency	60 Hz			
Design	B			
LR Code letter	L			
Service Factor	1.15			
Temp Rise @ FL	40 °C			
Duty	CONT			
Ambient	40 °C			
Elevation	1,000 feet			
Rotor/Shaft wk²	0.16 Lb-Ft²			
Ref Wdg	K182282 NONE			
Sound Pressure @ 1M	65 dBA			
VFD Rating	NONE			
Outline Dwg	A-SS68737LN-575			
Conn. Diag	A-EE7300-LN			
Additional Specifications:				
0				
0				
EQUIV CKT (OHMS / PHASE)				
R1	R2	X1	X2	Xm
5.0840	3.0240	12.1150	6.6720	333.9630



## Speed - Torque Curve

