

PRODUCT INFORMATION PACKET

Model No: LM20709

Catalog No: LM20709

Automotive Duty Motor, 1.50 HP, 3 Ph, 60 Hz, 460 V, 1200 RPM, 184U Frame, TENV



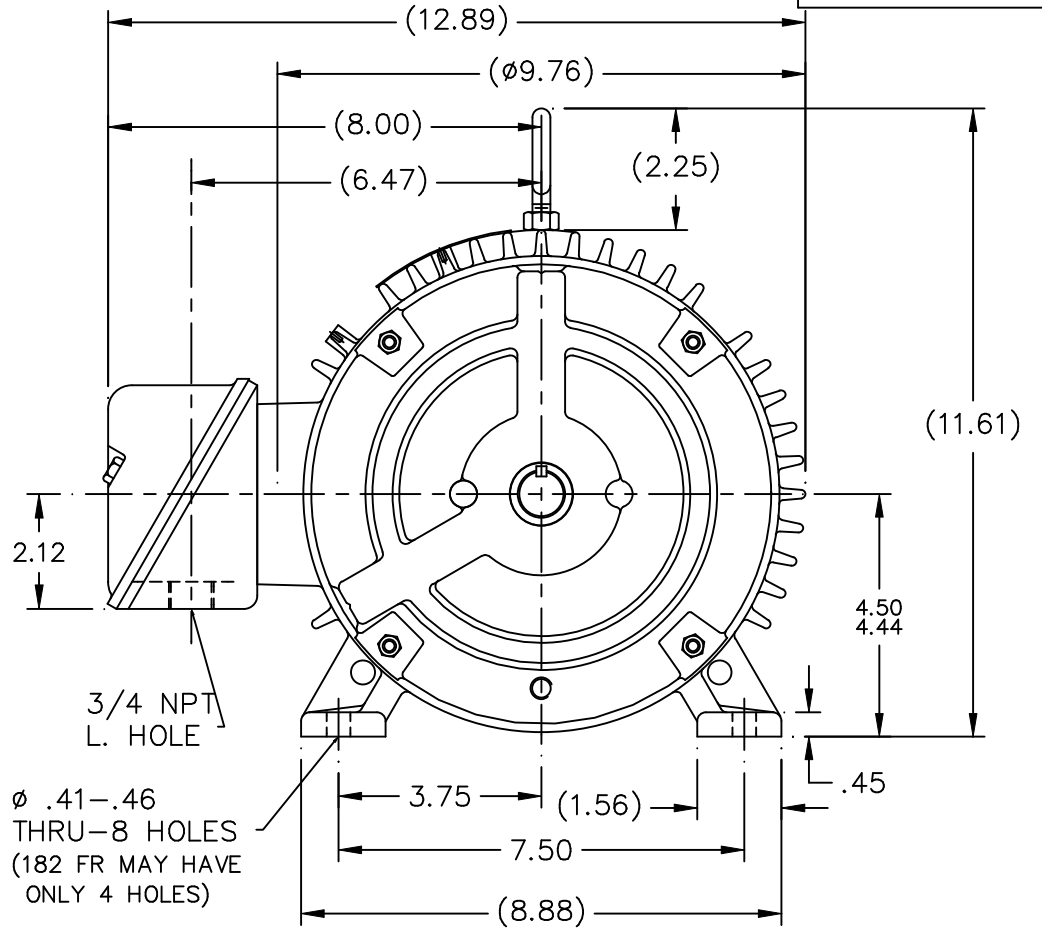
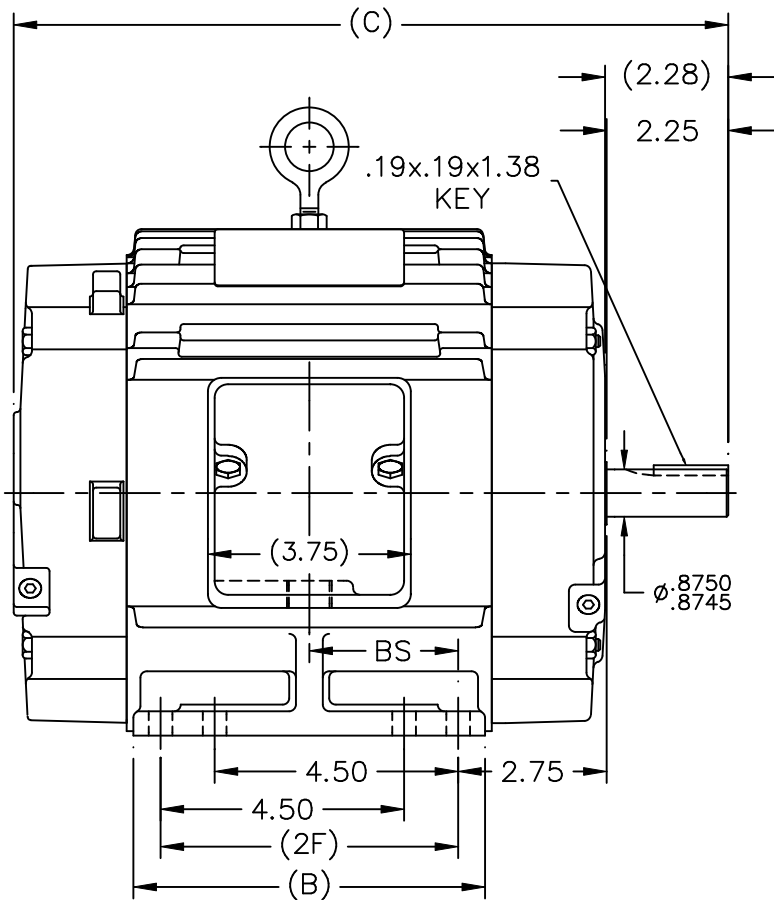
Regal and are trademarks of Regal Rexnord Corporation or one of its affiliated companies.
©2022 Regal Rexnord Corporation, All Rights Reserved. MC017097E

Nameplate Specifications

Output HP	1.50 Hp	Output KW	1.1 kW
Frequency	60 Hz	Voltage	460 V
Current	2.2 A	Speed	1175 rpm
Service Factor	1.1	Phase	3
Efficiency	87.5 %	Power Factor	71
Duty	Continuous	Insulation Class	F
Design Code	B	KVA Code	L
Frame	184U	Enclosure	Totally Enclosed Non Ventilated
Thermal Protection	No Protection	Ambient Temperature	65 °C
Drive End Bearing Size	206	Opp Drive End Bearing Size	205
UL	Recognized	CSA	Y
CE	Y	IP Code	43
Number of Speeds	1		

Technical Specifications

Electrical Type	Squirrel Cage Induction Run	Starting Method	Across The Line
Poles	6	Rotation	Reversible
Resistance Main	7.75 Ohms	Mounting	Rigid Base
Motor Orientation	Horizontal	Drive End Bearing	Ball
Opp Drive End Bearing	Ball	Frame Material	Cast Iron
Shaft Type	U	Overall Length	13.21 in
Frame Length	6.75 in	Shaft Diameter	0.875 in
Shaft Extension	2.25 in	Assembly/Box Mounting	F1/F2 CAPABLE
Connection Drawing	A-EE7300-LN	Outline Drawing	A-SS68737LN-675



NOTES:

1. CONDUIT BOX CAN BE ROTATED IN 90° STEPS.
2. CONDUIT BOX CAN BE MOUNTED ON OPPOSITE SIDE BY REMOVING BRACKETS AND TURNING FRAME 180°.
3. NAMEPLATE TO BE READ FROM CONDUIT BOX SIDE OF MOTOR

DASH	FR.	C	B	2F	BS	MOUNTING
575	182U	12.21	5.50	4.50	2.25	F1 ONLY
675	182U	13.21	6.50	5.50	2.75	F1 ONLY
675	184U	13.21	6.50	5.50	2.75	F1 OR F2

NO.	REVISION	BY & DATE
3	REV'D TO SHOW STUDS ON D.E. OF MOTOR.CN29200-805	NJS 08-25-2000
2	REVISED OUTLINE TO HAVE C'BOX FROM:	MSG 08-04-2000
2	A-SS68726LN CN 29200-179	
1	NEW DRAWING MU31620	BJW 06-26-2000

TOLERANCES UNLESS SPECIFIED	
DEC.	INCHES
.X	±.1
.XX	±.03
.XXX	±.005
.XXXX	±.0005
ANG	±7'30"

TITLE OUTLINE - TENV	
180U FR. - 140FR. EXT. - CAST C'BOX	
MAT'L.	FINISH



DRAWN	BJW	06-26-2000
CHK	ML	06-26-2000
APPD	TB	06-26-2000
SCALE	9=32	
REF		
FMF		
PREV		

THIS DRAWING IN DESIGN AND DETAIL IS OUR PROPERTY AND MUST NOT BE USED EXCEPT IN CONNECTION WITH OUR WORK ALL RIGHTS OF DESIGN AND INVENTION ARE RESERVED THIS IS AN ELECTRONICALLY GENERATED DOCUMENT - DO NOT SCALE THIS PRINT

RFP	CAD FILE SS68737LN
DIST LB	

SIZE	DRAWING NO.	PAGE	OF	REV.
A	SS68737LN			3

ERROR: syntaxerror
OFFENDING COMMAND: --nostringval--

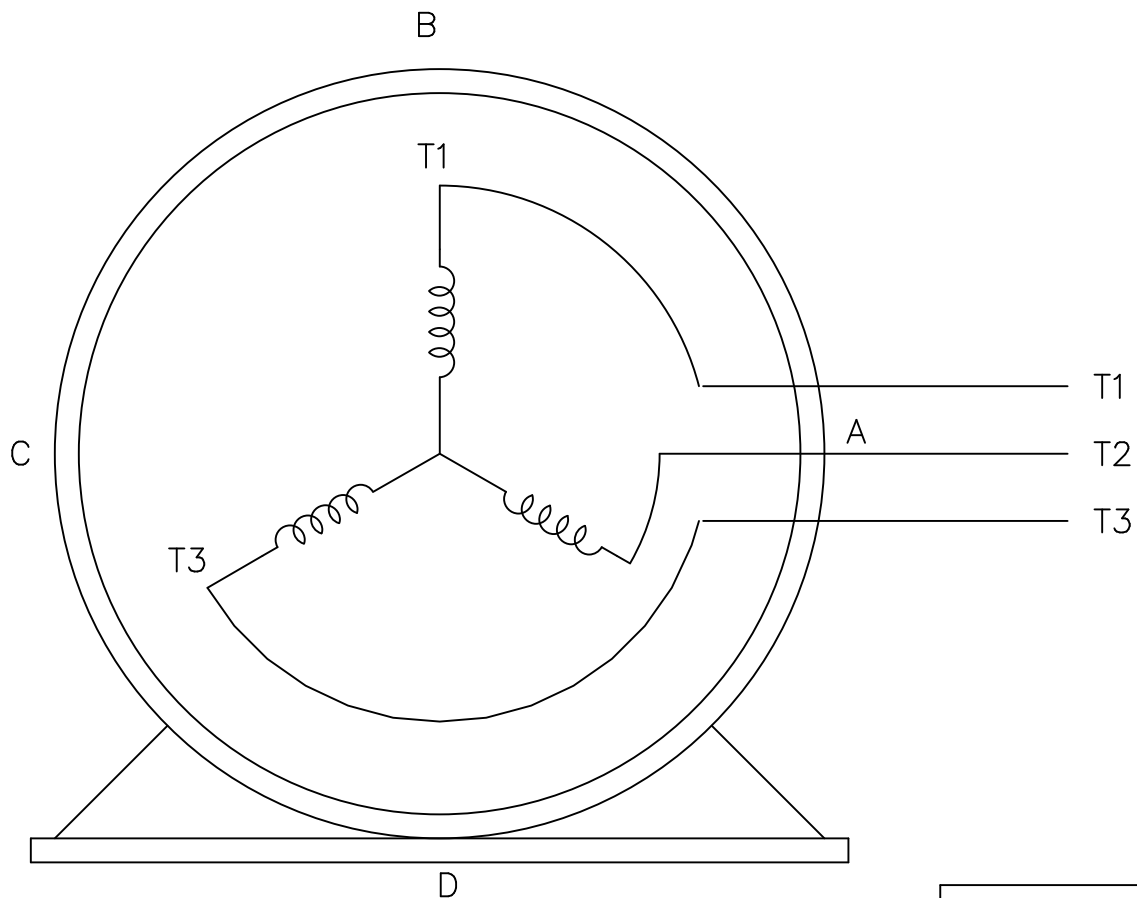
STACK:

/im
-savelevel-

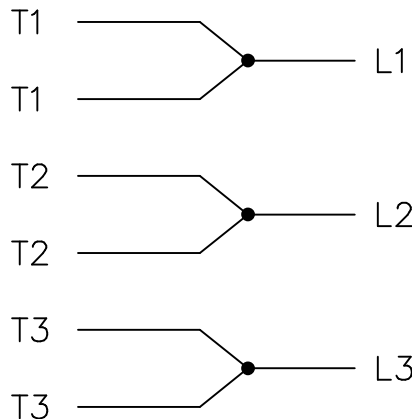
THREE PHASE – SINGLE VOLTAGE
MOTOR – CONDUIT BOX @ 'A'

EE7300-LN

TO REVERSE ROTATION:
INTERCHANGE ANY TWO LINE
LEAD CONNECTIONS




IF MOTOR HAS
6 LEADS



A-9806 DECAL

OPTIONAL CORD
CONNECTION

L1 WHITE
L2 RED
L3 BLACK

				TOLERANCES UNLESS SPECIFIED			DRAWN BLR 08-13-1999		
				DEC.	INCHES		CHK ML 08-13-1999		
				.X	±.1		APPD GK 08-13-1999		
				.XX	±.02		SCALE 1=1		
2	ADDED OPTIONAL CORD CONNECTION PER MU47226	CTO 03-31-2004	PJB	.XXX	±.005	TITLE CONNECTION DIAGRAM SINGLE VOLT – 3Ø MOTOR	REF		
1	NEW DRAWING	CTO 08-13-1999		.XXXX	±.0005		MAT'L.	FMF	
NO.	REVISION	BY & DATE	CHK	ANG	±7'30"	FINISH	PREV		
THIS DRAWING IN DESIGN AND DETAIL IS OUR PROPERTY AND MUST NOT BE USED EXCEPT IN CONNECTION WITH OUR WORK ALL RIGHTS OF DESIGN AND INVENTION ARE RESERVED THIS IS AN ELECTRONICALLY GENERATED DOCUMENT – DO NOT SCALE THIS PRINT				RFP	CAD FILE EE7300_LN		SIZE	DRAWING NO. PAGE OF	REV.
				DIST WP			A	EE7300-LN	2

Data Sheet

Date: 1/30/2018

LM20709



Data @ **460 V**

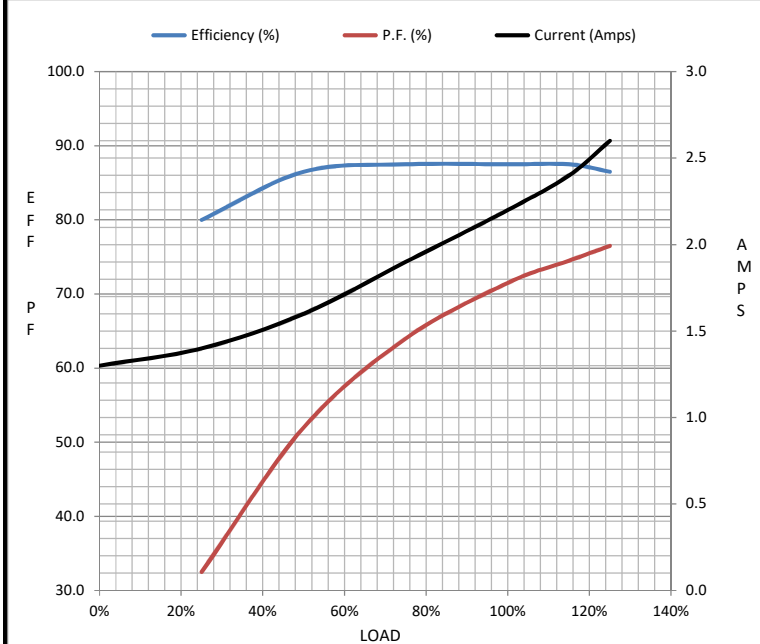
Motor Load Data

Load	0%	25%	50%	75%	100%	115%	125%	LR
Current (Amps)	1.30	1.40	1.60	1.90	2.20	2.40	2.60	17.0
Torque (ft-lb)	0.00	1.70	3.4	5.2	6.8	7.8	8.5	13.4
RPM	1200	1195	1188	1182	1175	1,172	1168	0
Efficiency (%)		80.0	86.5	87.5	87.5	87.5	86.5	
P.F. (%)	6.0	32.5	52.0	64.0	71.5	74.5	76.5	45.0

Motor Speed Data

	LR	Pull-Up	BD	Rated	Idle
Speed (RPM)	0	600	1050	1175	1200
Current (Amps)	17.0	15.0	8.2	2.20	1.30
Torque (ft-lb)	13.4	11.8	24.4	6.8	0.00

Information Block				
HP	1.5			
Sync. RPM	1200			
Frame	182			
Enclosure	TENV			
Construction	TTS			
Voltage	460 V			
Frequency	60 Hz			
Design	B			
LR Code letter	L			
Service Factor	1.15			
Temp Rise @ FL	50 °C			
Duty	CONT			
Ambient	40 °C			
Elevation	1,000 feet			
Rotor/Shaft wk ²	0.38 Lb-Ft ²			
Ref Wdg	K182644 NONE			
Sound Pressure @ 1M	60 dBA			
VFD Rating	NONE			
Outline Dwg	A-SS68737LN-675			
Conn. Diag	A-EE7300-LN			
Additional Specifications:				
0				
0				
EQUIV CKT (OHMS / PHASE)				
R1	R2	X1	X2	Xm
1.3200	0.7140	3.0040	3.3720	44.6990



Speed - Torque Curve

