

PRODUCT INFORMATION PACKET



Model No: LM20676
Catalog No: LM20676
3 HP Washdown Motor, 3 phase, 1800 RPM, 230/460 V, 182T Frame, ODP
Washdown Motors



Regal and Leeson are trademarks of Regal Rexnord Corporation or one of its affiliated companies.
©2021 Regal Rexnord Corporation, All Rights Reserved. MC017097E





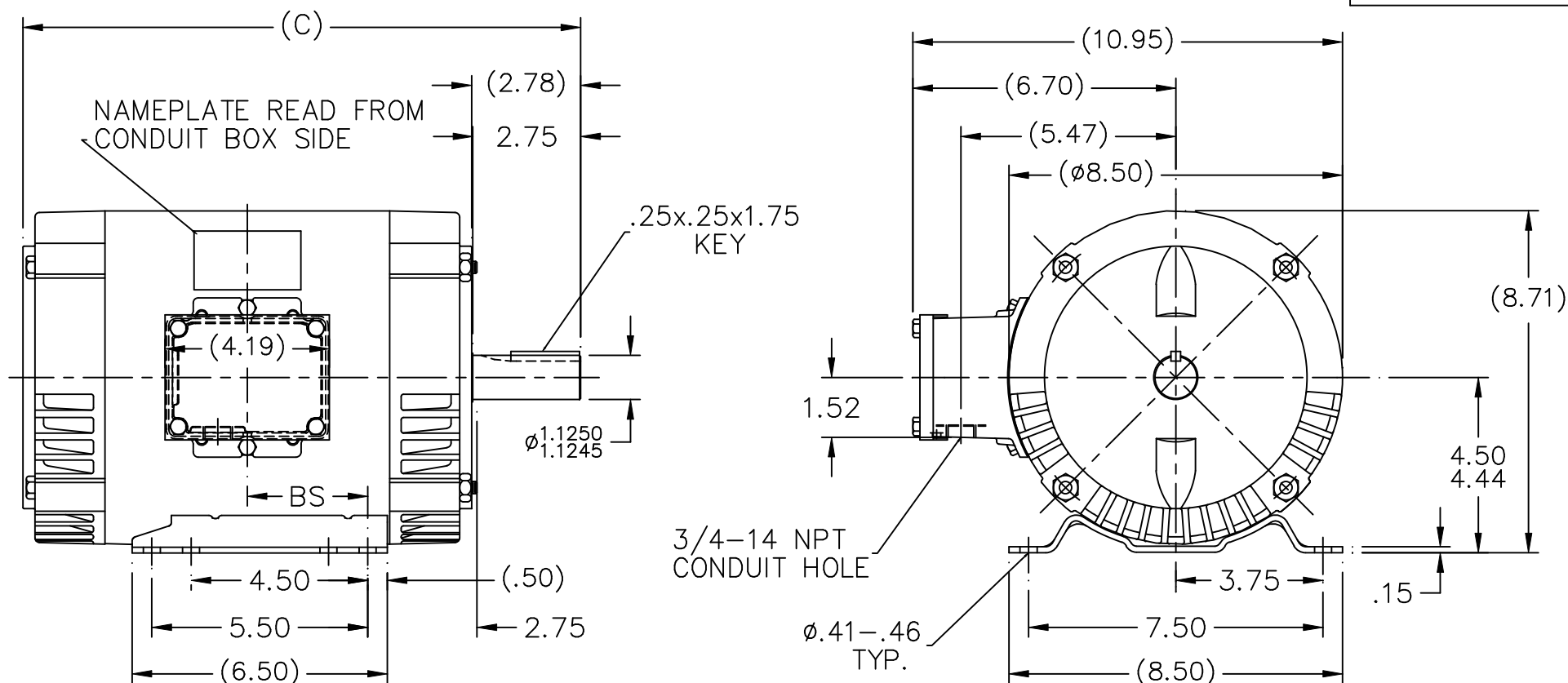
Nameplate Specifications

Output HP	3 Hp	Output KW	2.2 kW
Frequency	60 Hz	Voltage	230/460 V
Current	7.8/3.9 A	Speed	1760 rpm
Service Factor	1	Phase	3
Efficiency	89.5 %	Power Factor	80
Duty	Continuous	Insulation Class	F
Design Code	B	KVA Code	K
Frame	182T	Enclosure	Drip Proof
Thermal Protection	No	Ambient Temperature	40 °C
Drive End Bearing Size	206	Opp Drive End Bearing Size	203
UL	No	CSA	N
CE	N	IP Code	12
Number of Speeds	1		

Technical Specifications

Electrical Type	Squirrel Cage Induction Run	Starting Method	Across The Line
Poles	4	Rotation	Reversible
Resistance Main	4.15 Ohms	Mounting	Rigid Base
Motor Orientation	Horizontal	Drive End Bearing	Ball
Opp Drive End Bearing	Ball	Frame Material	Rolled Steel
Shaft Type	T	Overall Length	14.22 in
Frame Length	7.25 in	Shaft Diameter	1.125 in
Shaft Extension	2.75 in	Assembly/Box Mounting	F1/F2 CAPABLE
Connection Drawing	A-EE7308-LN	Outline Drawing	A-SS69222LN-725

This is an uncontrolled document once printed or downloaded and is subject to change without notice. Date Created:10/07/2021



NOTE:
1.BOX CAN BE ROTATED IN 180° STEPS.

DASH	FR.	C	BS	MOUNTING
725	182/4T	14.22	3.07	F1 ONLY
775	182/4T	14.72	3.32	F1 ONLY
925	182/4T	16.22	4.07	F1 ONLY

		TOLERANCES UNLESS SPECIFIED					
		DEC.	INCHES				
		.X	±.1				
3	UPDATED C'BOX GEOMETRY CN 36692	DRS 05-16-2003	ML .XX	±.03	TITLE OUTLINE 180T FR. - DR.PR. - WASHTHRU		DRAWN BLR 01-23-2002
2	REMOVED LIFT LUG MU39704	MSG 01-28-2002	TB .XXX	±.005			CHK ML 01-23-2002
1	NEW DRAWING DES. DEV.	BLR 01-23-2002	.XXXX	±.0005			APPD TB 01-23-2002
NO.	REVISION	BY & DATE	CHK	ANG	FINISH	PREV	
THIS DRAWING IN DESIGN AND DETAIL IS OUR PROPERTY AND MUST NOT BE USED EXCEPT IN CONNECTION WITH OUR WORK ALL RIGHTS OF DESIGN AND INVENTION ARE RESERVED THIS IS AN ELECTRONICALLY GENERATED DOCUMENT - DO NOT SCALE THIS PRINT			RFP	CAD FILE SS69222LN		SIZE A	DRAWING NO. PAGE OF
			DIST LB				SS69222LN 3



THREE PHASE
DUAL VOLTAGE MOTOR

HIGH VOLTAGE




LOW VOLTAGE

REF.
WINDING DIAGRAM

T8Y, T2Y, T2BL, T4BX, T2EC, T2G
T6BZ, T2B, T6BL, T4AV, T6B, T4B

OPTIONAL CORD
CONNECTION

L1 — WHITE
L2 — RED
L3 — BLACK

				TOLERANCES UNLESS SPECIFIED			DRAWN BLR 06/11/1999			
				DEC.	INCHES		CHK ML 06/18/1999			
				.X	±.1		APPD GK 06/18/1999			
3	ADDED THE OPTIONAL CORD CONNECTION MU46318	RDH 04/24/2003	DRS	.XX	±.02	TITLE CONNECTION DIAGRAM 3ø – DUAL VOLTAGE MOTOR	SCALE 1=1			
2	RE-ISSUE, ADDED '-' TO PART NUMBER	BLR 08/09/1999	GK	.XXX	±.005		REF			
1	NEW DRAWING	BLR 06/18/1999	GK	.XXXX	±.0005	MAT'L.	FMF			
NO.	REVISION	BY & DATE	CHK	ANG	±7'30"	FINISH	PREV			
THIS DRAWING IN DESIGN AND DETAIL IS OUR PROPERTY AND MUST NOT BE USED EXCEPT IN CONNECTION WITH OUR WORK ALL RIGHTS OF DESIGN AND INVENTION ARE RESERVED THIS IS AN ELECTRONICALLY GENERATED DOCUMENT – DO NOT SCALE THIS PRINT				RFP		CAD FILE EE7308LN	SIZE A	DRAWING NO. EE7308-LN	PAGE OF 3	REV.
				DIST WP						



2100 WASHINGTON ST.
GRAFTON, WI
PH. 262-277-8810

CERTIFICATION DATA SHEET

CONN. DIAGRAM: A-EE7308-LN

OUTLINE: A-SS69222LN-725

CATALOG #: LM20676

WINDING #: K1824123 EN 1

MOUNTING: F1/F2 CAPABLE

TYPICAL MOTOR PERFORMANCE DATA

HP	kW	SYNC. RPM	F.L. RPM	FRAME	ENCLOSURE	KVA CODE	DESIGN
3	2.24	1800	1760	182T	DP	K	B

PH	Hz	VOLTS	AMPS	START TYPE	DUTY	INSL	S.F.	AMB°C
3	60	230/460	7.8/3.9	ACROSS THE LINE	CONTINUOUS	F3	1.0	40

FULL LOAD EFF:	89.5	3/4 LOAD EFF:	89.5	1/2 LOAD EFF:	87.5	GTD. EFF	ELEC. TYPE
FULL LOAD PF:	80	3/4 LOAD PF:	74	1/2 LOAD PF:	62.5	87.5	SQ CAGE IND RUN

F.L. TORQUE	LOCKED ROTOR AMPS	L.R. TORQUE	B.D. TORQUE	F.L. RISE°C
8.9 LB-FT	64 / 32	21 LB-FT 236 %	33.5 LB-FT 376 %	40

SOUND PRESSURE @ 3 FT.	SOUND POWER	ROTOR WK^2	MAX. WK^2	SAFE STALL TIME	STARTS / HOUR	APPROX. MOTOR WGT
63 dBA	73 dBA	0.38 LB-FT^2	20 LB-FT^2	20 SEC.	2	80 LBS.

*** SUPPLEMENTAL INFORMATION ***

DE BRACKET TYPE	ODE BRACKET TYPE	MOUNT TYPE	ORIENTATION	SEVERE DUTY	HAZARDOUS LOCATION	DRIP COVER	SCREENS	PAINT
STANDARD	STANDARD	RIGID	HORIZONTAL	FALSE	NONE	FALSE	NONE	WHITE (ENAMEL)

BEARINGS		GREASE	SHAFT TYPE	SPECIAL DE	SPECIAL ODE	SHAFT MATERIAL	FRAME MATERIAL
DE	ODE						
BALL	BALL						
206	203	POLYREX EM	T	NONE	NONE	303 STAINLESS (C-501)	ROLLED STEEL

THERMO-PROTECTORS				THERMISTORS	CONTROL	SPACE HEATERS
THERMOSTATS	PROTECTORS	WDG RTDs	BRG RTDs			
NONE	NOT	NONE	NONE	NONE	FALSE	NONE VOLTS

*

N

O

T

E

S

*

INVERTER TORQUE: NONE
INV. HP SPEED RANGE: NONE
ENCODER: NONE
NONE NONE
NONE NONE PPR
BRAKE: NONE NONE
NONE P/N NONE
NONE NONE
NONE FT-LB NONE V NONE Hz

Data Sheet

Date: 1/24/2018

LM20676



Data @ 460 V

Motor Load Data

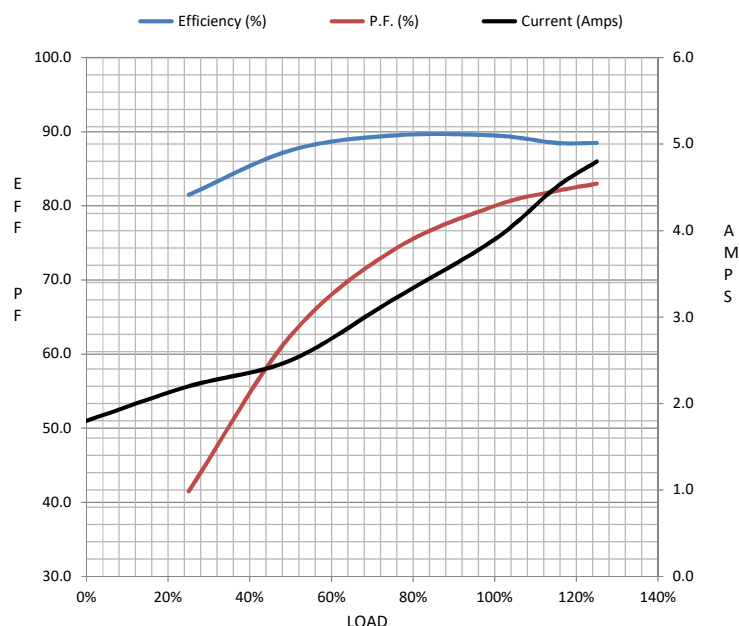
Load	0%	25%	50%	75%	100%	115%	125%	LR	
Current (Amps)	1.80	2.20	2.50	3.2	3.9	4.5	4.8	32.0	
Torque (ft-lb)	0.00	2.20	4.4	6.7	8.9	10.5	11.2	21.0	
RPM	1800	1790	1780	1772	1760	1,755	1750	0	
Efficiency (%)		81.5	87.5	89.5	89.5	88.5	88.5		
P.F. (%)	7.0	41.5	62.5	74.0	80.0	82.0	83.0	48.0	

Motor Speed Data

	LR	Pull-Up	BD	Rated	Idle
Speed (RPM)	0	900	1400	1760	1800
Current (Amps)	32.0	29.0	22.5	3.9	1.80
Torque (ft-lb)	21.0	19.5	33.5	8.9	0.00

Information Block

HP	3.0			
Sync. RPM	1800			
Frame	182			
Enclosure	DP			
Construction	TDR			
Voltage	230/460 V			
Frequency	60 Hz			
Design	B			
LR Code letter	K			
Service Factor	1.15			
Temp Rise @ FL	40 °C			
Duty	CONT			
Ambient	40 °C			
Elevation	1,000 feet			
Rotor/Shaft wk²	0.38 Lb-Ft²			
Ref Wdg	K1824123 EN			
Sound Pressure @ 1M	63 dBA			
VFD Rating	NONE			
Outline Dwg	A-SS69222LN-725			
Conn. Diag	A-EE7308-LN			
Additional Specifications:				
0				
0				
EQUIV CKT (OHMS / PHASE)				
R1	R2	X1	X2	Xm
2.3650	1.5610	5.3450	8.0320	132.1560



Speed - Torque Curve

