

PRODUCT INFORMATION PACKET



Model No: LM18376
Catalog No: LM18376
75 HP Special Voltage Motor, 3 phase, 3600 RPM, 575 V, 365TS Frame, TEFC
Special Voltage Motors

Regal and Leeson are trademarks of Regal Rexnord Corporation or one of its affiliated companies.
©2021 Regal Rexnord Corporation, All Rights Reserved. MC017097E





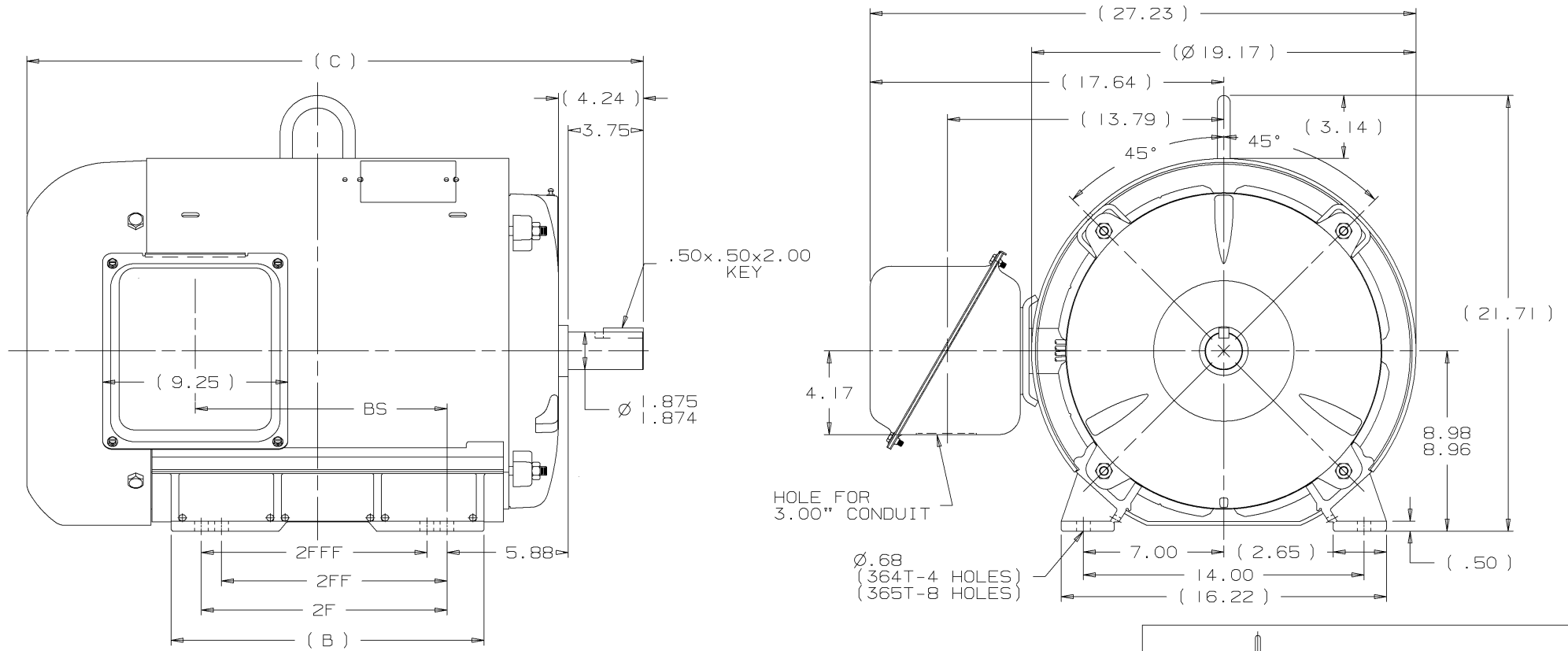
Nameplate Specifications

Output HP	75 Hp	Output KW	56.0 kW
Frequency	60 Hz	Voltage	575 V
Current	65.5 A	Speed	3570 rpm
Service Factor	1.25	Phase	3
Efficiency	95 %	Power Factor	90
Duty	Continuous	Insulation Class	F
Design Code	B	KVA Code	G
Frame	365TS	Enclosure	Totally Enclosed Fan Cooled
Thermal Protection	No	Ambient Temperature	40 °C
Drive End Bearing Size	6313	Opp Drive End Bearing Size	6311
UL	Recognized	CSA	Y
CE	Y	IP Code	43
Number of Speeds	1		

Technical Specifications

Electrical Type	Squirrel Cage Induction Run	Starting Method	Wye Start Delta Run
Poles	2	Rotation	Reversible
Resistance Main	.062 Ohms	Mounting	Rigid Base
Motor Orientation	Horizontal	Drive End Bearing	Ball
Opp Drive End Bearing	Ball	Frame Material	Rolled Steel
Shaft Type	TS	Overall Length	30.77 in
Frame Length	18.32 in	Shaft Diameter	1.875 in
Shaft Extension	3.75 in	Assembly/Box Mounting	F1 ONLY
Connection Drawing	A-EE7340	Outline Drawing	XH2F1SS2-1770

This is an uncontrolled document once printed or downloaded and is subject to change without notice. Date Created:10/27/2021



- NOTES:
1. CONDUIT BOX CAN BE ROTATED IN 90° STEPS.
 2. NAMEPLATES TO BE READ FROM CONDUIT BOX SIDE OF MOTOR.

DASH	FRAME	C	B	2F	2FF	2FFF	BS	REV	DATE	CHANGE	NAME	PART NAME	OUTLINE	NEMA MOTORS	DRWG NO
1670	364TS	29.77	14.61	11.25			11.55	I	10-31-2002	NEW DRAWING	MU44106	360TS TEFC UE1			XH2F1SS2
1770	365TS	30.77	15.61	12.25	11.25	11.25	12.55								

UNLESS OTHERWISE SPECIFIED DIMENSIONS ARE IN INCHES
TOL. ON XX±.02 XXX±.005 XXXX±.0005 ANGLES± 7'30"

MAX. SURFACE ROUGHNESS
UNLESS OTHERWISE NOTED

FINISH

MATERIAL

DRAWN BY CTO 10-31-2002

CHKD BY ML 10-31-2002

APPD BY HNH 10-31-2002

PART NAME OUTLINE NEMA MOTORS

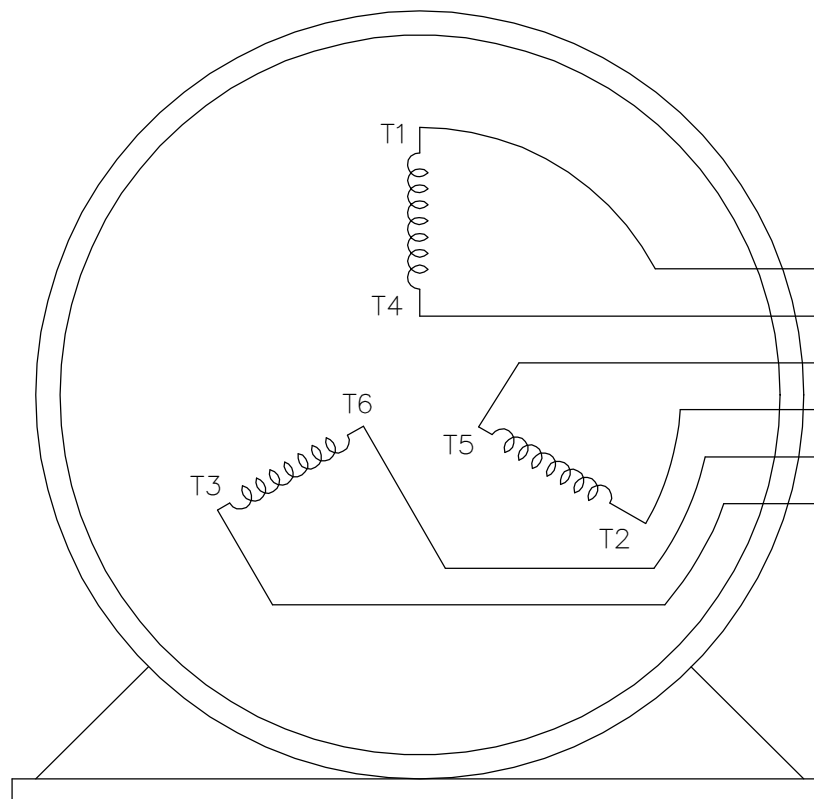
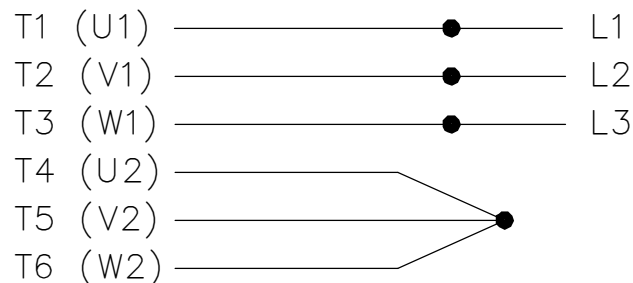
360TS TEFC UE1

DRWG NO XH2F1SS2

DISTRIBUTION ~~XX~~ - ~~XX~~ - ~~XX~~ - BY CADD FILE NO. XH2F1SS2

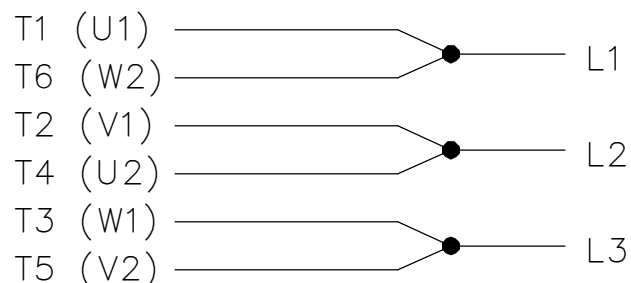
THREE PHASE
WYE START DELTA RUN

START





T1 (U1)
T4 (U2)
T5 (V2)
T2 (V1)
T6 (W2)
T3 (W1)

RUN



VIEW OF TERMINAL END

NOTE:
IEC LEAD MARKINGS ARE NOTED
IN PARANTHESES

DRAWING REVISION F	REVISION BY RTT	REV DATE/© DATE 05-29-2019	TOLERANCES (EXCEPT AS NOTED): DEC. INCH mm ANGLE .X ±0.1 [±3] ±7° 30" .XX ±0.02 [±0.5] .XXX ±0.005 [±0.13] .XXXX ±0.0005 [±0.013] REMOVE BURRS & BREAK SHARP EDGES: .003/.015 [.08/.38] X 45 ° CORNER FILLETS: R.02 [.5] MACHINED SURFACES: 200/ 5.1 INCH mm mm DIMENSIONS IN [BRACKETS] ARE FOR REFERENCE ONLY	DRAWN BY LZ	<div> Regal Beloit America, Inc.</div>		
ECO ECO-0167538	APPROVED BY JWA	DATE 05-29-2019		DATE 01-06-1994	DESCRIPTION <div>CONNECTION DIAGRAM</div> <div>3<MOD-DIAM> - WYE START DELTA RUN</div>		
ECO DESCRIPTION UPDATED TITLE BLOCK				APPROVED BY GK			
COPYRIGHT (PER REVISION DATE) REGAL BELOIT AMERICA, INC. ALL RIGHTS RESERVED. PROPRIETARY AND CONFIDENTIAL INFORMATION - THIS DOCUMENT IS THE PROPERTY OF REGAL BELOIT AMERICA, INC. ("OWNER") AND CONTAINS OWNER'S PROPRIETARY INFORMATION. ANY PERSON, CORPORATION OR OTHER FIRM RECEIVING IT IS DEEMED, BY RECEIVING IT, TO AGREE THAT IT, AND/OR ANY PART OF IT, SHALL NOT BE DISCLOSED TO ANY PERSON, CORPORATION OR OTHER ENTITY, DUPLICATED, AND/OR USED, EXCEPT AS EXPRESSLY APPROVED IN WRITING IN ADVANCE BY OWNER. THIS DOCUMENT SHALL BE RETURNED TO OWNER UPON REQUEST. IT MAY BE SUBJECT TO CERTAIN RESTRICTIONS UNDER APPLICABLE EXPORT CONTROL LAWS AND REGULATIONS.				DATE 01-18-1994	MATERIAL PROCESS/FINISH		
				REFERENCE			
			THIRD ANGLE PROJECTION	<div></div>	SIZE A	DRAWING NUMBER EE7340	SHEET 1 OF 1