

PRODUCT INFORMATION PACKET



Model No: LM18290
Catalog No: LM18290
100 HP Special Voltage Motor, 3 phase, 3600 RPM, 575 V, 405TS Frame, TEFC
Special Voltage Motors

Regal and Leeson are trademarks of Regal Rexnord Corporation or one of its affiliated companies.
©2021 Regal Rexnord Corporation, All Rights Reserved. MC017097E





Nameplate Specifications

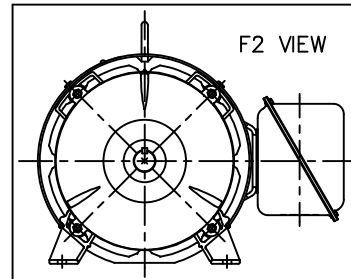
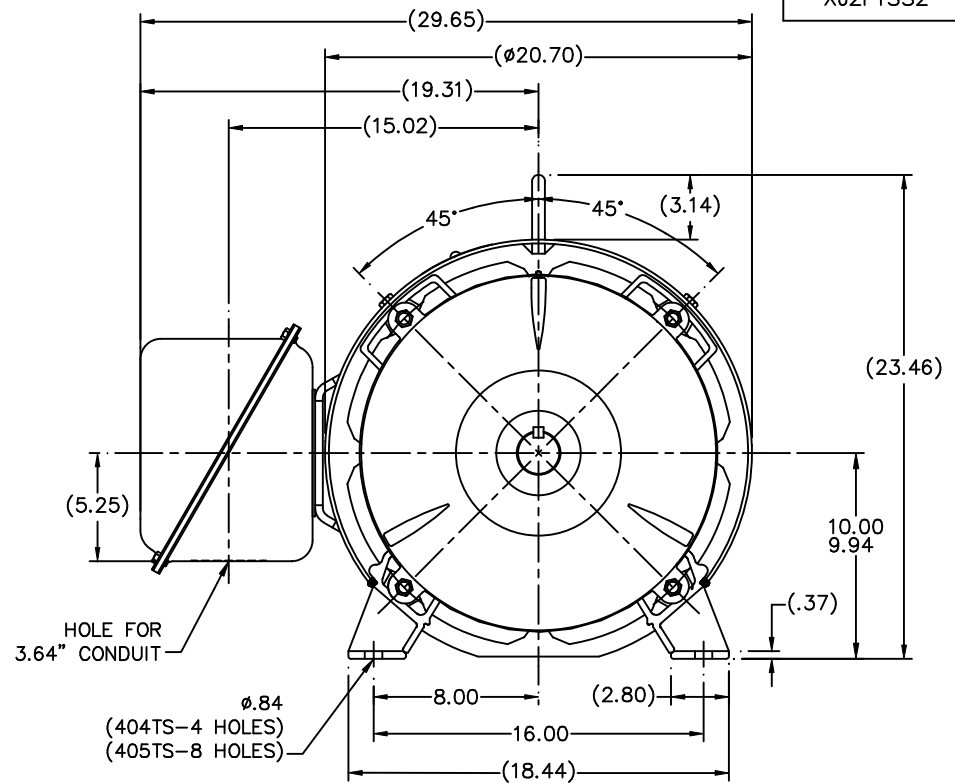
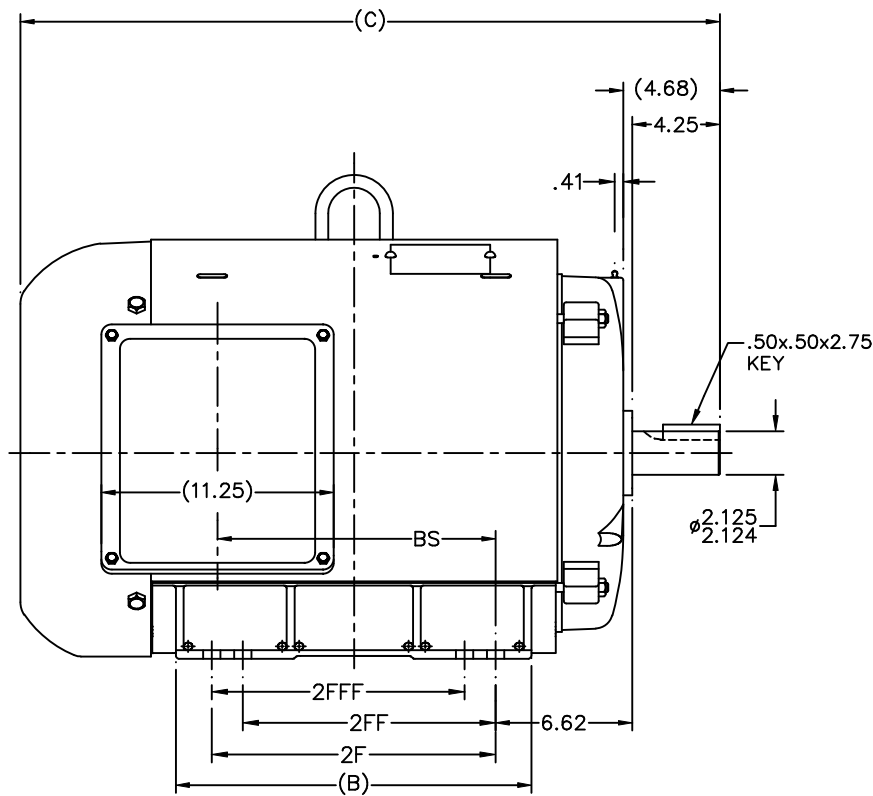
Output HP	100 Hp	Output KW	75.0 kW
Frequency	60 Hz	Voltage	575 V
Current	85.0 A	Speed	3565 rpm
Service Factor	1.15	Phase	3
Efficiency	94.1 %	Power Factor	93
Duty	Continuous	Insulation Class	F
Design Code	B	KVA Code	F
Frame	405TS	Enclosure	Totally Enclosed Fan Cooled
Thermal Protection	No	Ambient Temperature	40 °C
Drive End Bearing Size	315	Opp Drive End Bearing Size	313
UL	Recognized	CSA	Y
CE	Y	IP Code	43
Number of Speeds	1		

Technical Specifications

Electrical Type	Squirrel Cage Induction Run	Starting Method	Wye Start Delta Run
Poles	2	Rotation	Reversible
Resistance Main	.059 Ohms	Mounting	Rigid Base
Motor Orientation	Horizontal	Drive End Bearing	Ball
Opp Drive End Bearing	Ball	Frame Material	Rolled Steel
Shaft Type	TS	Overall Length	35.40 in
Frame Length	20.19 in	Shaft Diameter	2.125 in
Shaft Extension	4.25 in	Assembly/Box Mounting	F1/F2 CAPABLE
Outline Drawing	XJ2F1SS2-1946	Connection Drawing	3A217-7

This is an uncontrolled document once printed or downloaded and is subject to change without notice. Date Created:10/27/2021

XJ2F1SS2



- NOTES:
 1. CONDUIT BOX CAN BE ROTATED IN 90° STEPS.
 2. NAMEPLATES TO BE READ FROM CONDUIT BOX SIDE OF MOTOR

1796	404TS	33.90	---	15.75	12.25	---	---	12.17
1946	405TS	35.40	---	17.25	13.75	12.25	12.25	13.67
DASH	FRAME	C	AG	B	2F	2FF	2FFF	BS

		TOLERANCES UNLESS SPECIFIED		DRAWN TJB 05-23-2002	
		DEC.	INCHES	CHK ML 05-28-2002	
		.X	±.1	APPD HNH 05-28-2002	
		.XX	±.03	SCALE 1=6	
		.XXX	±.005	REF	
1	NEW DRAWING MU41848	TJB	05-28-2002	HNH	XXXX ±.0005
NO.	REVISION	BY & DATE	CHK	ANG	±7'30"
THIS DRAWING IN DESIGN AND DETAIL IS OUR PROPERTY AND MUST NOT BE USED EXCEPT IN CONNECTION WITH OUR WORK ALL RIGHTS OF DESIGN AND INVENTION ARE RESERVED THIS IS AN ELECTRONICALLY GENERATED DOCUMENT - DO NOT SCALE THIS PRINT				RFP	CAD FILE XJ2F1SS2
			DIST BY	SIZE B	DRAWING NO. XJ2F1SS2
				PAGE OF	REV. 1



```
ERROR: syntaxerror  
OFFENDING COMMAND: --nostringval--
```

```
STACK:
```

```
/terminate  
-dictionary-  
/Pscript_WinNT_Compat  
-dictionary-
```



1051 CHEYENNE AVE.
GRAFTON, WI 53024
PH. 262-277-8810

DATA VOLTS: 460

CERTIFICATION DATA SHEET

CONN. DIAGRAM: 3A217-7
OUTLINE: XJ2F1SS2-1946
WINDING: L4052003

CAT #: LM18290

NONE 1

TYPICAL MOTOR PERFORMANCE DATA

HP	KW	SYNC RPM	FL RPM	FRAME	ENCLOSURE	TYPE	KVA CODE	DESIGN
100	75	3600	3565	405TS	TEFC	TFR	F	B

PH	HZ	VOLTS	AMPS	START TYPE	DUTY	INSL	S.F.	AMB	ELEV.
3	60	575	85	VVE START DELTA RUN	CONT	F	1.15	40	3300

F.L. EFF	94.1	3/4 LD EFF	94.5	1/2 LD EFF	94.1	GTD EFF	ELECT. TYPE
F.L. PF	93.0	3/4 LD PF	92.5	1/2 LD PF	91.0	93.0	SQ CAGE IND RUN

F.L. TORQUE	LR AMPS @ 460 V	L.R. TORQUE	B.D. TORQUE	F.L. RISE (° C)
147 LB-FT	548	200 LB-FT 136%	350 LB-FT 238%	80

PRESSURE @ 3	SOUND	POWER	ROTOR WK²	MAX. LOAD WK²	SAFE STALL TIME	STARTS/HOUR	MOTOR WGT
999 dBA	1008 dBA		0.00 LB-FT²	0 LB-FT²	0 SEC.	0	0 LB.

***** SUPPLEMENTAL INFORMATION *****

DE BRACKET TYPE	ODE BRACKET TYPE	MOUNT TYPE	MOTOR ORIENTATION	SEVERE DUTY	HAZARDOUS LOCATION	DRIP COVER	SCREENS	PAINT
STANDARD	STANDARD	RIGID	HORIZONTAL	NO	NONE	NO	NONE	WATTSAVER

BEARINGS		GREASE	SHAFT TYPE	SPECIAL DE	SPECIAL ODE	SHAFT MATERIAL	FRAME MATERIAL
DE	ODE	POLYREX EM	TS	NONE	NONE	1045 HOT ROLLED (C-204)	ROLLED STEEL
BALL	BALL						
315	313						

THERMOSTATS	PROTECTORS	WDG RTD's	BRG RTD's	THERMISTORS	CONTROL	SPACE HEATERS
NONE	NOT	NONE	NONE	NONE	FALSE	NA

R1 (ohms/ph)	R2 (ohms/ph)	X1 (ohms/ph)	X2 (ohms/ph)	Xm (ohms/ph)	VIBRATION (in/sec)	FLOAT
0.067	0.036	0.462	0.328	25.471	0.150	ODE

* N O T E S *	INVERTER TORQUE: NONE INV. HP SPEED RANGE: NONE					
	ENCODER: NONE NONE NONE PPR					
	BRAKE: NONE NONE NONE					
	FT-LB: NA VOLTAGE: NONE HZ:					
	UL: V-INS, CONST UL REC					

DATE: 9/4/2018

Data Sheet

Date: 9/4/2018

LM18290



Data @ **575 V**

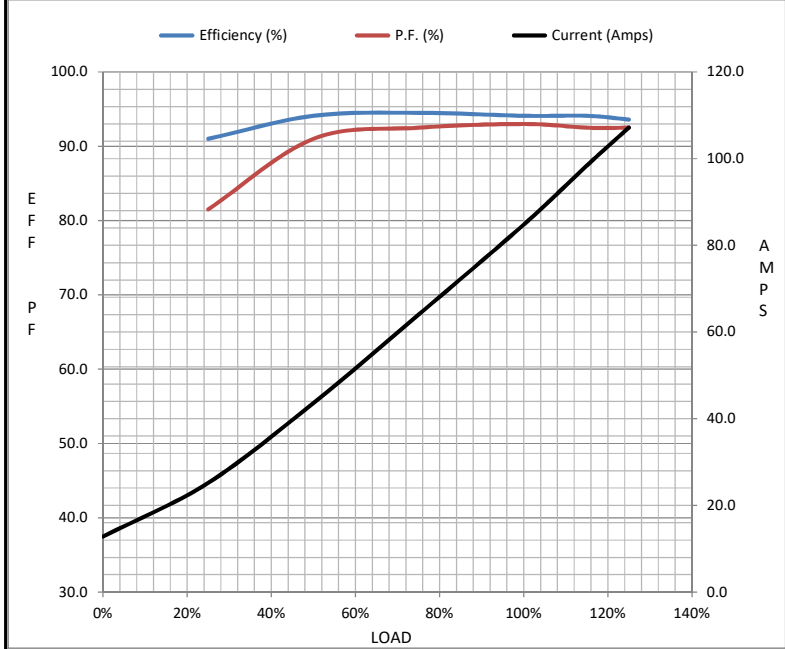
Motor Load Data

Load	0%	25%	50%	75%	100%	115%	125%	LR
Current (Amps)	12.8	25.2	43.6	64.0	84.8	98.4	107	548
Torque (ft-lb)	0.00	36.5	73.5	110	147	170	185	200
RPM	3600	3590	3585	3575	3565	3,560	3555	0
Efficiency (%)		91.0	94.1	94.5	94.1	94.1	93.6	
P.F. (%)	11.5	81.5	91.0	92.5	93.0	92.5	92.5	26.0

Motor Speed Data

	LR	Pull-Up	BD	Rated	Idle
Speed (RPM)	0	1800	3330	3565	3600
Current (Amps)	548	492	356	84.8	12.8
Torque (ft-lb)	200	180	350	147	0.00

Information Block				
HP	100.0			
Sync. RPM	3600			
Frame	405			
Enclosure	TEFC			
Construction	TFR			
Voltage	575 V			
Frequency	60 Hz			
Design	A			
LR Code letter	F			
Service Factor	1.15			
Temp Rise @ FL	80 ° C			
Duty	CONT			
Ambient	40 ° C			
Elevation	1,000 feet			
Rotor/Shaft wk ²	0.00 Lb-Ft ²			
Ref Wdg	L4052003 NONE			
Sound Pressure @ 1M	999 dBA			
VFD Rating	NONE			
Outline Dwg	XJ2F1SS2-1946			
Conn. Diag	3A217-7			
Additional Specifications:				
0				
0				
EQUIV CKT (OHMS / PHASE)				
R1	R2	X1	X2	Xm
0.0670	0.0360	0.4620	0.3280	25.4710



Speed -Torque Curve

